

09303

Twinings 'Refresh Double Mint' Mesh Tea Pyramids Non Enveloped 1x2x40x2g

Refresh Double Mint 2x

PRODUCT DESCRIPTION

Need to refresh in an instant? Grab a cup of our extra minty Refresh, The ultimate mint experience. Smooth peppermint rounded off with bursts of sweet spearmint. Naturally Caffeine free.

Brand	R. Twinings & Co Ltd
Manufacturer Product Code	F16461
Product Type	Drink
Product Category	Tea & Coffee
Storage Type	Ambient
Erudus ID	c63a5a8027bb4632a697a9c516ce8c9f
Specification Type	Legacy
Inner Component GTIN	0070177102807
Outer Case GTIN	00070177523121



INGREDIENTS

Ingredient Declaration

Peppermint, Spearmint (30%)

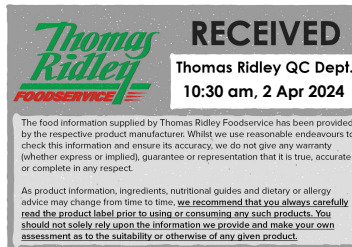
ALLERGENS

Product Contains:

Celery/Celeriac	No	Mustard	No
Cereals Containing Gluten	No	Nuts (Tree)	No
Barley	No	Almond nuts	No
Oats	No	Brazil nuts	No
Rye	No	Cashew nuts	No
Wheat (including Spelt and Khorasan)	No	Hazelnuts	No
Gluten content <20ppm	Yes	Macadamia (Queensland) nuts	No
Crustacea	No	Pecan nuts	No
Eggs	No	Pistachio nuts	No
Fish	No	Walnuts	No
Lupin	No	Peanuts	No
Milk	No	Sesame Seeds	No
Molluscs	No	Soybeans	No
		Sulphur Dioxide and Sulphites	No

Additional Allergen Information

Twinings exclude ingredients that would require precautionary labelling of the current known major allergens as detailed in Regulation (EU) No 1169/2011 of 25th October 2011 and any subsequent amendments, which could cause adverse health conditions in sensitive individuals. Additionally all raw ingredients used do not include any colours or flavour enhancers.



SUPPLEMENTARY
INGREDIENT
INFORMATION

Palm Oil	No
Hydrogenated Vegetable Oil/Fat	No
GM Protein/DNA	No

Alcoholic Strength %Vol (ABV)	0 % Vol
--------------------------------------	---------

ADDITIVES

Product Contains:

Artificial Antioxidants	No
Artificial Colours	No
Artificial Flavour Enhancers	No

Artificial Flavourings	No
Artificial Preservatives	No
Artificial Sweeteners	No

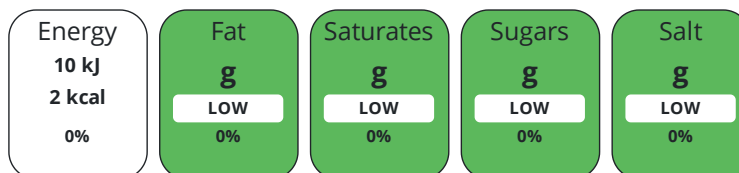
DIET
SUITABILITY

Suitable for Coeliacs	Yes
Kosher Diet	No
Vegan Diet	Suitable for

Halal Diet	No
Vegetarian Diet	Suitable for

NUTRITIONAL
INFORMATION

Each 100g/ml portion contains:



of your reference intake.

Typical values per 100g/ml : Energy 2kcal / 10kj

Nutrient	per 100g/ml	RI per 100g/ml	per 2g/ml serving	RI per 2g/ml serving
Energy (kJ)	10 kJ	0%	0.2 kJ	0%
Energy (kcal)	2 kcal	0%	-	-
Fat	0 g	0%	-	-
of which Saturates	0 g	0%	-	-
of which Mono-unsaturates	0 g	-	-	-
of which Polyunsaturates	0 g	-	-	-
Carbohydrate	0 g	0%	-	-
of which Sugars	0 g	0%	-	-
of which Polyols	0 g	-	-	-
of which Starch	0 g	-	-	-
Fibre	0 g	-	-	-
Protein	0 g	0%	-	-
Salt	0 g	0%	-	-
Sodium	0 mg	-	-	-
Serving Size	2 g			

VITAMINS AND
MINERALS

Nutrient	per 100g/ml	RI per 100g/ml	per 2g/ml serving	RI per 2g/ml serving
Vitamin A	0 µg	0%	-	-
Vitamin C	0 mg	0%	-	-
Folate/Folic Acid	0 µg	0%	-	-
Calcium	0 mg	0%	-	-
Iron	0 mg	0%	-	-
Zinc	0 mg	0%	-	-

SUPPLEMENTARY
NUTRITIONAL
INFORMATION

Cholesterol per 100 g/ml (UK/FR)	0 g
Trans Fats per 100 g/ml	0 g
Fat Percentage in Dry Matter per 100 g/ml	0 %
Non Milk Extrinsic Sugars per 100 g/ml	0 g

HFSS (HIGH IN
FAT, SALT AND
SUGAR)
HANDLING &
STORAGE
INFORMATION

HFSS Status	No
--------------------	----

Directions For Use

Use 1 tea bag per cup. Fill the pot with freshly boiled water (200ml of water per tea bag). Leave it to brew for 2-4 minutes. Serve hot or pour in a jug over ice for a cooling alternative.

Storage Instructions

These extra special teas need extra special care so please keep them in a cool, dry place. Reseal the bag after you've used it or empty into an airtight container. Best Before: See back of pack

Shelf Life from Time of Production	730 Days
---	----------

ACCREDITATIONS/
CERTIFICATIONS/
ASSURANCE
SCHEMES
ORIGIN

BRCGS Certified

FSSC 22000

Product Country of Origin/Place of Poland

Provenance

PRODUCT
CHARACTERISTICS

Standards Testing

Do you undertake trend analysis of microbiological results? No

Is shelf life testing undertaken? No

CONFIGURATION

Case Configuration

Inner Pack Configuration

Total Quantity of Inner Components in Outer Case 2 Units

Is the Outer Case Splittable? Yes

PRODUCT
WEIGHTS

Inner Component

Variable Weight Consumer Item No

Net Drained Weight 0.08 kg

Weight/Volume

80g

Outer Case

Outer Case Gross Weight 0.31 kg

Outer Case Net Weight 0.16 kg

PRODUCT
DIMENSIONS

Inner Component

Inner Component Depth 248 mm

Inner Component Width 120 mm

Inner Component Height 190 mm

Outer Case

Outer Case Depth 245 mm

Outer Case Width 191 mm

Outer Case Height 120 mm

PALLET
INFORMATION

Quantity of Cases Per Pallet Layer 25 Cases

Pallet Height 1.2 MTR

Quantity of Layers Per Pallet 8 Layers

Pallet Gross Weight 92 kg

Quantity of Cases Per Pallet 200 Cases

PACKAGING

Inner Component Packaging

Type	Materials	Weight	Recycled Plastic %	Recyclable	Returnable	Composite
Re-Sealable Packaging	Plastic	100 g	- %			

Outer Case Packaging

Type	Materials	Weight	Recycled Plastic %	Recyclable	Returnable	Composite
Case	Paper/Cardboard	40 g	- %			

Transport Packaging

Type	Materials	Weight	Recycled Plastic %	Recyclable	Returnable	Composite
Other	Plastic	350 g	- %			

OTHER INFORMATION

Commodity Code	1211908690
-----------------------	------------

CONTACT INFORMATION

Address	Technical Contact
R. Twinings & Co Ltd	Neil Parry
Andover	Customer Supply Team
SP10 5AQ	Neil.parry@twinings.com
England	
<u>P. (Phone)</u> 01264 348181	<u>P. (Phone)</u> 01264 348181

The information on the [Erudus System](#) has been supplied by the manufacturers of the products and, whilst the owners of the Erudus System take steps to ensure the information is regularly updated, they give no warranty and no guarantee that the information is accurate. Product information and ingredients may change, please always read product labels carefully in addition to using the information provided by Erudus.

We do not accept liability for any inaccuracies or incorrect information contained on this site. Please visit <http://www.erudus.com/terms-and-conditions> for full terms and conditions.