

NielsenIQ Brandbank

Philadelphia Original 165g



EAN
7622201693916

Target market(s)
GB, IE



RECEIVED

Thomas Ridley QC Dept.

2:46 pm, 2 Oct 2023

The food information supplied by Thomas Ridley Foodservice has been provided by the respective product manufacturer. Whilst we use reasonable endeavours to check this information and ensure its accuracy, we do not give any warranty (whether express or implied), guarantee or representation that it is true, accurate or complete in any respect.

As product information, ingredients, nutritional guides and dietary or allergy advice may change from time to time, **we recommend that you always carefully read the product label prior to using or consuming any such products. You should not solely rely upon the information we provide and make your own assessment as to the suitability or otherwise of any given product.**

Components

Ingredients

Full Fat Soft **CHEESE**

Salt

Stabiliser (Guar Gum)

Acid (Citric Acid)

Nutrition

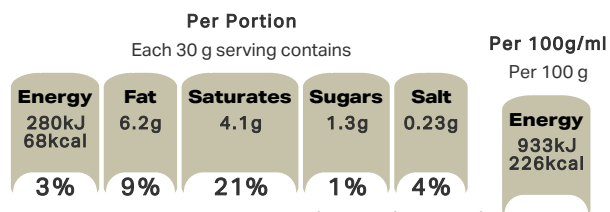
	Per 100 g	Per 30 g
Energy	933 kJ	280 kJ
	226 kcal	68 kcal
Fat	21 g	6.2 g
of which Saturates	14 g	4.1 g
Carbohydrate	4.3 g	1.3 g
of which Sugars	4.3 g	1.3 g
Fibre	0.2 g	<0.1 g
Protein	5.4 g	1.6 g
Salt	0.75 g	0.23 g

1 portion = 30 g. Contains 5-6 portions

Calculated Nutrition

	per 100g	Per 30 g
Energy (kJ)	933	280
Energy (kcal)	226	68
Fat (g)	21	6.2
of which saturates (g)	14	4.1
Carbohydrate (g)	4.3	1.3
of which sugars (g)	4.3	1.3
Fibre (g)	0.2	<0.1
Protein (g)	5.4	1.6
Salt (g)	0.75	0.23

Front of Pack Nutrition



% reference intake of an average adult (8400 kJ / 2000 kcal)

Nutrition Other Text

1 portion = 30 g. Contains 5-6 portions

Product Description

Alternative Description

Supplier Preferred Product Name - Philadelphia Original Soft Cheese 165g

Brand

Philadelphia

Features

Fresh and creamy taste
Made with Simply Good Ingredients Milk, Cream, Pinch of Salt
Made with pasteurised milk
No Preservatives
Suitable for Vegetarians

Standardised Brand

Brand - Philadelphia

Regulated Product Name

Full fat soft cheese.

Marketing

Company Name

Mondelez UK / Mondelez Ireland

Company Address

GB: Freepost MDLZ,
Mondelez UK,
Uxbridge,
UB8 1DH.

IE: Mondelez Ireland,
Malahide Road,
Coolock,
Dublin 5.

Further Description

For delicious recipe ideas or any other comments, visit: www.philadelphia.co.uk

Health & Lifestyle

Lifestyle

- Suitable for Vegetarians

Allergy Advice

Milk - Contains

Additives

Preservatives - Free From

Storage & Usage

Storage and Usage Statements

- Keep Refrigerated

Storage Type

Type

Chilled

Storage

Best before: see above. Keep refrigerated. To enjoy this product at its best consume within 1 week of opening.

Durability after Opening

Consume Within - Weeks

1

Date Marking Type

- Best Before

Brandbank Captured Pack Data

Pack Size

165g e

Numeric Size

Numeric Size - 165

Recycling Info

Foil - Recyclable
Lid - Recyclable
Tub - Recyclable

Recycling Preparation Instructions

Tub - Rinse

Dimension

Shelf Height (mm)	Shelf Width (mm)	Shelf Depth (mm)
93	125	36

(GS1 package measurement rules)

Pack Type

Type - Tub

Weight

Gross Weight - 179

New Product Development

Final Product - Not NPD

Unit Merchandising

Height - 93
Width - 125
Depth - 36
Nesting Depth - 35
Unit Stackable - Yes
Unit Stable - Yes
Merchandise Multiple Ways - Yes

Shelf Ready Pack

GTIN - 07622201693909
Height - 99
Width - 132
Depth - 179
Weight - 935
Unit Count - 5
Unit Height - 1
Unit Width - 1
Unit Depth - 5
Merchandise Multiple Ways - No
Prototype - No
Is Case - No

Case

GTIN - 07622201693909
Height - 180
Width - 132
Depth - 194
Weight - 1885
Unit Count - 10
Prototype - No

Recycling Other Text

Recycle Your Pack
www.recyclenow.com

Usage Count

Number of uses - Servings

5-6

Usage Other Text

1 portion = 30 g. Contains 5-6 portions

Customer Services

Manufacturers Address

GB: Freepost MDLZ,
Mondelez UK,
Uxbridge,
UB8 1DH.

IE: Mondelez Ireland,
Malahide Road,
Coolock,
Dublin 5.

Return To

Write to us at:

GB: Freepost MDLZ,
Mondelez UK,
Consumer Response,
Uxbridge,
UB8 1DH.
UK Careline: 0808 1000 678

IE: Mondelez Ireland,
Malahide Road,
Coolock,
Dublin 5.
www.philadelphia.ie
ROI Careline: 1800 600 858

Telephone Helpline

UK: 0808 1000 678
ROI: 1800 600 858

Web Address

www.philadelphia.ie

Extended Data

Description Breakdown

Variant - Original





