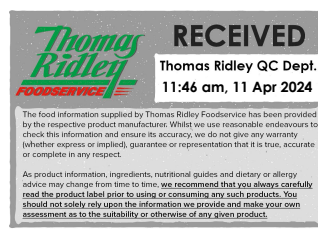


Changed Apr 10, 2024 11:35

Reviewed Apr 10, 2024 11:35

Erudus ID e014f6ac5a9c476c8af7828fa6c14b85

Version 2.0



09386

CH227 Cooked British Beef (80%) Slice (42g) (6x500g) 1x3kg

British Beef Silverside 80% 6x12x42g

PRODUCT DESCRIPTION

Cooked beef silverside with added water and pea protein

Brand	The UK Foodhall Ltd
Manufacturer Product Code	CH227
Product Type	Food
Product Category	Pork, Beef & Lamb
Storage Type	Frozen
Erudus ID	e014f6ac5a9c476c8af7828fa6c14b85
Specification Type	Meat

Outer Case GTIN 5060329042568

INGREDIENTS

Ingredient Declaration

Beef silverside(80%), water, pea protein, salt stabilisers(E450, E451).

ALLERGENS

Product Contains:

Celery/Celeriac	No	Mustard	No
Cereals Containing Gluten	No	Nuts (Tree)	No
Barley	No	Almond nuts	No
Oats	No	Brazil nuts	No
Rye	No	Cashew nuts	No
Wheat (including Spelt and Khorasan)	No	Hazelnuts	No
Crustacea	No	Macadamia (Queensland) nuts	No
Eggs	No	Pecan nuts	No
Fish	No	Pistachio nuts	No
Lupin	No	Walnuts	No
Milk	No	Peanuts	No
Molluscs	No	Sesame Seeds	No
		Soybeans	No
		Sulphur Dioxide and Sulphites	No

SUPPLEMENTARY INGREDIENT INFORMATION

Palm Oil	No
Hydrogenated Vegetable Oil/Fat	No
GM Protein/DNA	No

ADDITIVES

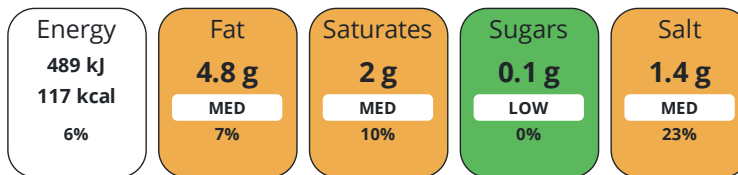
Product Contains:

Artificial Antioxidants	No	Artificial Flavourings	No
Artificial Colours	No	Artificial Preservatives	No
Artificial Flavour Enhancers	No	Artificial Sweeteners	No

DIET SUITABILITY

Halal Diet	No	Kosher Diet	No
-------------------	----	--------------------	----

Each 100g/ml portion contains:



of your reference intake.

Typical values per 100g/ml : Energy 117kcal / 489kJ

Nutrient	per 100g	RI per 100g	per 42g serving	RI per 42g serving
Energy (kJ)	489 kJ	6%	205.4 kJ	2%
Energy (kcal)	117 kcal	6%	49.1 kcal	2%
Fat	4.8 g	7%	2 g	3%
of which Saturates	2 g	10%	0.8 g	4%
Carbohydrate	0.1 g	0%	-	
of which Sugars	0.1 g	0%	-	
Fibre	< 0.5 g		0.2 g	
Protein	18 g	36%	7.6 g	15%
Salt	1.4 g	23%	0.6 g	10%
Sodium	560 mg		235.2 mg	

Serving Size 42 g

SUPPLEMENTARY
NUTRITIONAL
INFORMATION

HANDLING &
STORAGE
INFORMATION

Directions For Use

Keep frozen below -18 degrees Celsius. To use, defrost in a refrigerator for 24 hours. This product needs defrosting minimum 24 hours prior to handling. We would recommend taking out of the freezer before the end of the working day 1 and defrost in a refrigerator for use on day 3. Once defrosted can be eaten safety cold or to serve hot: steam for approximately 40 minutes, ensuring the product is piping hot and has a core temperature of 75C.

Storage Instructions

Keep Frozen, below -18 degrees Celsius Use within 2 days of defrosting.

Shelf Life from Time of Production 365 Days **Exempt From Shelf Life Labelling** No

BRCGS Certified **Red Tractor**

ACCREDITATIONS/
CERTIFICATIONS/
ASSURANCE
SCHEMES
ORIGIN

Product Country of Origin/Place of United Kingdom

Provenance

Additional Origin Details

British Beef

PRODUCT
CHARACTERISTICS

Standards Testing

Do you undertake trend analysis of microbiological results? No **Is shelf life testing undertaken?** No

CONFIGURATION	Case Configuration				Inner Pack Configuration		
	Total Quantity of Inner Components in Outer Case	6 Units	Is Inner Pack Splittable?	No			
	Total Quantity of Inner Packs in Outer Case	6 Units	Quantity of Inner Components in Inner Pack	12			
	Is the Outer Case Splittable?	No					
PRODUCT WEIGHTS	Inner Component						
	Variable Weight Consumer Item	No					
	Inner Component Weight	42 g					
	Outer Case						
PRODUCT DIMENSIONS	Outer Case						
	Outer Case Gross Weight	3.23 kg					
	Outer Case Net Weight	3 kg					
	Inner Component						
	Inner Component Depth	160 mm					
	Inner Component Width	90 mm					
PALLET INFORMATION	Outer Case						
	Outer Case Depth	295 mm					
	Outer Case Width	240 mm					
	Outer Case Height	110 mm					
	Quantity of Cases Per Pallet Layer	16 Cases	Pallet Height	1.4 MTR			
	Quantity of Layers Per Pallet	9 Layers	Pallet Gross Weight	479.5 kg			
PACKAGING	Quantity of Cases Per Pallet						
	144 Cases						
	Inner Pack Packaging						
	Type	Materials	Weight	Recycled Plastic %	Recyclable	Returnable	Composite
	Bag	Plastic / PE (Polyethylene)	6 g	- %	Yes	No	
	Outer Case Packaging						
	Type	Materials	Weight	Recycled Plastic %	Recyclable	Returnable	Composite
	Case	Paper/Cardboard / Corrugated	200 g	- %	Yes		
	Transport Packaging						
	Type	Materials	Weight	Recycled Plastic %	Recyclable	Returnable	Composite
Pallet	Wood	25000 g	- %	Yes			
OTHER INFORMATION							

CONTACT
INFORMATION

Address

The UK Foodhall Ltd
2 Darwin Court
Oxon Business Park
Shrewsbury
Shropshire
SY3 5AL
England

P: (Phone) 0845 3011182

Complaints Contact

wemayhaveaproblem@karenmcquade.com

P: (Phone) 0345-3011182

Technical Contact

Clara Edwards
Technical Manager
technical@karenmcquade.com

P: (Phone) 0345-3011182

Commercial Contact

Shaun Mancrief
Commercial Director
supplychain@karenmcquade.com

P: (Phone) 03453011182

The information on the [Erudus System](#) has been supplied by the manufacturers of the products and, whilst the owners of the Erudus System take steps to ensure the information is regularly updated, they give no warranty and no guarantee that the information is accurate. Product information and ingredients may change, please always read product labels carefully in addition to using the information provided by Erudus.

We do not accept liability for any inaccuracies or incorrect information contained on this site.
Please visit <http://www.erudus.com/terms-and-conditions> for full terms and conditions.