

09389

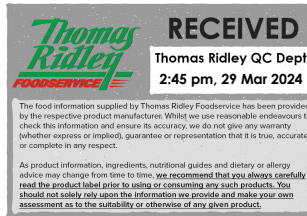
# Lamb Weston Seasoned Crispy Cubes (2.5 kg)

Lamb Weston Seasoned Crispy Cubes (2.5 Kg)

## PRODUCT DESCRIPTION

Seasoned Potato Cubes Pre-fried, deep-frozen seasoned potato product.

<b>Brand</b>	Lamb Weston Meijer
<b>Manufacturer Product Code</b>	Q19 (20909)
<b>Product Type</b>	Food
<b>Product Category</b>	Potato Products
<b>Storage Type</b>	Frozen
<b>Erudus ID</b>	de3978914a4442be9b6a7a98ba43b953
<b>Specification Type</b>	Legacy



<b>Inner Component GTIN</b>	8711571017190
<b>Outer Case GTIN</b>	8711571017206



## INGREDIENTS

### Ingredient Declaration

Potatoes (87%), (Coating 7%) (**WHEAT** flour, Salt, Modified starch, Garlic powder, Spices, Onion powder, Raising agent (E450, E500), Yeast extract, Dextrose, Spice extracts), Vegetable oils (rapeseed, sunflower, in varying proportions) (6%).

## ALLERGENS

Product Contains:

<b>Celery/Celeriac</b>	No	<b>Mustard</b>	No
<b>Cereals Containing Gluten</b>	Yes	<b>Nuts (Tree)</b>	No
<b>Barley</b>	No	<b>Almond nuts</b>	No
<b>Oats</b>	No	<b>Brazil nuts</b>	No
<b>Rye</b>	No	<b>Cashew nuts</b>	No
<b>Wheat (including Spelt and Khorasan)</b>	Yes	<b>Hazelnuts</b>	No
<b>Gluten content &lt;20ppm</b>	No	<b>Macadamia (Queensland) nuts</b>	No
<b>Crustacea</b>	No	<b>Pecan nuts</b>	No
<b>Eggs</b>	No	<b>Pistachio nuts</b>	No
<b>Fish</b>	No	<b>Walnuts</b>	No
<b>Lupin</b>	No	<b>Peanuts</b>	No
<b>Milk</b>	No	<b>Sesame Seeds</b>	No
<b>Molluscs</b>	No	<b>Soybeans</b>	No
		<b>Sulphur Dioxide and Sulphites</b>	No

## SUPPLEMENTARY INGREDIENT INFORMATION

<b>Palm Oil</b>	No
<b>Hydrogenated Vegetable Oil/Fat</b>	No
<b>GM Protein/DNA</b>	No

## ADDITIVES

Product Contains:

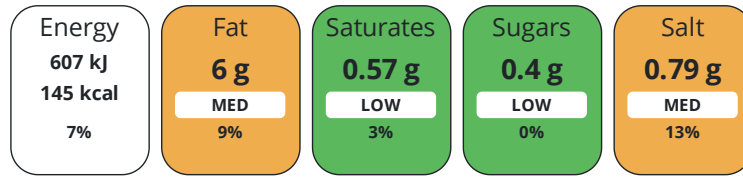
<b>Artificial Antioxidants</b>	No	<b>Artificial Flavourings</b>	No
<b>Artificial Colours</b>	No	<b>Artificial Preservatives</b>	No
<b>Artificial Flavour Enhancers</b>	No	<b>Artificial Sweeteners</b>	No

DIET  
SUITABILITY

<b>Suitable for Coeliacs</b>	No	<b>Halal Diet</b>	No
<b>Kosher Diet</b>	No	<b>Vegetarian Diet</b>	Suitable for
<b>Vegan Diet</b>	Suitable for		

NUTRITIONAL  
INFORMATION

Each 100g/ml portion contains:



of your reference intake.

Typical values per 100g/ml : Energy 145kcal / 607kJ

Nutrient	per 100g/ml	RI per 100g/ml	per 100g/ml serving	RI per 100g/ml serving
<b>Energy (kJ)</b>	607 kJ	7%	607 kJ	7%
<b>Energy (kcal)</b>	145 kcal	7%	145 kcal	7%
<b>Fat</b>	6 g	9%	6 g	9%
<b>of which Saturates</b>	0.57 g	3%	0.6 g	3%
<b>Carbohydrate</b>	19 g	7%	19 g	7%
<b>of which Sugars</b>	0.4 g	0%	0.4 g	0%
<b>Fibre</b>	2.6 g		2.6 g	
<b>Protein</b>	2.3 g	5%	2.3 g	5%
<b>Salt</b>	0.79 g	13%	0.8 g	13%
<b>Serving Size</b>	100 g			

SUPPLEMENTARY  
NUTRITIONAL  
INFORMATION

HANDLING &  
STORAGE  
INFORMATION

**Directions For Use**

Fryer: fry for 3:30 min. at 175°C . Fry or bake products until crispy. Oven: cook for 15-20 min. at 200°C. Turn product halfway cooking time. Cook from frozen. Do not overcook.

**Storage Instructions**

Deep-frozen (18°C). Do not re-freeze once thawed.

**Shelf Life from Time of Production** 548 Days

ACCREDITATIONS/  
CERTIFICATIONS/  
ASSURANCE  
SCHEMES  
ORIGIN

**BRCGS Certified**

**Other Accreditation**

**Product Country of Origin/Place of** Netherlands (the)

**Provenance**

Standards Testing

PRODUCT  
CHARACTERISTICS

**Do you undertake trend analysis of microbiological results?** Yes

**Is shelf life testing undertaken?** Yes

Microbiological Standards

Organism	Description	Frequency	Target	Maximum	Sample (g or ml)
Coliforms (cfu/g or ml)	once a month on a random product per line.	Monthly	<100	100	2500
E. Coli (cfu/g or ml)	once a month on a random product per line.	Monthly	<10	10	2500

Organism	Description	Frequency	Target	Maximum	Sample (g or ml)
Enterobacteriaceae (cfu/g or ml)	once a month on a random product per line.	Monthly	<100	100	2500
Listeria SPP (cfu/g or ml)	once a month on a random product per line.	Monthly	<100	100	2500
Staphylococcus Aureus (cfu/g or ml)	once a month on a random product per line.	Monthly	<100	100	2500
Salmonella (cfu/g or ml)	once a month on a random product per line.	Monthly	=0	0	2500
Yeast (cfu/g or ml)	once a month on a random product per line.	Monthly	<1000	1000	2500
Moulds (cfu/g or ml)	once a month on a random product per line.	Monthly	<1000	1000	2500
Aerobic Colony Count (ACC) (cfu/g or ml)	once a month on a random product per line.	Monthly	<100000	100000	2500

Physical Standards

Test	Description	Frequency	Target	Range	Sample (g or ml)
Colour AGTRON	Cooked	Hourly	=30	25 to 35	680
Defects Gross diameter > 12mm pieces per (2500g) (pieces per)	Frozen	Hourly	=0	0 to 1	2500
Defects Gross diameter 6-12mm pieces per (2500g) (pieces per)	Frozen	Hourly	<7	0 to 8	2500
Defects Gross diameter 3-6mm pieces per (2500g) (pieces per)	Frozen	Hourly	<18	0 to 22	2500

CONFIGURATION

Case Configuration

Inner Pack Configuration

<b>Total Quantity of Inner Components in Outer Case</b>	4 Units
<b>Is the Outer Case Splittable?</b>	Yes

PRODUCT WEIGHTS

Inner Component	
<b>Variable Weight Consumer Item</b>	No
<b>Inner Component Weight</b>	2.5 kg
Outer Case	
<b>Outer Case Gross Weight</b>	10.33 kg
<b>Outer Case Net Weight</b>	10.08 kg

PRODUCT DIMENSIONS

Inner Component	
<b>Inner Component Depth</b>	380 mm
<b>Inner Component Width</b>	338 mm
<b>Inner Component Height</b>	47 mm
Outer Case	
<b>Outer Case Depth</b>	385 mm
<b>Outer Case Width</b>	250 mm
<b>Outer Case Height</b>	190 mm

PALLET INFORMATION

<b>Quantity of Cases Per Pallet Layer</b>	12 Cases	<b>Pallet Height</b>	1.73 MTR
<b>Quantity of Layers Per Pallet</b>	8 Layers	<b>Pallet Gross Weight</b>	1016 kg
<b>Quantity of Cases Per Pallet</b>	96 Cases		

## PACKAGING

## Inner Component Packaging

Type	Materials	Weight	Recycled Plastic %	Recyclable	Returnable	Composite
Bag	Plastic	10.04 g	- %			

## Outer Case Packaging

Type	Materials	Weight	Recycled Plastic %	Recyclable	Returnable	Composite
Case	Paper/Cardboard	280 g	- %			

## Transport Packaging

Type	Materials	Weight	Recycled Plastic %	Recyclable	Returnable	Composite
Other	Plastic	260 g	- %		Yes	
Other	Wood	24800 g	- %		Yes	

## OTHER INFORMATION

**Intrastat/Taric Code** 20041010

**Manufacturer Comments**

none

## CONTACT INFORMATION

## Address

Lamb Weston Meijer  
Stationweg 18a  
Postbus 17  
Kruiningen  
4416 ZG  
Netherlands (the)

**P. (Phone)** +31 113 394 955

The information on the [Erudus System](#) has been supplied by the manufacturers of the products and, whilst the owners of the Erudus System take steps to ensure the information is regularly updated, they give no warranty and no guarantee that the information is accurate. Product information and ingredients may change, please always read product labels carefully in addition to using the information provided by Erudus.

We do not accept liability for any inaccuracies or incorrect information contained on this site.  
Please visit <http://www.erudus.com/terms-and-conditions> for full terms and conditions.