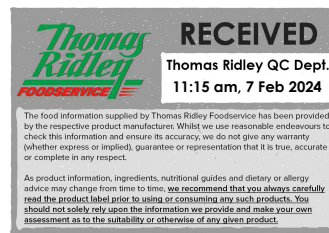


Changed Feb 06, 2024 21:49

Reviewed Feb 06, 2024 21:49

Erudus ID 5644e6bd3a67458cb63c0af7d95c11a9

Version 4.0



# Lamb Weston Seasoned Wedges 4x2.5Kg

Seasoned Wedges 4x2.5kg

## PRODUCT DESCRIPTION

Pre-fried - deep-frozen seasoned potato wedges

Brand	Lamb Weston Meijer
Manufacturer Product Code	W01 (49349)
Product Type	Food
Product Category	Potato Products
Storage Type	Frozen
Erudus ID	5644e6bd3a67458cb63c0af7d95c11a9
Specification Type	Generic



Inner Component GTIN	8711571023016
Outer Case GTIN	8711571023214



## INGREDIENTS

### Ingredient Declaration

Potatoes (86%), Coating (8%) [WHEAT flour, Salt, Modified Potato Starch, Starch, Spices (Black Pepper, Chilli pepper, Cayenne pepper), Garlic Powder, Onion powder, Raising agents (E450i, E500ii), Yeast Extract, Spice Extracts (Black Pepper), Dextrose], Vegetable oils (rapeseed, sunflower, in varying proportions) (6%).

## ALLERGENS

Product Contains:

Celery/Celeriac	No	Mustard	No
Cereals Containing Gluten	Yes	Nuts (Tree)	No
Barley	No	Almond nuts	No
Oats	No	Brazil nuts	No
Rye	No	Cashew nuts	No
Wheat (including Spelt and Khorasan)	Yes	Hazelnuts	No
Crustacea	No	Macadamia (Queensland) nuts	No
Eggs	No	Pecan nuts	No
Fish	No	Pistachio nuts	No
Lupin	No	Walnuts	No
Milk	No	Peanuts	No
Molluscs	No	Sesame Seeds	No
		Soybeans	No
		Sulphur Dioxide and Sulphites	No

## SUPPLEMENTARY INGREDIENT INFORMATION

Palm Oil	No
Hydrogenated Vegetable Oil/Fat	No
GM Protein/DNA	No

ADDITIVES

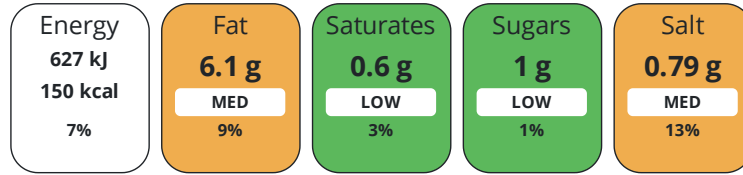
Product Contains:

<b>Artificial Antioxidants</b>	No	<b>Artificial Flavourings</b>	No
<b>Artificial Colours</b>	No	<b>Artificial Preservatives</b>	No
<b>Artificial Flavour Enhancers</b>	No	<b>Artificial Sweeteners</b>	No
<b>Vegan Diet</b>	Suitable for	<b>Vegetarian Diet</b>	Suitable for
<b>Halal Diet</b>	Certified	<b>Kosher Diet</b>	No

DIET  
SUITABILITY

NUTRITIONAL  
INFORMATION

Each 100g/ml portion contains:



of your reference intake.

Typical values per 100g/ml : Energy 150kcal / 627kj

Nutrient	per 100g	RI per 100g
<b>Energy (kJ)</b>	627 kJ	7%
<b>Energy (kcal)</b>	150 kcal	8%
<b>Fat</b>	6.1 g	9%
<b>of which Saturates</b>	0.6 g	3%
<b>Carbohydrate</b>	20 g	8%
<b>of which Sugars</b>	1 g	1%
<b>Fibre</b>	2.3 g	
<b>Protein</b>	2.5 g	5%
<b>Salt</b>	0.79 g	13%

SUPPLEMENTARY  
NUTRITIONAL  
INFORMATION

HANDLING &  
STORAGE  
INFORMATION

**Directions For Use**

Fryer: Fry for 3:15 min. at 175°C. Fry or bake products until crispy. Oven: Cook for 15 - 20 min. at 200°C. Turn product halfway cooking time. Do not overcook. Pan: fry 12-15 min. at medium heat.

**Storage Instructions**

Deep-frozen -18°C for 18 months Do not refreeze once thawed.

<b>Shelf Life from Time of Production</b>	548 Days	<b>Exempt From Shelf Life Labelling</b>	No
---	----------	---	----

ACCREDITATIONS/  
CERTIFICATIONS/  
ASSURANCE  
SCHEMES



ORIGIN

**Product Country of Origin/Place of** Netherlands (the)

**Provenance**

**Additional Origin Details**

Manufacturing sites Kruijningen and Bergen op Zoom

PRODUCT  
CHARACTERISTICS

Standards Testing

<b>Do you undertake trend analysis of microbiological results?</b>	Yes	<b>Is shelf life testing undertaken?</b>	Yes
--	-----	--	-----

## Microbiological Standards

Organism	Description	Frequency	Target	Maximum	Sample (g or ml)
Bacillus Cereus (cfu/g or ml)	1 bag of finished product	Monthly	<100	100	2500
Coliforms (cfu/g or ml)	1 bag of finished product	Monthly	<100	100	2500
E. Coli (cfu/g or ml)	1 bag of finished product	Monthly	<10	10	2500
Listeria Monocytogenes (cfu/g or ml)	1 bag of finished product	Monthly	<100	100	2500
Staphylococcus Aureus (cfu/g or ml)	1 bag of finished product	Monthly	<100	100	2500
Salmonella (cfu/g or ml)	1 bag of finished product	Monthly	<0	0	2500
Yeast (cfu/g or ml)	1 bag of finished product	Monthly	<1000	1000	2500
Moulds (cfu/g or ml)	1 bag of finished product	Monthly	<1000	1000	2500
Aerobic Colony Count (ACC) (cfu/g or ml)	1 bag of finished product	Monthly	<10000	10000	2500

## Physical Standards

Test	Description	Frequency	Target	Range	Sample (g or ml)
Colour AGTRON	Cooked	Hourly	<30	25 to 35	680
Defects Gross diameter > 12mm pieces per (500g) (pieces per)	Frozen	Hourly	=0	0 to 1	2500
Defects Gross diameter 6-12mm pieces per (500g) (pieces per)	Frozen	Hourly	<2	0 to 5	2500

## CONFIGURATION

Case Configuration

Inner Pack Configuration

**Total Quantity of Inner Components in** 4 Units**Outer Case****Is the Outer Case Splittable?** Yes

## PRODUCT WEIGHTS

Inner Component

**Variable Weight Consumer Item** No**Inner Component Weight** 2.5 kg

Outer Case

**Outer Case Gross Weight** 10.37 kg**Outer Case Net Weight** 10 kg

## PRODUCT DIMENSIONS

Inner Component

**Inner Component Depth** 400 mm**Inner Component Width** 338 mm**Inner Component Height** 47 mm

Outer Case

**Outer Case Depth** 385 mm**Outer Case Width** 250 mm**Outer Case Height** 190 mm

## PALLET INFORMATION

**Non Palletised** Yes

## PACKAGING

Inner Component Packaging

Type	Materials	Weight	Recycled Plastic %	Recyclable	Returnable	Composite
Bag	Plastic	10.52 g	- %			

Outer Case Packaging

Type	Materials	Weight	Recycled Plastic %	Recyclable	Returnable	Composite
Case	Paper/Cardboard	330 g	- %			

Transport Packaging

Type	Materials	Weight	Recycled Plastic %	Recyclable	Returnable	Composite
Other	Plastic	260 g	0.00 %			
Other	Wood	25000 g	- %			

OTHER INFORMATION

<b>Intrastat/Taric Code</b>	20041099
<b>Commodity Code</b>	20041099

**Manufacturer Comments**

The Delivery Lead Time is 5 workdays from the NL to the UK and 4 workdays from UK to UK.

CONTACT INFORMATION

Address

Lamb Weston Meijer  
 Stationweg 18a  
 Postbus 17  
 Kruiningen  
 4416 ZG  
 Netherlands (the)

P. (Phone) +31 113 394 955

The information on the [Erudus System](#) has been supplied by the manufacturers of the products and, whilst the owners of the Erudus System take steps to ensure the information is regularly updated, they give no warranty and no guarantee that the information is accurate. Product information and ingredients may change, please always read product labels carefully in addition to using the information provided by Erudus.

We do not accept liability for any inaccuracies or incorrect information contained on this site.  
 Please visit <http://www.erudus.com/terms-and-conditions> for full terms and conditions.