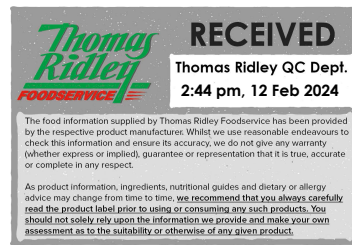


Changed Feb 12, 2024 12:48

Reviewed Feb 12, 2024 12:48

Erudus ID 9d6139724fd346a98d2c2aac214b7a67

Version 2.0



# MULLERICE Mixed Case 12x1x170

Mullerice Mixed Case 12x1x170 (Multipack)

## PRODUCT DESCRIPTION

MULLERICE Mixed Case 12x1x170

Brand	Muller Yoghurt and Desserts
Manufacturer Product Code	74733
Product Type	Food
Product Category	Desserts
Storage Type	Chilled
Erudus ID	9d6139724fd346a98d2c2aac214b7a67
Specification Type	Dairy

## MULLERICE Strawberry 12x1x170

Inner Component GTIN	4025500278090
Manufacturer Component Code	74726
Outer Case GTIN	4025500278151



## INGREDIENTS

### Ingredient Declaration

BUTTERMILK, Water, Sugar, Rice (7%), Skimmed MILK from Concentrate, Strawberries (5%), Cream (MILK) (4%), Skimmed MILK, Modified Maize Starch, Stabiliser Guar Gum Salt, Flavourings, Colouring Food: Beetroot Juice Concentrate, Acidity Regulators Citric Acid Sodium Citrates, Colour Carmines.

### Ingredient Statements

may contain cereals containing gluten and soya

## ALLERGENS

Product Contains:

<b>Celery/Celeriac</b>	No	<b>Mustard</b>	No
<b>Cereals Containing Gluten</b>	May Contain	<b>Nuts (Tree)</b>	No
<b>Barley</b>	May Contain	<b>Almond nuts</b>	No
<b>Oats</b>	May Contain	<b>Brazil nuts</b>	No
<b>Rye</b>	May Contain	<b>Cashew nuts</b>	No
<b>Wheat (including Spelt and Khorasan)</b>	May Contain	<b>Hazelnuts</b>	No
<b>Crustacea</b>	No	<b>Macadamia (Queensland) nuts</b>	No
<b>Eggs</b>	No	<b>Pecan nuts</b>	No
<b>Fish</b>	No	<b>Pistachio nuts</b>	No
<b>Lupin</b>	No	<b>Walnuts</b>	No
<b>Milk</b>	Yes	<b>Peanuts</b>	No
<b>Molluscs</b>	No	<b>Sesame Seeds</b>	No
		<b>Soybeans</b>	May Contain
		<b>Sulphur Dioxide and Sulphites</b>	No

Risk Source:

<b>Cereals Containing Gluten (Risk Source)</b>	Raw Material	<b>Barley (Risk Source)</b>	Raw Material
<b>Oats (Risk Source)</b>	Raw Material	<b>Rye (Risk Source)</b>	Raw Material
<b>Wheat (Risk Source)</b>	Raw Material	<b>Soybeans (Risk Source)</b>	Raw Material

**Allergen Statement On Pack**

may contain cereals containing gluten and soya

**SUPPLEMENTARY  
INGREDIENT  
INFORMATION**

<b>Palm Oil</b>	No
<b>Hydrogenated Vegetable Oil/Fat</b>	No
<b>GM Protein/DNA</b>	No

**ADDITIVES**

Product Contains:

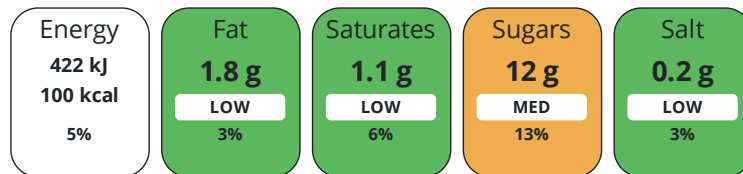
<b>Artificial Antioxidants</b>	No	<b>Artificial Flavourings</b>	Yes
<b>Artificial Colours</b>	No	<b>Artificial Preservatives</b>	No
<b>Artificial Flavour Enhancers</b>	No	<b>Artificial Sweeteners</b>	No

**DIET  
SUITABILITY**

<b>Vegetarian Diet</b>	No	<b>Halal Diet</b>	No
<b>Kosher Diet</b>	No		

**NUTRITIONAL  
INFORMATION**

Each 100g/ml portion contains:



of your reference intake.

Typical values per 100g/ml : Energy 100kcal / 422kj

Nutrient	per 100g	RI per 100g	per 170g serving	RI per 170g serving
<b>Energy (kJ)</b>	422 kJ	5%	717.4 kJ	9%
<b>Energy (kcal)</b>	100 kcal	5%	170 kcal	9%
<b>Fat</b>	1.8 g	3%	3.1 g	4%
<b>of which Saturates</b>	1.1 g	6%	1.9 g	10%
<b>Carbohydrate</b>	17.9 g	7%	30.4 g	12%
<b>of which Sugars</b>	12 g	13%	20.4 g	23%
<b>Protein</b>	3 g	6%	5.1 g	10%
<b>Salt</b>	0.2 g	3%	0.3 g	5%
<b>Serving Size</b>	170 g			

**VITAMINS AND  
MINERALS**

Nutrient	per 100g	RI per 100g	per 170g serving	RI per 170g serving
<b>Calcium</b>	72 mg	9%	122.4 mg	15%

**SUPPLEMENTARY  
NUTRITIONAL  
INFORMATION**
**HFSS (HIGH IN  
FAT, SALT AND  
SUGAR)  
HANDLING &  
STORAGE  
INFORMATION**

<b>HFSS Status</b>	No
--------------------	----

**Directions For Use**

use by. can be eaten hot or cold. see pot for guidelines

**Storage Instructions**

Keep Refrigerated

<b>Shelf Life from Time of Production</b>	24 Days	<b>Exempt From Shelf Life Labelling</b>	No
---	---------	---	----

ORIGIN	<b>Product Country of Origin/Place of Provenance</b>	United Kingdom						
PRODUCT CHARACTERISTICS	Standards Testing							
	<b>Do you undertake trend analysis of microbiological results?</b>	No	<b>Is shelf life testing undertaken?</b>			No		
CONFIGURATION	Case Configuration	Inner Pack Configuration						
	<b>Total Quantity of Inner Components in Outer Case</b>	12 Units						
PRODUCT WEIGHTS	Inner Component							
	<b>Variable Weight Consumer Item</b>	No						
	<b>Inner Component Weight</b>	170 g						
	Outer Case							
	<b>Outer Case Gross Weight</b>	2.18 kg						
PRODUCT DIMENSIONS	<b>Outer Case Net Weight</b>	2.18 kg						
	Inner Component							
	<b>Inner Component Depth</b>	95 mm						
	<b>Inner Component Width</b>	95 mm						
	<b>Inner Component Height</b>	54 mm						
	Outer Case							
	<b>Outer Case Depth</b>	393 mm						
<b>Outer Case Width</b>	296 mm							
PALLET INFORMATION	<b>Outer Case Height</b>	66 mm						
	<b>Quantity of Cases Per Pallet Layer</b>	10 Cases			<b>Pallet Height</b>	1.35 MTR		
	<b>Quantity of Layers Per Pallet</b>	20 Layers			<b>Pallet Gross Weight</b>	436 kg		
	<b>Quantity of Cases Per Pallet</b>	200 Cases						
PACKAGING	Inner Component Packaging							
	<b>Type</b>	<b>Materials</b>	<b>Weight</b>	<b>Recycled Plastic %</b>	<b>Recyclable</b>	<b>Returnable</b>	<b>Composite</b>	
	Pot	Plastic	8.5 g	- %				
	Pot	Aluminium	0.82 g	- %				
	Outer Case Packaging							
	<b>Type</b>	<b>Materials</b>	<b>Weight</b>	<b>Recycled Plastic %</b>	<b>Recyclable</b>	<b>Returnable</b>	<b>Composite</b>	
	Case	Paper/Cardboard	144.41 g	- %				
	OTHER INFORMATION	<b>Identification/Health Marks</b>					GB NP005	

# MULLERICE Apple 12x1x170

**Inner Component GTIN** 4025500278106

**Manufacturer Component Code** 74727

**Outer Case GTIN** 4025500278151



## INGREDIENTS

### Ingredient Declaration

BUTTERMILK, Water, Sugar, Rice (7%), Skimmed MILK from Concentrate, Apples (5%), Cream (MILK) (4%), Skimmed MILK, Apple Juice from Concentrate (3%), Modified Maize Starch, Stabiliser Guar Gum, Salt, Acidity Regulators Ascorbic Acid and Sodium Citrates Citric Acid, Flavourings.

### Ingredient Statements

may contain cereals containing gluten and soya

## ALLERGENS

*Product Contains:*

<b>Celery/Celeriac</b>	No	<b>Mustard</b>	No
<b>Cereals Containing Gluten</b>	May Contain	<b>Nuts (Tree)</b>	No
<b>Barley</b>	May Contain	<b>Almond nuts</b>	No
<b>Oats</b>	May Contain	<b>Brazil nuts</b>	No
<b>Rye</b>	May Contain	<b>Cashew nuts</b>	No
<b>Wheat (including Spelt and Khorasan)</b>	May Contain	<b>Hazelnuts</b>	No
<b>Crustacea</b>	No	<b>Macadamia (Queensland) nuts</b>	No
<b>Eggs</b>	No	<b>Pecan nuts</b>	No
<b>Fish</b>	No	<b>Pistachio nuts</b>	No
<b>Lupin</b>	No	<b>Walnuts</b>	No
<b>Milk</b>	Yes	<b>Peanuts</b>	No
<b>Molluscs</b>	No	<b>Sesame Seeds</b>	No
		<b>Soybeans</b>	May Contain
		<b>Sulphur Dioxide and Sulphites</b>	No

*Risk Source:*

<b>Cereals Containing Gluten (Risk Source)</b>	Raw Material	<b>Barley (Risk Source)</b>	Raw Material
<b>Oats (Risk Source)</b>	Raw Material	<b>Rye (Risk Source)</b>	Raw Material
<b>Wheat (Risk Source)</b>	Raw Material	<b>Soybeans (Risk Source)</b>	Raw Material

### Allergen Statement On Pack

may contain cereals containing gluten and soya

## SUPPLEMENTARY INGREDIENT INFORMATION

<b>Palm Oil</b>	No
<b>Hydrogenated Vegetable Oil/Fat</b>	No
<b>GM Protein/DNA</b>	No

## ADDITIVES

*Product Contains:*

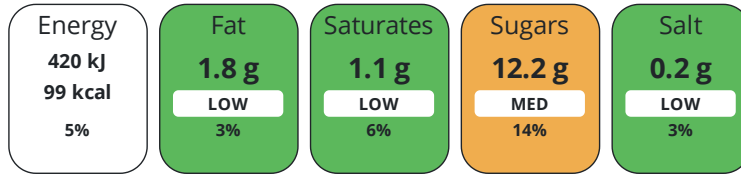
<b>Artificial Antioxidants</b>	No	<b>Artificial Flavourings</b>	Yes
<b>Artificial Colours</b>	No	<b>Artificial Preservatives</b>	No
<b>Artificial Flavour Enhancers</b>	No	<b>Artificial Sweeteners</b>	No

## DIET SUITABILITY

<b>Vegetarian Diet</b>	Suitable for	<b>Halal Diet</b>	No
<b>Kosher Diet</b>	No		

NUTRITIONAL  
INFORMATION

Each 100g/ml portion contains:



of your reference intake.

Typical values per 100g/ml : Energy 99kcal / 420kj

Nutrient	per 100g	RI per 100g	per 170g serving	RI per 170g serving
Energy (kJ)	420 kJ	5%	714 kJ	9%
Energy (kcal)	99 kcal	5%	168.3 kcal	8%
Fat	1.8 g	3%	3.1 g	4%
of which Saturates	1.1 g	6%	1.9 g	10%
Carbohydrate	17.8 g	7%	30.3 g	12%
of which Sugars	12.2 g	14%	20.7 g	23%
Protein	3 g	6%	5.1 g	10%
Salt	0.2 g	3%	0.3 g	5%
Serving Size	170 g			

VITAMINS AND  
MINERALS

Nutrient	per 100g	RI per 100g	per 170g serving	RI per 170g serving
Calcium	72 mg	9%	122.4 mg	15%

SUPPLEMENTARY  
NUTRITIONAL  
INFORMATION

HFSS (HIGH IN  
FAT, SALT AND  
SUGAR)  
HANDLING &  
STORAGE  
INFORMATION

HFSS Status	No			
Directions For Use	use by. can be eaten hot or cold. see pot for guidelines.			
Storage Instructions	Keep Refrigerated			
Shelf Life from Time of Production	24 Days	Exempt From Shelf Life Labelling	No	

ORIGIN

Product Country of Origin/Place of Provenance	United Kingdom			
---	----------------	--	--	--

PRODUCT  
CHARACTERISTICS

Standards Testing				
Do you undertake trend analysis of microbiological results?	No	Is shelf life testing undertaken?	No	

CONFIGURATION

Case Configuration	Inner Pack Configuration			
Total Quantity of Inner Components in Outer Case	12 Units			

PRODUCT WEIGHTS

Inner Component	
<b>Variable Weight Consumer Item</b>	No
<b>Inner Component Weight</b>	170 g
Outer Case	
<b>Outer Case Gross Weight</b>	2.18 kg
<b>Outer Case Net Weight</b>	2.18 kg

PRODUCT DIMENSIONS

Inner Component	
<b>Inner Component Depth</b>	95 mm
<b>Inner Component Width</b>	95 mm
<b>Inner Component Height</b>	54 mm
Outer Case	
<b>Outer Case Depth</b>	393 mm
<b>Outer Case Width</b>	296 mm
<b>Outer Case Height</b>	66 mm

PALLET INFORMATION

<b>Quantity of Cases Per Pallet Layer</b>	10 Cases	<b>Pallet Height</b>	1.35 MTR
<b>Quantity of Layers Per Pallet</b>	20 Layers	<b>Pallet Gross Weight</b>	436 kg
<b>Quantity of Cases Per Pallet</b>	200 Cases		

PACKAGING

Inner Component Packaging						
Type	Materials	Weight	Recycled Plastic %	Recyclable	Returnable	Composite
Pot	Plastic	8.5 g	- %			
Pot	Aluminium	0.82 g	- %			
Outer Case Packaging						
Type	Materials	Weight	Recycled Plastic %	Recyclable	Returnable	Composite
Case	Paper/Cardboard	144.41 g	- %			

OTHER INFORMATION

<b>Identification/Health Marks</b>	GB NP005
------------------------------------	----------

# MULLERICE Original 12x1x170

**Inner Component GTIN** 4025500278113

**Manufacturer Component Code** 74728

**Outer Case GTIN** 4025500278151



## INGREDIENTS

### Ingredient Declaration

BUTTERMILK, Water, Rice (8%), Skimmed MILK from Concentrate, Sugar, Cream (MILK) (5%), Skimmed MILK, Stabiliser Guar Gum, Salt, Flavourings.

### Ingredient Statements

may contain cereals containing gluten and soya

## ALLERGENS

*Product Contains:*

<b>Celery/Celeriac</b>	No	<b>Mustard</b>	No
<b>Cereals Containing Gluten</b>	May Contain	<b>Nuts (Tree)</b>	No
<b>Barley</b>	May Contain	<b>Almond nuts</b>	No
<b>Oats</b>	May Contain	<b>Brazil nuts</b>	No
<b>Rye</b>	May Contain	<b>Cashew nuts</b>	No
<b>Wheat (including Spelt and Khorasan)</b>	May Contain	<b>Hazelnuts</b>	No
<b>Crustacea</b>	No	<b>Macadamia (Queensland) nuts</b>	No
<b>Eggs</b>	No	<b>Pecan nuts</b>	No
<b>Fish</b>	No	<b>Pistachio nuts</b>	No
<b>Lupin</b>	No	<b>Walnuts</b>	No
<b>Milk</b>	Yes	<b>Peanuts</b>	No
<b>Molluscs</b>	No	<b>Sesame Seeds</b>	No
		<b>Soybeans</b>	May Contain
		<b>Sulphur Dioxide and Sulphites</b>	No

*Risk Source:*

<b>Cereals Containing Gluten (Risk Source)</b>	Raw Material	<b>Barley (Risk Source)</b>	Raw Material
<b>Oats (Risk Source)</b>	Raw Material	<b>Rye (Risk Source)</b>	Raw Material
<b>Wheat (Risk Source)</b>	Raw Material	<b>Soybeans (Risk Source)</b>	Raw Material

### Allergen Statement On Pack

may contain cereals containing gluten and soya

## SUPPLEMENTARY INGREDIENT INFORMATION

<b>Palm Oil</b>	No
<b>Hydrogenated Vegetable Oil/Fat</b>	No
<b>GM Protein/DNA</b>	No

## ADDITIVES

*Product Contains:*

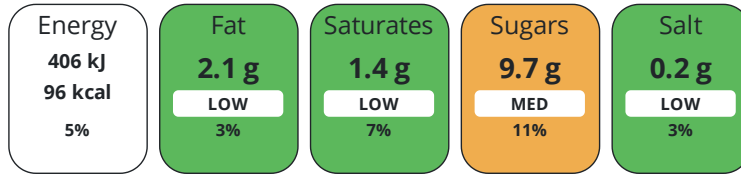
<b>Artificial Antioxidants</b>	No	<b>Artificial Flavourings</b>	Yes
<b>Artificial Colours</b>	No	<b>Artificial Preservatives</b>	No
<b>Artificial Flavour Enhancers</b>	No	<b>Artificial Sweeteners</b>	No

## DIET SUITABILITY

<b>Vegetarian Diet</b>	Suitable for	<b>Halal Diet</b>	No
<b>Kosher Diet</b>	No		

NUTRITIONAL  
INFORMATION

Each 100g/ml portion contains:



of your reference intake.

Typical values per 100g/ml : Energy 96kcal / 406kj

Nutrient	per 100g	RI per 100g	per 170g serving	RI per 170g serving
Energy (kJ)	406 kJ	5%	690.2 kJ	8%
Energy (kcal)	96 kcal	5%	163.2 kcal	8%
Fat	2.1 g	3%	3.6 g	5%
of which Saturates	1.4 g	7%	2.4 g	12%
Carbohydrate	15.8 g	6%	26.9 g	10%
of which Sugars	9.7 g	11%	16.5 g	18%
Protein	3.5 g	7%	6 g	12%
Salt	0.2 g	3%	0.3 g	5%
Serving Size	170 g			

VITAMINS AND  
MINERALS

Nutrient	per 100g	RI per 100g	per 170g serving	RI per 170g serving
Calcium	85 mg	11%	144.5 mg	18%

SUPPLEMENTARY  
NUTRITIONAL  
INFORMATION

HFSS (HIGH IN  
FAT, SALT AND  
SUGAR)  
HANDLING &  
STORAGE  
INFORMATION

HFSS Status	No			
Directions For Use	use by. can be eaten hot or cold. see pot for guidance.			
Storage Instructions	Keep Refrigerated			
Shelf Life from Time of Production	24 Days	Exempt From Shelf Life Labelling	No	

ORIGIN

Product Country of Origin/Place of Provenance	United Kingdom			
---	----------------	--	--	--

PRODUCT  
CHARACTERISTICS

Standards Testing				
Do you undertake trend analysis of microbiological results?	No	Is shelf life testing undertaken?	No	

CONFIGURATION

Case Configuration	Inner Pack Configuration			
Total Quantity of Inner Components in Outer Case	12 Units			



PRODUCT WEIGHTS

Inner Component	
<b>Variable Weight Consumer Item</b>	No
<b>Inner Component Weight</b>	170 g
Outer Case	
<b>Outer Case Gross Weight</b>	2.18 kg
<b>Outer Case Net Weight</b>	2.18 kg

PRODUCT DIMENSIONS

Inner Component	
<b>Inner Component Depth</b>	95 mm
<b>Inner Component Width</b>	95 mm
<b>Inner Component Height</b>	54 mm
Outer Case	
<b>Outer Case Depth</b>	393 mm
<b>Outer Case Width</b>	296 mm
<b>Outer Case Height</b>	66 mm

PALLET INFORMATION

<b>Quantity of Cases Per Pallet Layer</b>	10 Cases	<b>Pallet Height</b>	1.35 MTR
<b>Quantity of Layers Per Pallet</b>	20 Layers	<b>Pallet Gross Weight</b>	436 kg
<b>Quantity of Cases Per Pallet</b>	200 Cases		

PACKAGING

Inner Component Packaging						
Type	Materials	Weight	Recycled Plastic %	Recyclable	Returnable	Composite
Pot	Plastic	8.5 g	- %			
Pot	Aluminium	0.82 g	- %			
Outer Case Packaging						
Type	Materials	Weight	Recycled Plastic %	Recyclable	Returnable	Composite
Case	Paper/Cardboard	144.41 g	- %			

OTHER INFORMATION

<b>Identification/Health Marks</b>	GB NP005
------------------------------------	----------

CONTACT INFORMATION

Address  
 Muller Yoghurt and Desserts  
 Shrewsbury Rd  
 Market Drayton  
 Shropshire  
 TF9 3SQ  
 United Kingdom

P: (Phone) 01630 692000

The information on the [Erudus System](#) has been supplied by the manufacturers of the products and, whilst the owners of the Erudus System take steps to ensure the information is regularly updated, they give no warranty and no guarantee that the information is accurate. Product information and ingredients may change, please always read product labels carefully in addition to using the information provided by Erudus.

We do not accept liability for any inaccuracies or incorrect information contained on this site.  
 Please visit <http://www.erudus.com/terms-and-conditions> for full terms and conditions.