

Changed Apr 12, 2024 11:50

Reviewed Apr 12, 2024 11:50

Erudus ID ef6d3be2e79743fcb7d4286439df5795

Version 1.0

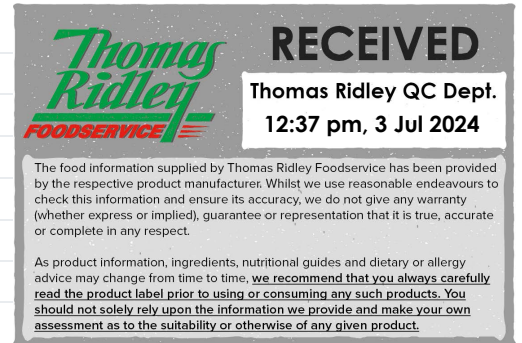
# DVG Hazelnut Flavour Syrup 6 x 1L

Hazelnut Flavour Syrup

## PRODUCT DESCRIPTION

Hazelnut flavoured sweet syrup

Brand	Kerry Ingredients UK Limited
Manufacturer Product Code	20556246
Effective Date	Apr 12, 2024
Product Type	Drink
Product Category	Sugar and Sweeteners
Storage Type	Ambient
Erudus ID	ef6d3be2e79743fcb7d4286439df5795
Specification Type	Generic



Inner Component GTIN 5018010001783



## INGREDIENTS

### Ingredient Declaration

Water, Sugar, Humectant (Glycerol), Natural Flavourings\*, Preservative (Potassium Sorbate), Acidity Regulator (Citric Acid), Colour (Plain Caramel)

\*Declare as Flavouring, Natural Flavouring in French market

## ALLERGENS

Product Contains:

<b>Celery/Celeriac</b>	No	<b>Mustard</b>	No
<b>Cereals Containing Gluten</b>	No	<b>Nuts (Tree)</b>	No
<b>Barley</b>	No	<b>Almond nuts</b>	No
<b>Oats</b>	No	<b>Brazil nuts</b>	No
<b>Rye</b>	No	<b>Cashew nuts</b>	No
<b>Wheat (including Spelt and Khorasan)</b>	No	<b>Hazelnuts</b>	No
<b>Crustacea</b>	No	<b>Macadamia (Queensland) nuts</b>	No
<b>Eggs</b>	No	<b>Pecan nuts</b>	No
<b>Fish</b>	No	<b>Pistachio nuts</b>	No
<b>Lupin</b>	No	<b>Walnuts</b>	No
<b>Milk</b>	No	<b>Peanuts</b>	No
<b>Molluscs</b>	No	<b>Sesame Seeds</b>	No
		<b>Soybeans</b>	No
		<b>Sulphur Dioxide and Sulphites</b>	No

## SUPPLEMENTARY INGREDIENT INFORMATION

<b>Palm Oil</b>	No
<b>Hydrogenated Vegetable Oil/Fat</b>	No
<b>GM Protein/DNA</b>	No

ADDITIVES

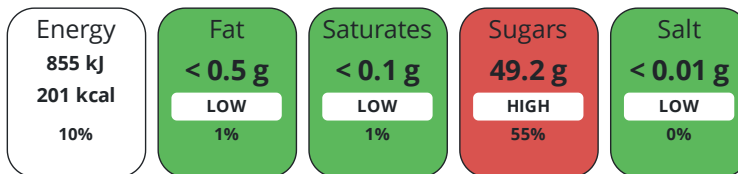
Product Contains:

<b>Artificial Antioxidants</b>	No	<b>Artificial Flavourings</b>	No
<b>Artificial Colours</b>	No	<b>Artificial Preservatives</b>	Yes
<b>Artificial Flavour Enhancers</b>	No	<b>Artificial Sweeteners</b>	No
<b>Vegan Diet</b>	Suitable for	<b>Vegetarian Diet</b>	Suitable for
<b>Halal Diet</b>	Suitable for	<b>Kosher Diet</b>	Suitable for

DIET SUITABILITY

NUTRITIONAL INFORMATION

Each 100g/ml portion contains:



of your reference intake.

Typical values per 100g/ml : Energy 201kcal / 855kj

Nutrient	per 100g	RI per 100g
<b>Energy (kJ)</b>	854.5 kJ	10%
<b>Energy (kcal)</b>	201.1 kcal	10%
<b>Fat</b>	< 0.5 g	1%
<b>of which Saturates</b>	< 0.1 g	1%
<b>of which Mono-unsaturates</b>	< 0.1 g	
<b>of which Polyunsaturates</b>	< 0.1 g	
<b>Carbohydrate</b>	50.3 g	19%
<b>of which Sugars</b>	49.2 g	55%
<b>Fibre</b>	< 0.5 g	
<b>Protein</b>	< 0.5 g	1%
<b>Salt</b>	< 0.01 g	0%
<b>Sodium</b>	< 0.01 mg	

SUPPLEMENTARY NUTRITIONAL INFORMATION

HANDLING & STORAGE INFORMATION

**Directions For Use**

For use in beverages Recommended use : 16ml of syrup per 340mls of latte

**Storage Instructions**

Ambient transportation 10°C- 25°C Store in cool, clean dry warehousing between 10°C- 25°C

**Shelf Life from Time of Production** 730 Days

ACCREDITATIONS/ CERTIFICATIONS/ ASSURANCE SCHEMES ORIGIN

**BRCGS Certified** **BRCGS Food Safety**

**Product Country of Origin/Place of** United Kingdom

**Provenance**

PRODUCT CHARACTERISTICS

Standards Testing

<b>Do you undertake trend analysis of microbiological results?</b>	No	<b>Is shelf life testing undertaken?</b>	No
--	----	--	----

Microbiological Standards

Organism	Description	Frequency	Target	Maximum	Sample (g or ml)
Enterobacteriaceae (cfu/g or ml)	VRBGA, 37°C, 24Hrs	Every Batch	<10	10	-
Total Viable Count (TVC) (cfu/g or ml)	PCA, 30°C, 72Hrs	Every Batch	<100	100	-
Yeast (cfu/g or ml)	WA, 25°C, 5 Days	Every Batch	<10	10	-
Moulds (cfu/g or ml)	WA, 25°C, 5 Days	Every Batch	<10	10	-

#### Analytical Standards

Test	Description	Frequency	Target	Range	Sample (g or ml)
Brix (°Bx)	Refractometer	Every Batch	=49	47 to 51	-
pH	pH Meter	Every Batch	=4.0	3.8 to 4.2	-

#### CONFIGURATION

Case Configuration

Inner Pack Configuration

<b>Variable Inner Components in Outer Case</b>	No
<b>Total Quantity of Inner Components in Outer Case</b>	6 Units
<b>Is the Outer Case Splittable?</b>	Yes

#### PRODUCT WEIGHTS

Inner Component	
<b>Variable Weight Consumer Item</b>	Yes
<b>Inner Component Volume</b>	1 litre
Outer Case	
<b>Outer Case Gross Weight</b>	7.83 kg
<b>Outer Case Net Weight</b>	7.39 kg

#### PRODUCT DIMENSIONS

Inner Component	
<b>Inner Component Depth</b>	86 mm
<b>Inner Component Width</b>	86 mm
<b>Inner Component Height</b>	290 mm
Outer Case	
<b>Outer Case Depth</b>	267 mm
<b>Outer Case Width</b>	180 mm
<b>Outer Case Height</b>	300 mm

#### PALLET INFORMATION

<b>Quantity of Cases Per Pallet Layer</b>	23 Cases	<b>Pallet Height</b>	1.36 MTR
<b>Quantity of Layers Per Pallet</b>	4 Layers		
<b>Quantity of Cases Per Pallet</b>	92 Cases		

#### PACKAGING

Inner Component Packaging						
Type	Materials	Weight	Recycled Plastic %	Recyclable	Returnable	Composite
Bottle	Plastic	63 g	- %			
Outer Case Packaging						
Type	Materials	Weight	Recycled Plastic %	Recyclable	Returnable	Composite
Box	Paper/Cardboard	200 g	- %			

#### OTHER INFORMATION

##### Manufacturer Comments

n/a

CONTACT  
INFORMATION

Address

Kerry Ingredients UK Limited  
Global Technology & Innovation Centre  
Millennium Park  
Naas  
Co.Kildare  
W91 W923  
Ireland

P: (Phone) +00 353 45 931 000

Complaints Contact

Customer Service Europe  
Customer Service Europe  
customerserviceeurope@kerry.com

P: (Phone) +00 353 45 931 000

Technical Contact

Bernard James  
Sales Support  
bernard.james@kerry.com

Commercial Contact

Daren Baalham  
Channel Controller  
daren.baalham@kerry.com

The information on the [Erudus System](#) has been supplied by the manufacturers of the products and, whilst the owners of the Erudus System take steps to ensure the information is regularly updated, they give no warranty and no guarantee that the information is accurate. Product information and ingredients may change, please always read product labels carefully in addition to using the information provided by Erudus.

We do not accept liability for any inaccuracies or incorrect information contained on this site.  
Please visit <http://www.erudus.com/terms-and-conditions> for full terms and conditions.