

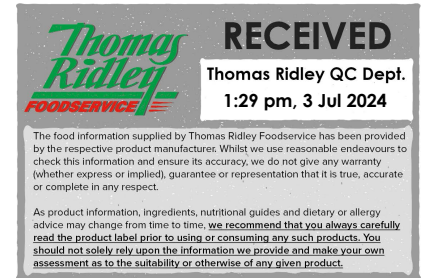
DVG Sugars Free Hazelnut Flavour Syrup with sweeteners 6 x 1L

Hazelnut Flavour Syrup With Sweeteners 6x

PRODUCT DESCRIPTION

Sugars-free hazelnut syrup, made with water, natural flavouring, sweeteners, and preservative.

Brand	Kerry Ingredients UK Limited
Manufacturer Product Code	20556973
Product Type	Drink
Product Category	Sugar and Sweeteners
Storage Type	Ambient
Erudus ID	15938dfb6b9b401ca4beda690ffda0bb
Specification Type	Legacy
Inner Component GTIN	5018010001882
Outer Case GTIN	5018010401880



INGREDIENTS

Ingredient Declaration

Water, Natural Flavourings, Stabiliser (Cellulose Gum), Sweeteners (Acesulfame K, Sucralose), Acidity Regulator (Citric Acid), Preservative (Potassium Sorbate), Colour (Plain Caramel)

ALLERGENS

Product Contains:

Celery/Celeriac	No	Mustard	No
Cereals Containing Gluten	No	Nuts (Tree)	No
Barley	No	Almond nuts	No
Oats	No	Brazil nuts	No
Rye	No	Cashew nuts	No
Wheat (including Spelt and Khorasan)	No	Hazelnuts	No
Gluten content <20ppm	Yes	Macadamia (Queensland) nuts	No
Crustacea	No	Pecan nuts	No
Eggs	No	Pistachio nuts	No
Fish	No	Walnuts	No
Lupin	No	Peanuts	No
Milk	No	Sesame Seeds	No
Molluscs	No	Sulphur Dioxide and Sulphites	No

SUPPLEMENTARY INGREDIENT INFORMATION

Palm Oil	No
Hydrogenated Vegetable Oil/Fat	No
GM Protein/DNA	No

ADDITIVES

Product Contains:

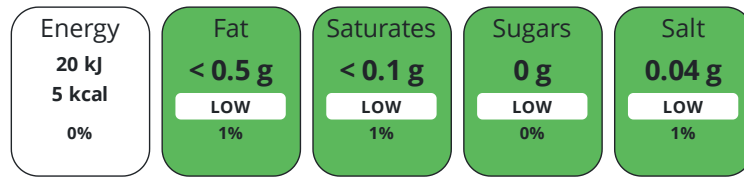
Artificial Antioxidants	No	Artificial Flavourings	No
Artificial Colours	No	Artificial Preservatives	Yes
Artificial Flavour Enhancers	No	Artificial Sweeteners	Yes

DIET
SUITABILITY

Suitable for Coeliacs	Yes	Halal Diet	No
Kosher Diet	No	Vegetarian Diet	Suitable for
Vegan Diet	Suitable for		

NUTRITIONAL
INFORMATION

Each 100g/ml portion contains:



of your reference intake.

Typical values per 100g/ml : Energy 5kcal / 20kj

Nutrient	per 100g/ml	RI per 100g/ml
Energy (kJ)	20.1 kJ	0%
Energy (kcal)	4.7 kcal	0%
Fat	< 0.5 g	1%
of which Saturates	< 0.1 g	1%
of which Mono-unsaturates	< 0.1 g	
of which Polyunsaturates	< 0.1 g	
Carbohydrate	1.1 g	0%
of which Sugars	0 g	0%
Fibre	0.2 g	
Protein	< 0.5 g	1%
Salt	0.04 g	1%
Sodium	16 mg	

SUPPLEMENTARY
NUTRITIONAL
INFORMATION

Trans Fats per 100 g/ml	0 g
--------------------------------	-----

HANDLING &
STORAGE
INFORMATION

Directions For Use

For use in beverages Recommended use: 16ml of syrup per 340mls of latte

Storage Instructions

Ambient transportation 10-25°C Store in cool, clean dry warehousing 10-25°C

Shelf Life from Time of Production	730 Days
---	----------

ACCREDITATIONS/
CERTIFICATIONS/
ASSURANCE
SCHEMES
ORIGIN

BRCGS Certified	
------------------------	--

Product Country of Origin/Place of	United Kingdom
---	----------------

Provenance

Standards Testing

PRODUCT
CHARACTERISTICS

Do you undertake trend analysis of microbiological results?	No	Is shelf life testing undertaken?	No
--	----	--	----

Microbiological Standards

Organism	Description	Frequency	Target	Maximum	Sample (g or ml)
Enterobacteriaceae (cfu/g or ml)	VRBGA, 37°C, 24Hrs	Every Batch	<10	10	-

Organism	Description	Frequency	Target	Maximum	Sample (g or ml)
Total Viable Count (TVC) (cfu/g or ml)	PCA, 30°C, 72Hrs	Every Batch	<100	100	-
Yeast (cfu/g or ml)	WA, 25°C, 5 Days	Every Batch	<10	10	-
Moulds (cfu/g or ml)	WA, 25°C, 5 Days	Every Batch	<10	10	-

Analytical Standards

Test	Description	Frequency	Target	Range	Sample (g or ml)
Brix (°Bx)	Refractometer	Every Batch	=1.5	0.5 to 2.5	-
pH	pH Meter	Every Batch	=3.9	3.7 to 4.1	-

CONFIGURATION

Case Configuration

Inner Pack Configuration

Total Quantity of Inner Components in Outer Case 6 Units

Is the Outer Case Splittable? No

PRODUCT WEIGHTS

Inner Component

Variable Weight Consumer Item No

Weight/Volume

1 ltr

Outer Case

Outer Case Gross Weight 6.47 kg

Outer Case Net Weight 6.02 kg

PRODUCT DIMENSIONS

Inner Component

Inner Component Depth 86 mm

Inner Component Width 86 mm

Inner Component Height 290 mm

Outer Case

Outer Case Depth 267 mm

Outer Case Width 180 mm

Outer Case Height 300 mm

PALLET INFORMATION

Quantity of Cases Per Pallet Layer 23 Cases

Pallet Height 1.36 MTR

Quantity of Layers Per Pallet 4 Layers

Quantity of Cases Per Pallet 92 Cases

PACKAGING

Inner Component Packaging

Type	Materials	Weight	Recycled Plastic %	Recyclable	Returnable	Composite
Bottle	Plastic	37.5 g	- %			

Outer Case Packaging

Type	Materials	Weight	Recycled Plastic %	Recyclable	Returnable	Composite
Case	Paper/Cardboard	200 g	- %			

OTHER INFORMATION

CONTACT
INFORMATION

Address

Kerry Ingredients UK Limited
Global Technology & Innovation Centre
Millennium Park
Naas
Co.Kildare
W91 W923
Ireland

P: (Phone) +00 353 45 931 000

Complaints Contact

Customer Service Europe
Customer Service Europe
customerserviceeurope@kerry.com

P: (Phone) +00 353 45 931 000

Technical Contact

Bernard James
Sales Support
bernard.james@kerry.com

Commercial Contact

Daren Baalham
Channel Controller
daren.baalham@kerry.com

The information on the [Erudus System](#) has been supplied by the manufacturers of the products and, whilst the owners of the Erudus System take steps to ensure the information is regularly updated, they give no warranty and no guarantee that the information is accurate. Product information and ingredients may change, please always read product labels carefully in addition to using the information provided by Erudus.

We do not accept liability for any inaccuracies or incorrect information contained on this site.
Please visit <http://www.erudus.com/terms-and-conditions> for full terms and conditions.