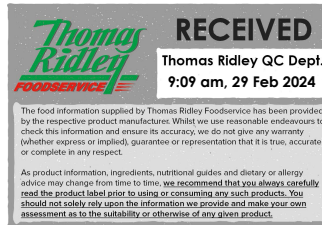


Changed Feb 29, 2024 06:12

Reviewed Feb 29, 2024 06:12

Erudus ID 5aace7ffa55a416689f40872b0034644

Version 2.0



Thomas Ridley QC Dept.
9:09 am, 29 Feb 2024

The food information supplied by Thomas Ridley Foodservice has been provided by the respective product manufacturer. Whilst we use reasonable endeavours to check this information and ensure its accuracy, we do not give any warranty (whether express or implied), guarantee or representation that it is true, accurate or complete in any respect.

As product information, ingredients, nutritional guides and dietary or allergy advice may change from time to time, we recommend that you always carefully read the product label prior to using or consuming any such products. You should not solely rely upon the information we provide and make your own assessment as to the suitability or otherwise of any given product.



09428

Glebe Farm Gluten Free Coconut Drink Barista 1 litre

Glebe Farm Gluten Free Coconut Drink Barista 1 Litre 6x

PRODUCT DESCRIPTION

Gluten Free Barista style Coconut Drink

Brand	Glebe Farm Foods Ltd
Manufacturer Product Code	40082
Effective Date	Feb 29, 2024
Product Type	Drink
Product Category	Juices and Cordials
Storage Type	Ambient
Erudus ID	5aace7ffa55a416689f40872b0034644
Specification Type	Drinks



Inner Component GTIN 5060084572508

Outer Case GTIN 5060084572584



INGREDIENTS

Ingredient Declaration

Water, Coconut m*lk 4% (Water, desiccated Coconut), SOYA (2.5%), Sugar, Acidity Regulator(Dipotassium Phosphate),Sea Salt, Stabiliser (Gellan Gum). Natural Flavouring

ALLERGENS

Product Contains:

Celery/Celeryiac	No	Mustard	No
Cereals Containing Gluten	No	Nuts (Tree)	No
Barley	No	Almond nuts	No
Oats	No	Brazil nuts	No
Rye	No	Cashew nuts	No
Wheat (including Spelt and Khorasan)	No	Hazelnuts	No
Crustacea	No	Macadamia (Queensland) nuts	No
Eggs	No	Pecan nuts	No
Fish	No	Pistachio nuts	No
Lupin	No	Walnuts	No
Milk	No	Peanuts	No
Molluscs	No	Sesame Seeds	No
		Soybeans	Yes
		Sulphur Dioxide and Sulphites	No

Additional Allergen Information

SOYA

SUPPLEMENTARY
INGREDIENT
INFORMATION

Palm Oil	No
Hydrogenated Vegetable Oil/Fat	No
GM Protein/DNA	No

ADDITIVES

Product Contains:

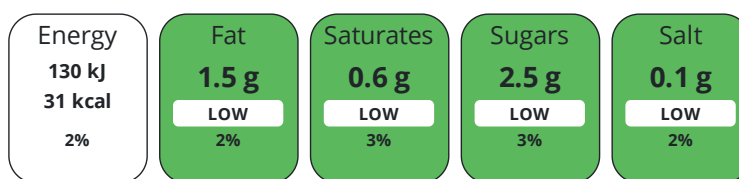
Artificial Antioxidants	No	Artificial Flavourings	No
Artificial Colours	No	Artificial Preservatives	No
Artificial Flavour Enhancers	No	Artificial Sweeteners	No

DIET
SUITABILITY

Vegan Diet	Suitable for	Vegetarian Diet	Suitable for
Halal Diet	No	Kosher Diet	Suitable for

NUTRITIONAL
INFORMATION

Each 100g/ml portion contains:



of your reference intake.

Typical values per 100g/ml : Energy 31kcal / 130kj

Nutrient	per 100g	RI per 100g
Energy (kJ)	130 kJ	2%
Energy (kcal)	31 kcal	2%
Fat	1.5 g	2%
of which Saturates	0.6 g	3%
Carbohydrate	2.8 g	1%
of which Sugars	2.5 g	3%
Fibre	< 0.5 g	
Protein	1.6 g	3%
Salt	0.1 g	2%

SUPPLEMENTARY
NUTRITIONAL
INFORMATION

HFSS (HIGH IN
FAT, SALT AND
SUGAR)
HANDLING &
STORAGE
INFORMATION

HFSS Status	No
--------------------	----

Directions For Use

Shake well before use

Storage Instructions

Keep in a cool dry place. Once opened keep refridgerated and use within 5 days

Shelf Life from Time of Production	365 Days	Exempt From Shelf Life Labelling	No
---	----------	---	----

ACCREDITATIONS/
CERTIFICATIONS/
ASSURANCE
SCHEMES



ORIGIN

Product Country of Origin/Place of Provenance	Italy
--	-------

PRODUCT CHARACTERISTICS	Standards Testing						
	Do you undertake trend analysis of microbiological results?	No	Is shelf life testing undertaken?		No		
CONFIGURATION	Case Configuration		Inner Pack Configuration				
	Total Quantity of Inner Components in Outer Case	6 Units					
PRODUCT WEIGHTS	Inner Component						
	Outer Case						
	Outer Case Gross Weight	6.5 kg					
	Outer Case Net Weight	6 kg					
PRODUCT DIMENSIONS	Inner Component						
	Inner Component Depth	75 mm					
	Inner Component Width	70 mm					
	Inner Component Height	205 mm					
	Outer Case						
	Outer Case Depth	220 mm					
	Outer Case Width	155 mm					
	Outer Case Height	215 mm					
PALLET INFORMATION	Quantity of Cases Per Pallet Layer	25 Cases	Pallet Height		1.5 MTR		
	Quantity of Layers Per Pallet	6 Layers	Pallet Gross Weight		1000 kg		
	Quantity of Cases Per Pallet	150 Cases					
PACKAGING	Inner Component Packaging						
	Type	Materials	Weight	Recycled Plastic %	Recyclable	Returnable	Composite
	Carton	Paper/Cardboard	50 g	- %			
	Outer Case Packaging						
	Type	Materials	Weight	Recycled Plastic %	Recyclable	Returnable	Composite
	Case	Paper/Cardboard	200 g	- %			
	OTHER INFORMATION CONTACT INFORMATION	Address					
		Glebe Farm Foods Ltd					
		Glebe Farm Foods Ltd					
		Kings Ripton					
Huntingdon							
Cambs							
PE28 2DT United Kingdom							
P: (Phone) 01487 773282							

The information on the [Erudus System](#) has been supplied by the manufacturers of the products and, whilst the owners of the Erudus System take steps to ensure the information is regularly updated, they give no warranty and no guarantee that the information is accurate. Product information and ingredients may change, please always read product labels carefully in addition to using the information provided by Erudus.

We do not accept liability for any inaccuracies or incorrect information contained on this site.
Please visit <http://www.erudus.com/terms-and-conditions> for full terms and conditions.