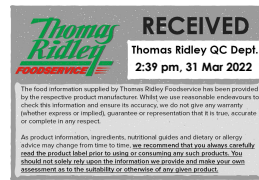


Supplier's Product Code :  
Product Added :  
Last Updated by Supplier :  
erudus id :

AVCI6  
18 November 2021  
31 March 2022  
0e7747d8dee74eabacc585096f36e745



The information on the Erudus System has been supplied by the manufacturers of the products and, whilst the owners of the Erudus System take steps to ensure the information is regularly updated, they give no warranty and no guarantee that the information is accurate. Product information and ingredients may change, please always read product labels carefully in addition to using the information provided by Erudus One.

We do not accept liability for any inaccuracies or incorrect information contained on this site. Please visit <http://www.erudus.com/terms-and-conditions> for full terms and conditions.

## Milk Choc Ices 70 ml 12 x 6

### Product Description:

Vanilla flavour ice cream covered in a milk chocolate flavour coating

### General Information

Food/Drink :	Food
Product Category :	Frozen
Generic Product Type :	Desserts

**Supplier's Product Code :**  
AVCI6  
**Supplier:** Suncream Dairies Ltd.  
Unit 7D Claymore  
Tame Valley Industrial Estate  
Tamworth  
Staffordshire  
B77 5DQ  
England  
P: 01827 282571

## OUTER PRODUCT

### Outer case Information

Outer Case GTIN :	Not specified.	Outer Case Length :	200 mm
Packaging Type Description :	Case	Outer Case Width :	304 mm
Total Quantity of Inner Units in Outer Case :	12 Units	Outer Case Height :	164 mm
Is Trade Item Splittable? :	No	Product Gross Weight :	3.49 kg
		Product Net Weight :	2.99 kg

### Pallet Information

Quantity of Cases Per Pallet Layer :	16 Cases	Pallet Height :	1.65 MTR
Quantity of Layers Per Pallet :	9 Layers	Pallet Gross Weight :	532.21 kg
Quantity of Cases Per Pallet :	144 Cases		

### Logistical Information

Shelf Life from Time of Production :	730 Days	Minimum Order Quantity :	144 Cases
Guaranteed Shelf Life on Delivery :	180 Days	Delivery Lead Time :	7 Days

### Waste Packaging Weight - Outer Case

Glass :	0.00 g	Aluminium :	0.00 g
Plastic :	0.00 g	Steel :	0.00 g
Percentage Recycled Plastic :	Not specified.	Other :	0.00 g
Paper/Board :	146.00 g		

### Waste Packaging Weight - Transport Packaging

Plastic :	168.00 g	Wood Total :	28,000.00 g
Paper/Board :	0.00 g	Is Pallet Returnable? :	-
Percentage Recycled Plastic :	Not specified.		

### Other Information

**Supplier Comments:**  
The outer case contains 12 x 6 packs of choc ices

## INNER PRODUCT

### Origin Information

Product Country of Origin/Place of Provenance : United Kingdom

Additional Origin Details :  
UK

### Inner Pack Information

Internal GTIN : Not specified.

Packaging Type Description : Carton

Variable Weight Consumer Item : No

Net Drained Weight : 4.000 kg

Inner Unit Length : 194 mm

Inner Unit Height : 48 mm

Inner Unit Width : 73 mm

Inner Product Weight : 420.00 ml

Inner Product Weight Units : ml

#### Weight/Volume :

Each carton contains 6 x 70 ml paper wrapped choc ices

### Handling Information

Directions For Use :  
Consume frozen

Storage Instructions :  
Always store frozen  
Store at -18°C or below

## Dietary Information

### Ingredients :

Partially reconstituted Skimmed MILK Powder concentrate, Milk Chocolate Flavour Coating (28%), (Coconut Oil, Sugar, Whey Powder (MILK), Fat Reduced Cocoa Powder, Emulsifier (SOYA Lecithin)), Glucose syrup, Coconut Oil, Sugar, Flavorings, Emulsifier (Mono- and Diglycerides of Fatty Acids), Stabilisers (Guar Gum, Sodium Alginate), Colour (Beta Carotene).

### Product contains:

GM Protein/DNA :	No
Celery/Celeriac (and products thereof) :	No
Lupin (and products thereof) :	No
Eggs (and products thereof) :	No
Fish (and products thereof) :	No
Soybeans (and products thereof) :	Yes
Milk (and products thereof) :	Yes
Mustard (and products thereof) :	No
Peanuts (and products thereof) :	No
Sesame Seeds (and products thereof) :	No
Crustacea (and products thereof) :	No
Molluscs (and products thereof) :	No
Nuts (and products thereof) :	May Contain
Almond nuts :	No
Hazelnuts :	May Contain
Walnuts :	No
Cashew nuts :	No
Pecan nuts :	No
Brazil nuts :	No
Pistachio nuts :	No
Macadamia nuts :	No
Queensland nuts :	No
Cereals Containing Gluten :	No
Wheat (and products thereof) :	No
Rye (and products thereof) :	No
Barley (and products thereof) :	No
Oats (and products thereof) :	No
Spelt (and products thereof) :	No
Kamut (and products thereof) :	No
Gluten content <20ppm :	Yes
Hydrogenated Vegetable Oil/Fat :	No
Palm Oil :	No
Sulphur Dioxide and Sulphites :	No
Sulphur Dioxide/Sulphites Concentration :	0

### Product contains :

Artificial Antioxidants :	No
Artificial Colours :	No
Artificial Flavourings :	No
Artificial Flavour Enhancers :	No
Artificial Preservatives :	No
Artificial Sweeteners :	No

### Product suitability:

Suitable for a Vegetarian Diet :	Yes
Suitable for a Vegan Diet :	No
Suitable for Sufferers of Lactose Intolerance :	No
Suitable for Coeliacs :	No
Approved for a Halal Diet :	No
Approved for a Kosher Diet :	No
HFSS (High in Fat, Salt and Sugar) :	-

### Allergen Statement :

The risk is classed as low as the line handling nuts is close to the choc ice line. but there is preventative measures such as the use of screens separating both lines, dedicated red cleaning equipment, different PPE, different access to the area etc, which will reduce the risk of contamination.

## Nutritional Information

Average Serving :	40.50 g or ml
Count per 100g :	2.5 Portions
Count Per Pack :	Not specified.
Energy per 100 G/ML :	1,268.00 kJ
Energy per 100 G/ML :	305.00 kcal
Fat per 100 G/ML :	20.5 g
- of which Saturates per 100 G/ML :	17.9 g
- of which Mono-unsaturates per 100 G/ML :	Not specified.
- of which Polyunsaturates per 100 G/ML :	Not specified.
Trans Fats per 100 G\ML :	Not specified.
Carbohydrate Per 100 G/ML :	26.4 g
- of which Sugars per 100 G/ML :	19.8 g
- of which Polyols per 100 G/ML :	Not specified.
- of which Starch per 100 G/ML :	Not specified.
Fibre per 100 G/ML :	0.7 g
Protein per 100 G/ML :	2.8 g
Salt per 100 G/ML :	0.26 g
Sodium per 100 G\ML :	Not specified.

Vitamin A per 100g :	Not specified.
Vitamin C per 100g :	Not specified.
Folate/Folic Acid per 100g :	Not specified.
Calcium per 100g :	Not specified.
Iron per 100g :	Not specified.
Zinc per 100g :	Not specified.
Cholesterol per 100 G/ML (UK/FR) :	Not specified.
Non Milk Extrinsic Sugars per 100gm :	Not specified.
Alcoholic Strength %Vol :	Not specified.
Fat Percentage in Dry Matter per 100g :	Not specified.

## Waste Packaging Weight - Inner Unit

Glass :	0.00 g
Plastic :	0.00 g
Percentage Recycled Plastic :	Not specified.
Paper/Board :	32.58 g

Aluminium :	0.00 g
Steel :	0.00 g
Other :	0.00 g

## Accreditations / Certifications / Assurance Schemes

BRCGS Certified Production :	Yes
Red Tractor :	No
Fairtrade :	No
Marine Stewardship Council Certified (MSC) :	No
Organic :	No
SALSA (Safe & Local Supplier Approval) :	No
British Lion Mark :	No
RSPCA Assured :	No
LEAF Marque (Linking Environment and Farming) :	No
Rainforest Alliance :	No
Food for Life Supplier Scheme :	No
Quality Meat Scotland :	No
Farm Assured Welsh Livestock :	No
Northern Ireland Beef & Lamb Farm Quality Assurance Scheme :	No
Quality Standard Mark (Beef/Lamb) :	No
Roundtable of Sustainable Palm Oil (RSPO) :	No
School Approved (The Requirement for School Food Regulation 2014) :	No
IFS Food Standard :	No
Best Aquaculture Practices (BAP) Certification :	No
ISO 14001 (Environmental System) :	No
FSSC 22000 :	No

<b>Other Accreditation :</b>	N/A
Intra Stat/Taric Code :	Not specified.
Commodity Code :	Not specified.
Identification/Health Marks :	Not specified.

## Standards Testing

Do you undertake trend analysis of  
microbiological results? : No

Is shelf life testing undertaken? : No

## Microbiological Standards

Not available.

## Analytical Standards

Not available.