

Changed Jan 17, 2025 12:47

Reviewed Jan 17, 2025 12:47

Erudus ID af95e28e5db9473b8c3bfb3059e89300

Version 2.0

09446

CC SLICED SALAMI NAPOLI X 250G SRP

Dry-cred Pork Sausage With Pepper 8x250g

PRODUCT DESCRIPTION

sliced salami Napoli

Brand	Charcuti®
Manufacturer Product Code	SAL211
Manufacturer Version	2.11
Number	
Product Type	Food
Product Category	Deli Meats & Processed Meats
Storage Type	Chilled
Erudus ID	af95e28e5db9473b8c3bfb3059e89300
Specification Type	Meat
Inner Component GTIN	5018095189499
Outer Case GTIN	5018095984599



INGREDIENTS

Ingredient Declaration
Pork, Salt, Dextrose, Natural Flavouring, Spice (0.08%) (Garlic, Whole and Ground Black Pepper (0.013%)), Sucrose, Antioxidant: Sodium Ascorbate, Smoke Flavouring, Preservative: Sodium Nitrite, Potassium Nitrate.

Ingredient Statements
Made with 122g raw meat per 100g finished product.

ALLERGENS

<i>Product Contains:</i>			
Celery/Celeriac	No	Mustard	No
Cereals Containing Gluten	No	Nuts (Tree)	No
Barley	No	Almond nuts	No
Oats	No	Brazil nuts	No
Rye	No	Cashew nuts	No
Wheat (including Spelt and Khorasan)	No	Hazelnuts	No
Crustacea	No	Macadamia (Queensland) nuts	No
Eggs	No	Pecan nuts	No
Fish	No	Pistachio nuts	No
Lupin	No	Walnuts	No
Milk	May Contain	Peanuts	No
Molluscs	No	Sesame Seeds	No
		Soybeans	No
		Sulphur Dioxide and Sulphites	No
<i>Risk Source:</i>			
Milk (Risk Source)	Line		

RECEIVED

Thomas Ridley QC Dept.

11:35, 25 Feb 2025

The food information supplied by Thomas Ridley Foodservice has been provided by the respective product manufacturer. Whilst we use reasonable endeavours to check this information and ensure its accuracy, we do not give any warranty (whether express or implied), guarantee or representation that it is true, accurate or complete in any respect.

As product information, ingredients, nutritional guides and dietary or allergy advice may change from time to time, we recommend that you always carefully read the product label prior to using or consuming any such products. You should not solely rely upon the information we provide and make your own assessment as to the suitability or otherwise of any given product.

SUPPLEMENTARY
INGREDIENT
INFORMATION

ADDITIVES

DIET
SUITABILITY

NUTRITIONAL
INFORMATION

Additional Allergen Information

may contain milk

Palm Oil	No
Hydrogenated Vegetable Oil/Fat	No
GM Protein/DNA	No

Product Contains:

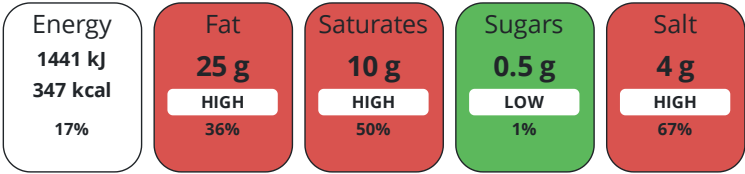
Artificial Antioxidants	Yes
Artificial Colours	No
Artificial Flavour Enhancers	No

Artificial Flavourings	No
Artificial Preservatives	Yes
Artificial Sweeteners	No

Halal Diet	No
------------	----

Kosher Diet	No
-------------	----

Each 100g/ml portion contains:



of your reference intake.

Typical values per 100g/ml : Energy 347kcal / 1441kJ

Nutrient	per 100g	RI per 100g	per 125g serving	RI per 125g serving
Energy (kJ)	1441 kJ	17%	1801.3 kJ	21%
Energy (kcal)	347 kcal	17%	433.8 kcal	22%
Fat	25 g	36%	31.3 g	45%
of which Saturates	10 g	50%	12.5 g	63%
Carbohydrate	0.5 g	0%	0.6 g	0%
of which Sugars	0.5 g	1%	0.6 g	1%
Protein	29 g	58%	36.3 g	73%
Salt	4 g	67%	5 g	83%

Serving Size	125 g
Number of Servings	2 Servings

Source of Nutritional Information	Manufacturers analysis
-----------------------------------	------------------------

SUPPLEMENTARY
NUTRITIONAL
INFORMATION

HFSS (HIGH IN
FAT, SALT AND
SUGAR)
HANDLING &
STORAGE
INFORMATION

HFSS Status	Not Applicable (out of scope, exempt)
-------------	---------------------------------------

Directions For Use

RTE

Storage Instructions

KEEP CHILLED below 5°C

Storage Instructions After Opening

KEEP CHILLED below 5°C

Shelf Life from Time of Production	60 Days
Shelf Life From Opening	3 Days

ACCREDITATIONS/
CERTIFICATIONS/
ASSURANCE
SCHEMES
ORIGIN

BRCGS Certified		BRCGS Food Safety			
Other Accreditation					
Product Country of Origin/Place of Provenance	Italy				

PRODUCT
CHARACTERISTICS

Standards Testing						
Do you undertake trend analysis of microbiological results?		No	Is shelf life testing undertaken?			No
Microbiological Standards						
Organism	Description	Frequency	Target	Maximum	Sample (g or ml)	
E. Coli (cfu/g or ml)	ISO16649-2:2001 (β- Glucorinidasi+)	Quarterly	<100	1000	250	
Listeria Monocytogenes (cfu/g or ml)	ISO 11290-2:2005	Quarterly	<10	100	250	
Staphylococcus Aureus (cfu/g or ml)	UNI EN ISO6888-1:2004	Quarterly	<1000	10000	250	
Salmonella (cfu/g or ml)	ISO 6579:2002 COR 1:2004	Quarterly	=0	0	25	

ORGANOLEPTICS

Appearance
Typical mosaic structure red and white

Aroma
Typically seasoned salami napoli fragrance

Taste
Salty and sweet without aftertaste

Texture
Stiff and compact

CONFIGURATION

Case Configuration	Inner Pack Configuration
Total Quantity of Inner Components in Outer Case	8 Units
Is the Outer Case Splittable?	No

PRODUCT
WEIGHTS

Inner Component	
Variable Weight Consumer Item	No
Inner Component Weight	250 g
e mark	Yes
Outer Case	
Outer Case Gross Weight	2.31 kg
Outer Case Net Weight	2 kg

PRODUCT
DIMENSIONS

Inner Component	
Inner Component Depth	133 mm
Inner Component Width	240 mm
Inner Component Height	23 mm
Outer Case	
Outer Case Depth	140 mm
Outer Case Width	240 mm
Outer Case Height	250 mm

PALLET
INFORMATION

Quantity of Cases Per Pallet Layer	24 Cases	Pallet Type	Euro Pallet
Quantity of Layers Per Pallet	6 Layers	Pallet Height	1.8 MTR
Quantity of Cases Per Pallet	144 Cases		

PACKAGING

Inner Component Packaging

Type	Materials	Weight	Recycled Plastic %	Recyclable	Returnable	Composite
Tray	Plastic	18 g	0 %	No	No	No

Outer Case Packaging

Type	Materials	Weight	Recycled Plastic %	Recyclable	Returnable	Composite
Case	Paper/Cardboard / Cardboard	167 g	- %	Yes	No	No

MARKETING INFORMATION

Marketing Description
perfect for sharing boards, paninis and pizzas

OTHER INFORMATION

Commodity Code 1601009190

CONTACT INFORMATION

Manufacturer Comments

N/A

Address

Leathams Ltd
Unit 10-12 The Circle
Queen Elizabeth Street
London
SE1 2JE
United Kingdom

Technical Contact

Technical Team
technical.queries@leathams.co.uk

P: (Phone) +44 207 635 4008

P: (Phone) 020 7635 4008

Complaints Contact

Technical Team
technical.queries@leathams.co.uk

P: (Phone) +44 207 635 4008

The information on the [Erudus System](#) has been supplied by the manufacturers of the products and, whilst the owners of the Erudus System take steps to ensure the information is regularly updated, they give no warranty and no guarantee that the information is accurate. Product information and ingredients may change, please always read product labels carefully in addition to using the information provided by Erudus.

We do not accept liability for any inaccuracies or incorrect information contained on this site.
Please visit <http://www.erudus.com/terms-and-conditions> for full terms and conditions.