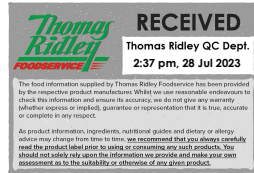


Supplier's Product Code : 32404  
 Product Added : 28 June 2021  
 Last Updated by Supplier : 14 January 2022  
 erudus id : c971539289b84e4d8632bc8db5c8e139



The information on the Erudus System has been supplied by the manufacturers of the products and, whilst the owners of the Erudus System take steps to ensure the information is regularly updated, they give no warranty and no guarantee that the information is accurate. Product information and ingredients may change, please always read product labels carefully in addition to using the information provided by Erudus One.

We do not accept liability for any inaccuracies or incorrect information contained on this site. Please visit <http://www.erudus.com/terms-and-conditions> for full terms and conditions.

## McVitie's Milk Chocolate Digestives - To Go (24 x 33.3g)

### Product Description:

Wheatmeal Biscuits covered in Milk Chocolate.

### General Information

Food/Drink :	Food
Product Category :	Ambient
Generic Product Type :	Biscuits & Wafers

**Supplier's Product Code :**  
32404  
**Supplier:** United Biscuits  
 pladis, Building 3, Chiswick Park  
 566 Chiswick High Road  
 Chiswick  
 London  
 W4 5YA  
 England  
 P: ...

### OUTER PRODUCT

#### Outer case Information

Outer Case GTIN :	5000168193182	Outer Case Length :	278 mm
Packaging Type Description :	Case	Outer Case Width :	158 mm
Total Quantity of Inner Units in Outer Case :	24 Units	Outer Case Height :	79 mm
Is Trade Item Splittable? :	-	Product Gross Weight :	895.00 kg
		Product Net Weight :	799.00 kg

#### Pallet Information

Quantity of Cases Per Pallet Layer :	23 Cases	Pallet Height :	1.24 MTR
Quantity of Layers Per Pallet :	9 Layers	Pallet Gross Weight :	215.24 kg
Quantity of Cases Per Pallet :	207 Cases		

#### Logistical Information

Shelf Life from Time of Production :	252 Days	Minimum Order Quantity :	Not specified.
Guaranteed Shelf Life on Delivery :	168 Days	Delivery Lead Time :	Not specified.

#### Waste Packaging Weight - Outer Case

Glass :	0.00 g	Aluminium :	0.00 g
Plastic :	19.92 g	Steel :	0.00 g
Percentage Recycled Plastic :	Not specified.	Other :	0.00 g
Paper/Board :	90.00 g		

#### Waste Packaging Weight - Transport Packaging

Plastic :	Not specified.	Wood Total :	Not specified.
Paper/Board :	Not specified.	Is Pallet Returnable? :	-
Percentage Recycled Plastic :	Not specified.		

#### Other Information

<b>Supplier Comments :</b>	Not specified.
----------------------------	----------------

## INNER PRODUCT

### Origin Information

Product Country of Origin/Place of Provenance : United Kingdom

**Additional Origin Details :**  
Not specified.

### Inner Pack Information

Internal GTIN : 5000168193182

Packaging Type Description : Polypropylene Film

Variable Weight Consumer Item : No

Net Drained Weight : Not specified.

Inner Unit Length : 100 mm

Inner Unit Height : 17 mm

Inner Unit Width : 80 mm

Inner Product Weight : Not specified.

Inner Product Weight Units : g

**Weight/Volume :**  
33.3g e

### Handling Information

**Directions For Use :**  
Ready to eat

**Storage Instructions :**  
Store in a cool, dry place. Once opened store in an airtight container

## Dietary Information

### Ingredients :

Flour (39%) (WHEAT Flour, Calcium, Iron, Niacin, Thiamin), MILK Chocolate (30%) [Sugar, Cocoa Butter, Cocoa Mass, Dried Skimmed MILK, Dried Whey (MILK), Butter Oil (MILK), Vegetable Fats (Palm, Shea), Emulsifiers (SOYA Lecithin, E476), Natural Flavouring], Vegetable Oil (Palm), Wholemeal WHEAT Flour (9%), Sugar, Glucose-Fructose Syrup, Raising Agents (Sodium Bicarbonate, Malic Acid, Ammonium Bicarbonate), Salt.

### Product contains:

GM Protein/DNA :	No
Celery/Celeriac (and products thereof) :	No
Lupin (and products thereof) :	No
Eggs (and products thereof) :	No
Fish (and products thereof) :	No
Soybeans (and products thereof) :	Yes
Milk (and products thereof) :	Yes
Mustard (and products thereof) :	No
Peanuts (and products thereof) :	No
Sesame Seeds (and products thereof) :	No
Crustacea (and products thereof) :	No
Molluscs (and products thereof) :	No
Nuts (and products thereof) :	No
Almond nuts :	No
Hazelnuts :	No
Walnuts :	No
Cashew nuts :	No
Pecan nuts :	No
Brazil nuts :	No
Pistachio nuts :	No
Macadamia nuts :	No
Queensland nuts :	No
Cereals Containing Gluten :	Yes
Wheat (and products thereof) :	Yes
Rye (and products thereof) :	May Contain
Barley (and products thereof) :	May Contain
Oats (and products thereof) :	May Contain
Spelt (and products thereof) :	No
Kamut (and products thereof) :	No
Gluten content <20ppm :	No
Hydrogenated Vegetable Oil/Fat :	No
Palm Oil :	Yes
Sulphur Dioxide and Sulphites :	No
Sulphur Dioxide/Sulphites Concentration :	-

### Product contains :

Artificial Antioxidants :	-
Artificial Colours :	No
Artificial Flavourings :	No
Artificial Flavour Enhancers :	-
Artificial Preservatives :	-
Artificial Sweeteners :	-

### Product suitability:

Suitable for a Vegetarian Diet :	Yes
Suitable for a Vegan Diet :	No
Suitable for Sufferers of Lactose Intolerance :	No
Suitable for Coeliacs :	No
Approved for a Halal Diet :	No
Approved for a Kosher Diet :	No
HFSS (High in Fat, Salt and Sugar) :	-

### Allergen Statement :

Contains: Milk, Soya, Gluten.

## Nutritional Information

Average Serving :	16.70 g or ml
Count per 100g :	Not specified.
Count Per Pack :	Not specified.
Energy per 100 G/ML :	2,078.00 kJ
Energy per 100 G/ML :	496.00 kcal
Fat per 100 G/ML :	23.6 g
- of which Saturates per 100 G/ML :	12.4 g
- of which Mono-unsaturates per 100 G/ML :	Not specified.
- of which Polyunsaturates per 100 G/ML :	Not specified.
Trans Fats per 100 G\ML :	Not specified.
Carbohydrate Per 100 G/ML :	62.5 g
- of which Sugars per 100 G/ML :	28.5 g
- of which Polyols per 100 G/ML :	Not specified.
- of which Starch per 100 G/ML :	Not specified.
Fibre per 100 G/ML :	3 g
Protein per 100 G/ML :	6.7 g
Salt per 100 G/ML :	0.94 g
Sodium per 100 G\ML :	Not specified.

Vitamin A per 100g :	Not specified.
Vitamin C per 100g :	Not specified.
Folate/Folic Acid per 100g :	Not specified.
Calcium per 100g :	Not specified.
Iron per 100g :	Not specified.
Zinc per 100g :	Not specified.
Cholesterol per 100 G/ML (UK/FR) :	Not specified.
Non Milk Extrinsic Sugars per 100gm :	Not specified.
Alcoholic Strength %Vol :	Not specified.
Fat Percentage in Dry Matter per 100g :	Not specified.

## Waste Packaging Weight - Inner Unit

Glass :	0.00 g
Plastic :	0.83 g
Percentage Recycled Plastic :	Not specified.
Paper/Board :	0.00 g

Aluminium :	0.00 g
Steel :	0.00 g
Other :	0.00 g

## Accreditations / Certifications / Assurance Schemes

BRCGS Certified Production :	Yes
Red Tractor :	No
Fairtrade :	No
Marine Stewardship Council Certified (MSC) :	No
Organic :	No
SALSA (Safe & Local Supplier Approval) :	No
British Lion Mark :	No
RSPCA Assured :	No
LEAF Marque (Linking Environment and Farming) :	No
Rainforest Alliance :	No
Food for Life Supplier Scheme :	No
Quality Meat Scotland :	No
Farm Assured Welsh Livestock :	No
Northern Ireland Beef & Lamb Farm Quality Assurance Scheme :	No
Quality Standard Mark (Beef/Lamb) :	No
Roundtable of Sustainable Palm Oil (RSPO) :	Yes
School Approved (The Requirement for School Food Regulation 2014) :	No
IFS Food Standard :	No
Best Aquaculture Practices (BAP) Certification :	No
ISO 14001 (Environmental System) :	No
FSSC 22000 :	No

<b>Other Accreditation :</b>	Not specified.
Intra Stat/Taric Code :	Not specified.
Commodity Code :	Not specified.
Identification/Health Marks :	Not specified.

## Standards Testing

Do you undertake trend analysis of  
microbiological results? : No

Is shelf life testing undertaken? : No

## Microbiological Standards

Not available.

## Analytical Standards

Not available.