

09599

# Harrisons Barbeque Sauce 10g Sachet

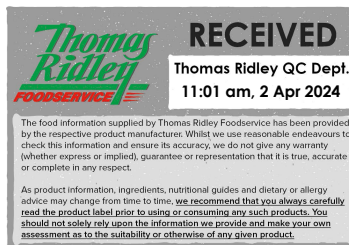
Barbeque Sauce 200x10g

## PRODUCT DESCRIPTION

PHYSICAL APPEARANCE Smooth dark red sauce COLOUR Dark red FLAVOUR Smoky tomato TEXTURE

Smooth AROMA Acidic with smoky aroma

Brand	B I Ltd
Manufacturer Product Code	BI-0019
Product Type	Food
Product Category	Sauces
Storage Type	Ambient
Erudus ID	c3a5ebac6d5848f9a3c8112ead96172b
Specification Type	Legacy



Outer Case GTIN 5013923000199



## INGREDIENTS

### Ingredient Declaration

#### INGREDIENT LIST (In descending order by weight)

Water, Sugar, Spirit Vinegar, Tomato Paste, Thickener (Modified Maize Starch), Salt, Flavouring , Onion Powder, Garlic Powder ,Caramelised sugar, Preservative( Potassium Sorbate), White Pepper

## ALLERGENS

Product Contains:

<b>Celery/Celeriac</b>	No	<b>Mustard</b>	No
<b>Cereals Containing Gluten</b>	No	<b>Nuts (Tree)</b>	No
<b>Barley</b>	No	<b>Almond nuts</b>	No
<b>Oats</b>	No	<b>Brazil nuts</b>	No
<b>Rye</b>	No	<b>Cashew nuts</b>	No
<b>Wheat (including Spelt and Khorasan)</b>	No	<b>Hazelnuts</b>	No
<b>Crustacea</b>	No	<b>Macadamia (Queensland) nuts</b>	No
<b>Eggs</b>	No	<b>Pecan nuts</b>	No
<b>Fish</b>	No	<b>Pistachio nuts</b>	No
<b>Lupin</b>	No	<b>Walnuts</b>	No
<b>Milk</b>	No	<b>Peanuts</b>	No
<b>Molluscs</b>	No	<b>Sesame Seeds</b>	No
		<b>Soybeans</b>	No
		<b>Sulphur Dioxide and Sulphites</b>	No

## SUPPLEMENTARY INGREDIENT INFORMATION

<b>Palm Oil</b>	No
<b>Hydrogenated Vegetable Oil/Fat</b>	No
<b>GM Protein/DNA</b>	No

ADDITIVES

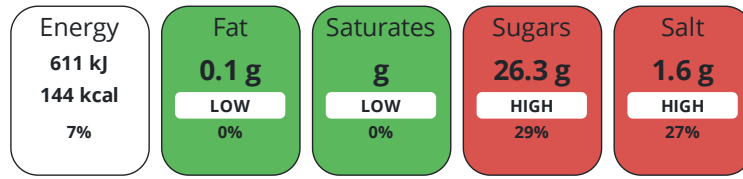
Product Contains:

<b>Artificial Antioxidants</b>	No	<b>Artificial Flavourings</b>	No
<b>Artificial Colours</b>	No	<b>Artificial Preservatives</b>	Yes
<b>Artificial Flavour Enhancers</b>	No	<b>Artificial Sweeteners</b>	No
<b>Suitable for Coeliacs</b>	Yes	<b>Halal Diet</b>	No
<b>Kosher Diet</b>	No	<b>Vegetarian Diet</b>	Suitable for
<b>Vegan Diet</b>	Suitable for		

DIET SUITABILITY

NUTRITIONAL INFORMATION

Each 100g/ml portion contains:



of your reference intake.

Typical values per 100g/ml : Energy 144kcal / 611kJ

Nutrient	per 100g/ml	RI per 100g/ml
<b>Energy (kJ)</b>	611 kJ	7%
<b>Energy (kcal)</b>	144 kcal	7%
<b>Fat</b>	0.1 g	0%
of which Saturates	0 g	0%
<b>Carbohydrate</b>	33.2 g	13%
of which Sugars	26.3 g	29%
<b>Protein</b>	0.8 g	2%
<b>Salt</b>	1.6 g	27%

SUPPLEMENTARY NUTRITIONAL INFORMATION

HANDLING & STORAGE INFORMATION

**Directions For Use**

Ambient.

**Storage Instructions**

STORAGE TEMP. <25°C Store in a dry place away from direct sunlight and other heat sources

**Shelf Life from Time of Production** 365 Days

**BRCGS Certified**

**Product Country of Origin/Place of Provenance** United Kingdom

ACCREDITATIONS/ CERTIFICATIONS/ ASSURANCE SCHEMES ORIGIN

PRODUCT CHARACTERISTICS

Standards Testing

<b>Do you undertake trend analysis of microbiological results?</b>	Yes	<b>Is shelf life testing undertaken?</b>	Yes
--	-----	--	-----

Microbiological Standards

Organism	Description	Frequency	Target	Maximum	Sample (g or ml)
Coliforms (cfu/g or ml)		Every Batch	<10	500	-
E. Coli (cfu/g or ml)		Every Batch	<10	10	-

Organism	Description	Frequency	Target	Maximum	Sample (g or ml)
Staphylococcus Aureus (cfu/g or ml)		Every Batch	<10	100	-
Total Viable Count (TVC) (cfu/g or ml)		Every Batch	<10	10000	-
Yeast (cfu/g or ml)		Every Batch	<10	500	-
Moulds (cfu/g or ml)		Every Batch	<10	500	-

CONFIGURATION

Case Configuration Inner Pack Configuration

**Total Quantity of Inner Components in** 200 Units

**Outer Case**

**Is the Outer Case Splittable?** No

PRODUCT WEIGHTS

Inner Component

**Variable Weight Consumer Item** No

**Inner Component Weight** 10 g

**Weight/Volume**

10g

Outer Case

**Outer Case Gross Weight** 2 kg

**Outer Case Net Weight** 2.3 kg

PRODUCT DIMENSIONS

Inner Component

**Inner Component Depth** 90 mm

**Inner Component Width** 45 mm

**Inner Component Height** 0 mm

Outer Case

**Outer Case Depth** 235 mm

**Outer Case Width** 182 mm

**Outer Case Height** 101 mm

PALLET INFORMATION

**Quantity of Cases Per Pallet Layer** 24 Cases **Pallet Height** 0.15 MTR

**Quantity of Layers Per Pallet** 10 Layers **Pallet Gross Weight** 577 kg

**Quantity of Cases Per Pallet** 240 Cases

PACKAGING

Inner Component Packaging

Type	Materials	Weight	Recycled Plastic %	Recyclable	Returnable	Composite
Sachet	Plastic	0.07 g	- %			

Outer Case Packaging

Type	Materials	Weight	Recycled Plastic %	Recyclable	Returnable	Composite
Case	Paper/Cardboard	0.13 g	- %			

Transport Packaging

Type	Materials	Weight	Recycled Plastic %	Recyclable	Returnable	Composite
Other	Plastic	0.46 g	0.46 %			
Other	Paper/Cardboard	0.38 g	- %			
Other	Wood	25 g	- %			

OTHER INFORMATION

**Commodity Code** 21032000

CONTACT  
INFORMATION

Address

B I Ltd  
21-22 , Kernan Drive  
Loughborough  
Leicestershire  
LE11 5JF  
England

P: (Phone) 01509-631650

Commercial Contact

Priyan Dhutia  
Operations Manager  
priyan@bilimited.com

P: (Phone) 01509631650

The information on the [Erudus System](#) has been supplied by the manufacturers of the products and, whilst the owners of the Erudus System take steps to ensure the information is regularly updated, they give no warranty and no guarantee that the information is accurate. Product information and ingredients may change, please always read product labels carefully in addition to using the information provided by Erudus.

We do not accept liability for any inaccuracies or incorrect information contained on this site.  
Please visit <http://www.erudus.com/terms-and-conditions> for full terms and conditions.