

Changed Apr 05, 2024 07:50

Reviewed Apr 05, 2024 07:50

Erudus ID d035eb89042542229077b82789a0bc95

Version 3.0

09610

HP sauce Top Down - 450G

Hp Sauce 12x450g

PRODUCT DESCRIPTION

HP Sauce - A condiment with hot and cold savoury food,

Brand	H.J. Heinz
Manufacturer Product Code	71180704
Product Type	Food
Product Category	Condiments
Storage Type	Ambient
Erudus ID	d035eb89042542229077b82789a0bc95
Specification Type	Generic
Inner Component GTIN	5000111046244
Outer Case GTIN	5000111614061



INGREDIENTS

Ingredient Declaration

Tomatoes, malt vinegar (from BARLEY), molasses, glucose-fructose syrup, spirit vinegar, sugar, dates, modified cornflour, RYE flour, salt, spices, flavourings, tamarind.

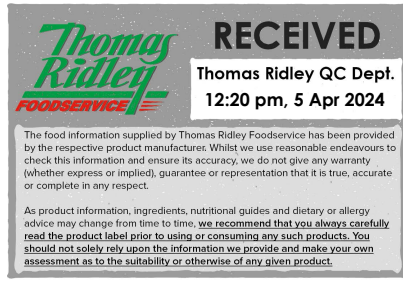
ALLERGENS

Product Contains:

Celery/Celeriac	No	Mustard	No
Cereals Containing Gluten	Yes	Nuts (Tree)	No
Barley	Yes	Almond nuts	No
Oats	No	Brazil nuts	No
Rye	Yes	Cashew nuts	No
Wheat (including Spelt and Khorasan)	No	Hazelnuts	No
Crustacea	No	Macadamia (Queensland) nuts	No
Eggs	No	Pecan nuts	No
Fish	No	Pistachio nuts	No
Lupin	No	Walnuts	No
Milk	No	Peanuts	No
Molluscs	No	Sesame Seeds	No
		Soybeans	No
		Sulphur Dioxide and Sulphites	No

SUPPLEMENTARY INGREDIENT INFORMATION

Palm Oil	No
Hydrogenated Vegetable Oil/Fat	No
GM Protein/DNA	No



ADDITIVES

Product Contains:

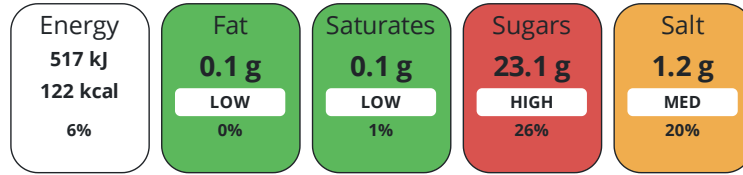
Artificial Antioxidants	No	Artificial Flavourings	No
Artificial Colours	No	Artificial Preservatives	No
Artificial Flavour Enhancers	No	Artificial Sweeteners	No

DIET SUITABILITY

Vegan Diet	Suitable for	Vegetarian Diet	Suitable for
Halal Diet	Suitable for	Kosher Diet	Suitable for

NUTRITIONAL INFORMATION

Each 100g/ml portion contains:



of your reference intake.

Typical values per 100g/ml : Energy 122kcal / 517kJ

Nutrient	per 100g	RI per 100g
Energy (kJ)	517 kJ	6%
Energy (kcal)	122 kcal	6%
Fat	0.1 g	0%
of which Saturates	< 0.1 g	1%
Carbohydrate	28.3 g	11%
of which Sugars	23.1 g	26%
Protein	0.9 g	2%
Salt	1.2 g	20%

SUPPLEMENTARY NUTRITIONAL INFORMATION

HANDLING & STORAGE INFORMATION

Directions For Use

Ready to use condiment

Storage Instructions

Once opened keep refrigerated and use within 8 weeks

Shelf Life from Time of Production	547 Days	Exempt From Shelf Life Labelling	No
---	----------	---	----

ACCREDITATIONS/ CERTIFICATIONS/ ASSURANCE SCHEMES ORIGIN

BRCGS Certified

Product Country of Origin/Place of Netherlands (the)

Provenance

Additional Origin Details

N/A

PRODUCT CHARACTERISTICS

Standards Testing

Do you undertake trend analysis of microbiological results?	No	Is shelf life testing undertaken?	No
--	----	--	----

CONFIGURATION

Case Configuration Inner Pack Configuration

Total Quantity of Inner Components in 12 Units

Outer Case

Is the Outer Case Splittable? No

PRODUCT WEIGHTS

Inner Component	
Variable Weight Consumer Item	No
Inner Component Weight	450 g
Outer Case	
Outer Case Gross Weight	6.02 kg
Outer Case Net Weight	5.4 kg

PRODUCT DIMENSIONS

Inner Component	
Inner Component Depth	56 mm
Inner Component Width	63 mm
Inner Component Height	197 mm
Outer Case	
Outer Case Depth	235 mm
Outer Case Width	195 mm
Outer Case Height	209 mm

PALLET INFORMATION

Quantity of Cases Per Pallet Layer	1 Cases	Pallet Height	1.15 MTR
Quantity of Layers Per Pallet	25 Layers		
Quantity of Cases Per Pallet	150 Cases		

OTHER INFORMATION CONTACT INFORMATION

Address
H.J. Heinz
The Shard
32 London Bridge Street
London
SE1 9SG
England

P: (Phone) 02037 650500

The information on the [Erudus System](#) has been supplied by the manufacturers of the products and, whilst the owners of the Erudus System take steps to ensure the information is regularly updated, they give no warranty and no guarantee that the information is accurate. Product information and ingredients may change, please always read product labels carefully in addition to using the information provided by Erudus.

We do not accept liability for any inaccuracies or incorrect information contained on this site.
Please visit <http://www.erudus.com/terms-and-conditions> for full terms and conditions.