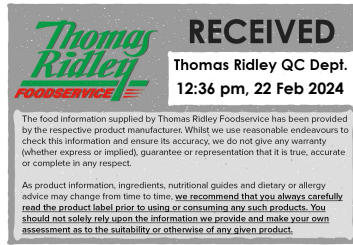


Changed Feb 21, 2024 00:00

Reviewed Feb 20, 2024 10:27

Erudus ID ec2ad332902b4cf9b01c5bd124ebef25

Version 2.0



09613

FB Steak & Kidney Suet Puddings (8 x 390g approx)

Steak & Kidney Suet Pudding

PRODUCT DESCRIPTION

Frozen, Steamed Steak & Kidney Puddings made with a Suet Pastry.

Brand	Wrights Food Group
Manufacturer Product Code	2219
Effective Date	Feb 20, 2024
Product Type	Food
Product Category	Pies, Sausage Rolls, Savouries
Storage Type	Frozen
Erudus ID	ec2ad332902b4cf9b01c5bd124ebef25
Specification Type	Bakery Products
Outer Case GTIN	05018833022194



INGREDIENTS

Ingredient Declaration

Water, **WHEAT** Flour (contains Calcium Carbonate, Iron, Niacin, Thiamin), Beef (18%), Kidney (8%), Beef Suet, Vegetable Fats & Oils [Rapeseed, Palm], Modified Maize Starch, Salt, Raising Agents (E450, E500), Caramelised Sugar, Malt Extract (**BARLEY**), White Pepper.

ALLERGENS

Product Contains:

Celery/Celeriac	No	Mustard	No
Cereals Containing Gluten	Yes	Nuts (Tree)	No
Barley	Yes	Almond nuts	No
Oats	No	Brazil nuts	No
Rye	No	Cashew nuts	No
Wheat (including Spelt and Khorasan)	Yes	Hazelnuts	No
Crustacea	No	Macadamia (Queensland) nuts	No
Eggs	No	Pecan nuts	No
Fish	No	Pistachio nuts	No
Lupin	No	Walnuts	No
Milk	No	Peanuts	No
Molluscs	No	Sesame Seeds	No
		Soybeans	No
		Sulphur Dioxide and Sulphites	No

Additional Allergen Information

Allergens: For allergens (including cereals containing gluten) see ingredients in UPPER CASE.

SUPPLEMENTARY INGREDIENT INFORMATION

Palm Oil	Yes
Hydrogenated Vegetable Oil/Fat	No
GM Protein/DNA	No

ADDITIVES

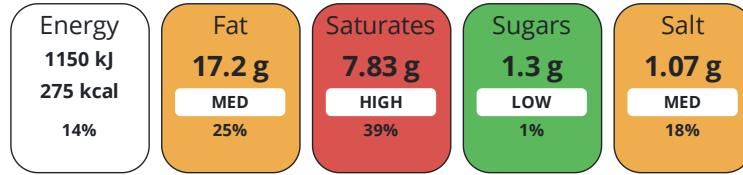
Product Contains:

Artificial Antioxidants	No	Artificial Flavourings	No
Artificial Colours	No	Artificial Preservatives	No
Artificial Flavour Enhancers	No	Artificial Sweeteners	No
Vegan Diet	No	Vegetarian Diet	No
Halal Diet	No	Kosher Diet	No

DIET SUITABILITY

NUTRITIONAL INFORMATION

Each 100g/ml portion contains:



of your reference intake.

Typical values per 100g/ml : Energy 275kcal / 1150kJ

Nutrient	per 100g	RI per 100g	per 390g serving	RI per 390g serving
Energy (kJ)	1150 kJ	14%	4485 kJ	53%
Energy (kcal)	275 kcal	14%	1072.5 kcal	54%
Fat	17.2 g	25%	67.1 g	96%
of which Saturates	7.83 g	39%	30.5 g	153%
Carbohydrate	21.7 g	8%	84.6 g	33%
of which Sugars	1.3 g	1%	5.1 g	6%
Fibre	1.9 g		7.4 g	
Protein	7.4 g	15%	28.9 g	58%
Salt	1.07 g	18%	4.2 g	70%
Serving Size	390 g			

SUPPLEMENTARY NUTRITIONAL INFORMATION

HANDLING & STORAGE INFORMATION

Directions For Use

Reheating Guidelines: Microwave from Frozen (Based on a 1000 watt microwave) 1. Place pudding in microwave upside down in its pot. Heat on full power for 3 minutes 2.Turn pudding upright and heat again for 3-4 minutes 3. Rest for 2 minutes, decant from pot and serve. Ensure product is piping hot throughout before serving.

Storage Instructions

Store below -18°C. Once defrosted DO NOT re-freeze. Handle with care.

Shelf Life from Time of Production	547 Days	Exempt From Shelf Life Labelling	No
---	----------	---	----

ACCREDITATIONS/ CERTIFICATIONS/ ASSURANCE SCHEMES



Other Accreditation

.

ORIGIN	Product Country of Origin/Place of Provenance United Kingdom						
PRODUCT CHARACTERISTICS	Additional Origin Details						
	Using Beef from ROI and UK.						
	Standards Testing						
	Do you undertake trend analysis of microbiological results?	No	Is shelf life testing undertaken?		No		
	Microbiological Standards						
	Organism	Description	Frequency	Target	Maximum	Sample (g or ml)	
	Bacillus Cereus (cfu/g or ml)		Annually	<50	100	100	
	E. Coli (cfu/g or ml)		Annually	<10	100	100	
	Enterobacteriaceae (cfu/g or ml)		Annually	<10	100	100	
	Listeria Monocytogenes (cfu/g or ml)	absent in 25g	Annually	<0	0	25	
Staphylococcus Aureus (cfu/g or ml)		Annually	<50	100	100		
Total Viable Count (TVC) (cfu/g or ml)		Annually	<100	5000	100		
Salmonella (cfu/g or ml)	absent in 25g	Annually	<0	0	25		
Yeast (cfu/g or ml)		Annually	<1000	10000	100		
Moulds (cfu/g or ml)		Annually	<20	100	100		
CONFIGURATION	Case Configuration		Inner Pack Configuration				
	Total Quantity of Inner Components in Outer Case	8 Units					
	Is the Outer Case Splittable?	No					
PRODUCT WEIGHTS	Inner Component						
	Variable Weight Consumer Item	Yes					
	Outer Case						
	Outer Case Gross Weight	3.44 kg					
	Outer Case Net Weight	3.12 kg					
PRODUCT DIMENSIONS	Inner Component						
	Inner Component Depth	0 mm					
	Inner Component Width	0 mm					
	Inner Component Height	0 mm					
	Outer Case						
	Outer Case Depth	385 mm					
	Outer Case Width	260 mm					
	Outer Case Height	75 mm					
	PALLET INFORMATION	Quantity of Cases Per Pallet Layer	10 Cases	Pallet Height		1.1 MTR	
		Quantity of Layers Per Pallet	12 Layers	Pallet Gross Weight		441.6 kg	
Quantity of Cases Per Pallet		120 Cases					
Inner Component Packaging							
PACKAGING	Type	Materials	Weight	Recycled Plastic %	Recyclable	Returnable	
	Tub	Plastic	16.3 g	- %			

Outer Case Packaging

Type	Materials	Weight	Recycled Plastic %	Recyclable	Returnable	Composite
Case	Paper/Cardboard	186 g	- %			

Transport Packaging

Type	Materials	Weight	Recycled Plastic %	Recyclable	Returnable	Composite
Other	Plastic	240 g	- %		Yes	
Other	Paper/Cardboard	386 g	- %		Yes	
Other	Wood	28000 g	- %		Yes	

OTHER INFORMATION

Identification/Health Marks GB AX028

Manufacturer Comments

.

CONTACT INFORMATION

Address

Wrights Food Group
Weston Road
Crewe
Cheshire
CW1 6XQ
England

P: (Phone) 01270 504300

Technical Contact

Nick Gollins
Head of Technical
nick.gollins@compleatfood.com

P: (Phone) 01270 504300

Complaints Contact

Maria Bogdan
Technical Services Administrator
technicalqueriescrewe@compleatfood.com

P: (Phone) 01270 504300

Commercial Contact

Sarah Morris
National Accounts Manager
sarah.morris@compleatfood.com

P: (Phone) 01270 504300

The information on the [Erudus System](#) has been supplied by the manufacturers of the products and, whilst the owners of the Erudus System take steps to ensure the information is regularly updated, they give no warranty and no guarantee that the information is accurate. Product information and ingredients may change, please always read product labels carefully in addition to using the information provided by Erudus.

We do not accept liability for any inaccuracies or incorrect information contained on this site. Please visit <http://www.erudus.com/terms-and-conditions> for full terms and conditions.