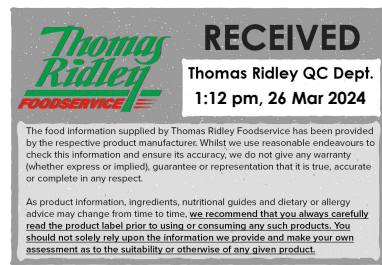


Changed Mar 26, 2024 11:33

Reviewed Mar 26, 2024 11:33

Erudus ID 36c2f38165074386b9ef2a0c472eb76f

Version 3.0



St Pierre 6 Brioche Buns Pre-Sliced x 7

St Pierre 6 Brioche Buns Pre-sliced X 7

PRODUCT DESCRIPTION

6 Pre-Sliced Brioche Buns

| | |
|---------------------------|----------------------------------|
| Brand | St Pierre |
| Manufacturer Product Code | 37816 |
| Manufacturer Version | B1158404 |
| Number | |
| Product Type | Food |
| Product Category | Croissants, Brioche & Pastries |
| Storage Type | Ambient |
| Erudus ID | 36c2f38165074386b9ef2a0c472eb76f |
| Specification Type | Bakery Products |



| | |
|----------------------|----------------|
| Inner Component GTIN | 5027952012511 |
| Outer Case GTIN | 05027952012528 |



INGREDIENTS

Ingredient Declaration

Wheat Flour, Water, Sugar, **Egg**, Rapeseed Oil, Yeast, **Wheat** Gluten, Concentrated Butter (**Milk**), Flavouring, Skimmed **Milk** Powder, Salt, **Rye** Flour, Emulsifier (Mono- and Diacetyl Tartaric Acid Esters of Mono- and Diglycerides Of Fatty Acids), **Milk** Proteins, Deactivated Yeast, Turmeric, Flour Treatment Agent (Ascorbic Acid).

Wheat Flour, Water, **Egg**, Sugar, Invert Sugar Syrup, Rapeseed Oil, Yeast, **Wheat** Gluten, Dried Skimmed **Milk**, Concentrated Butter (**Milk**), Salt, Flavouring, Emulsifier (Mono- and Diglycerides of Fatty Acids), **Milk** Proteins, Deactivated Yeast, Malted **Rye** Flour, Colour (Beta Carotene)

Wheat flour, **Egg**, Water, Sugar, Yeast, Invert Sugar, Rapeseed Oil, **Wheat** Gluten, Concentrated Butter (**Milk**), Malted **Rye** Flour, **Milk** Proteins, Salt, Emulsifier (Mono- and Diglycerides of Fatty Acids), Dried **Milk**, Flavouring, Deactivated Yeast, Colour (Beta Carotene)

ALLERGENS

Product Contains:

| | | | |
|---|-----|--------------------------------------|-------------|
| Celery/Celeriac | No | Mustard | No |
| Cereals Containing Gluten | Yes | Nuts (Tree) | No |
| Barley | No | Almond nuts | No |
| Oats | No | Brazil nuts | No |
| Rye | Yes | Cashew nuts | No |
| Wheat (including Spelt and Khorasan) | Yes | Hazelnuts | No |
| Crustacea | No | Macadamia (Queensland) nuts | No |
| Eggs | Yes | Pecan nuts | No |
| Fish | No | Pistachio nuts | No |
| Lupin | No | Walnuts | No |
| Milk | Yes | Peanuts | No |
| Molluscs | No | Sesame Seeds | May Contain |
| | | Soybeans | No |
| | | Sulphur Dioxide and Sulphites | No |

Risk Source:

Additional Allergen Information

May contain traces of Sesame Seeds.

SUPPLEMENTARY
INGREDIENT
INFORMATION

| | |
|---------------------------------------|----|
| Palm Oil | No |
| Hydrogenated Vegetable Oil/Fat | No |
| GM Protein/DNA | No |

ADDITIVES

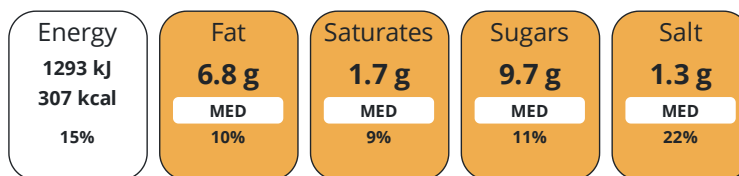
Product Contains:

DIET
SUITABILITY

| | | | |
|-------------------|----|------------------------|--------------|
| Vegan Diet | No | Vegetarian Diet | Suitable for |
| Halal Diet | No | Kosher Diet | No |

NUTRITIONAL
INFORMATION

Each 100g/ml portion contains:



of your reference intake.

Typical values per 100g/ml : Energy 307kcal / 1293kj

| Nutrient | per 100g | RI per 100g | per 50g serving | RI per 50g serving |
|---------------------------|----------|-------------|-----------------|--------------------|
| Energy (kJ) | 1293 kJ | 15% | 646.5 kJ | 8% |
| Energy (kcal) | 307 kcal | 15% | 153.5 kcal | 8% |
| Fat | 6.8 g | 10% | 3.4 g | 5% |
| of which Saturates | 1.7 g | 9% | 0.9 g | 5% |
| Carbohydrate | 49 g | 19% | 24.5 g | 9% |
| of which Sugars | 9.7 g | 11% | 4.9 g | 5% |
| Fibre | 2.7 g | | 1.4 g | |
| Protein | 11 g | 22% | 5.5 g | 11% |
| Salt | 1.3 g | 22% | 0.7 g | 12% |
| Serving Size | 50 g | | | |

SUPPLEMENTARY
NUTRITIONAL
INFORMATION

HANDLING &
STORAGE
INFORMATION

Directions For Use

Pre-sliced, deliciously soft brioche buns, ready to be filled with your favourite burger. With a golden, plump texture to perfectly hold your filling together and a shiny glaze on top, this gently sweet brioche bun tastes great with every type of ingredient.

Storage Instructions

Store in a cool dry place, away from direct sunlight. Once opened store in an airtight container.

| | | | |
|---|--------|---|----|
| Shelf Life from Time of Production | 1 Days | Exempt From Shelf Life Labelling | No |
|---|--------|---|----|

ACCREDITATIONS/
CERTIFICATIONS/
ASSURANCE
SCHEMES
ORIGIN

| |
|------------------------|
| BRCGS Certified |
|------------------------|

| | |
|---|--------|
| Product Country of Origin/Place of | France |
|---|--------|

| |
|-------------------|
| Provenance |
|-------------------|

PRODUCT
CHARACTERISTICS

| |
|-------------------|
| Standards Testing |
|-------------------|

| | | | |
|--|-----|--|-----|
| Do you undertake trend analysis of microbiological results? | Yes | Is shelf life testing undertaken? | Yes |
|--|-----|--|-----|

CONFIGURATION

| |
|--------------------|
| Case Configuration |
|--------------------|

| |
|--------------------------|
| Inner Pack Configuration |
|--------------------------|

| | |
|---|---------|
| Total Quantity of Inner Components in Outer Case | 7 Units |
|---|---------|

| | |
|--------------------------------------|----|
| Is the Outer Case Splittable? | No |
|--------------------------------------|----|

PRODUCT
WEIGHTS

| |
|-----------------|
| Inner Component |
|-----------------|

| | |
|--------------------------------------|-----|
| Variable Weight Consumer Item | Yes |
|--------------------------------------|-----|

| |
|------------|
| Outer Case |
|------------|

| | |
|--------------------------------|---------|
| Outer Case Gross Weight | 2.49 kg |
|--------------------------------|---------|

| | |
|------------------------------|--------|
| Outer Case Net Weight | 2.1 kg |
|------------------------------|--------|

PRODUCT
DIMENSIONS

| |
|-----------------|
| Inner Component |
|-----------------|

| | |
|------------------------------|--------|
| Inner Component Depth | 110 mm |
|------------------------------|--------|

| | |
|------------------------------|--------|
| Inner Component Width | 100 mm |
|------------------------------|--------|

| | |
|-------------------------------|--------|
| Inner Component Height | 300 mm |
|-------------------------------|--------|

| |
|------------|
| Outer Case |
|------------|

| | |
|-------------------------|--------|
| Outer Case Depth | 600 mm |
|-------------------------|--------|

| | |
|-------------------------|--------|
| Outer Case Width | 400 mm |
|-------------------------|--------|

| | |
|--------------------------|--------|
| Outer Case Height | 108 mm |
|--------------------------|--------|

PALLET
INFORMATION

| | | | |
|---|---------|----------------------|-------|
| Quantity of Cases Per Pallet Layer | 5 Cases | Pallet Height | 0 MTR |
|---|---------|----------------------|-------|

| | |
|--------------------------------------|-----------|
| Quantity of Layers Per Pallet | 20 Layers |
|--------------------------------------|-----------|

| | |
|-------------------------------------|-----------|
| Quantity of Cases Per Pallet | 100 Cases |
|-------------------------------------|-----------|

OTHER
INFORMATION

Manufacturer Comments

B1158404

CONTACT
INFORMATION

Address

St Pierre Groupe
Kingston House
Towers Business Park, Wilmslow Road
Manchester
M20 2LX
United Kingdom

P: (Phone) 01619743778

The information on the [Erudus System](#) has been supplied by the manufacturers of the products and, whilst the owners of the Erudus System take steps to ensure the information is regularly updated, they give no warranty and no guarantee that the information is accurate. Product information and ingredients may change, please always read product labels carefully in addition to using the information provided by Erudus.

We do not accept liability for any inaccuracies or incorrect information contained on this site.
Please visit <http://www.erudus.com/terms-and-conditions> for full terms and conditions.