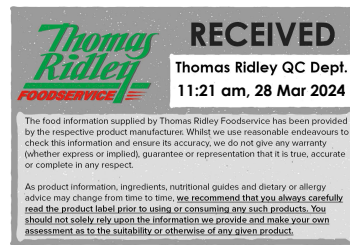


Changed Mar 28, 2024 05:34

Reviewed Mar 28, 2024 05:34

Erudus ID b53d70ed982d4cbaabe054624e12ca57

Version 3.0



Thomas Ridley QC Dept.
11:21 am, 28 Mar 2024

The food information supplied by Thomas Ridley Foodservice has been provided by the respective product manufacturers. Whilst we use reasonable endeavours to check this information and ensure its accuracy, we do not give any warranty (whether express or implied), guarantee or representation that it is true, accurate or complete in any respect.

As product information, ingredients, nutritional guides and dietary or allergy advice may change from time to time, we recommend that you always carefully read the product label prior to using or consuming any such products. You should not solely rely upon the information we provide and make your own assessment as to the suitability or otherwise of any given product.



09619

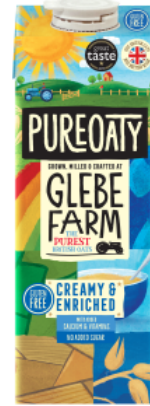
Glebe Farm Foods Pureoaty Creamy and enriched oat drink

Pureoaty Creamy And Enriched Oat Drink 6 X 1 Litre 6x1litre

PRODUCT DESCRIPTION

Gluten Free Creamy and Enriched oat drink

Brand	Glebe Farm Foods Ltd
Manufacturer Product Code	40085
Effective Date	Mar 28, 2024
Product Type	Drink
Product Category	Juices and Cordials
Storage Type	Ambient
Erudus ID	b53d70ed982d4cbaabe054624e12ca57
Specification Type	Drinks



Inner Component GTIN 05060084572607

Outer Case GTIN 5060084572607



INGREDIENTS

Ingredient Declaration

Water, Gluten Free OATS (11%), Sunflower oil, Tricalcium Phosphate, Calcium Carbonate, salt, Vitamins (Folic acid, B12, B2, D)

Ingredient Statements

OATS

ALLERGENS

Product Contains:

Celery/Celeriac	No	Mustard	No
Cereals Containing Gluten	Yes (<20ppm)	Nuts (Tree)	No
Barley	No	Almond nuts	No
Oats	Yes (<20ppm)	Brazil nuts	No
Rye	No	Cashew nuts	No
Wheat (including Spelt and Khorasan)	No	Hazelnuts	No
Crustacea	No	Macadamia (Queensland) nuts	No
Eggs	No	Pecan nuts	No
Fish	No	Pistachio nuts	No
Lupin	No	Walnuts	No
Milk	No	Peanuts	No
Molluscs	No	Sesame Seeds	No
		Soybeans	No
		Sulphur Dioxide and Sulphites	No

Additional Allergen Information

Gluten Free OATS <5ppm

FREE FROM CLAIMS

Gluten-Free Yes

SUPPLEMENTARY INGREDIENT INFORMATION

Palm Oil No

Hydrogenated Vegetable Oil/Fat No

GM Protein/DNA No

ADDITIVES

Product Contains:

Artificial Antioxidants No

Artificial Flavourings No

Artificial Colours No

Artificial Preservatives No

Artificial Flavour Enhancers No

Artificial Sweeteners No

DIET SUITABILITY

Vegan Diet Suitable for

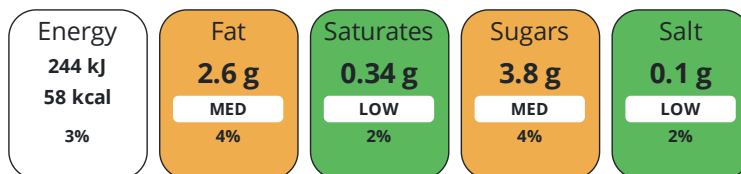
Vegetarian Diet Suitable for

Halal Diet Suitable for

Kosher Diet Suitable for

NUTRITIONAL INFORMATION

Each 100g/ml portion contains:



of your reference intake.

Typical values per 100g/ml : Energy 58kcal / 244kJ

Nutrient	per 100g	RI per 100g
Energy (kJ)	244 kJ	3%
Energy (kcal)	58 kcal	3%
Fat	2.6 g	4%
of which Saturates	0.34 g	2%
Carbohydrate	7.6 g	3%
of which Sugars	3.8 g	4%
Fibre	< 0.5 g	
Protein	1 g	2%
Salt	0.1 g	2%

VITAMINS AND MINERALS

Nutrient	per 100g	RI per 100g
Folate/Folic Acid	30 µg	15%
Calcium	120 mg	15%

SUPPLEMENTARY NUTRITIONAL INFORMATION

HFSS (HIGH IN FAT, SALT AND SUGAR) HANDLING & STORAGE INFORMATION

HFSS Status No

Directions For Use

Handle with care

Storage Instructions

Ambient

Shelf Life from Time of Production 365 Days

Exempt From Shelf Life Labelling No

ACCREDITATIONS/
CERTIFICATIONS/
ASSURANCE
SCHEMES
ORIGIN

SALSA (Safe & Local Supplier Approval)

BRCGS Certified

Organic

Other Accreditation

Product Country of Origin/Place of United Kingdom

Provenance

Additional Origin Details

United Kingdom

PRODUCT
CHARACTERISTICS

Standards Testing

Do you undertake trend analysis of Yes

Is shelf life testing undertaken? Yes

microbiological results?

Microbiological Standards

Organism	Description	Frequency	Target	Maximum	Sample (g or ml)
Bacillus Cereus (cfu/g or ml)		Every Batch	<20	20	1000
Coliforms (cfu/g or ml)		Every Batch	<100	100	1000
E. Coli (cfu/g or ml)		Every Batch	<10	10	1000
Listeria Monocytogenes (cfu/g or ml)	Not detected in 25cfu	Every Batch	<0	0	1000
Total Viable Count (TVC) (cfu/g or ml)		Every Batch	<500	500	1000
Salmonella (cfu/g or ml)		Every Batch	<0	0	1000
Yeast (cfu/g or ml)		Every Batch	<20	20	1000
Moulds (cfu/g or ml)		Every Batch	<20	20	1000
Aerobic Colony Count (ACC) (cfu/g or ml)		Every Batch	<10	10	1000

CONFIGURATION

Case Configuration

Inner Pack Configuration

Total Quantity of Inner Components in 6 Units

Outer Case

Is the Outer Case Splittable? Yes

PRODUCT
WEIGHTS

Inner Component

Inner Component Volume 1 litre

Net Drained Weight 1 g

Outer Case

Outer Case Gross Weight 1079 kg

Outer Case Net Weight 1078 kg

PRODUCT
DIMENSIONS

Inner Component

Inner Component Depth 71 mm

Inner Component Width 70 mm

Inner Component Height 210 mm

Outer Case

Outer Case Depth 218 mm

Outer Case Width 151 mm

Outer Case Height 204 mm

PALLET
INFORMATION

Quantity of Cases Per Pallet Layer 32 Cases

Pallet Height 0 MTR

Quantity of Layers Per Pallet 5 Layers

Pallet Gross Weight 122.4 kg

Quantity of Cases Per Pallet 160 Cases

PACKAGING

Inner Component Packaging

Type	Materials	Weight	Recycled Plastic %	Recyclable	Returnable	Composite
Carton	Plastic	1 g	- %			
Carton	Paper/Cardboard	99 g	- %			

Outer Case Packaging

Type	Materials	Weight	Recycled Plastic %	Recyclable	Returnable	Composite
Case	Plastic	1 g	97.00 %			
Case	Paper/Cardboard	99 g	- %			

OTHER
INFORMATION
CONTACT
INFORMATION

Address

Glebe Farm Foods Ltd
 Glebe Farm Foods Ltd
 Kings Ripton
 Huntingdon
 Cambs
 PE28 2DT
 United Kingdom

P: (Phone) 01487 773282

The information on the [Erudus System](#) has been supplied by the manufacturers of the products and, whilst the owners of the Erudus System take steps to ensure the information is regularly updated, they give no warranty and no guarantee that the information is accurate. Product information and ingredients may change, please always read product labels carefully in addition to using the information provided by Erudus.

We do not accept liability for any inaccuracies or incorrect information contained on this site.
 Please visit <http://www.erudus.com/terms-and-conditions> for full terms and conditions.