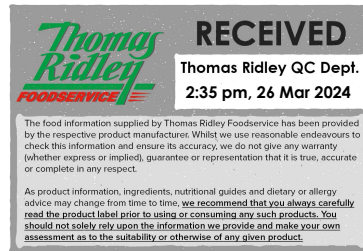


Changed Mar 26, 2024 13:18

Reviewed Mar 26, 2024 13:18

Erudus ID 36761da781294dd9b5989003e98fcf6e

Version 2.0



09631

Lobster Glace 600g

Lobster Glace 4x600g

PRODUCT DESCRIPTION

A composite paste, produced by the blending of food ingredients. A very dark orange-brown coloured reasonably viscous paste, with a distinctive odour of lobster. It has the characteristic appearance and flavour of Lobster Glace when reconstituted with water as directed.

Brand	Essential Cuisine Limited
Manufacturer Product Code	ECLGL/3 - SW00060
Manufacturer Version Number	1
Effective Date	Jul 14, 2022
Product Type	Food
Product Category	Gravy / Bouillon
Storage Type	Ambient
Erudus ID	36761da781294dd9b5989003e98fcf6e
Specification Type	Generic
Inner Component GTIN	5029540000412
Outer Case GTIN	05029540000429



INGREDIENTS

Ingredient Declaration

Ingredients when reconstituted:

Lobster Stock (Water, Lobster (CRUSTACEAN) Extract, Tomato, Carrot Juice), FISH Stock (Water, FISH Extract), Mussel Stock (Water, Mussel (MOLLUSC) Extract), Maltodextrin, Salt, Sunflower Oil, Yeast Extracts, Natural Flavouring, Colour (Paprika Extract).

ALLERGENS

Product Contains:

Celery/Celeriac	No	Mustard	No
Cereals Containing Gluten	No	Nuts (Tree)	No
Barley	No	Almond nuts	No
Oats	No	Brazil nuts	No
Rye	No	Cashew nuts	No
Wheat (including Spelt and Khorasan)	No	Hazelnuts	No
Crustacea	Yes	Macadamia (Queensland) nuts	No
Eggs	No	Pecan nuts	No
Fish	Yes	Pistachio nuts	No
Lupin	No	Walnuts	No
Milk	No	Peanuts	No
Molluscs	Yes	Sesame Seeds	No
		Soybeans	No
		Sulphur Dioxide and Sulphites	No

Additional Allergen Information

For allergens see ingredients in Bold

FREE FROM CLAIMS

Gluten-Free Yes

SUPPLEMENTARY INGREDIENT INFORMATION

Palm Oil No

Hydrogenated Vegetable Oil/Fat No

GM Protein/DNA No

ADDITIVES

Product Contains:

Artificial Antioxidants No

Artificial Flavourings No

Artificial Colours No

Artificial Preservatives No

Artificial Flavour Enhancers No

Artificial Sweeteners No

DIET SUITABILITY

Vegan Diet No

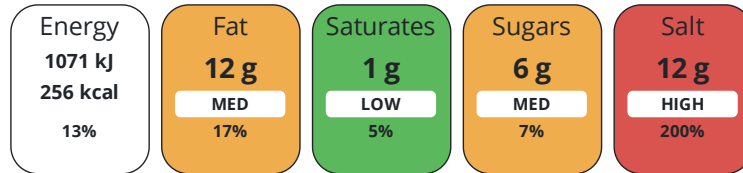
Vegetarian Diet No

Halal Diet No

Kosher Diet No

NUTRITIONAL INFORMATION

Each 100g/ml portion contains:



of your reference intake.

Typical values per 100g/ml : Energy 256kcal / 1071kJ

Nutrient	per 100g	RI per 100g
Energy (kJ)	1071 kJ	13%
Energy (kcal)	256 kcal	13%
Fat	12 g	17%
of which Saturates	1 g	5%
Carbohydrate	25 g	10%
of which Sugars	6 g	7%
Fibre	1 g	
Protein	12 g	24%
Salt	12 g	200%
Sodium	4800 mg	

SUPPLEMENTARY NUTRITIONAL INFORMATION

HANDLING & STORAGE INFORMATION

Directions For Use

For stock use 25g per litre. To make one litre of stock, simply whisk 25g of the product into one litre of warm water in a suitable saucepan. Bring to the boil, stirring constantly.

Storage Instructions

Cool, dry ambient conditions

Storage Instructions After Opening

Refrigerate after opening. Seal lid tightly after use.

Shelf Life from Time of Production 456 Days

Exempt From Shelf Life Labelling No

ACCREDITATIONS/ CERTIFICATIONS/ ASSURANCE SCHEMES

BRCGS Certified

Food for Life Supplier Scheme

Other Accreditation

ORIGIN	Product Country of Origin/Place of Provenance	Other					
PRODUCT CHARACTERISTICS CONFIGURATION	Additional Origin Details	Produced in the EU, packed in the UK					
	Standards Testing						
	Case Configuration	Inner Pack Configuration					
	Total Quantity of Inner Components in Outer Case	4 Units					
PRODUCT WEIGHTS	Is the Outer Case Splittable?	Yes					
	Inner Component						
	Variable Weight Consumer Item	No					
	Inner Component Weight	600 g					
	e mark	Yes					
	Outer Case						
	Outer Case Gross Weight	2.7 kg					
	Outer Case Net Weight	2.4 kg					
	PRODUCT DIMENSIONS	Inner Component					
		Inner Component Depth	87 mm				
Inner Component Width		87 mm					
Inner Component Height		105 mm					
Outer Case							
Outer Case Depth		175 mm					
Outer Case Width		175 mm					
Outer Case Height		105 mm					
PALLET INFORMATION		Quantity of Cases Per Pallet Layer	30 Cases	Pallet Height	0.9 MTR		
		Quantity of Layers Per Pallet	6 Layers	Pallet Gross Weight	517 kg		
	Quantity of Cases Per Pallet	180 Cases					
PACKAGING	Inner Component Packaging						
	Type	Materials	Weight	Recycled Plastic %	Recyclable	Returnable	Composite
	Jar	Plastic	35 g	- %			
	Jar	Paper/Cardboard	2.6 g	- %			
	Jar	Aluminium	1.1 g	- %			
	Outer Case Packaging						
	Type	Materials	Weight	Recycled Plastic %	Recyclable	Returnable	Composite
	Case	Paper/Cardboard	90 g	- %			
	Transport Packaging						
	Type	Materials	Weight	Recycled Plastic %	Recyclable	Returnable	Composite
	Other	Plastic	500 g	- %			
	Other	Paper/Cardboard	500 g	- %			
	Other	Wood	30000 g	- %			
	MARKETING INFORMATION	Marketing Description	A delicate rich lobster reduction that gives an authentic infusion of flavour.				

OTHER
INFORMATION

Intrastat/Taric Code

2103

Manufacturer Comments

N/A

CONTACT
INFORMATION

Address

Essential Cuisine Limited

Essential Cuisine Ltd

Browning Way

Winsford

Cheshire

CW7 2RH

United Kingdom

P: (Phone) 01606 541490

The information on the [Erudus System](#) has been supplied by the manufacturers of the products and, whilst the owners of the Erudus System take steps to ensure the information is regularly updated, they give no warranty and no guarantee that the information is accurate. Product information and ingredients may change, please always read product labels carefully in addition to using the information provided by Erudus.

We do not accept liability for any inaccuracies or incorrect information contained on this site.
Please visit <http://www.erudus.com/terms-and-conditions> for full terms and conditions.