


Changed Mar 21, 2024 16:33


Reviewed Mar 21, 2024 16:33

Erudus ID db328e1d3c7c4a8c996f4703bb7b3b61

Version 2.0



RECEIVED
Thomas Ridley QC Dept.
8:56 am, 22 Mar 2024



United around food data

The food information supplied by Thomas Ridley Foodservice has been provided by the respective product manufacturer. Whilst we use reasonable endeavours to check this information and ensure its accuracy, we do not give any warranty (whether express or implied), guarantee or representation that it is true, accurate or complete in any respect.

As product information, ingredients, nutritional guides and dietary or allergy advice may change from time to time, we recommend that you always carefully read the product label prior to using or consuming any such products. You should not solely rely upon the information we provide and make your own assessment as to the suitability or otherwise of any given product.

09745

CH020 Breaded Chicken Steak (60g) Red Tractor

Breaded Chicken Steak 2x40x60g

PRODUCT DESCRIPTION

Breaded Red Tractor Chicken Steaks. Chopped and shaped, formed chicken in a crispy breadcrumb coating.

Brand	The UK Foodhall Ltd
Manufacturer Product Code	CH020
Product Type	Food
Product Category	Chicken & Turkey
Storage Type	Frozen
Erudus ID	db328e1d3c7c4a8c996f4703bb7b3b61
Specification Type	Meat

Outer Case GTIN 5060329042629



INGREDIENTS

Ingredient Declaration

Chicken (60%), WHEAT flour (WHEAT flour, Calcium carbonate, Iron, Niacin, Thiamin), Water, Rapeseed oil, Cornflour, Pea fibre, Salt, Yeast, WHEAT gluten, WHEAT starch, Raising agents (Disodium diphosphate, Sodium bicarbonate), Spirit vinegar, Yeast extract, Onion powder, Garlic powder, Sugar, Maltodextrin, White pepper, Dried sage, Flavouring, Concentrated lemon juice, Colour (Paprika extract), Cane sugar syrup, Sage extract.

ALLERGENS

Product Contains:

Celery/Celeriac	No	Mustard	No
Cereals Containing Gluten	Yes	Nuts (Tree)	No
Barley	No	Almond nuts	No
Oats	No	Brazil nuts	No
Rye	No	Cashew nuts	No
Wheat (including Spelt and Khorasan)	Yes	Hazelnuts	No
Crustacea	No	Macadamia (Queensland) nuts	No
Eggs	No	Pecan nuts	No
Fish	No	Pistachio nuts	No
Lupin	No	Walnuts	No
Milk	No	Peanuts	No
Molluscs	No	Sesame Seeds	No
		Soybeans	No
		Sulphur Dioxide and Sulphites	No

Additional Allergen Information

Product contains WHEAT.

SUPPLEMENTARY INGREDIENT INFORMATION

Palm Oil	No
Hydrogenated Vegetable Oil/Fat	No
GM Protein/DNA	No

ADDITIVES

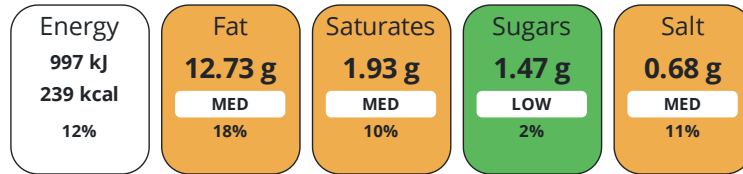
Product Contains:

Artificial Antioxidants	No	Artificial Flavourings	No
Artificial Colours	No	Artificial Preservatives	No
Artificial Flavour Enhancers	No	Artificial Sweeteners	No
Halal Diet	No	Kosher Diet	No

DIET SUITABILITY

NUTRITIONAL INFORMATION

Each 100g/ml portion contains:



of your reference intake.

Typical values per 100g/ml : Energy 239kcal / 997kJ

Nutrient	per 100g	RI per 100g	per 60g serving	RI per 60g serving
Energy (kJ)	997 kJ	12%	598.2 kJ	7%
Energy (kcal)	239 kcal	12%	143.4 kcal	7%
Fat	12.73 g	18%	7.6 g	11%
of which Saturates	1.93 g	10%	1.2 g	6%
of which Mono-unsaturates	6.9 g		4.1 g	
of which Polyunsaturates	2.5 g		1.5 g	
Carbohydrate	16.53 g	6%	9.9 g	4%
of which Sugars	1.47 g	2%	0.9 g	1%
Fibre	2.4 g		1.4 g	
Protein	13.63 g	27%	8.2 g	16%
Salt	0.68 g	11%	0.4 g	7%
Sodium	270 mg		162 mg	

Serving Size 60 g

SUPPLEMENTARY NUTRITIONAL INFORMATION

HFSS (HIGH IN FAT, SALT AND SUGAR) HANDLING & STORAGE INFORMATION

HFSS Status No

Directions For Use

All Appliances vary. These are guidelines only. Place in a preheated oven at 220°C/Gas Mark 6 for 14-16 minutes. Check food is piping hot throughout before serving >75°C. Do not reheat.

Storage Instructions

Store frozen at < -18°C.

Shelf Life from Time of Production 365 Days **Exempt From Shelf Life Labelling** No

ACCREDITATIONS/ CERTIFICATIONS/ ASSURANCE SCHEMES

BRCGS Certified **Red Tractor**

ORIGIN	Product Country of Origin/Place of Provenance United Kingdom						
	Additional Origin Details						
	Made in the UK with Red Tractor Assured Chicken.						
PRODUCT CHARACTERISTICS	Standards Testing						
	Do you undertake trend analysis of microbiological results?	No	Is shelf life testing undertaken?	No			
CONFIGURATION	Case Configuration		Inner Pack Configuration				
	Total Quantity of Inner Components in Outer Case	80 Units	Is Inner Pack Splittable?	No			
	Total Quantity of Inner Packs in Outer Case	2 Units	Quantity of Inner Components in Inner Pack	40			
	Is the Outer Case Splittable?	No					
PRODUCT WEIGHTS	Inner Component						
	Variable Weight Consumer Item	No					
	Inner Component Weight	60 g					
	Outer Case						
	Outer Case Gross Weight	5.1 kg					
	Outer Case Net Weight	4.8 kg					
PRODUCT DIMENSIONS	Inner Component						
	Inner Component Depth	380 mm					
	Inner Component Width	280 mm					
	Inner Component Height	142 mm					
	Outer Case						
	Outer Case Depth	380 mm					
	Outer Case Width	280 mm					
	Outer Case Height	142 mm					
PALLET INFORMATION	Quantity of Cases Per Pallet Layer	10 Cases	Pallet Height	1.67 MTR			
	Quantity of Layers Per Pallet	10 Layers	Pallet Gross Weight	538 kg			
	Quantity of Cases Per Pallet	100 Cases					
PACKAGING	Inner Pack Packaging						
	Type	Materials	Weight	Recycled Plastic %	Recyclable	Returnable	Composite
	Bag	Plastic	20 g	- %			
	Outer Case Packaging						
	Type	Materials	Weight	Recycled Plastic %	Recyclable	Returnable	Composite
	Case	Paper/Cardboard	242 g	- %			
	Transport Packaging						
	Type	Materials	Weight	Recycled Plastic %	Recyclable	Returnable	Composite
	Pallet Wrap	Plastic	500 g	0.00 %			
	Pallet	Wood	28000 g	- %			
OTHER INFORMATION							

CONTACT
INFORMATION

Address

The UK Foodhall Ltd
2 Darwin Court
Oxon Business Park
Shrewsbury
Shropshire
SY3 5AL
England

P: (Phone) 0845 3011182

Complaints Contact

wemayhaveaproblem@karenmcquade.com

P: (Phone) 0345-3011182

Technical Contact

Clara Edwards
Technical Manager
technical@karenmcquade.com

P: (Phone) 0345-3011182

Commercial Contact

Shaun Mancrief
Commercial Director
supplychain@karenmcquade.com

P: (Phone) 03453011182

The information on the [Erudus System](#) has been supplied by the manufacturers of the products and, whilst the owners of the Erudus System take steps to ensure the information is regularly updated, they give no warranty and no guarantee that the information is accurate. Product information and ingredients may change, please always read product labels carefully in addition to using the information provided by Erudus.

We do not accept liability for any inaccuracies or incorrect information contained on this site.
Please visit <http://www.erudus.com/terms-and-conditions> for full terms and conditions.