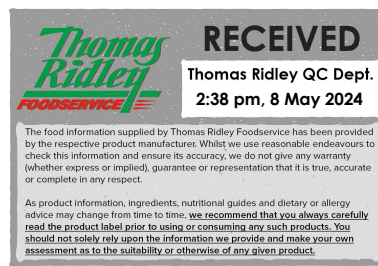


Changed May 07, 2024 16:04
Reviewed May 07, 2024 16:04
Erudus ID 9f3e4d9d47cc42db8fca31bec8fcf705
Version 2.0



09746

Traditional Breadsticks with Extra Virgin Olive Oil 12x125g

Breadstick With Extra Virgin Olive Oil 12x125g

PRODUCT DESCRIPTION

Breadsticks with extra virgin olive oil.

Brand	AB World
Manufacturer Product Code	220096
Effective Date	May 7, 2024
Product Type	Food
Product Category	Baking Mixes and Bakery Ingredients
Storage Type	Ambient
Erudus ID	9f3e4d9d47cc42db8fca31bec8fcf705
Specification Type	Generic
Inner Component GTIN	8003899182002
Manufacturer Component Code	220096
Outer Case GTIN	8003899282009



INGREDIENTS

Ingredient Declaration

WHEAT Flour, Extra Virgin Olive Oil (6.5%), Yeast, Salt, Malt: BARLEY Malt Extract, Malted WHEAT Flour.

ALLERGENS

Product Contains:

Celery/Celeriac	No
Cereals Containing Gluten	Yes (<20ppm)
Barley	Yes (<20ppm)
Oats	No
Rye	No
Wheat (including Spelt and Khorasan)	Yes
Crustacea	No
Eggs	No
Fish	No
Lupin	No
Milk	May Contain
Molluscs	No
Mustard	May Contain
Nuts (Tree)	No
Almond nuts	No
Brazil nuts	No
Cashew nuts	No
Hazelnuts	No
Macadamia (Queensland) nuts	No
Pecan nuts	No
Pistachio nuts	No
Walnuts	No
Peanuts	No
Sesame Seeds	May Contain
Soybeans	May Contain
Sulphur Dioxide and Sulphites	No

Risk Source:

Milk (Risk Source)	Factory
Mustard (Risk Source)	Raw Material

Allergen Statement On Pack

For allergens including cereals containing gluten, see ingredients in bold. May also contain sesame, soya, mustard and milk.

Additional Allergen Information

For allergens, including cereals containing gluten, see ingredients in bold. May also contain sesame, soya, mustard and milk.

SUPPLEMENTARY INGREDIENT INFORMATION

Palm Oil	No
Hydrogenated Vegetable Oil/Fat	No
GM Protein/DNA	No

ADDITIVES

Product Contains:

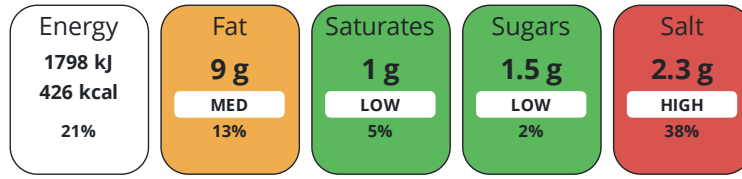
Artificial Antioxidants	No
Artificial Colours	No
Artificial Flavour Enhancers	No
Artificial Flavourings	No
Artificial Preservatives	No
Artificial Sweeteners	No

DIET SUITABILITY

Vegan Diet	Suitable for	Vegetarian Diet	Suitable for
Halal Diet	No	Kosher Diet	No

NUTRITIONAL INFORMATION

Each 100g/ml portion contains:



of your reference intake.

Typical values per 100g/ml : Energy 426kcal / 1798kj

Nutrient	per 100g	RI per 100g
Energy (kJ)	1798 kJ	21%
Energy (kcal)	426 kcal	21%
Fat	9 g	13%
of which Saturates	1 g	5%
Carbohydrate	73 g	28%
of which Sugars	1.5 g	2%
Fibre	2.5 g	
Protein	12 g	24%
Salt	2.3 g	38%

Source of Nutritional Information Manufacturers analysis

SUPPLEMENTARY NUTRITIONAL INFORMATION

HANDLING & STORAGE INFORMATION

Directions For Use

Ready to eat

Storage Instructions

Store in a dry place.

Shelf Life from Time of Production 545 Days

Exempt From Shelf Life Labelling No

ACCREDITATIONS/ CERTIFICATIONS/ ASSURANCE SCHEMES

BRCGS Certified IFS Food Standard

Other Accreditation

ORIGIN

Product Country of Origin/Place of Italy

Provenance

Additional Origin Details

Italy

PRODUCT CHARACTERISTICS

Standards Testing

Do you undertake trend analysis of microbiological results? Yes

Is shelf life testing undertaken? Yes

Commercially Sterile No

Microbiological Standards

Organism	Description	Frequency	Target	Maximum	Sample (g or ml)
Bacillus Cereus (cfu/g or ml)		Every 6 months	<50	50	125
E. Coli (cfu/g or ml)		Every 6 months	<10	10	125

Organism	Description	Frequency	Target	Maximum	Sample (g or ml)
Staphylococcus Aureus (cfu/g or ml)		Every 6 months	<10	10	125
Total Viable Count (TVC) (cfu/g or ml)		Every 6 months	<200	200	125
Salmonella (cfu/g or ml)	in 25g	Every 6 months	=0	1	125
Yeast (cfu/g or ml)		Every 6 months	<50	50	125
Moulds (cfu/g or ml)		Every 6 months	<50	50	125

Analytical Standards

Test	Description	Frequency	Target	Range	Sample (g or ml)
Moisture (%)		Every 6 months	<4	2 to 4	125

CONFIGURATION

Case Configuration

Variable Inner Components in Outer Case	No
Total Quantity of Inner Components in Outer Case	12 Units
Is the Outer Case Splittable?	No
Inner Pack Configuration	

PRODUCT WEIGHTS

Inner Component

Variable Weight Consumer Item	No
Inner Component Weight	125 g
e mark	Yes

Outer Case

Outer Case Gross Weight	2.25 kg
Outer Case Net Weight	1.5 kg

PRODUCT DIMENSIONS

Inner Component

Inner Component Depth	45 mm
Inner Component Width	280 mm
Inner Component Height	100 mm

Outer Case

Outer Case Depth	285 mm
Outer Case Width	200 mm
Outer Case Height	290 mm

PALLET INFORMATION

Quantity of Cases Per Pallet Layer	17 Cases
Quantity of Layers Per Pallet	4 Layers
Quantity of Cases Per Pallet	68 Cases
Pallet Height	1.34 MTR
Pallet Gross Weight	182.8 kg

PACKAGING

Inner Component Packaging

Type	Materials	Weight	Recycled Plastic %	Recyclable	Returnable	Composite
Bag	Plastic	2.5 g	- %			
Bag	Paper/Cardboard	35 g	- %			

Outer Case Packaging

Type	Materials	Weight	Recycled Plastic %	Recyclable	Returnable	Composite
Case	Paper/Cardboard	217 g	- %			

OTHER INFORMATION

Commodity Code	19059055
-----------------------	----------

Manufacturer Comments

N/A

CONTACT INFORMATION

Address

AB World
Kiriana House,
Kiribati Way,
Leigh,
Lancashire,
WN7 5RS
England

P. (Phone) 01942 267000

The information on the [Erudus System](#) has been supplied by the manufacturers of the products and, whilst the owners of the Erudus System take steps to ensure the information is regularly updated, they give no warranty and no guarantee that the information is accurate. Product information and ingredients may change, please always read product labels carefully in addition to using the information provided by Erudus.

We do not accept liability for any inaccuracies or incorrect information contained on this site.
Please visit <http://www.erudus.com/terms-and-conditions> for full terms and conditions.