

# San Pellegrino Orange 330ml



**EAN**  
8002270506833

**Target market(s)**  
GB, IE

## Components

### Ingredients

Water  
Orange Juice from Concentrate (16%)  
Sugar  
Carbon Dioxide  
Orange Extract (0,1%)  
Acid: Citric Acid  
Natural Flavourings  
Stabiliser: Pectins  
Natural Orange Flavouring  
Sweetener: Steviol Glycosides from Stevia  
Sweetener from natural origin

### Nutrition

	Per 100ml	Per Can	% RI* Per Can
Energy	82kJ 19kcal	272kJ 64kcal	3%
Fat, of which:	0.0g	0.0g	0%
saturates	0.0g	0.0g	0%
Carbohydrate	4.4g	14.5g	6%
of which: sugars	4.4g	14.5g	16%
Fibre	0.0g	0.1g	-
Protein	0.1g	0.3g	<1%
Salt	0.01g	0.03g	<1%

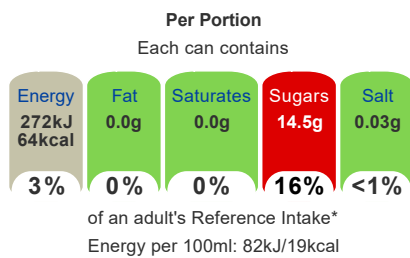
\*Reference Intake of an average adult (8400kJ/2000kcal)

Contains 1 serving

### Calculated Nutrition

	per 100ml	Per Can
Energy (kJ)	82	272
Energy (kcal)	19	64
Fat (g)	0	0
of which saturates (g)	0	0
Carbohydrate (g)	4.4	14.5
of which sugars (g)	4.4	14.5
Fibre (g)	0	0.1
Protein (g)	0.1	0.3
Salt (g)	0.01	0.03

### Front of Pack Nutrition



\*Reference Intake of an average adult (8400kJ/2000kcal)

### Nutrition Other Text

Reference Intake of an average adult (8400kJ/2000kcal)  
Contains 1 serving

### Reference Intake Statement

Reference Intake Statement - Reference Intake of an average adult (8400kJ/2000kcal)

## Product Description

### Brand

San Pellegrino

### Features

Sparkling Orange Beverage with 16% orange juice from concentrate, with sugar and sweeteners

### Standardised Brand

Brand - San Pellegrino

### Regulated Product Name

Sparkling orange beverage with 16% orange juice from concentrate, with sugar and sweetener.

## Marketing

### Company Name

Stafford Lynch Ltd

### Company Address

PO Box No 207,  
York,  
YO91 IXY.

Stafford Lynch Ltd,  
Unit 101 Norhtwest Business Park,  
Ballycoolin,  
Dublin,  
D15 NN20.

### Product Marketing

SANPELLEGRINO Aranciata (Orange) is characterised by the wonderful citrusy finish and intense aromas of real juice and peel from sun-ripened oranges. It's a unique Italian treat inspired by homemade Aranciata: a carbonated drink mixing real orange juice, carbonated water and sugar.

### Brand Marketing

An Italian tradition since 1932, SANPELLEGRINO Italian Sparkling Drinks have delighted the world with their authentic Italian taste. Allow your senses to take in the sun-ripened fruit. Its unique and intense taste make every moment special and allow you to enjoy life *deliziosa* any time you choose.

## Health & Lifestyle

### Additives

Sweeteners - Contains

## Storage & Usage

### Storage Type

#### Type

Ambient

### Preparation and Usage

Best served chilled.

### Storage

Best before: see base of can.

Store in a clean, cool, dry and odourless place, away from direct sunlight and freezing temperatures.

## Brandbank Captured Pack Data

### Pack Size

330ml e

### Numeric Size

Numeric Size - 330

### Recycling Info

Pack - Recycle

### Pack Type

Type - Can

### Recycling Scheme

- OPRL

### Recycling Other Text

I Am Recyclable!  
Please Recycle Me!

### Usage Count

Number of uses - Servings

1

### Usage Other Text

Contains 1 serving

## Customer Services

### Manufacturers Address

PO Box No 207,  
York,  
YO91 1XY.

Stafford Lynch Ltd.,  
Unit 101 Norhtwest Business Park,  
Ballycoolin,  
Dublin,  
D15 NN20.

Sanpellegrino S.p.A.,  
San Pellegrino Terme (BG),  
Loc. Ruspino,  
Italy.

### Return To

UK Consumer Enquiries  
(Mon-fri 9am-5pm): Freephone - 0800 000030  
PO Box No 207,  
York,  
YO91 1XY.

Ireland: Stafford Lynch Ltd,  
Unit 101 Norhtwest Business Park,  
Ballycoolin,  
Dublin,  
D15 NN20.  
Tel : (+353) 1 8023 100

### Telephone Helpline

UK 0800 000030  
(+353) 1 8023 100

### Social Media

Follow us on Facebook, Instagram

## Extended Data

### Languages On Pack

- English

### Description Breakdown

Variant - Orange



Nutrition Information: Typical Values	Per 100ml	Per Can	% RI* Per Can
Energy	82kJ 19kcal	272kJ 64kcal	3%
Fat, of which: saturates	0.0g 0.0g	0.0g 0.0g	0% 0%
Carbohydrate of which:sugars	4.4g 4.4g	14.5g 14.5g	6% 16%
Fibre	0.0g	0.1g	-
Protein	0.1g	0.3g	<1%
Salt	0.01g	0.03g	<1%

\*Reference Intake of an average adult (8400kJ/2000kcal). Contains 1 serving.

