

San Pellegrino Blood Orange 330ml



EAN
8002270586835

Target market(s)
GB, IE

Components

Ingredients

Water
Orange Juice from Concentrate (13%)
Blood Orange Juice from Concentrate (3%)
Sugar
Carbon Dioxide
Natural Orange Flavouring with other Natural Flavourings
Orange Extract
Colours: Anthocyanins and Paprika Extract
Stabiliser: Pectins
Acid: Citric Acid
Sweetener: Steviol Glycosides From Stevia
Natural Flavourings
Sweetener from Natural Origin

Nutrition

	Per 100ml	Per Can	% RI* Per Can
Energy	93kJ	307kJ	4%
	22kcal	73kcal	
Fat, of which:	0.0g	0.0g	0%
saturates	0.0g	0.0g	0%
Carbohydrate	4.9g	16.2g	6%
of which: sugars	4.9g	16.2g	18%
Fibre	0.0g	0.0g	-
Protein	0.1g	0.4g	<1%
Salt	0.00g	0.00g	0%

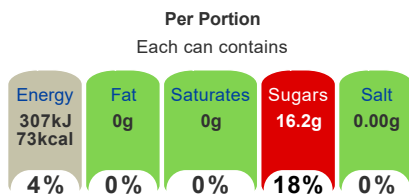
*Reference Intake of an average adult (8400kJ/2000kcal)

Contains 1 serving

Calculated Nutrition

	per 100ml	Per Can
Energy (kJ)	93	307
Energy (kcal)	22	73
Fat (g)	0	0
of which saturates (g)	0	0
Carbohydrate (g)	4.9	16.2
of which sugars (g)	4.9	16.2
Fibre (g)	0	0
Protein (g)	0.1	0.4
Salt (g)	0	0

Front of Pack Nutrition



of an adult's Reference Intake*

Energy per 100ml: 93kJ/22kcal

*Reference Intake of an average adult (8400kJ/2000kcal)

Nutrition Other Text

Reference Intake of an average adult (8400kJ/2000kcal)
Contains 1 serving

Reference Intake Statement

Reference Intake Statement - Reference Intake of an average adult (8400kJ/2000kcal)

Product Description

Brand

San Pellegrino

Features

Sparkling blood orange beverage with orange juice and blood orange juice from concentrate, with sugar and sweeteners

Standardised Brand

Brand - Sanpellegrino

Regulated Product Name

Italian Sparkling Drink with 13% orange juice and 3% blood orange juice from concentrate, with sugar and sweetener.

Marketing

Company Name

Stafford Lynch Ltd

Company Address

PO Box No 207,
York,
YO91 1XY.

Stafford Lynch Ltd,
Unit 101,
Northwest Business Park,
Ballycoolin,
Dublin,
D15 NN20.

Product Marketing

SANPELLEGRINO Aranciata Rossa (Blood Orange) is elegantly sweet, soft and well-balanced. It's made with Italian sanguinello orange juice, giving the beverage an aromatic and intense citrus flavour.

Sparkling blood orange beverage with orange juice and blood orange juice from concentrate, with sugar and sweeteners

Brand Marketing

An Italian tradition since 1932, SANPELLEGRINO Italian Sparkling Drinks have delighted the world with their authentic Italian taste. Allow your senses to take in the sun-ripened fruit. Its unique and intense taste make every moment special and allow you to enjoy life *deliziosa* any time you choose.

Health & Lifestyle

Additives

Sweeteners - Contains

Storage & Usage

Storage Type

Type

Ambient

Preparation and Usage

Best served chilled.

Storage

Best before (end of the month, mm/yyyy): see base of can.
Store in a clean, cool, dry and odourless place, away from direct sunlight and freezing temperatures.

Brandbank Captured Pack Data

Pack Size

330ml e

Numeric Size

Numeric Size - 330

Recycling Info

Pack - Recycle

Pack Type

Type - Can

Recycling Scheme

- OPRL

Recycling Other Text

I am Recyclable!
Please Recycle Me!

Usage Count

Number of uses - Servings

1

Usage Other Text

Contains 1 serving

Customer Services

Manufacturers Address

Product of:
Sanpellegrino S.p.A.,
San Pellegrino Terme (BG),
Loc. Ruspino,
Italy.

PO Box No 207,
York,
YO91 1XY.

Stafford Lynch Ltd,
Unit 101,
Northwest Business Park,
Ballycoolin,
Dublin,
D15 NN20.

Return To

UK Consumer Enquiries (Mon-Fri 9am-5pm):
Freephone - 0800 000030
PO Box No 207,
York,
YO91 1XY.

Ireland:
Stafford Lynch Ltd,
Unit 101,
Northwest Business Park,
Ballycoolin,
Dublin,
D15 NN20.
Tel: (+353) 1 8023 100

Telephone Helpline

0800 000030
Ireland: (+353) 1 8023 100

Social Media

Follow us on Facebook and Instagram

Extended Data

Languages On Pack

- English

Description Breakdown

Variant - Blood Orange



Nutrition Information: Typical Values	Per 100ml	Per Can	% RI* Per Can
Energy	93kJ 22kcal	307kJ 73kcal	4%
Fat, of which: saturates	0.0g 0.0g	0.0g 0.0g	0% 0%
Carbohydrate of which:sugars	4.9g 4.9g	16.2g 16.2g	6% 18%
Fibre	0.0g	0.0g	-
Protein	0.1g	0.4g	<1%
Salt	0.00g	0.00g	0%

*Reference Intake of an average adult (8400kJ/2000kcal). Contains 1 serving.

