

# San Pellegrino Lemon 330ml



**EAN**  
8002270576829

**Target market(s)**  
GB, IE

## Components

### Ingredients

Water  
Lemon Juice from Concentrate (16%)  
Sugar  
Carbon Dioxide  
Natural Lemon Flavouring  
Natural Flavourings  
Stabiliser: Pectins  
Sweetener: Steviol Glycosides from Stevia  
Sweetener from natural origin

### Nutrition

	Per 100ml	Per Can	% RI* Per Can
Energy	94kJ	309kJ	4%
	22kcal	73kcal	
Fat, of which:	0.0g	0.1g	<1%
saturates	0.0g	0.0g	0%
Carbohydrate	4.5g	14.9g	6%
of which: sugars	4.5g	14.9g	17%
Fibre	0.1g	0.3g	-
Protein	0.0g	0.2g	<1%
Salt	0.00g	0.02g	<1%

\*Reference Intake of an average adult (8400kJ/2000kcal)

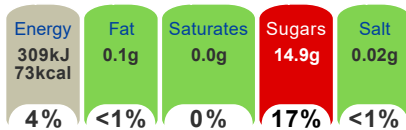
Contains 1 serving

### Calculated Nutrition

	per 100ml	Per Can
Energy (kJ)	94	309
Energy (kcal)	22	73
Fat (g)	0	0.1
of which saturates (g)	0	0
Carbohydrate (g)	4.5	14.9
of which sugars (g)	4.5	14.9
Fibre (g)	0.1	0.3
Protein (g)	0	0.2
Salt (g)	0	0.02

### Front of Pack Nutrition

Per Portion  
Each can contains



of an adult's Reference Intake\*  
Energy per 100ml: 94kJ/22kcal

\*Reference Intake of an average adult (8400kJ/2000kcal)

### Nutrition Other Text

Reference Intake of an average adult (8400kJ/2000kcal)  
Contains 1 serving

### Reference Intake Statement

Reference Intake Statement - Reference Intake of an average adult (8400kJ/2000kcal)

## Product Description

### Brand

San Pellegrino

### Features

Sparkling Lemon Beverage with 16% lemon juice, with sugar and sweeteners

### Standardised Brand

Brand - San Pellegrino

### Regulated Product Name

Sparkling lemon beverage with 16% lemon juice from concentrate, with sugar and sweetener.

## Marketing

### Company Name

Stafford Lynch Ltd

### Company Address

PO Box No 207,  
York,  
YO91 1XY.

Stafford Lynch Ltd,  
Unit 101 Norhtwest Business Park,  
Ballycoolin,  
Dublin,  
D15 NN20.

### Product Marketing

The finest sun-ripened lemons of Southern Italy give SANPELLEGRINO Limonata (Lemon) its authentic citrus sparkle. It's a perfect balance of pleasingly tart and sweet notes, characterized by the intense, fragrant aroma of lemon juice.

### Brand Marketing

An Italian tradition since 1932, SANPELLEGRINO Italian Sparkling Drinks have delighted the world with their authentic Italian taste. Allow your senses to take in the sun-ripened fruit. Its unique and intense taste make every moment special and allow you to enjoy life *deliziosa* any time you choose.

## Health & Lifestyle

### Additives

Sweeteners - Contains

## Storage & Usage

### Storage Type

#### Type

Ambient

### Preparation and Usage

Best served chilled.

### Storage

Best before: see base of can.

Store in a clean, cool, dry and odourless place, away from direct sunlight and freezing temperatures.

## Brandbank Captured Pack Data

### Pack Size

330ml e

### Numeric Size

Numeric Size - 330

### Recycling Info

Pack - Recycle

### Pack Type

Type - Can

### Recycling Scheme

- OPRL

### Recycling Other Text

I Am Recyclable! Please Recycle Me!

### Usage Count

Number of uses - Servings

1

### Usage Other Text

Contains 1 serving

## Customer Services

### Manufacturers Address

PO Box No 207,  
York,  
YO91 1XY.

Stafford Lynch Ltd,  
Unit 101 Norhtwest Business Park,  
Ballycoolin,  
Dublin,  
D15 NN20.

Sanpellegrino S.p.A.,  
San Pellegrino,  
Terme (BG),  
Loc. Ruspino,  
Italy.

### Return To

UK Consumer Enquiries  
(Mon-Fri 9am-5pm): Freephone - 0800 000030  
PO Box No 207,  
York,  
YO91 1XY.

Ireland: Stafford Lynch Ltd,  
Unit 101 Norhtwest Business Park,  
Ballycoolin,  
Dublin,  
D15 NN20.  
Tel: (+353) 1 8023 100

### Telephone Helpline

UK 0800 000030  
(+353) 1 8023 100

### Social Media

Follow us on Facebook, Instagram

## Extended Data

### Languages On Pack

- English

### Description Breakdown

Variant - Lemon



Nutrition Information: Typical Values	Per 100ml	Per Can	% RI* Per Can
Energy	94kJ 22kcal	309kJ 73kcal	4%
Fat, of which: saturates	0.0g 0.0g	0.1g 0.0g	<1% 0%
Carbohydrate of which:sugars	4.5g 4.5g	14.9g 14.9g	6% 17%
Fibre	0.1g	0.3g	-
Protein	0.0g	0.2g	<1%
Salt	0.00g	0.02g	<1%

\*Reference Intake of an average adult (8400kJ/2000kcal). Contains 1 serving.

