

09779

# Cottage Pie (12 x 400g)

Cottage Pie 12x400g

## PRODUCT DESCRIPTION

A rich minced Beef sauce with Carrot and Onion topped with fluffy mashed Potato.

Brand	Wrights Food Group
Manufacturer Product Code	Y01820
Product Type	Food
Product Category	Meat and Meat Products
Storage Type	Frozen
Erudus ID	cb7e7f0a083b4cf18a8c94be4fe7e55a
Specification Type	Legacy
Outer Case GTIN	5060108218207



## INGREDIENTS

### Ingredient Declaration

Potatoes (46%) (**SULPHITES**), Beef (17%), Water, Red Wine (**SULPHITES**), Onion, Carrot, Unsalted Butter (**MILK**), Beef Stock (Beef, Rehydrated Potato, Salt, Molasses, Caramelised Sugar Syrup, Dried Onion Powder, Natural Flavouring), Thickeners (E1422, E461), Rapeseed Oil, Garlic Nuggets, Tomato Paste, Worcestershire Sauce (Malt Vinegar (from **BARLEY**), Spirit Vinegar, Molasses, Sugar, Salt, Anchovies (**FISH**), Tamarind Extract, Onions, Garlic, Spice, Flavourings), Salt, Red Wine Vinegar, Sugar, Onion Powder, Yeast Extract, Malt Extract (**BARLEY**), Thyme, Cracked Black Pepper, Ground White Pepper, Rosemary.

## ALLERGENS

Product Contains:

<b>Celery/Celeriac</b>	No	<b>Mustard</b>	No
<b>Cereals Containing Gluten</b>	Yes	<b>Nuts (Tree)</b>	May Contain
<b>Barley</b>	Yes	<b>Almond nuts</b>	May Contain
<b>Oats</b>	No	<b>Brazil nuts</b>	No
<b>Rye</b>	No	<b>Cashew nuts</b>	May Contain
<b>Wheat (including Spelt and Khorasan)</b>	No	<b>Hazelnuts</b>	No
<b>Gluten content &lt;20ppm</b>	No	<b>Macadamia (Queensland) nuts</b>	No
<b>Crustacea</b>	No	<b>Pecan nuts</b>	No
<b>Eggs</b>	No	<b>Pistachio nuts</b>	No
<b>Fish</b>	Yes	<b>Walnuts</b>	No
<b>Lupin</b>	No	<b>Peanuts</b>	No
<b>Milk</b>	Yes	<b>Sesame Seeds</b>	No
<b>Molluscs</b>	No	<b>Soybeans</b>	No
		<b>Sulphur Dioxide and Sulphites</b>	Yes

Risk Source:

### Additional Allergen Information

For allergens (including cereals containing gluten) see ingredients in CAPITALS. May also contain Nuts.

## SUPPLEMENTARY INGREDIENT INFORMATION

<b>Palm Oil</b>	No
<b>Hydrogenated Vegetable Oil/Fat</b>	No
<b>GM Protein/DNA</b>	No

**RECEIVED**

Thomas Ridley QC Dept.

9:42 am, 2 Apr 2024

The food information supplied by Thomas Ridley Foodservice has been provided by the respective product manufacturer. Whilst we use reasonable endeavours to check this information and ensure its accuracy, we do not give any warranty (whether express or implied), guarantee or representation that it is true, accurate or complete in any respect.

As product information, ingredients, nutritional guides and dietary or allergy advice may change from time to time, we recommend that you always carefully read the product label prior to using or consuming any such products. You should not solely rely upon the information we provide and make your own assessment as to the suitability or otherwise of any given product.



ADDITIVES

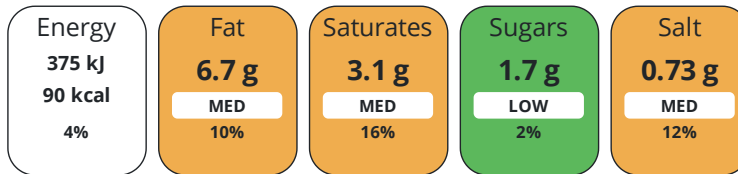
Product Contains:

<b>Artificial Antioxidants</b>	No	<b>Artificial Flavourings</b>	Yes
<b>Artificial Colours</b>	No	<b>Artificial Preservatives</b>	No
<b>Artificial Flavour Enhancers</b>	No	<b>Artificial Sweeteners</b>	No
<b>Suitable for Coeliacs</b>	No	<b>Halal Diet</b>	No
<b>Kosher Diet</b>	No	<b>Vegetarian Diet</b>	No
<b>Vegan Diet</b>	No		

DIET SUITABILITY

NUTRITIONAL INFORMATION

Each 100g/ml portion contains:



of your reference intake.

Typical values per 100g/ml : Energy 90kcal / 375kJ

Nutrient	per 100g/ml	RI per 100g/ml
<b>Energy (kJ)</b>	375 kJ	4%
<b>Energy (kcal)</b>	90 kcal	5%
<b>Fat</b>	6.7 g	10%
of which Saturates	3.1 g	16%
<b>Carbohydrate</b>	2.6 g	1%
of which Sugars	1.7 g	2%
<b>Fibre</b>	0.4 g	
<b>Protein</b>	4 g	8%
<b>Salt</b>	0.73 g	12%
<b>Sodium</b>	292 mg	

SUPPLEMENTARY NUTRITIONAL INFORMATION

HANDLING & STORAGE INFORMATION

**Directions For Use**

For best results cook from frozen. Microwave from Frozen (750-950watt): Pierce or pull back the film and heat for 5mins, leave to stand for 1min, remove the film and heat for a further 5 mins. Microwave from Chilled (750-950watt): Pierce or pull back the film and heat for 3mins, leave to stand for 1min, remove the film and heat for a further 3mins. Oven from Frozen: Pierce the film and heat for 15mins at 180°C Fan/200°C, remove the film and heat for a further 15mins. Oven from Chilled: Pierce the film and heat for 10mins at 160°C Fan/180°C, remove the film and heat for a further 10mins. Ensure product is piping hot throughout before serving.

**Storage Instructions**

Store below -18°C. Once defrosted DO NOT re-freeze. Handle with care.

**Shelf Life from Time of Production** 547 Days

**BRCGS Certified**

ACCREDITATIONS/ CERTIFICATIONS/ ASSURANCE SCHEMES

ORIGIN	<b>Product Country of Origin/Place of Provenance</b> United Kingdom			
	<b>Additional Origin Details</b> Beef & Beef containing ingredients from ROI & UK			
PRODUCT CHARACTERISTICS	Standards Testing			
	<b>Do you undertake trend analysis of microbiological results?</b>	Yes	<b>Is shelf life testing undertaken?</b> Yes	
	Microbiological Standards			
	<b>Organism</b>	<b>Description</b>	<b>Frequency</b> <b>Target</b> <b>Maximum</b> <b>Sample (g or ml)</b>	
	Bacillus Cereus (cfu/g or ml)		Annually <20 100 -	
	Clostridium Perfringens (cfu/g or ml)		Annually <20 100 -	
	E. Coli (cfu/g or ml)		Annually <10 100 -	
	Enterobacteriaceae (cfu/g or ml)		Annually <500 1000 -	
	Listeria SPP (cfu/g or ml)	Absent in 25g	Annually <0 0 25	
	Staphylococcus Aureus (cfu/g or ml)		Annually <20 100 -	
Total Viable Count (TVC) (cfu/g or ml)		Annually <10000 100000 -		
Salmonella (cfu/g or ml)	Absent in 25g	Annually <0 0 25		
CONFIGURATION	Case Configuration		Inner Pack Configuration	
	<b>Total Quantity of Inner Components in Outer Case</b>	12 Units		
PRODUCT WEIGHTS	Inner Component			
	<b>Variable Weight Consumer Item</b>	No		
	<b>Inner Component Weight</b>	400 g		
	Outer Case			
	<b>Outer Case Gross Weight</b>	5.35 kg		
	<b>Outer Case Net Weight</b>	4.8 kg		
PRODUCT DIMENSIONS	Inner Component			
	<b>Inner Component Depth</b>	187 mm		
	<b>Inner Component Width</b>	137 mm		
	<b>Inner Component Height</b>	46 mm		
	Outer Case			
	<b>Outer Case Depth</b>	390 mm		
	<b>Outer Case Width</b>	286 mm		
	<b>Outer Case Height</b>	203 mm		
	PALLET INFORMATION	<b>Quantity of Cases Per Pallet Layer</b>	10 Cases	<b>Pallet Height</b> 1.17 MTR
		<b>Quantity of Layers Per Pallet</b>	5 Layers	<b>Pallet Gross Weight</b> 267.5 kg
<b>Quantity of Cases Per Pallet</b>		50 Cases		
Inner Component Packaging				
<b>Type</b>	<b>Materials</b>	<b>Weight</b>	<b>Recycled Plastic %</b> <b>Recyclable</b> <b>Returnable</b> <b>Composite</b>	
Poly Treated PET/PE	Plastic	255.12 g	- %	

Outer Case Packaging

Type	Materials	Weight	Recycled Plastic %	Recyclable	Returnable	Composite
Case	Plastic	3 g	- %			
Case	Paper/Cardboard	233 g	- %			

Transport Packaging

Type	Materials	Weight	Recycled Plastic %	Recyclable	Returnable	Composite
Other	Plastic	240 g	- %			
Other	Paper/Cardboard	386 g	- %			
Other	Wood	28000 g	- %			

OTHER INFORMATION

**Identification/Health Marks** GB AX028

CONTACT INFORMATION

Address

Wrights Food Group  
Weston Road  
Crewe  
Cheshire  
CW1 6XQ  
England

Technical Contact

Nick Gollins  
Head of Technical  
nick.gollins@compleatfood.com

P: (Phone) 01270 504300

P: (Phone) 01270 504300

Complaints Contact

Maria Bogdan  
Technical Services Administrator  
technicalqueriescrewe@compleatfood.com

Commercial Contact

Sarah Morris  
National Accounts Manager  
sarah.morris@compleatfood.com

P: (Phone) 01270 504300

P: (Phone) 01270 504300

The information on the [Erudus System](#) has been supplied by the manufacturers of the products and, whilst the owners of the Erudus System take steps to ensure the information is regularly updated, they give no warranty and no guarantee that the information is accurate. Product information and ingredients may change, please always read product labels carefully in addition to using the information provided by Erudus.

We do not accept liability for any inaccuracies or incorrect information contained on this site.  
Please visit <http://www.erudus.com/terms-and-conditions> for full terms and conditions.