

09841

# Breaded MSC Haddock Fillets 110 - 140g 24 piece pack count

Battered Haddock Fillet 24x

## PRODUCT DESCRIPTION

Formed skinless, boneless haddock fillet pieces coated in breadcrumb and flash fried 24 x 110-140g

|                                  |                                  |
|----------------------------------|----------------------------------|
| <b>Brand</b>                     | Three Oceans Fish Company        |
| <b>Manufacturer Product Code</b> | MBRH04                           |
| <b>Product Type</b>              | Food                             |
| <b>Product Category</b>          | Seafood - Fish                   |
| <b>Storage Type</b>              | Frozen                           |
| <b>Erudus ID</b>                 | e78530cf52a04da590e1252580d4d1a3 |
| <b>Specification Type</b>        | Legacy                           |



|                             |               |
|-----------------------------|---------------|
| <b>Inner Component GTIN</b> | 5060061300650 |
| <b>Outer Case GTIN</b>      | 5060061300650 |



## INGREDIENTS

### Ingredient Declaration

Haddock (50%) (**FISH**), **WHEAT** Flour (with Calcium, Iron, Niacin, Thiamin), Water, Rapeseed Oil, Maize Starch, Salt, Yeast, Raising Agent (Ammonium Carbonate).

## ALLERGENS

Product Contains:

|   |     |                                      |    |
|---|-----|--------------------------------------|----|
| <b>Celery/Celeriac</b>                      | No  | <b>Mustard</b>                       | No |
| <b>Cereals Containing Gluten</b>            | Yes | <b>Nuts (Tree)</b>                   | No |
| <b>Barley</b>                               | No  | <b>Almond nuts</b>                   | No |
| <b>Oats</b>                                 | No  | <b>Brazil nuts</b>                   | No |
| <b>Rye</b>                                  | No  | <b>Cashew nuts</b>                   | No |
| <b>Wheat (including Spelt and Khorasan)</b> | Yes | <b>Hazelnuts</b>                     | No |
| <b>Gluten content &lt;20ppm</b>             | No  | <b>Macadamia (Queensland) nuts</b>   | No |
| <b>Crustacea</b>                            | No  | <b>Pecan nuts</b>                    | No |
| <b>Eggs</b>                                 | No  | <b>Pistachio nuts</b>                | No |
| <b>Fish</b>                                 | Yes | <b>Walnuts</b>                       | No |
| <b>Lupin</b>                                | No  | <b>Peanuts</b>                       | No |
| <b>Milk</b>                                 | No  | <b>Sesame Seeds</b>                  | No |
| <b>Molluscs</b>                             | No  | <b>Soybeans</b>                      | No |
|   |     | <b>Sulphur Dioxide and Sulphites</b> | No |

### Additional Allergen Information

Allergens in ingredient list are shown in CAPITALS

## SUPPLEMENTARY INGREDIENT INFORMATION

|                                       |    |
|---------------------------------------|----|
| <b>Palm Oil</b>                       | No |
| <b>Hydrogenated Vegetable Oil/Fat</b> | No |
| <b>GM Protein/DNA</b>                 | No |

ADDITIVES

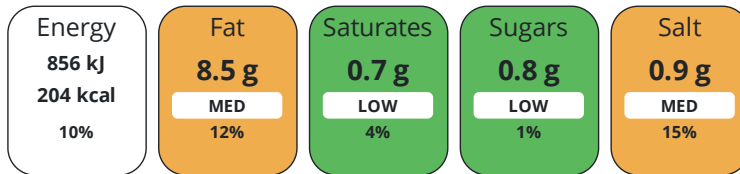
Product Contains:

|                                     |    |                                 |    |
|-------------------------------------|----|---------------------------------|----|
| <b>Artificial Antioxidants</b>      | No | <b>Artificial Flavourings</b>   | No |
| <b>Artificial Colours</b>           | No | <b>Artificial Preservatives</b> | No |
| <b>Artificial Flavour Enhancers</b> | No | <b>Artificial Sweeteners</b>    | No |
| <b>Suitable for Coeliacs</b>        | No | <b>Halal Diet</b>               | No |
| <b>Kosher Diet</b>                  | No | <b>Vegetarian Diet</b>          | No |
| <b>Vegan Diet</b>                   | No |                                 |    |

DIET SUITABILITY

NUTRITIONAL INFORMATION

Each 100g/ml portion contains:



of your reference intake.

Typical values per 100g/ml : Energy 204kcal / 856kj

| Nutrient                  | per 100g/ml | RI per 100g/ml | per 125g/ml serving | RI per 125g/ml serving |
|---------------------------|-------------|----------------|---------------------|------------------------|
| <b>Energy (kJ)</b>        | 856 kJ      | 10%            | 1070 kJ             | 13%                    |
| <b>Energy (kcal)</b>      | 204 kcal    | 10%            | 255 kcal            | 13%                    |
| <b>Fat</b>                | 8.5 g       | 12%            | 10.6 g              | 15%                    |
| <b>of which Saturates</b> | 0.7 g       | 4%             | 0.9 g               | 5%                     |
| <b>Carbohydrate</b>       | 20.3 g      | 8%             | 25.4 g              | 10%                    |
| <b>of which Sugars</b>    | 0.8 g       | 1%             | 1 g                 | 1%                     |
| <b>Fibre</b>              | 1.2 g       |                | 1.5 g               |                        |
| <b>Protein</b>            | 11 g        | 22%            | 13.8 g              | 28%                    |
| <b>Salt</b>               | 0.9 g       | 15%            | 1.1 g               | 18%                    |
| <b>Serving Size</b>       | 125 g       |                |                     |                        |

SUPPLEMENTARY NUTRITIONAL INFORMATION

HANDLING & STORAGE INFORMATION

**Directions For Use**

Deep fry in hot oil at 180C for approximately 4 - 6 minutes. Cook thoroughly until piping hot throughout. Oven Bake: Place on a baking tray in a pre-heated oven at 220C/Gas mark 6, for approximately 18 minutes. Cook thoroughly until piping hot throughout.

**Storage Instructions**

Store frozen product at -18C or colder Do not re-freeze after thawing

**Shelf Life from Time of Production** 547 Days

ACCREDITATIONS/ CERTIFICATIONS/ ASSURANCE SCHEMES ORIGIN

**Marine Stewardship Council (MSC)** **BRCGS Certified**

**Other Accreditation**

**Product Country of Origin/Place of** United Kingdom

**Provenance**

**Additional Origin Details**

N/A

PRODUCT CHARACTERISTICS

Standards Testing

|                    |   |                  |                                    |                           |                   |                   |                  |
|--------------------|---|------------------|------------------------------------|---------------------------|-------------------|-------------------|------------------|
| CONFIGURATION      | Case Configuration                                      |                  | Inner Pack Configuration           |                           |                   |                   |                  |
|                    | <b>Total Quantity of Inner Components in Outer Case</b> | 24 Units         |                                    |                           |                   |                   |                  |
|                    | <b>Is the Outer Case Splittable?</b>                    | No               |                                    |                           |                   |                   |                  |
| PRODUCT WEIGHTS    | Inner Component   |                  |                                    |                           |                   |                   |                  |
|                    | <b>Variable Weight Consumer Item</b>                    | No               |                                    |                           |                   |                   |                  |
|                    | <b>Net Drained Weight</b>                               | 0 kg             |                                    |                           |                   |                   |                  |
|                    | <b>Weight/Volume</b>                                    |                  |                                    |                           |                   |                   |                  |
|                    | N/A   |                  |                                    |                           |                   |                   |                  |
|                    | Outer Case  |                  |                                    |                           |                   |                   |                  |
| PRODUCT DIMENSIONS | <b>Outer Case Gross Weight</b>                          | 3.53 kg          |                                    |                           |                   |                   |                  |
|                    | <b>Outer Case Net Weight</b>                            | 3.36 kg          |                                    |                           |                   |                   |                  |
|                    | Inner Component   |                  |                                    |                           |                   |                   |                  |
|                    | <b>Inner Component Depth</b>                            | 0 mm             |                                    |                           |                   |                   |                  |
|                    | <b>Inner Component Width</b>                            | 0 mm             |                                    |                           |                   |                   |                  |
|                    | <b>Inner Component Height</b>                           | 0 mm             |                                    |                           |                   |                   |                  |
|                    | Outer Case  |                  |                                    |                           |                   |                   |                  |
|                    | <b>Outer Case Depth</b>                                 | 335 mm           |                                    |                           |                   |                   |                  |
|                    | <b>Outer Case Width</b>                                 | 252 mm           |                                    |                           |                   |                   |                  |
| PALLET INFORMATION | <b>Outer Case Height</b>                                | 104 mm           |                                    |                           |                   |                   |                  |
|                    | <b>Quantity of Cases Per Pallet Layer</b>               | 14 Cases         | <b>Pallet Height</b>               | 1.81 MTR                  |                   |                   |                  |
|                    | <b>Quantity of Layers Per Pallet</b>                    | 16 Layers        | <b>Pallet Gross Weight</b>         | 811.1 kg                  |                   |                   |                  |
|                    | <b>Quantity of Cases Per Pallet</b>                     | 224 Cases        |                                    |                           |                   |                   |                  |
|                    | Outer Case Packaging                                    |                  |                                    |                           |                   |                   |                  |
| PACKAGING          | <b>Type</b>   | <b>Materials</b> | <b>Weight</b>                      | <b>Recycled Plastic %</b> | <b>Recyclable</b> | <b>Returnable</b> | <b>Composite</b> |
|                    | Case  | Plastic          | 15 g                               | - %                       |                   |                   |                  |
|                    | Case  | Paper/Cardboard  | 210 g                              | - %                       |                   |                   |                  |
|                    | Transport Packaging                                     |                  |                                    |                           |                   |                   |                  |
|                    | <b>Type</b>   | <b>Materials</b> | <b>Weight</b>                      | <b>Recycled Plastic %</b> | <b>Recyclable</b> | <b>Returnable</b> | <b>Composite</b> |
|                    | Other   | Wood             | 30000 g                            | - %                       |                   |                   |                  |
| OTHER INFORMATION  | <b>Intrastat/Taric Code</b>                             | 0                | <b>Identification/Health Marks</b> | GB HU044                  |                   |                   |                  |

CONTACT  
INFORMATION

Address

Three Oceans Fish Company  
Ocean House  
Witty Street  
Hull  
HU3 4TT  
United Kingdom

P: (Phone) 01482 306000

Complaints Contact

Simon Derrick  
Senior Technical Manager (Compliance)  
sed@3oceans.co.uk

P: (Phone) 01482306000

Technical Contact

Elaine Caizerques  
Head of Technical  
EC@3oceans.co.uk

P: (Phone) 01482 306000 ext 205

Commercial Contact

Dan Martin  
Chief of Sales  
DGM@3oceans.co.uk

P: (Phone) 01482 306000

The information on the [Erudus System](#) has been supplied by the manufacturers of the products and, whilst the owners of the Erudus System take steps to ensure the information is regularly updated, they give no warranty and no guarantee that the information is accurate. Product information and ingredients may change, please always read product labels carefully in addition to using the information provided by Erudus.

We do not accept liability for any inaccuracies or incorrect information contained on this site.  
Please visit <http://www.erudus.com/terms-and-conditions> for full terms and conditions.