

1R2305 - 2305 VEGAN APRICOT CROISSANT RSPO SEGREGATED

GENERAL FEATURES

PRODUCT CODE	1R2305
PRODUCT NAME	VEGAN APRICOT JAM CROISSANT RSPO SG
TYPE OF TASTE	Sweet
PREPARATION METHOD	Ready To Bake
FAMILY	Croissant
RANGE	MADRE vegan
DISTRIBUTION CHANNEL	Business to Business
PRODUCT TIPOLOGY	Naturally preproved product with fresh sourdough
EAN CODE TRADE UNIT (TU)	08003269023058
EAN CODE CONSUMER UNIT (CU)	8003269123055
INTRASTAT CODE	19012000

BRAND



TRADE UNIT (TU) DECLARED NET WEIGHT	5100	g	e
CONSUMER UNIT (CU) DECLARED NET WEIGHT	5100	g	e
LOGISTIC UNIT (LU) NET WEIGHT	368	kg	
PIECE AVERAGE PRODUCTION WEIGHT	88	g	+/- 3

COMPOSITION

	Weight (g)	Tolerance (g) +/-
Dough and topping	73	2
Filling	15	1

STORAGE CONDITIONS

Store at temperatures not above -18 °C. Do not refreeze once defrosted

SHELF LIFE

TOTAL SHELF LIFE (in months)	12
MINIMUM REMAINING SHELF LIFE ON DELIVERY (in months)	3
SECONDARY SHELF LIFE *AT ROOM TEMPERATURE (20-23°)	32 hours
SECONDARY SHELF LIFE * AT +4°C	n/d

Defrosting time not included in case of cooked products. Data were obtained through a feasibility test carried out at the Department for Innovation and Development of the University of Naples Federico II

LEGAL DENOMINATION

Bakery deep-frozen preproved raw product, with FRESH SOURDOUGH CUPIELLO, leavened 26 hours, filled with apricot jam without added flavorings and sprinkled with sugar. FRESH SOURDOUGH CUPIELLO is guarded and refreshed in our CUPIELLO'S MOTHERHOUSE. Product suitable for vegans

Date of creation 10/06/2019

Rev. 00 Of 10/06/2019

Date of print

12/05/2022 16:16:30

Issued by: T.De Rosa, Quality Assurance
Fresystem SPA - Zona Ind.le ASI, Località Pascarola - Caivano, Naples - Italy

INGREDIENTS

Vegetable margarine (vegetable fat (palm), water, vegetable oil (rapeseed, palm, sunflower), emulsifiers: E471, E322, salt, acidifier: E330, E331, natural flavourings, coloring: E160a), natural yeast 21% (contains WHEAT), apricot jam 17% (glucose-fructose syrup (from WHEAT), apricot puree 55%, sugar, thickeners: E440i, lemon juice), fresh sourdough 13,5% (WHEAT flour, water), WHEAT flour, water, sugar 5,5%, salt, WHEAT GLUTEN, glucose syrup, dextrose, natural flavourings, maltodextrins, emulsifiers: E471, E472, fructose, gelling agent: E440, anticaking: E170, WHEAT starch, vegetable fibers, antioxidant: E300, acidifier: E330, enzymes. THE PRODUCT MAY CONTAIN NUTS, SOY, SESAME SEEDS, MUSTARD, MILK AND EGGS

CLAIMS

With certified RSPO segregated palm oil
Suitable for vegans
With fresh MadreCupiello sourdough
With apricots belonging mainly to "Pellecchiella" variety and coming from Vesuvius National Park
Without hydrogenated fats
Genetically Modified Organism free
Without artificial flavours - NAF

PACKAGING AND LOGISTIC

CU	Consumer Unit	Recyclable high density polyethylene (HDPE) bag
	Sold separately	NO
	Pieces per CU	60
	Dimensioni UCP (mm)	Height 500 x Length 295 x Width 100
TU	Trade Unit	Recycled and recyclable carton
	Pieces per TU	60
	TU external size (mm)	Height 230 x Length 392 x Width 262
	1 TU is composed by	1 Recyclable high density polyethylene (HDPE) bag
	Tape	Customized paper tape with range name
	Label	NO
	Accessories	NO
LU	Logistic Unit *	EU/EPAL wood pallet 80x120
	N° TU per 1 LU	72
	LU size (cm)(included pallet height 15cm)	Height 199 x Length 80 x Width 120
	1 LU is made of	8 Layers of 9 cartons each

*Each pallet is wrapped with a PE stretch film and has a label having SSCC-GS1 INDICOD codification

PREPARATION METHOD

Preheat the oven to about 170 °C. Place the product on the baking trays and bake for 23-27 min . To ensure uniform baking, turn the trays in the oven half-way through.

170°C 23-27 min



BAKERY SMEG - UNOX
- POLIN
600x400



BAKERY SMEG - UNOX
435x320



GASTRONORM
1/1
530x320



GASTRONORM
2/1
650x530



SELLING TIPS

COOKED PRODUCT FEATURES

TASTE	Sweet, typical of an oven baked product filled with a creamy apricot filling
APPEARANCE	Curved croissant decorated with sugar
ODOUR	Typical of an oven baked product and apricot
COLOUR	Golden

ALLERGENS EU Reg. 1169/2011 ANNEX II

Cereals containing gluten (i.e. wheat, rye, barley, oats, spelt, kamut or their hybridized strains) and products thereof	YES
Crustaceans and products thereof	NO
Eggs and products thereof	TRACES
Fish and products thereof	NO
Peanuts and products thereof	NO
Soybeans and products thereof	TRACES
Milk and products thereof (including lactose)	TRACES
Nuts, i.e. almond (<i>Amygdalus communis</i> L.), hazelnut (<i>Corylus avellana</i>), Walnut (<i>Juglans regia</i>), Cashew (<i>Anacardium occidentale</i>), Pecan nut (<i>Carya illinoensis</i> [Wangenh.] K. Koch), Brazil nut (<i>Bertholletia excelsa</i>), Pistachio nut (<i>Pistacia vera</i>), Macadamia nut and Queensland nut (<i>Macadamia ternifolia</i>) and products thereof	TRACES
Celery and products thereof	NO
Mustard and products thereof	TRACES
Sesame seeds and products thereof	TRACES
Sulphur dioxide and sulphites at concentrations of more than 10 mg/Kg or 10 mg/litre expressed as SO ₂	NO
Molluscs and products thereof	NO
Lupine and products thereof	NO

GENETICALLY MODIFIED ORGANISM

The product does not contain genetically modified organism and has not been subject to any manipulation or process involving GMO (2006/1829/EC – 2006/1830/EC). The company pursues a GMO-free policy throughout the use of GMO-free raw materials, according to suppliers' feedback.

The product is manufactured in a site where are used ingredients containing: gluten, eggs, soybeans, milk, nuts, sesame seeds, sulphites, peanuts, mustard and/or their derivatives.

NUTRITIONAL TABLE - Average Values

		Per 100g	Per piece
Energy	kJ	1323,5	1125
	kcal	317,2	269,6
Fat	g	18,9	16,1
of wich saturates	g	9,8	8,3
Carbohydrates	g	30,6	26
of wich sugars	g	7,2	6,2
Fibres	g	0,8	0,7
Proteins	g	5,7	4,9
Salt	g	0,6	0,5

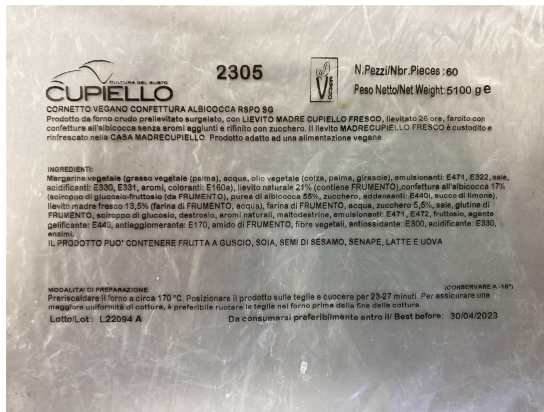
Raw Product Picture



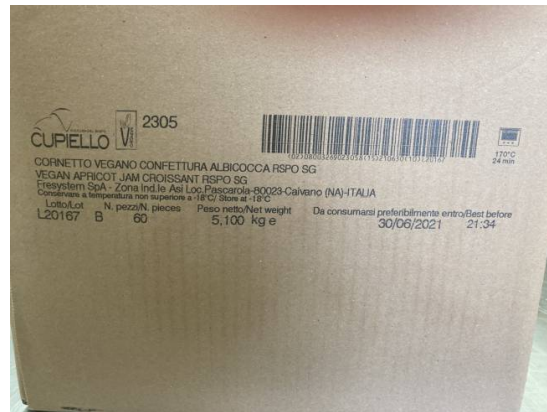
Cooked Product Picture



Bag Picture



Carton Picture



Fresystem spa is responsible for the item in its original sale format, as long as the indications reported on the technical sheet are respected. The subsequent use of the product is customer's responsibility. The company is not responsible for product alterations subsequent to the delivery and due to non-proper managing, storing, handling and/or packing of the item