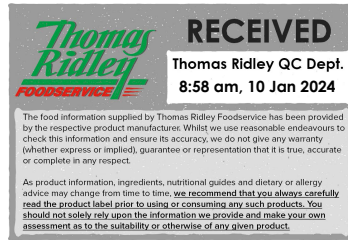


Changed Jan 10, 2024 00:00

Reviewed Jan 09, 2024 15:42

Erudus ID 77e0ec8dad94ad58ec4343073105f30

Version 2.0



Ham & Cheese Panini

Ham & Cheese Panini 12 x 124g

PRODUCT DESCRIPTION

Stone baked panini hand filled with ham topped with a mature cheddar cheese

Brand	Quality Irish Food
Manufacturer Product Code	MRC16614
Effective Date	Jan 9, 2024
Product Type	Food
Product Category	Sandwiches
Storage Type	Frozen
Erudus ID	77e0ec8dad94ad58ec4343073105f30
Specification Type	Generic



Inner Component GTIN	5390634003177
Outer Case GTIN	05390634005287



INGREDIENTS

Ingredient Declaration

Panini [**WHEAT** Flour (**WHEAT** Flour, Calcium Carbonate, Iron, Niacin, Thiamin), Water, Vegetable Oils (Palm, Rapeseed), Sugar, Dried Skimmed **MILK**, Salt, Yeast, Extra Virgin Olive Oil, Semolina **WHEAT**, Emulsifier (Mono- and Di-Glycerides of Fatty Acids), **WHEAT** Gluten, Malted **WHEAT** Flour, Flour Treatment Agent (Ascorbic Acid)], Cooked Ham (24%) [Pork (95%), Salt, Sugar, Pork Protein, Antioxidant (Sodium Ascorbate), Stabilizer (Di-Phosphates), Preservative (Sodium Nitrite)], Mature White **Cheddar Cheese** (18%) (**MILK**).

ALLERGENS

Product Contains:

Celery/Celery	No	Mustard	No
Cereals Containing Gluten	Yes	Nuts (Tree)	No
Barley	No	Almond nuts	No
Oats	No	Brazil nuts	No
Rye	No	Cashew nuts	No
Wheat (including Spelt and Khorasan)	Yes	Hazelnuts	No
Crustacea	No	Macadamia (Queensland) nuts	No
Eggs	No	Pecan nuts	No
Fish	No	Pistachio nuts	No
Lupin	No	Walnuts	No
Milk	Yes	Peanuts	No
Molluscs	No	Sesame Seeds	No
		Soybeans	No
		Sulphur Dioxide and Sulphites	No

SUPPLEMENTARY INGREDIENT INFORMATION

Palm Oil	Yes
Hydrogenated Vegetable Oil/Fat	No
GM Protein/DNA	No

ADDITIVES

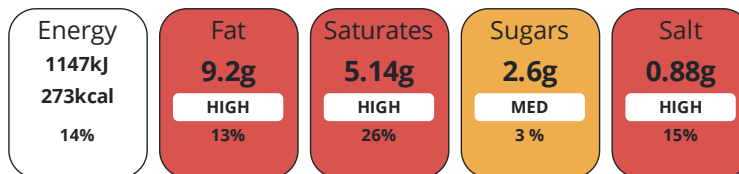
Product Contains:

Artificial Antioxidants	No	Artificial Flavourings	No
Artificial Colours	No	Artificial Preservatives	Yes
Artificial Flavour Enhancers	No	Artificial Sweeteners	No
Vegan Diet	No	Vegetarian Diet	No
Halal Diet	No	Kosher Diet	No

DIET
SUITABILITY

NUTRITIONAL
INFORMATION

Each 100g/ml portion contains:



of your reference intake.

Typical values per 100g/ml : Energy 273kcal / 1147kj

Nutrient	per 100g	RI per 100g	per 124g serving	RI per 124g serving
Energy (kj)	1147 kj	14%	1422.3 kj	17%
Energy (kcal)	273 kcal	14%	338.5 kcal	17%
Fat	9.2 g	13%	11.4 g	16%
of which Saturates	5.14 g	26%	6.4 g	32%
Carbohydrate	33 g	13%	40.9 g	16%
of which Sugars	2.6 g	3%	3.2 g	4%
Fibre	2.7 g		3.3 g	
Protein	16 g	32%	19.8 g	40%
Salt	0.88 g	15%	1.1 g	18%
Serving Size	124 g			

SUPPLEMENTARY
NUTRITIONAL
INFORMATION

HANDLING &
STORAGE
INFORMATION

Directions For Use

Cooking instructions may vary depending on appliance. These instructions are given as a guide only. Please ensure that the product is piping hot and a core product temperature of 75°C throughout before serving. Ready to Cook Product (RTC). OVEN COOK: Preheat Oven to 180°C/350°F / Gas Mark 4. Place Panini in unopened packaging onto a baking tray. Place the baking tray onto the middle shelf of the pre-heated oven. Cook for 17 minutes. Ensure product reaches a minimum 75°C throughout the product before serving. PANINI GRILL: Preheat grill at 180 °C. Place Panini in unopened packaging on the panini grill. Cook for 10 minutes. Ensure product reaches a minimum 75°C throughout the product before serving. MICROWAVE: Place Panini, in unopened packaging onto a microwaveable plate. Microwave at 1000W for 1 minute. Allow to stand prior to consumption. Ensure product reaches a minimum 75°C throughout the product before serving. TURBOCHEF TORNADO HIGH SPEED OVEN: Place Panini, in unopened packaging on a tray. Cook for 50 seconds. Ensure product reaches a minimum 75°C throughout the product before serving. IR setting 500°C Stage 1: Time - 50%, Air -10%, Microwave- 70% Stage 2: Time - 50%, Air -10%, Microwave- 60% MERRYCHEF E3 275°C - Preheat oven to 275°C. Place Muffin in unopened packaging on a tray. Cook for 1 minute 40 seconds. Ensure product reaches a minimum 75°C throughout the product before serving. Fan – High, Microwave -100% 250°C - Preheat oven to 250°C. Place Muffin in unopened packaging on a tray. Cook for 1 minute 40 seconds. Ensure product reaches a minimum 75°C throughout the product before serving. Fan – High, Microwave -100%

Storage Instructions

Keep Frozen <-18 °C To Defrost: Remove product from freezer and place in the fridge. Defrost fully in the fridge at 0-5°C. Once defrosted, do not refreeze. Maximum shelf life from date of defrosting is 3 days, stored at 0-5°C.

Shelf Life from Time of Production	365 Days	Exempt From Shelf Life Labelling	No
---	----------	---	----

ACCREDITATIONS/
CERTIFICATIONS/
ASSURANCE
SCHEMES



ORIGIN

Product Country of Origin/Place of Ireland

Provenance

PRODUCT
CHARACTERISTICS

Standards Testing

Do you undertake trend analysis of microbiological results?	No	Is shelf life testing undertaken?	Yes
--	----	--	-----

Microbiological Standards

Organism	Description	Frequency	Target	Maximum	Sample (g or ml)
Bacillus Cereus (cfu/g or ml)		Monthly	<500	1000	124
E. Coli (cfu/g or ml)		Monthly	<20	100	124
Staphylococcus Aureus (cfu/g or ml)		Monthly	<100	10000	124
Salmonella (cfu/g or ml)		Monthly	<0	0	124

CONFIGURATION

Case Configuration

Inner Pack Configuration

Total Quantity of Inner Components in 12 Units

Outer Case

PRODUCT
WEIGHTS

Inner Component

Variable Weight Consumer Item Yes

Outer Case

Outer Case Gross Weight 1.73 kg

Outer Case Net Weight 1.49 kg

PRODUCT DIMENSIONS

Inner Component	
Inner Component Depth	245 mm
Inner Component Width	45 mm
Inner Component Height	110 mm
Outer Case	
Outer Case Depth	250 mm
Outer Case Width	190 mm
Outer Case Height	200 mm

PALLET INFORMATION

Quantity of Cases Per Pallet Layer	22 Cases	Pallet Height	1.56 MTR
Quantity of Layers Per Pallet	7 Layers	Pallet Gross Weight	295.69 kg
Quantity of Cases Per Pallet	154 Cases		

PACKAGING

Inner Component Packaging						
Type	Materials	Weight	Recycled Plastic %	Recyclable	Returnable	Composite
Paper/Polyethylene	Plastic	5 g	- %			
Outer Case Packaging						
Type	Materials	Weight	Recycled Plastic %	Recyclable	Returnable	Composite
Case	Paper/Cardboard	180 g	- %			
Transport Packaging						
Type	Materials	Weight	Recycled Plastic %	Recyclable	Returnable	Composite
Other	Plastic	500 g	- %			
Other	Paper/Cardboard	1080 g	- %			
Other	Wood	28000 g	- %			

OTHER INFORMATION

Intrastat/Taric Code	1602411010	Identification/Health Marks	IE152EC
-----------------------------	------------	------------------------------------	---------

CONTACT INFORMATION

Address	Technical Contact
Quality Irish Food	Natalia Niespodzianska
Finea, Mullingar, Co. Westmeath, Ireland, N91 H0VH	Specifications Technologist
Mullingar	technical@mrcrumb.ie
Co. Westmeath	
N91 H0VH	<u>P. (Phone)</u> +353436681148
Ireland	
<u>P. (Phone)</u> + 353 (0)43 6681148	

The information on the [Erudus System](#) has been supplied by the manufacturers of the products and, whilst the owners of the Erudus System take steps to ensure the information is regularly updated, they give no warranty and no guarantee that the information is accurate. Product information and ingredients may change, please always read product labels carefully in addition to using the information provided by Erudus.

We do not accept liability for any inaccuracies or incorrect information contained on this site. Please visit <http://www.erudus.com/terms-and-conditions> for full terms and conditions.