


Changed Feb 15, 2024 10:17

Reviewed Feb 15, 2024 10:17

Erudus ID 7673361a824d4447a0db3a680edfaa02

Version 5.0



RECEIVED
Thomas Ridley QC Dept.
3:05 pm, 15 Feb 2024

The food information supplied by Thomas Ridley Foodservice has been provided by the respective product manufacturer. Whilst we use reasonable endeavours to check this information and ensure its accuracy, we do not give any warranty (whether express or implied, guarantee or representation that it is true, accurate or complete in any respect.

As product information, ingredients, nutritional guides and dietary or allergy advice may change from time to time, we recommend that you always carefully read the product label prior to using or consuming any such products. You should not solely rely upon the information we provide and make your own assessment as to the suitability or otherwise of any given product.



The Exploding Bakery Banana Bread (1 x 2050g GROSS - 16 x 121g)

Banana Bread

PRODUCT DESCRIPTION

Chillax in your Banana hammock with a slice from this loaf. Speckled with dots of Colombian chocolate, this vegan loaf cake makes a great breakfast, especially when toasted.

Brand	The Exploding Bakery
Manufacturer Product Code	BAN.B
Manufacturer Version	9
Number	
Product Type	Food
Product Category	Cakes and Tarts
Storage Type	Frozen
Erudus ID	7673361a824d4447a0db3a680edfaa02
Specification Type	Bakery Products



INGREDIENTS

Ingredient Declaration

Plain Flour (**WHEAT**, Calcium Carbonate, Iron, Niacin, Thiamin, Mono Calcium Phosphate, Sodium Bicarbonate), Banana Puree (19%), **SOYA** Milk, Caster Sugar, Rapeseed Oil, Colombian Chocolate (Cocoa Solids 58%, Sugar, Cocoa Butter, Emulsifier; **SOYA** Lecithin, Natural Vanilla Flavouring), Baking Powder (E450, E500, **WHEAT**), Bicarbonate of Soda, Sea Salt.

ALLERGENS

Product Contains:

Celery/Celery	No	Mustard	No
Cereals Containing Gluten	Yes	Nuts (Tree)	No
Barley	No	Almond nuts	No
Oats	No	Brazil nuts	No
Rye	No	Cashew nuts	No
Wheat (including Spelt and Khorasan)	Yes	Hazelnuts	No
Crustacea	No	Macadamia (Queensland) nuts	No
Eggs	No	Pecan nuts	No
Fish	No	Pistachio nuts	No
Lupin	No	Walnuts	No
Milk	No	Peanuts	May Contain
Molluscs	No	Sesame Seeds	May Contain
		Soybeans	Yes
		Sulphur Dioxide and Sulphites	May Contain

Risk Source:

Peanuts (Risk Source)	Factory	Sesame Seeds (Risk Source)	Factory
Sulphur Dioxide and Sulphites (Risk Source)	Factory		

Allergen Statement On Pack

Allergy advice: For allergens, see ingredients in BOLD. May contain peanuts, sesame seeds & sulphur dioxide.

FREE FROM CLAIMS

Free From Eggs	Yes	Free From Nuts	Yes
Free From Milk	Yes		

SUPPLEMENTARY INGREDIENT INFORMATION

Palm Oil	No
GM Protein/DNA	No

ADDITIVES

Product Contains:

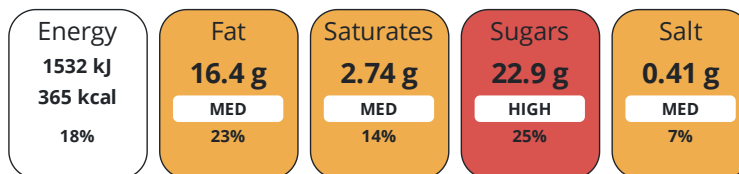
Artificial Antioxidants	No	Artificial Flavourings	No
Artificial Colours	No	Artificial Preservatives	No
Artificial Flavour Enhancers	No	Artificial Sweeteners	No

DIET SUITABILITY

Vegan Diet	Suitable for	Vegetarian Diet	Suitable for
-------------------	--------------	------------------------	--------------

NUTRITIONAL INFORMATION

Each 100g/ml portion contains:



of your reference intake.

Typical values per 100g/ml : Energy 365kcal / 1532kj

Nutrient	per 100g	RI per 100g	per 120g serving	RI per 120g serving
Energy (kJ)	1532 kJ	18%	1838.4 kJ	22%
Energy (kcal)	365 kcal	18%	438 kcal	22%
Fat	16.4 g	23%	19.7 g	28%
of which Saturates	2.74 g	14%	3.3 g	17%
Carbohydrate	52 g	20%	62.4 g	24%
of which Sugars	22.9 g	25%	27.5 g	31%
Fibre	2.5 g		3 g	
Protein	4.3 g	9%	5.2 g	10%
Salt	0.41 g	7%	0.5 g	8%

Serving Size 120 g

SUPPLEMENTARY NUTRITIONAL INFORMATION

HANDLING & STORAGE INFORMATION

Directions For Use

Thaw overnight. Once defrosted store in fridge. Best cut when frozen.

Storage Instructions

Best stored frozen. Once defrosted best stored in fridge in airtight container.

Shelf Life from Time of Production	365 Days	Exempt From Shelf Life Labelling	No
-------------------------------------------	----------	-----------------------------------------	----

ACCREDITATIONS/ CERTIFICATIONS/ ASSURANCE SCHEMES



ORIGIN

Product Country of Origin/Place of Provenance United Kingdom

PRODUCT CHARACTERISTICS	Standards Testing						
	Do you undertake trend analysis of microbiological results?	Yes	Is shelf life testing undertaken?	Yes			
CONFIGURATION	Case Configuration		Inner Pack Configuration				
	Total Quantity of Inner Components in Outer Case	1 Units					
PRODUCT WEIGHTS	Inner Component						
	Variable Weight Consumer Item	Yes					
	Net Drained Weight	1.925 kg					
	Outer Case						
	Outer Case Gross Weight	2.05 kg					
PRODUCT DIMENSIONS	Outer Case						
	Outer Case Net Weight	1.93 kg					
	Inner Component						
	Inner Component Depth	175 mm					
	Inner Component Width	100 mm					
	Inner Component Height	110 mm					
	Outer Case						
	Outer Case Depth	218 mm					
PALLET INFORMATION	Outer Case Width	205 mm					
	Outer Case Height	135 mm					
	Quantity of Cases Per Pallet Layer	20 Cases	Pallet Height	1.8 MTR			
	Quantity of Layers Per Pallet	12 Layers					
	Quantity of Cases Per Pallet	240 Cases					
PACKAGING	Inner Component Packaging						
	Type	Materials	Weight	Recycled Plastic %	Recyclable	Returnable	Composite
	Paper/Polyethylene	Paper/Cardboard	11 g	- %			
	Outer Case Packaging						
	Type	Materials	Weight	Recycled Plastic %	Recyclable	Returnable	Composite
	Case	Paper/Cardboard	184 g	- %			
	Transport Packaging						
	Type	Materials	Weight	Recycled Plastic %	Recyclable	Returnable	Composite
	Other	Plastic	200 g	- %			
	OTHER INFORMATION						

CONTACT
INFORMATION

Address

The Exploding Bakery
4 Otter Court
Manaton Close
Exeter
Devon
EX2 8PF
United Kingdom

~~P. (Phone)~~ 01392829787

Complaints Contact

Jack Streeton
Wholesale Manager
orders@explodingbakery.com

~~P. (Phone)~~ 01392829787

The information on the [Erudus System](#) has been supplied by the manufacturers of the products and, whilst the owners of the Erudus System take steps to ensure the information is regularly updated, they give no warranty and no guarantee that the information is accurate. Product information and ingredients may change, please always read product labels carefully in addition to using the information provided by Erudus.

We do not accept liability for any inaccuracies or incorrect information contained on this site.
Please visit <http://www.erudus.com/terms-and-conditions> for full terms and conditions.