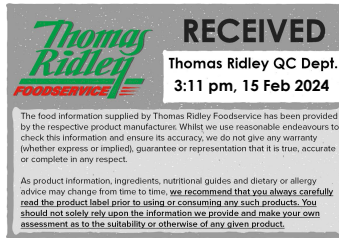


Changed Feb 15, 2024 13:25

Reviewed Feb 15, 2024 13:25

Erudus ID 6494c7cce5554bb78d755a20f36bc0b0

Version 5.0



The Exploding Bakery Lemon Polenta & Pistachio cake (1 x 1950g GROSS - 16 x 112g)

Lemon Polenta

PRODUCT DESCRIPTION

Maybe the best looking one in the gang. This gluten free chap has a side line of modelling as his green pistachios make him extremely photogenic. But beneath the pretty looks there's some serious personality and character. He's sophisticated with a sharp sense of humour. This is a drizzle cake made with fresh lemons and tons of ground almonds.

| | |
|----------------------------------|----------------------------------|
| Brand | The Exploding Bakery |
| Manufacturer Product Code | LMN.P |
| Manufacturer Version | 8 |
| Number | |
| Product Type | Food |
| Product Category | Cakes and Tarts |
| Storage Type | Frozen |
| Erudus ID | 6494c7cce5554bb78d755a20f36bc0b0 |
| Specification Type | Bakery Products |



INGREDIENTS

Ingredient Declaration

Caster Sugar, Ground **ALMONDS (NUTS)**, Salted Butter (**MILK**), Free Range **EGGS**, Lemon Juice (9%), Polenta Coarse (6%), Polenta Maize (3%), **PISTACHIOS (2%) (NUTS)**, Lemon Zest (2%), Vanilla Extract.

ALLERGENS

Product Contains:

| | | | |
|---|-----|--------------------------------------|-------------|
| Celery/Celeryiac | No | Mustard | No |
| Cereals Containing Gluten | No | Nuts (Tree) | Yes |
| Barley | No | Almond nuts | Yes |
| Oats | No | Brazil nuts | No |
| Rye | No | Cashew nuts | No |
| Wheat (including Spelt and Khorasan) | No | Hazelnuts | May Contain |
| Crustacea | No | Macadamia (Queensland) nuts | No |
| Eggs | Yes | Pecan nuts | May Contain |
| Fish | No | Pistachio nuts | Yes |
| Lupin | No | Walnuts | May Contain |
| Milk | Yes | Peanuts | May Contain |
| Molluscs | No | Sesame Seeds | May Contain |
| | | Soybeans | May Contain |
| | | Sulphur Dioxide and Sulphites | May Contain |

Risk Source:

| | | | |
|--|---------|---------------------------------|---------|
| Hazelnuts (Risk Source) | Factory | Pecan nuts (Risk Source) | Factory |
| Walnuts (Risk Source) | Factory | Peanuts (Risk Source) | Factory |
| Sesame Seeds (Risk Source) | Factory | Soybeans (Risk Source) | Factory |
| Sulphur Dioxide and Sulphites (Risk Source) | Factory | | |

Allergen Statement On Pack

Allergy advice: For allergens, see ingredients in BOLD. May contain peanuts, sesame seeds & sulphur dioxide.

Additional Allergen Information

Product contains almonds and pistachios, other nuts held on site.

FREE FROM CLAIMS

| | | | |
|-------------------------|-----|------------------------|-----|
| Free From Barley | Yes | Free From Oats | Yes |
| Gluten-Free | Yes | Free From Rye | Yes |
| | | Free From Wheat | Yes |

SUPPLEMENTARY INGREDIENT INFORMATION

| | |
|---------------------------------------|----|
| Palm Oil | No |
| Hydrogenated Vegetable Oil/Fat | No |
| GM Protein/DNA | No |

ADDITIVES

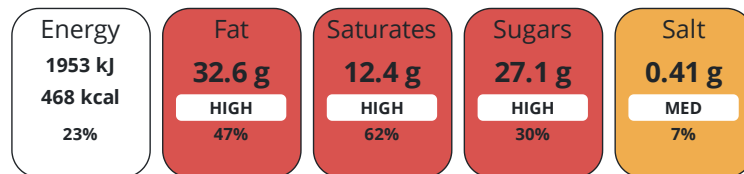
Product Contains:

| | | | |
|-------------------------------------|----|---------------------------------|--------------|
| Artificial Antioxidants | No | Artificial Flavourings | No |
| Artificial Colours | No | Artificial Preservatives | No |
| Artificial Flavour Enhancers | No | Artificial Sweeteners | No |
| Vegan Diet | No | Vegetarian Diet | Suitable for |

DIET SUITABILITY

NUTRITIONAL INFORMATION

Each 100g/ml portion contains:



of your reference intake.

Typical values per 100g/ml : Energy 468kcal / 1953kj

| Nutrient | per 100g | RI per 100g | per 112g serving | RI per 112g serving |
|---------------------------|----------|-------------|------------------|---------------------|
| Energy (kJ) | 1953 kJ | 23% | 2187.4 kJ | 26% |
| Energy (kcal) | 468 kcal | 23% | 524.2 kcal | 26% |
| Fat | 32.6 g | 47% | 36.5 g | 52% |
| of which Saturates | 12.4 g | 62% | 13.9 g | 70% |
| Carbohydrate | 36.6 g | 14% | 41 g | 16% |
| of which Sugars | 27.1 g | 30% | 30.4 g | 34% |
| Fibre | 0.9 g | | 1 g | |
| Protein | 8.3 g | 17% | 9.3 g | 19% |
| Salt | 0.41 g | 7% | 0.5 g | 8% |
| Serving Size | 112 g | | | |

SUPPLEMENTARY NUTRITIONAL INFORMATION

HANDLING & STORAGE INFORMATION

Directions For Use

Thaw overnight. Once defrosted store in fridge. Best cut when frozen.

Storage Instructions

Best stored frozen. Once defrosted best stored in fridge in airtight container.

| | | | |
|---|----------|---|----|
| Shelf Life from Time of Production | 365 Days | Exempt From Shelf Life Labelling | No |
|---|----------|---|----|

ACCREDITATIONS/ CERTIFICATIONS/ ASSURANCE SCHEMES



ORIGIN

| | |
|--|----------------|
| Product Country of Origin/Place of Provenance | United Kingdom |
|--|----------------|

PRODUCT CHARACTERISTICS

| | | | |
|--|-----|--|-----|
| Standards Testing | | | |
| Do you undertake trend analysis of microbiological results? | Yes | Is shelf life testing undertaken? | Yes |

SUPPLEMENTARY INFORMATION

CONFIGURATION

| | | | |
|---|------------|--------------------------|--|
| Egg Source | Free-range | | |
| Case Configuration | | Inner Pack Configuration | |
| Total Quantity of Inner Components in Outer Case | 1 Units | | |

PRODUCT WEIGHTS

| | |
|--------------------------------------|---------|
| Inner Component | |
| Variable Weight Consumer Item | Yes |
| Net Drained Weight | 1.8 kg |
| Outer Case | |
| Outer Case Gross Weight | 1.95 kg |
| Outer Case Net Weight | 1.8 kg |

PRODUCT DIMENSIONS

| | |
|-------------------------------|--------|
| Inner Component | |
| Inner Component Depth | 330 mm |
| Inner Component Width | 220 mm |
| Inner Component Height | 35 mm |
| Outer Case | |
| Outer Case Depth | 342 mm |
| Outer Case Width | 245 mm |
| Outer Case Height | 49 mm |

PALLET INFORMATION

| | | | |
|---|-----------|----------------------|---------|
| Quantity of Cases Per Pallet Layer | 14 Cases | Pallet Height | 1.8 MTR |
| Quantity of Layers Per Pallet | 20 Layers | | |
| Quantity of Cases Per Pallet | 280 Cases | | |

PACKAGING

| Inner Component Packaging | | | | | | |
|---------------------------|-----------------|--------|--------------------|------------|------------|-----------|
| Type | Materials | Weight | Recycled Plastic % | Recyclable | Returnable | Composite |
| Paper/Polyethylene | Paper/Cardboard | 11 g | - % | | | |
| Outer Case Packaging | | | | | | |
| Type | Materials | Weight | Recycled Plastic % | Recyclable | Returnable | Composite |
| Case | Paper/Cardboard | 156 g | - % | | | |

Transport Packaging

| Type | Materials | Weight | Recycled Plastic % | Recyclable | Returnable | Composite |
|-------|-----------|--------|--------------------|------------|------------|-----------|
| Other | Plastic | 200 g | - % | | | |

OTHER
INFORMATION
CONTACT
INFORMATION

Address

The Exploding Bakery
4 Otter Court
Manaton Close
Exeter
Devon
EX2 8PF
United Kingdom

P. (Phone) 01392829787

Complaints Contact

Jack Streeton
Wholesale Manager
orders@explodingbakery.com

P. (Phone) 01392829787

The information on the [Erudus System](#) has been supplied by the manufacturers of the products and, whilst the owners of the Erudus System take steps to ensure the information is regularly updated, they give no warranty and no guarantee that the information is accurate. Product information and ingredients may change, please always read product labels carefully in addition to using the information provided by Erudus.

We do not accept liability for any inaccuracies or incorrect information contained on this site.
Please visit <http://www.erudus.com/terms-and-conditions> for full terms and conditions.