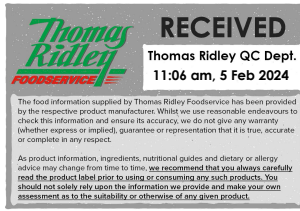


Changed Feb 05, 2024 00:00

Reviewed Jan 16, 2024 14:53

Erudus ID 5c2bd20618ca47b0aec1ebcf74a000a7

Version 2.0



Cawston Press Squeezed Orange Juice 1 litre carton

Squeezed Orange Juice 6x

PRODUCT DESCRIPTION

A smooth orange juice with a fresh, citrus aroma that gives an excellent balance of natural sweetness.

Brand	Cawston Press
Manufacturer Product Code	LTRS113
Effective Date	Jan 16, 2024
Product Type	Drink
Product Category	Juices and Cordials
Storage Type	Ambient
Erudus ID	5c2bd20618ca47b0aec1ebcf74a000a7
Specification Type	Drinks
Inner Component GTIN	5060054131995
Outer Case GTIN	05060054132008



INGREDIENTS

Ingredient Declaration

100% squeezed orange juice (smooth).

New tethered cap - please follow instructions on the top of the carton.

ALLERGENS

Product Contains:

Celery/Celериac	No	Mustard	No
Cereals Containing Gluten	No	Nuts (Tree)	No
Barley	No	Almond nuts	No
Oats	No	Brazil nuts	No
Rye	No	Cashew nuts	No
Wheat (including Spelt and Khorasan)	No	Hazelnuts	No
Crustacea	No	Macadamia (Queensland) nuts	No
Eggs	No	Pecan nuts	No
Fish	No	Pistachio nuts	No
Lupin	No	Walnuts	No
Milk	No	Peanuts	No
Molluscs	No	Sesame Seeds	No
		Soybeans	No
		Sulphur Dioxide and Sulphites	No

SUPPLEMENTARY INGREDIENT INFORMATION

Palm Oil	No
Hydrogenated Vegetable Oil/Fat	No
GM Protein/DNA	No

ADDITIVES

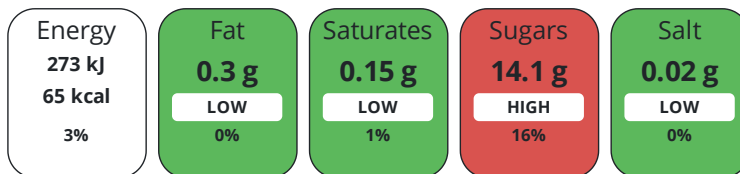
Product Contains:

Artificial Antioxidants	No	Artificial Flavourings	No
Artificial Colours	No	Artificial Preservatives	No
Artificial Flavour Enhancers	No	Artificial Sweeteners	No
Vegan Diet	Suitable for	Vegetarian Diet	Suitable for
Halal Diet	Suitable for	Kosher Diet	Suitable for

DIET SUITABILITY

NUTRITIONAL INFORMATION

Each 150g/ml serving contains:



of your reference intake.

Typical values per 150g/ml : Energy 65kcal / 273kj

Nutrient	per 100ml	RI per 100ml	per 150ml serving	RI per 150ml serving
Energy (kJ)	182 kJ	2%	273 kJ	3%
Energy (kcal)	43 kcal	2%	64.5 kcal	3%
Fat	0.2 g	0%	0.3 g	0%
of which Saturates	< 0.1 g	1%	0.2 g	1%
Carbohydrate	9.4 g	4%	14.1 g	5%
of which Sugars	9.4 g	10%	14.1 g	16%
Fibre	< 0.5 g		0.8 g	
Protein	0.7 g	1%	1.1 g	2%
Salt	< 0.01 g	0%	-	

Serving Size	150 ml
Serving Size Description	A small glass
Number of Servings	6.66 Servings

Source of Nutritional Information Calculation based on known values of ingredients

VITAMINS AND MINERALS

Nutrient	per 100ml	RI per 100ml	per 150ml serving	RI per 150ml serving
Vitamin C	20 mg	25%	30 mg	38%

SUPPLEMENTARY NUTRITIONAL INFORMATION

HFSS (HIGH IN FAT, SALT AND SUGAR)

HFSS Status	No
--------------------	----

HANDLING &
STORAGE
INFORMATION

Directions For Use

Chill and shake well before serving

Storage Instructions

STORE IN A COOL DRY PLACE

Storage Instructions After Opening

ONCE OPENED STORE UPRIGHT IN THE FRIDGE AND CONSUME WITHIN 5 DAYS

Shelf Life from Time of Production	456 Days	Exempt From Shelf Life Labelling	No
Shelf Life From Opening	5 Days		

ACCREDITATIONS/
CERTIFICATIONS/
ASSURANCE
SCHEMES



Other Accreditation

IFS accredited production (BRC equivalent)

ORIGIN

Product Country of Origin/Place of Poland

Provenance

Additional Origin Details

Brazilian orange juice packed in Poland.

PRODUCT
CHARACTERISTICS

Standards Testing

Do you undertake trend analysis of microbiological results?	No	Is shelf life testing undertaken?	No
		Commercially Sterile	Yes

CONFIGURATION

Case Configuration

Inner Pack Configuration

Variable Inner Components in Outer Case	No
Total Quantity of Inner Components in Outer Case	6 Units
Is the Outer Case Splittable?	No

PRODUCT
WEIGHTS

Inner Component

Outer Case

Outer Case Gross Weight	6.6 kg
Outer Case Net Weight	6.25 kg

PRODUCT
DIMENSIONS

Inner Component

Inner Component Depth	75 mm
Inner Component Width	80 mm
Inner Component Height	240 mm

Outer Case

Outer Case Depth	230 mm
Outer Case Width	162 mm
Outer Case Height	249 mm

PALLET
INFORMATION

Quantity of Cases Per Pallet Layer	30 Cases	Pallet Height	1.41 MTR
Quantity of Layers Per Pallet	5 Layers	Pallet Gross Weight	1018 kg
Quantity of Cases Per Pallet	150 Cases		

PACKAGING

Inner Component Packaging

Type	Materials	Weight	Recycled Plastic %	Recyclable	Returnable	Composite
Cap	Plastic / PE (Polyethylene)	3.3 g	0.00 %	Yes	No	No
Carton	Fibre-Based Composite	33 g	- %	Yes	No	No

Outer Case Packaging

Type	Materials	Weight	Recycled Plastic %	Recyclable	Returnable	Composite
Case	Paper/Cardboard / Corrugated	160 g	- %	Yes	No	No

Transport Packaging

Type	Materials	Weight	Recycled Plastic %	Recyclable	Returnable	Composite
Pallet Wrap	Plastic / LDPE (Low Density Polyethylene)	1000 g	0.00 %	Yes	Yes	No
Label	Paper/Cardboard / Paper	2.5 g	- %	Yes	No	No
Pallet	Wood	29000 g	- %	No	Yes	No

OTHER INFORMATION

Intrastat/Taric Code	20091200	Value Added Tax Rate	20%
-----------------------------	----------	-----------------------------	-----

CONTACT INFORMATION

Address	Technical Contact
Cawston Press	Robin Williamson
Cawston Press Ltd.	Technical Manager
Timsons Business Centre, Bath Road	robin@cawstonpress.com
Kettering	
Northamptonshire	<u>P: (Phone)</u> 07717 802 729
NN16 8NQ	
United Kingdom	
<u>P: (Phone)</u> 01536 419 938	
Complaints Contact	Commercial Contact
Robin Williamson	Ben O'Connor
Technical Manager	HEAD OF SALES HOSPITALITY, OOH & TRAVEL
robin@cawstonpress.com	ben@cawstonpress.com
<u>P: (Phone)</u> 07717 802 729	<u>P: (Phone)</u> 07736 957257

The information on the [Erudus System](#) has been supplied by the manufacturers of the products and, whilst the owners of the Erudus System take steps to ensure the information is regularly updated, they give no warranty and no guarantee that the information is accurate. Product information and ingredients may change, please always read product labels carefully in addition to using the information provided by Erudus.

We do not accept liability for any inaccuracies or incorrect information contained on this site.
Please visit <http://www.erudus.com/terms-and-conditions> for full terms and conditions.