

09981

ALMOND CROISSANT SEL DOR

Almond Croissant Sel Dor 48x

PRODUCT DESCRIPTION

Deep frozen unbaked pastry with 19% filling, 0,7% coating and 2,1% topping

Brand	Europastry
Manufacturer Product Code	81195
Product Type	Food
Product Category	Bakery - General
Storage Type	Frozen
Erudus ID	ea0a05d1d27b4fc9b0affd8e09f39971
Specification Type	Legacy

Inner Component GTIN	8424465967326
Outer Case GTIN	8424465811957



INGREDIENTS

Ingredient Declaration

WHEAT flour, vegetable margarine (vegetable fat (palm), vegetable oil (sunflower), water, emulsifiers (E322, E471), salt, acid (E330), natural flavoring, colour (E160a)), water, sugar, **ALMOND** (6,1%), glucose-fructose syrup, **WHEAT** gluten, yeast, modified starch, vegetable oil (sunflower), salt, thickener (E466), flour treatment agent (E300), invert sugar syrup, emulsifiers (E472), **WHEAT** fiber, vegetable proteins, preservative (E202), acid (E334), natural flavouring, dextrose, maltodextrin, starch.

ALLERGENS

Product Contains:

Celery/Celeriac	No	Mustard	No
Cereals Containing Gluten	Yes	Nuts (Tree)	Yes
Barley	No	Almond nuts	Yes
Oats	No	Brazil nuts	No
Rye	May Contain	Cashew nuts	May Contain
Wheat (including Spelt and Khorasan)	Yes	Hazelnuts	May Contain
Gluten content <20ppm	No	Macadamia (Queensland) nuts	No
Crustacea	No	Pecan nuts	No
Eggs	May Contain	Pistachio nuts	May Contain
Fish	No	Walnuts	May Contain
Lupin	No	Peanuts	No
Milk	May Contain	Sesame Seeds	May Contain
Molluscs	No	Soybeans	May Contain
		Sulphur Dioxide and Sulphites	No

Risk Source:

SUPPLEMENTARY INGREDIENT INFORMATION

Palm Oil	Yes
Hydrogenated Vegetable Oil/Fat	No
GM Protein/DNA	No

ADDITIVES

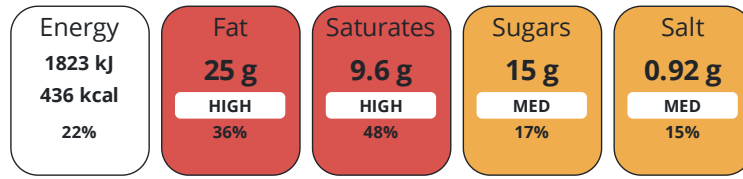
Product Contains:

Artificial Antioxidants	No	Artificial Flavourings	No
Artificial Colours	No	Artificial Preservatives	No
Artificial Flavour Enhancers	No	Artificial Sweeteners	No
Suitable for Coeliacs	No	Halal Diet	Suitable for
Kosher Diet	No	Vegetarian Diet	Suitable for
Vegan Diet	No		

DIET SUITABILITY

NUTRITIONAL INFORMATION

Each 100g/ml portion contains:



of your reference intake.

Typical values per 100g/ml : Energy 436kcal / 1823kj

Nutrient	per 100g/ml	RI per 100g/ml	per 94g/ml serving	RI per 94g/ml serving
Energy (kJ)	1823 kJ	22%	1713.6 kJ	20%
Energy (kcal)	436 kcal	22%	409.8 kcal	20%
Fat	25 g	36%	23.5 g	34%
of which Saturates	9.6 g	48%	9 g	45%
Carbohydrate	45 g	17%	42.3 g	16%
of which Sugars	15 g	17%	14.1 g	16%
Fibre	2.7 g		2.5 g	
Protein	8 g	16%	7.5 g	15%
Salt	0.92 g	15%	0.9 g	15%
Sodium	369 mg		346.9 mg	
Serving Size	94 g			

SUPPLEMENTARY NUTRITIONAL INFORMATION

HANDLING & STORAGE INFORMATION

Directions For Use

Defrost 20 minutes at room temperature. Bake 18 minutes at 170°C.

Storage Instructions

Frozen (-18°C)

Shelf Life from Time of Production 365 Days

ACCREDITATIONS/ CERTIFICATIONS/ ASSURANCE SCHEMES ORIGIN

BRCGS Certified

IFS Food Standard

Roundtable of Sustainable Palm Oil (RSPO)

Product Country of Origin/Place of Provenance Spain

PRODUCT CHARACTERISTICS

Standards Testing

Do you undertake trend analysis of microbiological results? Yes

Is shelf life testing undertaken? Yes

Microbiological Standards

Organism	Description	Frequency	Target	Maximum	Sample (g or ml)
E. Coli (cfu/g or ml)		Annually	<100	100	-
Listeria Monocytogenes (cfu/g or ml)		Annually	<100	100	-
Salmonella (cfu/g or ml)	Not detected/25g	Annually	<0	0	-
Coagulase-positive Staphylococci (cfu/g or ml)		Annually	<100	100	-

Physical Standards

Test	Description	Frequency	Target	Range	Sample (g or ml)
Dimensions Height (mm)		Hourly	=40	39 to 41	-
Dimensions Length (mm)		Hourly	=145	144 to 147	-
Dimensions Width (mm)		Hourly	=60	59 to 62	-

CONFIGURATION

Case Configuration Inner Pack Configuration

Total Quantity of Inner Components in 48 Units

Outer Case

PRODUCT WEIGHTS

Inner Component

Variable Weight Consumer Item No

Weight/Volume

18.5 gr.

Outer Case

Outer Case Gross Weight 4.93 kg

Outer Case Net Weight 4.51 kg

PRODUCT DIMENSIONS

Inner Component

Inner Component Depth 0 mm

Inner Component Width 940 mm

Inner Component Height 0 mm

Outer Case

Outer Case Depth 395 mm

Outer Case Width 289 mm

Outer Case Height 208 mm

PALLET INFORMATION

Quantity of Cases Per Pallet Layer 8 Cases **Pallet Height** 2.02 MTR

Quantity of Layers Per Pallet 9 Layers **Pallet Gross Weight** 3.8 kg

Quantity of Cases Per Pallet 72 Cases

PACKAGING

Inner Component Packaging

Type	Materials	Weight	Recycled Plastic %	Recyclable	Returnable	Composite
Bag	Plastic	18.5 g	- %			

Outer Case Packaging

Type	Materials	Weight	Recycled Plastic %	Recyclable	Returnable	Composite
Case	Paper/Cardboard	390 g	- %			

OTHER INFORMATION

CONTACT
INFORMATION

Address

Europastry
Plaza Xavier Cugat 2, Edificio Planta 4,
Parc Sant Cugat Nord, 08174 Sant Cugat del Vallès
Barcelona
Spain

Technical Contact

Maria Tarin
Export Quality Manager
mtarin@europastry.com

P: (Phone) +34 937001718

Commercial Contact

Zach Fairbanks
UK & Ireland Sales Manager
zfairbanks@europastry.com

P: (Phone) 0)7399 542 804

The information on the [Erudus System](#) has been supplied by the manufacturers of the products and, whilst the owners of the Erudus System take steps to ensure the information is regularly updated, they give no warranty and no guarantee that the information is accurate. Product information and ingredients may change, please always read product labels carefully in addition to using the information provided by Erudus.

We do not accept liability for any inaccuracies or incorrect information contained on this site.
Please visit <http://www.erudus.com/terms-and-conditions> for full terms and conditions.