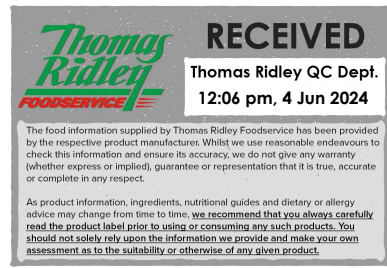


Changed Dec 20, 2021 12:45

Reviewed May 16, 2024 10:44

Erudus ID b45e748caeb244d68382cc1953da279b

Version 1.0



10021

Freshways Whole Milk size 568 ml -125370

Whole Milk 10x

PRODUCT DESCRIPTION

Pasteurised, Homogenised Fresh Milk.

Brand	Freshways (Nijjar property limited)
Manufacturer Product Code	M195397
Product Type	Drink
Product Category	Milk
Storage Type	Chilled
Erudus ID	b45e748caeb244d68382cc1953da279b
Specification Type	Legacy
Inner Component GTIN	5035230100010
Outer Case GTIN	5035230101833



INGREDIENTS

Ingredient Declaration

100% COW'S MILK

ALLERGENS

Product Contains:

Celery/Celериac	No	Mustard	No
Cereals Containing Gluten	No	Nuts (Tree)	No
Barley	No	Almond nuts	No
Oats	No	Brazil nuts	No
Rye	No	Cashew nuts	No
Wheat (including Spelt and Khorasan)	No	Hazelnuts	No
Gluten content <20ppm	Yes	Macadamia (Queensland) nuts	No
Crustacea	No	Pecan nuts	No
Eggs	No	Pistachio nuts	No
Fish	No	Walnuts	No
Lupin	No	Peanuts	No
Milk	Yes	Sesame Seeds	No
Molluscs	No	Soybeans	No
		Sulphur Dioxide and Sulphites	No

Additional Allergen Information

COW'S MILK

SUPPLEMENTARY INGREDIENT INFORMATION

Palm Oil	No	Alcoholic Strength %Vol (ABV)	0 % Vol
Hydrogenated Vegetable Oil/Fat	No		
GM Protein/DNA	No		

ADDITIVES

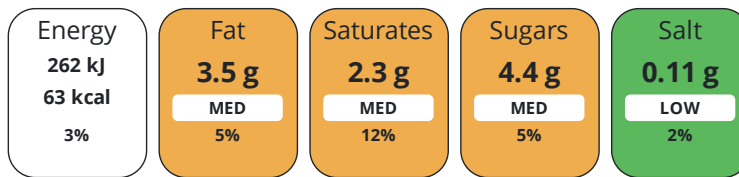
Product Contains:

Artificial Antioxidants	No	Artificial Flavourings	No
Artificial Colours	No	Artificial Preservatives	No
Artificial Flavour Enhancers	No	Artificial Sweeteners	No
Suitable for Coeliacs	Yes	Halal Diet	No
Kosher Diet	No	Vegetarian Diet	Suitable for
Vegan Diet	No		

DIET SUITABILITY

NUTRITIONAL INFORMATION

Each 100g/ml portion contains:



of your reference intake.

Typical values per 100g/ml : Energy 63kcal / 262kj

Nutrient	per 100g/ml	RI per 100g/ml	per 100g/ml serving	RI per 100g/ml serving
Energy (kJ)	262 kJ	3%	262 kJ	3%
Energy (kcal)	63 kcal	3%	63 kcal	3%
Fat	3.5 g	5%	3.5 g	5%
of which Saturates	2.3 g	12%	2.3 g	12%
of which Mono-unsaturates	0.9 g		0.9 g	
of which Polyunsaturates	0.1 g		0.1 g	
Carbohydrate	4.4 g	2%	4.4 g	2%
of which Sugars	4.4 g	5%	4.4 g	5%
of which Polyols	0 g		-	
of which Starch	0 g		-	
Fibre	0 g		-	
Protein	3.4 g	7%	3.4 g	7%
Salt	0.11 g	2%	0.1 g	2%
Sodium	44 mg		44 mg	
Serving Size	100 g			

VITAMINS AND MINERALS

Nutrient	per 100g/ml	RI per 100g/ml	per 100g/ml serving	RI per 100g/ml serving
Vitamin A	35 µg	4%	35 µg	4%
Vitamin C	2 mg	3%	2 mg	3%
Folate/Folic Acid	0 µg	0%	-	
Calcium	122 mg	15%	122 mg	15%
Iron	0 mg	0%	-	
Zinc	0.4 mg	4%	0.4 mg	4%

SUPPLEMENTARY NUTRITIONAL INFORMATION

Cholesterol per 100 g/ml (UK/FR)	13 g
Trans Fats per 100 g/ml	0.1 g

HANDLING &
STORAGE
INFORMATION

Directions For Use

Ready to consume;

Storage Instructions

keep refrigerated below 5oC.

Shelf Life from Time of Production 12 Days

ACCREDITATIONS/
CERTIFICATIONS/
ASSURANCE
SCHEMES
ORIGIN

Red Tractor

BRCGS Certified

Product Country of Origin/Place of United Kingdom

Provenance

Standards Testing

PRODUCT
CHARACTERISTICS

Do you undertake trend analysis of microbiological results? Yes

Is shelf life testing undertaken? Yes

Microbiological Standards

Organism	Description	Frequency	Target	Maximum	Sample (g or ml)
Bacillus Cereus (cfu/g or ml)		Weekly	<2	2	-
Clostridium Perfringens (cfu/g or ml)		Weekly	<10	10	-
Coliforms (cfu/g or ml)		Weekly	<1	1	-
E. Coli (cfu/g or ml)		Weekly	<1	1	-
Enterobacteriaceae (cfu/g or ml)		Daily	<5	5	-
Listeria SPP (cfu/g or ml)		Weekly	<0	0	-
Staphylococcus Aureus (cfu/g or ml)		Weekly	<2	2	-
Total Viable Count (TVC) (cfu/g or ml)		Daily	<1000	10000	-
Salmonella (cfu/g or ml)		Weekly	<0	0	-
Yeast (cfu/g or ml)		Monthly	<2	2	-
Moulds (cfu/g or ml)		Monthly	<2	2	-
Aerobic Colony Count (ACC) (cfu/g or ml)		Daily	=1000	10000	-
Coagulase-positive Staphylococci (cfu/g or ml)		Weekly	<2	2	-

Analytical Standards

Test	Description	Frequency	Target	Range	Sample (g or ml)
Acidity (%)		Every Batch	<0.12	0.12 to 0.16	-

CONFIGURATION

Case Configuration

Inner Pack Configuration

Total Quantity of Inner Components in Outer Case 10 Units

PRODUCT WEIGHTS

Inner Component	
Variable Weight Consumer Item	No
Net Drained Weight	0 kg
Weight/Volume	
0568ML / 0.596 G	
Outer Case	
Outer Case Gross Weight	6.8 kg
Outer Case Net Weight	6.61 kg

PRODUCT DIMENSIONS

Inner Component	
Inner Component Depth	72 mm
Inner Component Width	72 mm
Inner Component Height	162 mm
Outer Case	
Outer Case Depth	144 mm
Outer Case Width	360 mm
Outer Case Height	162 mm

PALLET INFORMATION

Quantity of Cases Per Pallet Layer	22 Cases	Pallet Height	1.16 MTR
Quantity of Layers Per Pallet	6 Layers	Pallet Gross Weight	840 kg
Quantity of Cases Per Pallet	132 Cases		

PACKAGING

Inner Component Packaging						
Type	Materials	Weight	Recycled Plastic %	Recyclable	Returnable	Composite
Bottle	Plastic	19 g	- %			
Outer Case Packaging						
Type	Materials	Weight	Recycled Plastic %	Recyclable	Returnable	Composite
Bottle	Plastic	13 g	- %			
Transport Packaging						
Type	Materials	Weight	Recycled Plastic %	Recyclable	Returnable	Composite
Other	Plastic	230 g	- %			
Other	Paper/Cardboard	2665 g	- %			
Other	Wood	2000 g	- %			

OTHER INFORMATION

Commodity Code	04012091	Identification/Health Marks	GB AG053
-----------------------	----------	------------------------------------	----------

CONTACT INFORMATION

Address
 Freshways (Nijjar property limited)
 16 Eastman Road
 Acton
 London
 W3 7YG
 England

P. (Phone) 0208 746 2046

The information on the [Erudus System](#) has been supplied by the manufacturers of the products and, whilst the owners of the Erudus System take steps to ensure the information is regularly updated, they give no warranty and no guarantee that the information is accurate. Product information and ingredients may change, please always read product labels carefully in addition to using the information provided by Erudus.

We do not accept liability for any inaccuracies or incorrect information contained on this site.
Please visit <http://www.erudus.com/terms-and-conditions> for full terms and conditions.