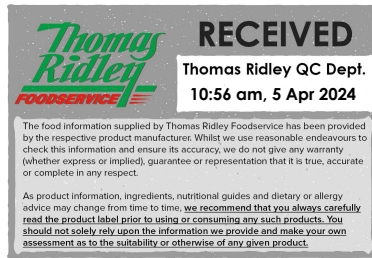


Changed Apr 03, 2024 09:22

Reviewed Apr 03, 2024 09:22

Erudus ID ab8cd16dbb834fb898cb3558680abd48

Version 2.0



**Thomas Ridley**  
FOODSERVICE

**RECEIVED**  
Thomas Ridley QC Dept.  
10:56 am, 5 Apr 2024

The food information supplied by Thomas Ridley Foodservice has been provided by the respective product manufacturer. Whilst we use reasonable endeavours to check this information and ensure its accuracy, we do not give any warranty (whether express or implied), guarantee or representation that it is true, accurate or complete in any respect.

As product information, ingredients, nutritional guides and dietary or allergy advice may change from time to time, we recommend that you always carefully read the product label prior to using or consuming any such products. You should not solely rely upon the information we provide and make your own assessment as to the suitability or otherwise of any given product.



10059

# Cheese Twist

Cheese Twist

## PRODUCT DESCRIPTION

All butter pastry twist with medium fat hard Cheese, vegetarian Emmental and Mustard filling. Product supplied frozen, unbaked.

Brand	Lantmannen Unibake
Manufacturer Product Code	222854
Product Type	Food
Product Category	Other Bakery Products
Storage Type	Frozen
Erudus ID	ab8cd16dbb834fb898cb3558680abd48
Specification Type	Bakery Products



Outer Case GTIN 05038910010647



## INGREDIENTS

### Ingredient Declaration

WHEAT Flour, 19% Butter (MILK), 14% Medium Fat Hard Cheese (MILK), Water, 4% Emmental Cheese (MILK), Sugar, Yeast, 2% MUSTARD (Water, MUSTARD Seeds, Spirit Vinegar, Salt, Turmeric, Natural Herb Flavouring), Potato Starch, BARLEY Malt Extract, Salt, Flour Treatment Agents: E300 (Ascorbic Acid), Enzymes (Alpha-Amylase, Hemicellulase); Rapeseed Oil.

## ALLERGENS

Product Contains:

<b>Celery/Celery</b>	May Contain	<b>Mustard</b>	Yes
<b>Cereals Containing Gluten</b>	Yes	<b>Nuts (Tree)</b>	May Contain
<b>Barley</b>	Yes	<b>Almond nuts</b>	May Contain
<b>Oats</b>	No	<b>Brazil nuts</b>	No
<b>Rye</b>	No	<b>Cashew nuts</b>	No
<b>Wheat (including Spelt and Khorasan)</b>	Yes	<b>Hazelnuts</b>	May Contain
<b>Crustacea</b>	No	<b>Macadamia (Queensland) nuts</b>	No
<b>Eggs</b>	May Contain	<b>Pecan nuts</b>	No
<b>Fish</b>	No	<b>Pistachio nuts</b>	No
<b>Lupin</b>	No	<b>Walnuts</b>	No
<b>Milk</b>	Yes	<b>Peanuts</b>	No
<b>Molluscs</b>	No	<b>Sesame Seeds</b>	May Contain
		<b>Soybeans</b>	May Contain
		<b>Sulphur Dioxide and Sulphites</b>	No

Risk Source:

<b>Celery/Celery (Risk Source)</b>	Raw Material		
<b>Tree Nuts (Risk Source)</b>	Line	<b>Almond nuts (Risk Source)</b>	Line
<b>Hazelnuts (Risk Source)</b>	Line	<b>Sesame Seeds (Risk Source)</b>	Line
<b>Soybeans (Risk Source)</b>	Raw Material		

### Additional Allergen Information

May contain traces of Nuts, Celery, Sesame Seeds, Egg and Soya. Contains Milk, Wheat, Gluten, Mustard.

### SUPPLEMENTARY INGREDIENT INFORMATION

<b>Palm Oil</b>	No
<b>Hydrogenated Vegetable Oil/Fat</b>	No
<b>GM Protein/DNA</b>	No

### ADDITIVES

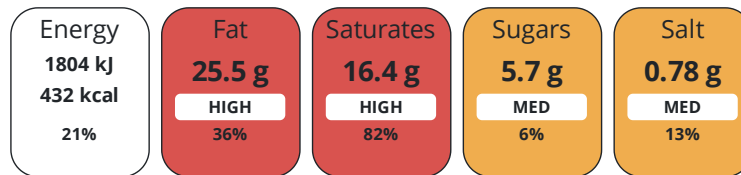
*Product Contains:*

<b>Artificial Antioxidants</b>	Yes	<b>Artificial Flavourings</b>	No
<b>Artificial Colours</b>	No	<b>Artificial Preservatives</b>	No
<b>Artificial Flavour Enhancers</b>	No	<b>Artificial Sweeteners</b>	No
<b>Vegan Diet</b>	No	<b>Vegetarian Diet</b>	Suitable for
<b>Halal Diet</b>	No	<b>Kosher Diet</b>	No

### DIET SUITABILITY

### NUTRITIONAL INFORMATION

Each 100g/ml portion contains:



of your reference intake.

Typical values per 100g/ml : Energy 432kcal / 1804kj

Nutrient	per 100g	RI per 100g	per 78g serving	RI per 78g serving
<b>Energy (kJ)</b>	1804 kJ	21%	1407.1 kJ	17%
<b>Energy (kcal)</b>	432 kcal	22%	337 kcal	17%
<b>Fat</b>	25.5 g	36%	19.9 g	28%
<b>of which Saturates</b>	16.4 g	82%	12.8 g	64%
<b>of which Mono-unsaturates</b>	5.96 g		4.6 g	
<b>of which Polyunsaturates</b>	1.16 g		0.9 g	
<b>Carbohydrate</b>	37.7 g	15%	29.4 g	11%
<b>of which Sugars</b>	5.7 g	6%	4.4 g	5%
<b>Fibre</b>	1.9 g		1.5 g	
<b>Protein</b>	12 g	24%	9.4 g	19%
<b>Salt</b>	0.78 g	13%	0.6 g	10%
<b>Sodium</b>	306 mg		238.7 mg	
<b>Serving Size</b>	78 g			
<b>Serving Size Description</b>	1 twist			
<b>Number of Servings</b>	1 Servings			

**Source of Nutritional Information** Manufacturers analysis

### SUPPLEMENTARY NUTRITIONAL INFORMATION

HANDLING & STORAGE INFORMATION

**Directions For Use**

Bake for 15 minutes at 190°C.

**Storage Instructions**

Keep frozen at -18°C or below.

**Storage Instructions After Opening**

Durability after unsealing the product is 2 days if the bag is resealed. Bake from frozen. Shelf life after baking is 24 hours

<b>Shelf Life from Time of Production</b>	270 Days	<b>Exempt From Shelf Life Labelling</b>	No
<b>Shelf Life From Opening</b>	2 Days		

ACCREDITATIONS/ CERTIFICATIONS/ ASSURANCE SCHEMES ORIGIN

<b>BRCGS Certified</b>		<b>Roundtable of Sustainable Palm Oil (RSPO)</b>	
<b>Other Accreditation</b>			

**Product Country of Origin/Place of** Germany

**Provenance**

**Additional Origin Details**

N/A

PRODUCT CHARACTERISTICS

Standards Testing

<b>Do you undertake trend analysis of microbiological results?</b>	Yes	<b>Is shelf life testing undertaken?</b>	Yes
--------------------------------------------------------------------	-----	------------------------------------------	-----

Microbiological Standards

Organism	Description	Frequency	Target	Maximum	Sample (g or ml)
Bacillus Cereus (cfu/g or ml)		Every 6 months	<10	1000	77
Staphylococcus Aureus (cfu/g or ml)		Every 6 months	<20	1000	77
Salmonella (cfu/g or ml)	25g	Every 6 months	=0	0	77
Yeast (cfu/g or ml)		Every 6 months	<1000	1000	77
Moulds (cfu/g or ml)		Every 6 months	<1000	1000	77
Coliforms (cfu/g or ml)		Every 6 months	<10	10	77
Listeria SPP (cfu/g or ml)	25g	Every 6 months	<0	0	77
Total Viable Count (TVC) (cfu/g or ml)		Every 6 months	<1000	10000	77

Physical Standards

Test	Description	Frequency	Target	Range	Sample (g or ml)
Dimensions Height (mm)	product as supplied	Every Batch	=27	21 to 34	77
Dimensions Width (mm)	product as supplied	Every Batch	=33	27 to 40	77
Weight (g)	product as supplied	Every Batch	=90	78 to 106	77

CONFIGURATION

Case Configuration

Inner Pack Configuration

<b>Total Quantity of Inner Components in Outer Case</b>	1 Units
<b>Is the Outer Case Splittable?</b>	No

PRODUCT WEIGHTS

Inner Component

<b>Variable Weight Consumer Item</b>	Yes
--------------------------------------	-----

Outer Case

<b>Outer Case Gross Weight</b>	4.77 kg
<b>Outer Case Net Weight</b>	4.5 kg

PRODUCT DIMENSIONS

Inner Component	
<b>Inner Component Depth</b>	600 mm
<b>Inner Component Width</b>	420 mm
<b>Inner Component Height</b>	280 mm
Outer Case	
<b>Outer Case Depth</b>	398 mm
<b>Outer Case Width</b>	248 mm
<b>Outer Case Height</b>	180 mm

PALLET INFORMATION

<b>Quantity of Cases Per Pallet Layer</b>	12 Cases	<b>Pallet Height</b>	1.59 MTR
<b>Quantity of Layers Per Pallet</b>	8 Layers	<b>Pallet Gross Weight</b>	484.25 kg
<b>Quantity of Cases Per Pallet</b>	96 Cases		

PACKAGING

Inner Component Packaging						
Type	Materials	Weight	Recycled Plastic %	Recyclable	Returnable	Composite
Bag	Plastic	12.3 g	- %			
Outer Case Packaging						
Type	Materials	Weight	Recycled Plastic %	Recyclable	Returnable	Composite
Case	Plastic	2.2 g	- %			
Case	Paper/Cardboard	255.39 g	- %			
Transport Packaging						
Type	Materials	Weight	Recycled Plastic %	Recyclable	Returnable	Composite
Other	Plastic	400 g	- %			
Other	Paper/Cardboard	1029 g	- %			
Other	Wood	25000 g	- %			

OTHER INFORMATION

**Manufacturer Comments**  
N/A

CONTACT INFORMATION

Address	Technical Contact
Lantmannen Unibake	Inesa Jegoroviene
Maidstone Road	Senior Specifications Technologist
Kingston	inesa.jegoroviene@lantmanen.com
Milton Keynes	
MK10 0BD	
England	P: (Phone) 07885418956
P: (Phone) 07780837112	
Complaints Contact	
Ursula Jaillet	
Technical Coordinator	
ursula.jaillet@lantmannen.com	

The information on the [Erudus System](#) has been supplied by the manufacturers of the products and, whilst the owners of the Erudus System take steps to ensure the information is regularly updated, they give no warranty and no guarantee that the information is accurate. Product information and ingredients may change, please always read product labels carefully in addition to using the information provided by Erudus.

We do not accept liability for any inaccuracies or incorrect information contained on this site.  
Please visit <http://www.erudus.com/terms-and-conditions> for full terms and conditions.