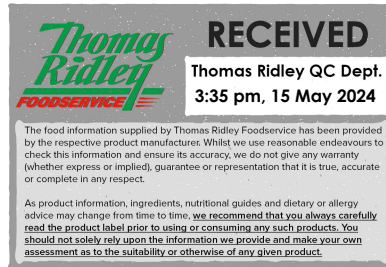


Changed May 15, 2024 11:20  
Reviewed May 15, 2024 11:20  
Erudus ID 0e2aac5c2d2d45ecbf347b5b6d4c762e  
Version 5.1



10073

# TOVALI Traditional BLACKCURRANT CORDIAL 1 LITRE - Sugar Free

Tovali Blackcurrant Cordial 6x1.01kg

## PRODUCT DESCRIPTION WITH SWEETENERS

Brand	Tovali Limited
Manufacturer Product Code	HE
Product Type	Drink
Product Category	Juices and Cordials
Storage Type	Ambient
Erudus ID	0e2aac5c2d2d45ecbf347b5b6d4c762e
Specification Type	Drinks
Inner Component GTIN	5010516003315
Outer Case GTIN	05010516003315



## INGREDIENTS

### Ingredient Declaration

Water, Sugar, Acid (Citric Acid), Natural Colour (Anthocyanin), Acidity Regulator (Tri Sodium Citrate), Flavourings, Intense Sweeteners (Aspartame\*, Sodium Saccharine), Preservatives (Sodium Benzoate, Potassium Sorbate).

### Ingredient Statements

\* CONTAINS A SOURCE OF PHENYLALANINE

## ALLERGENS

Product Contains:

<b>Celery/Celeriac</b>	No
<b>Cereals Containing Gluten</b>	No
<b>Barley</b>	No
<b>Oats</b>	No
<b>Rye</b>	No
<b>Wheat (including Spelt and Khorasan)</b>	No
<b>Crustacea</b>	No
<b>Eggs</b>	No
<b>Fish</b>	No
<b>Lupin</b>	No
<b>Milk</b>	No
<b>Molluscs</b>	No
<b>Mustard</b>	No
<b>Nuts (Tree)</b>	No
<b>Almond nuts</b>	No
<b>Brazil nuts</b>	No
<b>Cashew nuts</b>	No
<b>Hazelnuts</b>	No
<b>Macadamia (Queensland) nuts</b>	No
<b>Pecan nuts</b>	No
<b>Pistachio nuts</b>	No
<b>Walnuts</b>	No
<b>Peanuts</b>	No
<b>Sesame Seeds</b>	No
<b>Soybeans</b>	No
<b>Sulphur Dioxide and Sulphites</b>	No

**Allergen Statement On Pack**

\*Contains a source of PHENYLALANINE

FREE FROM CLAIMS

<b>Free From Barley</b>	Yes
<b>Free From Celery/Celeriac</b>	Yes
<b>Free From Crustacea</b>	Yes
<b>Free From Eggs</b>	Yes
<b>Free From Fish</b>	Yes
<b>Gluten-Free</b>	Yes
<b>Free From Lactose</b>	Yes
<b>Free From Lupin</b>	Yes
<b>Free From Milk</b>	Yes
<b>Free From Molluscs</b>	Yes
<b>Free From Mustard</b>	Yes
<b>Free From Nuts</b>	Yes
<b>Free From Oats</b>	Yes
<b>Free From Peanuts</b>	Yes
<b>Free From Rye</b>	Yes
<b>Free From Sesame</b>	Yes
<b>Free From Soybeans</b>	Yes
<b>Free From Sulphur Dioxide</b>	Yes
<b>Free From Wheat</b>	Yes

SUPPLEMENTARY INGREDIENT INFORMATION

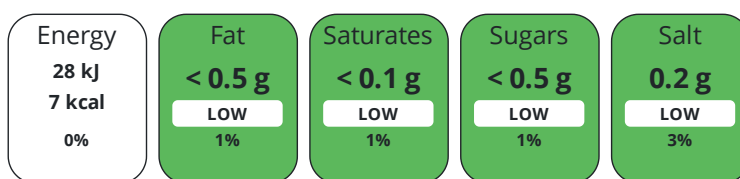
<b>Palm Oil</b>	No
<b>Hydrogenated Vegetable Oil/Fat</b>	No
<b>GM Protein/DNA</b>	No
ADDITIVES	
<i>Product Contains:</i>	
<b>Artificial Antioxidants</b>	No
<b>Artificial Colours</b>	No
<b>Artificial Flavour Enhancers</b>	No
<b>Artificial Flavourings</b>	No
<b>Artificial Preservatives</b>	Yes
<b>Artificial Sweeteners</b>	Yes

DIET SUITABILITY

<b>Vegan Diet</b>	Suitable for	<b>Vegetarian Diet</b>	Suitable for
<b>Halal Diet</b>	No	<b>Kosher Diet</b>	No

NUTRITIONAL INFORMATION

Each 100g/ml portion contains:



of your reference intake.

Typical values per 100g/ml : Energy 7kcal / 28kj

Nutrient	per 100ml	RI per 100ml	per 100ml serving	RI per 100ml serving	per 500ml of prepared product
<b>Energy (kJ)</b>	28 kJ	0%	28 kJ	0%	-
<b>Energy (kcal)</b>	7 kcal	0%	7 kcal	0%	-
<b>Fat</b>	< 0.5 g	1%	0.5 g	1%	-
<b>of which Saturates</b>	< 0.1 g	1%	0.1 g	1%	-
<b>of which Mono-unsaturates</b>	0 g	-	-	-	-
<b>of which Polyunsaturates</b>	0 g	-	-	-	-
<b>Carbohydrate</b>	< 0.5 g	0%	0.5 g	0%	-
<b>of which Sugars</b>	< 0.5 g	1%	0.5 g	1%	-
<b>of which Polyols</b>	0 g	-	-	-	-
<b>of which Starch</b>	0 g	-	-	-	-
<b>Fibre</b>	0 g	-	-	-	-
<b>Protein</b>	0.1 g	0%	0.1 g	0%	-
<b>Salt</b>	0.2 g	3%	0.2 g	3%	-
<b>Sodium</b>	0 mg	-	-	-	-

Prepared Product Details

A 100ml serving makes approximately 500 ml drink.

<b>Serving Size</b>	100 ml
---------------------	--------

<b>Source of Nutritional Information</b>	Calculation based on known values of ingredients
--	--

VITAMINS AND MINERALS

Nutrient	per 100ml	RI per 100ml	per 100ml serving	RI per 100ml serving	per 500ml of prepared product
Vitamin A	0 µg	0%	-	-	-
Vitamin C	0 mg	0%	-	-	-
Folate/Folic Acid	0 µg	0%	-	-	-
Calcium	0 mg	0%	-	-	-
Iron	0 mg	0%	-	-	-
Zinc	0 mg	0%	-	-	-

SUPPLEMENTARY NUTRITIONAL INFORMATION

Cholesterol per 100 g/ml (UK/FR)	0 g
Trans Fats per 100 g/ml	0 g
Fat Percentage in Dry Matter per 100 g/ml	0 %
Non Milk Extrinsic Sugars per 100 g/ml	0 g

HFSS (HIGH IN FAT, SALT AND SUGAR)

HFSS Status	No
-------------	----

HANDLING & STORAGE INFORMATION

Directions For Use

SHAKE WELL BEFORE USE Dilute 1 part to 4 parts water or to taste. If for toddlers add extra water.

Storage Instructions

KEEP COOL. OUT OF SUNLIGHT

Shelf Life from Time of Production	547 Days
Exempt From Shelf Life Labelling	No

ACCREDITATIONS/ CERTIFICATIONS/ ASSURANCE SCHEMES

ISO 14001 (Environmental Management)	SALSA (Safe & Local Supplier Approval)
Other Accreditation	

ORIGIN

Product Country of Origin/Place of Provenance	United Kingdom
---	----------------

PRODUCT CHARACTERISTICS

Standards Testing

Do you undertake trend analysis of microbiological results?	Yes
Is shelf life testing undertaken?	Yes
Commercially Sterile	No

Microbiological Standards

Organism	Description	Frequency	Target	Maximum	Sample (g or ml)
Aerobic Colony Count (ACC) (cfu/g or ml)		Every 6 months	=0	200	1000

Analytical Standards

Test	Description	Frequency	Target	Range	Sample (g or ml)
Brix (°Bx)		Every Batch	=2.0	1.98 to 2.02	100
pH		Every Batch	=3.19	3.13 to 3.25	100
Acidity (%)		Every Batch	=0	0 to 0	100

Physical Standards

Test	Description	Frequency	Target	Range	Sample (g or ml)
Weight (g)		Hourly	=1000	0 to 0	1000

#### CONFIGURATION

##### Case Configuration

<b>Total Quantity of Inner Components in Outer Case</b>	6 Units
---	---------

<b>Is the Outer Case Splittable?</b>	Yes
--------------------------------------	-----

##### Inner Pack Configuration

<b>Count per Inner Component</b>	6
----------------------------------	---

#### PRODUCT WEIGHTS

##### Inner Component

<b>Inner Component Weight</b>	1.01 kg
-------------------------------	---------

<b>Inner Component Volume</b>	1 litre
-------------------------------	---------

<b>Net Drained Weight</b>	0.35 g
---------------------------	--------

##### Outer Case

<b>Outer Case Gross Weight</b>	6.4 kg
--------------------------------	--------

<b>Outer Case Net Weight</b>	6 kg
------------------------------	------

#### PRODUCT DIMENSIONS

##### Inner Component

<b>Inner Component Depth</b>	84 mm
------------------------------	-------

<b>Inner Component Width</b>	84 mm
------------------------------	-------

<b>Inner Component Height</b>	270 mm
-------------------------------	--------

<b>Inner Component Diameter</b>	84 mm
---------------------------------	-------

##### Outer Case

<b>Outer Case Depth</b>	252 mm
-------------------------	--------

<b>Outer Case Width</b>	168 mm
-------------------------	--------

<b>Outer Case Height</b>	270 mm
--------------------------	--------

#### PALLET INFORMATION

<b>Quantity of Cases Per Pallet Layer</b>	28 Cases
---	----------

<b>Quantity of Layers Per Pallet</b>	4 Layers
--------------------------------------	----------

<b>Quantity of Cases Per Pallet</b>	112 Cases
-------------------------------------	-----------

<b>Pallet Height</b>	1.2 MTR
----------------------	---------

<b>Pallet Gross Weight</b>	720 kg
----------------------------	--------

#### PACKAGING

##### Inner Component Packaging

Type	Materials	Weight	Recycled Plastic %	Recyclable	Returnable	Composite
Bottle	Plastic / PET (Polyethylene Terephthalate)	35 g	30 %	Yes	No	No
Cap	Plastic / HDPE (High Density Polyethylene)	2 g	- %	No	No	
Label	Paper/Cardboard / Paper	1 g	- %	Yes	No	No

##### Outer Case Packaging

Type	Materials	Weight	Recycled Plastic %	Recyclable	Returnable	Composite
Shrink Wrap	Plastic / LDPE (Low Density Polyethylene)	15 g	30 %	Yes	No	No
Label	Paper/Cardboard / Paper	1 g	- %	Yes	No	No

Transport Packaging

Type	Materials	Weight	Recycled Plastic %	Recyclable	Returnable	Composite
Pallet Wrap	Plastic / LDPE (Low Density Polyethylene)	280 g	30 %	Yes	No	No
Layer Card	Paper/Cardboard / Cardboard	772 g	- %	Yes	No	No
Pallet	Wood	2800 g	- %	Yes	Yes	No

OTHER INFORMATION

<b>Commodity Code</b>	22021000
<b>Value Added Tax Rate</b>	20%

CONTACT INFORMATION

Address

Tovali Limited  
 Tovali Works  
 Glanyrafon Road  
 Carmarthen  
 Carmarthenshire  
 SA31 3AR  
 United Kingdom

P: (Phone) 01267 237331

Technical Contact

Mr Eurwyn Harries  
 Director  
 cynthia@tovali.co.uk

P: (Phone) 01267237331

Complaints Contact

Cynthia Davies  
 Secretary  
 sales@tovali.co.uk

P: (Phone) 01267237331

Commercial Contact

Mr Eurwyn Harries  
 Director  
 sales@tovali.co.uk

P: (Phone) 01267237331

The information on the [Erudus System](#) has been supplied by the manufacturers of the products and, whilst the owners of the Erudus System take steps to ensure the information is regularly updated, they give no warranty and no guarantee that the information is accurate. Product information and ingredients may change, please always read product labels carefully in addition to using the information provided by Erudus.

We do not accept liability for any inaccuracies or incorrect information contained on this site.  
 Please visit <http://www.erudus.com/terms-and-conditions> for full terms and conditions.