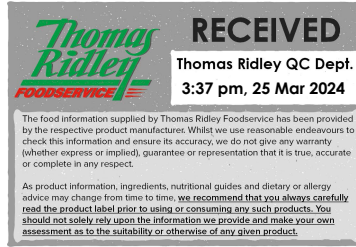


Changed Mar 25, 2024 11:32

Reviewed Mar 25, 2024 11:32

Erudus ID 31cb6b7dc5d843558753ae849f3b3754

Version 4.0



Wenlock Spring Still 330ml PET

Still Spring Water 24x330g

PRODUCT DESCRIPTION

Still Spring Water

Brand	Wenlock Spring Water
Manufacturer Product Code	1028
Effective Date	Mar 25, 2024
Product Type	Drink
Product Category	Juices and Cordials
Storage Type	Chilled
Erudus ID	31cb6b7dc5d843558753ae849f3b3754
Specification Type	Drinks
Inner Component GTIN	5018730000400
Outer Case GTIN	05018730000424

INGREDIENTS

Ingredient Declaration

Wenlock Spring Water

ALLERGENS

Product Contains:

Celery/Celeriac	No	Mustard	No
Cereals Containing Gluten	No	Nuts (Tree)	No
Barley	No	Almond nuts	No
Oats	No	Brazil nuts	No
Rye	No	Cashew nuts	No
Wheat (including Spelt and Khorasan)	No	Hazelnuts	No
Crustacea	No	Macadamia (Queensland) nuts	No
Eggs	No	Pecan nuts	No
Fish	No	Pistachio nuts	No
Lupin	No	Walnuts	No
Milk	No	Peanuts	No
Molluscs	No	Sesame Seeds	No
		Soybeans	No
		Sulphur Dioxide and Sulphites	No

SUPPLEMENTARY INGREDIENT INFORMATION

Palm Oil	No
Hydrogenated Vegetable Oil/Fat	No
GM Protein/DNA	No

ADDITIVES

Product Contains:

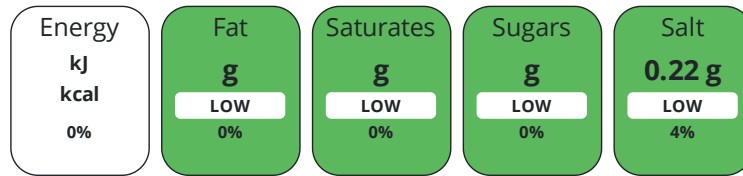
Artificial Antioxidants	No	Artificial Flavourings	No
Artificial Colours	No	Artificial Preservatives	No
Artificial Flavour Enhancers	No	Artificial Sweeteners	No

DIET SUITABILITY

Vegan Diet	No	Vegetarian Diet	No
Halal Diet	No	Kosher Diet	No

NUTRITIONAL
INFORMATION

Each 100g/ml portion contains:



of your reference intake.

Typical values per 100g/ml : Energy kcal / kj

Nutrient	per 100ml	RI per 100ml
Energy (kJ)	0 kJ	0%
Energy (kcal)	0 kcal	0%
Fat	0 g	0%
of which Saturates	0 g	0%
of which Mono-unsaturates	0 g	
of which Polyunsaturates	0 g	
Carbohydrate	0 g	0%
of which Sugars	0 g	0%
of which Polyols	0 g	
of which Starch	0 g	
Fibre	0 g	
Protein	0 g	0%
Salt	0.22 g	4%
Sodium	220 mg	

VITAMINS AND
MINERALS

Nutrient	per 100ml	RI per 100ml
Vitamin A	0 µg	0%
Vitamin C	0 mg	0%
Folate/Folic Acid	0 µg	0%
Calcium	0.86 mg	0%
Iron	0 mg	0%
Zinc	0 mg	0%

SUPPLEMENTARY
NUTRITIONAL
INFORMATION

Cholesterol per 100 g/ml (UK/FR)	0 g
Trans Fats per 100 g/ml	0 g
Fat Percentage in Dry Matter per 100 g/ml	0 %
Non Milk Extrinsic Sugars per 100 g/ml	0 g

HFSS (HIGH IN
FAT, SALT AND
SUGAR)
HANDLING &
STORAGE
INFORMATION

HFSS Status	No
-------------	----

Directions For Use

Best Served Chilled

Storage Instructions

Store in a clean, cool, dry place away from sunlight, strong odours and chemicals

Shelf Life from Time of Production	730 Days	Exempt From Shelf Life Labelling	No
------------------------------------	----------	----------------------------------	----

ACCREDITATIONS/
CERTIFICATIONS/
ASSURANCE
SCHEMES
ORIGIN

BRCGS Certified

Product Country of Origin/Place of United Kingdom

Provenance

PRODUCT
CHARACTERISTICS

Standards Testing

Do you undertake trend analysis of microbiological results? Yes **Is shelf life testing undertaken?** Yes

Microbiological Standards

Organism	Description	Frequency	Target	Maximum	Sample (g or ml)
Coliforms (cfu/g or ml)		Daily	=0	0	250
E. Coli (cfu/g or ml)		Daily	=0	0	250
Total Viable Count (TVC) (cfu/g or ml)	37°C / no abnormal change	Monthly	=0	20	1

Analytical Standards

Test	Description	Frequency	Target	Range	Sample (g or ml)
pH		Daily	=7.5	7.2 to 7.9	100

CONFIGURATION

Case Configuration

Inner Pack Configuration

Total Quantity of Inner Components in 24 Units

Outer Case

Is the Outer Case Splittable? No

PRODUCT
WEIGHTS

Inner Component

Inner Component Weight 330 g

Outer Case

Outer Case Gross Weight 8.53 kg

Outer Case Net Weight 7.92 kg

PRODUCT
DIMENSIONS

Inner Component

Inner Component Depth 64 mm

Inner Component Width 64 mm

Inner Component Height 155 mm

Outer Case

Outer Case Depth 372 mm

Outer Case Width 248 mm

Outer Case Height 149 mm

PALLET
INFORMATION

Quantity of Cases Per Pallet Layer 13 Cases **Pallet Height** 1.49 MTR

Quantity of Layers Per Pallet 9 Layers **Pallet Gross Weight** 1022 kg

Quantity of Cases Per Pallet 117 Cases

PACKAGING

Inner Component Packaging

Type	Materials	Weight	Recycled Plastic %	Recyclable	Returnable	Composite
Bottle	Plastic / PET (Polyethylene Terethphalate)	12.7 g	30 %			
Cap	Plastic	2.9 g	0 %			
Label	Plastic	3 g	30 %			

Outer Case Packaging

Type	Materials	Weight	Recycled Plastic %	Recyclable	Returnable	Composite
Case	Plastic	22.9 g	30 %			
Label	Paper/Cardboard	0.3 g	- %			

Transport Packaging

Type	Materials	Weight	Recycled Plastic %	Recyclable	Returnable	Composite
Pallet Wrap	Plastic	266 g	30 %			
Layer Card	Paper/Cardboard	285.8 g	- %	Yes		
Label	Plastic	2.6 g	- %			
Pallet	Wood	20000 g	- %			

OTHER INFORMATION

Commodity Code 2202100000

CONTACT INFORMATION

Address	Technical Contact
Wenlock Spring Water	Flavius Ion
Wolverton	Quality Manager
Church Stretton	flaviusion@wenlockspring.co.uk
Shropshire	
SY6 6RR	<u>P: (Phone)</u> 01694731206
United Kingdom	

P: (Phone) 01694 781277

Complaints Contact

Flavius Ion
 Quality Manager
 flaviusion@wenlockspring.co.uk

P: (Phone) 01694731206

The information on the [Erudus System](#) has been supplied by the manufacturers of the products and, whilst the owners of the Erudus System take steps to ensure the information is regularly updated, they give no warranty and no guarantee that the information is accurate. Product information and ingredients may change, please always read product labels carefully in addition to using the information provided by Erudus.

We do not accept liability for any inaccuracies or incorrect information contained on this site.
 Please visit <http://www.erudus.com/terms-and-conditions> for full terms and conditions.