


Changed Mar 08, 2024 13:02

Reviewed Mar 08, 2024 13:02

Erudus ID 54d02ab015224c74b28c9a13a6ba58d9

Version 2.0



RECEIVED
Thomas Ridley QC Dept.
3:11 pm, 8 Mar 2024

The food information supplied by Thomas Ridley Foodservice has been provided by the respective product manufacturer. Whilst we use reasonable endeavours to check this information and ensure its accuracy, we do not give any warranty (whether express or implied), guarantee or representation that it is true, accurate or complete in any respect.

As product information, ingredients, nutritional guides and dietary or allergy advice may change from time to time, we recommend that you always carefully read the product label prior to using or consuming any such products. You should not solely rely upon the information we provide and make your own assessment as to the suitability or otherwise of any given product.



10223

Wenlock Spring Still 500ml PET

Still Spring Water 24x500g

PRODUCT DESCRIPTION

Still Spring water

Brand	Wenlock Spring Water
Manufacturer Product Code	1007
Effective Date	Mar 8, 2024
Product Type	Drink
Product Category	Juices and Cordials
Storage Type	Ambient
Erudus ID	54d02ab015224c74b28c9a13a6ba58d9
Specification Type	Drinks
Inner Component GTIN	5018730000066
Outer Case GTIN	05018730000141



INGREDIENTS

Ingredient Declaration

Wenlock Sping water

ALLERGENS

Product Contains:

Celery/Celeriac	No	Mustard	No
Cereals Containing Gluten	No	Nuts (Tree)	No
Barley	No	Almond nuts	No
Oats	No	Brazil nuts	No
Rye	No	Cashew nuts	No
Wheat (including Spelt and Khorasan)	No	Hazelnuts	No
Crustacea	No	Macadamia (Queensland) nuts	No
Eggs	No	Pecan nuts	No
Fish	No	Pistachio nuts	No
Lupin	No	Walnuts	No
Milk	No	Peanuts	No
Molluscs	No	Sesame Seeds	No
		Soybeans	No
		Sulphur Dioxide and Sulphites	No
Palm Oil	No		
Hydrogenated Vegetable Oil/Fat	No		
GM Protein/DNA	No		

SUPPLEMENTARY INGREDIENT INFORMATION

ADDITIVES

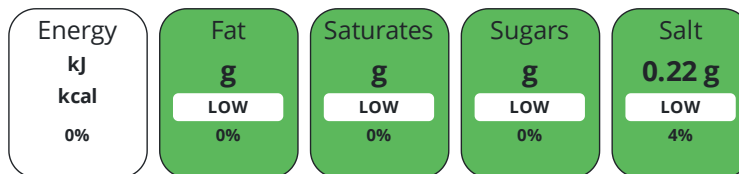
Product Contains:

Artificial Antioxidants	No	Artificial Flavourings	No
Artificial Colours	No	Artificial Preservatives	No
Artificial Flavour Enhancers	No	Artificial Sweeteners	No
Vegan Diet	Suitable for	Vegetarian Diet	Suitable for
Halal Diet	No	Kosher Diet	No

DIET
SUITABILITY

NUTRITIONAL
INFORMATION

Each 100g/ml portion contains:



of your reference intake.

Typical values per 100g/ml : Energy kcal / kj

Nutrient	per 100ml	RI per 100ml
Energy (kj)	0 kj	0%
Energy (kcal)	0 kcal	0%
Fat	0 g	0%
of which Saturates	0 g	0%
of which Mono-unsaturates	0 g	
of which Polyunsaturates	0 g	
Carbohydrate	0 g	0%
of which Sugars	0 g	0%
of which Polyols	0 g	
of which Starch	0 g	
Fibre	0 g	
Protein	0 g	0%
Salt	0.22 g	4%
Sodium	220 mg	

VITAMINS AND
MINERALS

Nutrient	per 100ml	RI per 100ml
Vitamin A	0 µg	0%
Vitamin C	0 mg	0%
Folate/Folic Acid	0 µg	0%
Calcium	0.86 mg	0%
Iron	0 mg	0%
Zinc	0 mg	0%

SUPPLEMENTARY
NUTRITIONAL
INFORMATION

Cholesterol per 100 g/ml (UK/FR)	0 g
Trans Fats per 100 g/ml	0 g
Fat Percentage in Dry Matter per 100 g/ml	0 %
Non Milk Extrinsic Sugars per 100 g/ml	0 g

HFSS (HIGH IN FAT, SALT AND SUGAR) HANDLING & STORAGE INFORMATION

HFSS Status	No
Directions For Use	Best served chilled
Storage Instructions	Store in a clean cool dry place away from sunlight, strong odours and chemicals
Shelf Life from Time of Production	730 Days
Exempt From Shelf Life Labelling	No

ACCREDITATIONS/ CERTIFICATIONS/ ASSURANCE SCHEMES



ORIGIN

Product Country of Origin/Place of Provenance	United Kingdom
--	----------------

PRODUCT CHARACTERISTICS

Standards Testing	
Do you undertake trend analysis of microbiological results?	Yes
Is shelf life testing undertaken?	Yes

Microbiological Standards					
Organism	Description	Frequency	Target	Maximum	Sample (g or ml)
Coliforms (cfu/g or ml)		Daily	=0	0	250
E. Coli (cfu/g or ml)		Daily	=0	0	250
Total Viable Count (TVC) (cfu/g or ml)	37°C / no abnormal change	Monthly	=0	20	1

Analytical Standards					
Test	Description	Frequency	Target	Range	Sample (g or ml)
pH		Daily	=7.5	7.2 to 7.7	100

CONFIGURATION

Case Configuration	Inner Pack Configuration
Total Quantity of Inner Components in Outer Case	24 Units
Is the Outer Case Splittable?	No

PRODUCT WEIGHTS

Inner Component	
Inner Component Weight	500 g
Outer Case	
Outer Case Gross Weight	12.72 kg
Outer Case Net Weight	12 kg

PRODUCT DIMENSIONS

Inner Component	
Inner Component Depth	62 mm
Inner Component Width	62 mm
Inner Component Height	214 mm
Outer Case	
Outer Case Depth	372 mm
Outer Case Width	248 mm
Outer Case Height	216 mm

PALLET INFORMATION

Quantity of Cases Per Pallet Layer	13 Cases	Pallet Height	1.45 MTR
Quantity of Layers Per Pallet	6 Layers	Pallet Gross Weight	1017 kg
Quantity of Cases Per Pallet	78 Cases		

PACKAGING

Inner Component Packaging

Type	Materials	Weight	Recycled Plastic %	Recyclable	Returnable	Composite
Bottle	Plastic / PET (Polyethylene Terethphalate)	13.5 g	30 %			
Cap	Plastic / HDPE (High Density Polyethylene)	2.9 g	- %			
Label	Plastic	3 g	- %			

Outer Case Packaging

Type	Materials	Weight	Recycled Plastic %	Recyclable	Returnable	Composite
Case	Plastic	27.5 g	- %			
Label	Paper/Cardboard	0.3 g	- %			

Transport Packaging

Type	Materials	Weight	Recycled Plastic %	Recyclable	Returnable	Composite
Layer Card	Paper/Cardboard	1714 g	- %			
Label	Paper/Cardboard	2.6 g	- %			
Pallet Wrap	Plastic	266 g	30 %			
Pallet	Wood	20000 g	- %			

OTHER INFORMATION

Commodity Code	2202100000
-----------------------	------------

CONTACT INFORMATION

Address	Technical Contact
Wenlock Spring Water	Flavius Ion
Wolverton	Quality Manager
Church Stretton	flaviusion@wenlockspring.co.uk
Shropshire	
SY6 6RR	P: (Phone) 01694731206
United Kingdom	

P: (Phone) 01694 781277

Complaints Contact

Flavius Ion
Quality Manager
flaviusion@wenlockspring.co.uk

P: (Phone) 01694731206

The information on the [Erudus System](#) has been supplied by the manufacturers of the products and, whilst the owners of the Erudus System take steps to ensure the information is regularly updated, they give no warranty and no guarantee that the information is accurate. Product information and ingredients may change, please always read product labels carefully in addition to using the information provided by Erudus.

We do not accept liability for any inaccuracies or incorrect information contained on this site. Please visit <http://www.erudus.com/terms-and-conditions> for full terms and conditions.