

Changed Mar 04, 2024 10:34

Reviewed Mar 04, 2024 10:34

Erudus ID 7d5210e1efa745679108a8632efd68aa

Version 2.0

10231

Whitby Wholetail Scampi 8*200g

Wholetail Scampi 8x200g

PRODUCT DESCRIPTION

Whole scampi (Langoustine) tails in a crisp, golden crumb. With added water. Made with one or more tails per piece.

Brand	Whitby Seafoods Ltd
Manufacturer Product Code	1262
Effective Date	Mar 4, 2024
Product Type	Food
Product Category	Prawns, Shrimp & Scampi
Storage Type	Frozen
Erudus ID	7d5210e1efa745679108a8632efd68aa
Specification Type	Fish and Seafood
Inner Component GTIN	5016316012625
Outer Case GTIN	05016316912628



INGREDIENTS

Ingredient Declaration

Scampi (CRUSTACEANS) (40%), Breadcrumbs (Wheat Flour [WHEAT Flour, Calcium Carbonate, Iron, Niacin, Thiamin], Rapeseed Oil, Yeast, Dextrose, Salt), Batter (Water, Wheat flour [WHEAT Flour, Calcium Carbonate, Iron, Niacin, Thiamin], Wheat starch, Salt, Colour: E160c). Water, Rapeseed Oil, Stabilisers: E339, E451, E452.

ALLERGENS

Product Contains:


Celery/Celeriac	No	Mustard	No
Cereals Containing Gluten	Yes	Nuts (Tree)	No
Barley	No	Almond nuts	No
Oats	No	Brazil nuts	No
Rye	No	Cashew nuts	No
Wheat (including Spelt and Khorasan)	Yes	Hazelnuts	No
Crustacea	Yes	Macadamia (Queensland) nuts	No
Eggs	No	Pecan nuts	No
Fish	May Contain	Pistachio nuts	No
Lupin	No	Walnuts	No
Milk	No	Peanuts	No
Molluscs	May Contain	Sesame Seeds	No
		Soybeans	No
		Sulphur Dioxide and Sulphites	No

Risk Source:

Fish (Risk Source)	Factory	Molluscs (Risk Source)	Factory
---------------------------	---------	-------------------------------	---------

Allergen Statement On Pack

For allergens including cereals containing GLUTEN please see ingredients in BOLD. May contain FISH and MOLLUSCS.



RECEIVED
Thomas Ridley QC Dept.
1:53 pm, 4 Mar 2024

The food information supplied by Thomas Ridley Foodservice has been provided by the respective product manufacturer. Whilst we use reasonable endeavours to check this information and ensure its accuracy, we do not give any warranty (whether express or implied), guarantee or representation that it is true, accurate or complete in any respect.

As product information, ingredients, nutritional guides and dietary or allergy advice may change from time to time, we recommend that you always carefully read the product label prior to using or consuming any such products. You should not solely rely upon the information we provide and make your own assessment as to the suitability or otherwise of any given product.



SUPPLEMENTARY
INGREDIENT
INFORMATION

Palm Oil	No
Hydrogenated Vegetable Oil/Fat	No
GM Protein/DNA	No

ADDITIVES

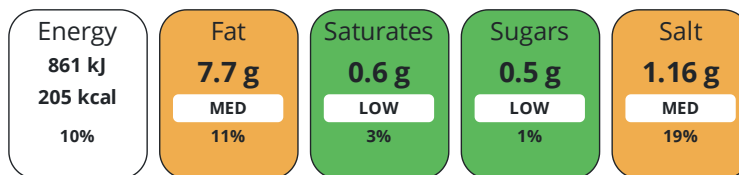
Product Contains:

Artificial Antioxidants	No	Artificial Flavourings	No
Artificial Colours	No	Artificial Preservatives	No
Artificial Flavour Enhancers	No	Artificial Sweeteners	No
Halal Diet	No	Kosher Diet	No

DIET
SUITABILITY

NUTRITIONAL
INFORMATION

Each 100g/ml portion contains:



of your reference intake.

Typical values per 100g/ml : Energy 205kcal / 861kJ

Nutrient	per 100g	RI per 100g	per 100g serving	RI per 100g serving
Energy (kJ)	861 kJ	10%	861 kJ	10%
Energy (kcal)	205 kcal	10%	205 kcal	10%
Fat	7.7 g	11%	7.7 g	11%
of which Saturates	0.6 g	3%	0.6 g	3%
Carbohydrate	22.7 g	9%	22.7 g	9%
of which Sugars	0.5 g	1%	0.5 g	1%
Fibre	2.4 g		2.4 g	
Protein	10.1 g	20%	10.1 g	20%
Salt	1.16 g	19%	1.2 g	20%
Serving Size	100 g			

SUPPLEMENTARY
NUTRITIONAL
INFORMATION

HFSS (HIGH IN
FAT, SALT AND
SUGAR)
HANDLING &
STORAGE
INFORMATION

HFSS Status	No
--------------------	----

Directions For Use

Always cook from frozen. The instructions below are just a guide; do make sure our scampi is piping hot throughout before serving. Once cooled please don't reheat. Oven Bake: 18 mins Pre-heat oven to 220°C/200°C, fan/gas mark 7. Remove all packaging and place the scampi on a preheated baking tray in the centre of the oven . Baking for 18 mins, turning halfway through cooking, until crisp and golden. Tuck in. Deep Fry: 4 mins Remove all packaging and place the scampi into hot oil 180°C. Cook from frozen for 4 mins until crisp and golden. Drain on kitchen paper before serving. Scoff before someone else does.

Storage Instructions

Keep in the freezer and polish off by the best before date, please don't refreeze.

Shelf Life from Time of Production	547 Days	Exempt From Shelf Life Labelling	No
---	----------	---	----

ORIGIN	Catch Zone	27 - Atlantic, Northeast					
PRODUCT CHARACTERISTICS	Standards Testing						
	Do you undertake trend analysis of microbiological results?	Yes	Is shelf life testing undertaken?		Yes		
	Microbiological Standards						
	Organism	Description	Frequency	Target	Maximum	Sample (g or ml)	
	Coliforms (cfu/g or ml)		Annually	<1000	10000	100	
	E. Coli (cfu/g or ml)		Annually	<10	10	100	
	Total Viable Count (TVC) (cfu/g or ml)		Annually	<100000	1000000	100	
	Salmonella (cfu/g or ml)		Annually	<0	0	25	
	Coagulase-positive Staphylococci (cfu/g or ml)		Annually	<10	100	100	
CONFIGURATION	Case Configuration	Inner Pack Configuration					
	Total Quantity of Inner Components in Outer Case	8 Units					
	Is the Outer Case Splittable?	No					
PRODUCT WEIGHTS	Inner Component						
	Variable Weight Consumer Item	No					
	Inner Component Weight	200 g					
	Outer Case						
	Outer Case Gross Weight	1.76 kg					
	Outer Case Net Weight	1.6 kg					
PRODUCT DIMENSIONS	Inner Component						
	Inner Component Depth	220 mm					
	Inner Component Width	220 mm					
	Inner Component Height	190 mm					
	Outer Case						
	Outer Case Depth	300 mm					
	Outer Case Width	200 mm					
	Outer Case Height	100 mm					
PALLET INFORMATION	Quantity of Cases Per Pallet Layer	20 Cases	Pallet Height		1.66 MTR		
	Quantity of Layers Per Pallet	15 Layers	Pallet Gross Weight		556.9 kg		
	Quantity of Cases Per Pallet	300 Cases					
PACKAGING	Inner Component Packaging						
	Type	Materials	Weight	Recycled Plastic %	Recyclable	Returnable	Composite
	PE Laminated Paper Bag	Plastic	6 g	- %			

Outer Case Packaging

Type	Materials	Weight	Recycled Plastic %	Recyclable	Returnable	Composite
Case	Paper/Cardboard	122 g	- %			

Transport Packaging

Type	Materials	Weight	Recycled Plastic %	Recyclable	Returnable	Composite
Other	Plastic	115 g	- %		Yes	
Other	Wood	28000 g	- %		Yes	

OTHER INFORMATION

Intrastat/Taric Code	Identification/Health Marks
1605400020	GB YK 006

Manufacturer Comments

Amount in Bag: 13 (+/- 2)

CONTACT INFORMATION

Address

Whitby Seafoods Ltd
 Fairfield way
 Whitby Business park
 Whitby
 North Yorkshire
 YO22 4PU
 England

P: (Phone) 01947 829193

Complaints Contact

Neve Saltmarsh
 Technical Services Coordinator
 neve.saltmarsh@whitby-seafoods.com

The information on the [Erudus System](#) has been supplied by the manufacturers of the products and, whilst the owners of the Erudus System take steps to ensure the information is regularly updated, they give no warranty and no guarantee that the information is accurate. Product information and ingredients may change, please always read product labels carefully in addition to using the information provided by Erudus.

We do not accept liability for any inaccuracies or incorrect information contained on this site. Please visit <http://www.erudus.com/terms-and-conditions> for full terms and conditions.