

Changed Feb 29, 2024 11:41

Reviewed Feb 29, 2024 11:41

Erudus ID 2c7ecc13f59e42eb9030f2d813ed439b

Version 2.0

10260

# Lamb Weston

Lamb Weston Stealth Fries 9x9 4x2.5kg 4x2.5kg

## PRODUCT DESCRIPTION

Pre-fried - Deep-frozen clearcoated potato fries

Brand	Lamb Weston Meijer
Manufacturer Product Code	S04 (120039)
Product Type	Food
Product Category	Potato Products
Storage Type	Frozen
Erudus ID	2c7ecc13f59e42eb9030f2d813ed439b
Specification Type	Generic



Inner Component GTIN	8711571019040
Outer Case GTIN	8711571019057



## INGREDIENTS

### Ingredient Declaration

Potatoes (83%), Coating (14%) [Modified potato starch, Rice flour, Salt, Raising agents (E450i, E500ii), Potato Starch, Dextrose, Thickener (E415), Spice extract]. Vegetable oils (rapeseed, sunflower, in varying proportions) (3%),

## ALLERGENS

Product Contains:

<b>Celery/Celeriac</b>	No	<b>Mustard</b>	No
<b>Cereals Containing Gluten</b>	No	<b>Nuts (Tree)</b>	No
<b>Barley</b>	No	<b>Almond nuts</b>	No
<b>Oats</b>	No	<b>Brazil nuts</b>	No
<b>Rye</b>	No	<b>Cashew nuts</b>	No
<b>Wheat (including Spelt and Khorasan)</b>	No	<b>Hazelnuts</b>	No
<b>Crustacea</b>	No	<b>Macadamia (Queensland) nuts</b>	No
<b>Eggs</b>	No	<b>Pecan nuts</b>	No
<b>Fish</b>	No	<b>Pistachio nuts</b>	No
<b>Lupin</b>	No	<b>Walnuts</b>	No
<b>Milk</b>	No	<b>Peanuts</b>	No
<b>Molluscs</b>	No	<b>Sesame Seeds</b>	No
		<b>Soybeans</b>	No
		<b>Sulphur Dioxide and Sulphites</b>	No

## SUPPLEMENTARY INGREDIENT INFORMATION

<b>Palm Oil</b>	No
<b>Hydrogenated Vegetable Oil/Fat</b>	No
<b>GM Protein/DNA</b>	No



ADDITIVES

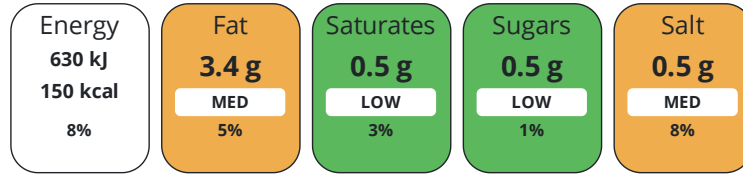
Product Contains:

<b>Artificial Antioxidants</b>	No	<b>Artificial Flavourings</b>	No
<b>Artificial Colours</b>	No	<b>Artificial Preservatives</b>	No
<b>Artificial Flavour Enhancers</b>	No	<b>Artificial Sweeteners</b>	No
<b>Vegan Diet</b>	Suitable for	<b>Vegetarian Diet</b>	Suitable for
<b>Halal Diet</b>	Suitable for	<b>Kosher Diet</b>	No

DIET  
SUITABILITY

NUTRITIONAL  
INFORMATION

Each 100g/ml portion contains:



of your reference intake.

Typical values per 100g/ml : Energy 150kcal / 630kj

Nutrient	per 100g	RI per 100g	per 100g serving	RI per 100g serving
<b>Energy (kJ)</b>	630 kJ	8%	630 kJ	8%
<b>Energy (kcal)</b>	150 kcal	8%	150 kcal	8%
<b>Fat</b>	3.4 g	5%	3.4 g	5%
<b>of which Saturates</b>	0.5 g	3%	0.5 g	3%
<b>Carbohydrate</b>	25 g	10%	25 g	10%
<b>of which Sugars</b>	< 0.5 g	1%	0.5 g	1%
<b>Fibre</b>	3.9 g		3.9 g	
<b>Protein</b>	2.4 g	5%	2.4 g	5%
<b>Salt</b>	0.5 g	8%	0.5 g	8%
<b>Serving Size</b>	100 g			

SUPPLEMENTARY  
NUTRITIONAL  
INFORMATION

HANDLING &  
STORAGE  
INFORMATION

**Directions For Use**

Fryer: Fry for 3:15 min. at 175°C. Fry or bake products until crispy. Oven: Cook for 15 - 20 min. at 200°C. Turn product halfway cooking time. Cook from frozen. Do not overcook.

**Storage Instructions**

Deep-frozen (-18°C) for 18 months Do not refreeze once thawed.

<b>Shelf Life from Time of Production</b>	548 Days	<b>Exempt From Shelf Life Labelling</b>	No
---	----------	---	----

ACCREDITATIONS/  
CERTIFICATIONS/  
ASSURANCE  
SCHEMES



**Other Accreditation**

-

## ORIGIN

Product Country of Origin/Place of United Kingdom

## Provenance

## Additional Origin Details

-

## PRODUCT CHARACTERISTICS

Standards Testing

Do you undertake trend analysis of microbiological results? Yes

Is shelf life testing undertaken? Yes

## Microbiological Standards

Organism	Description	Frequency	Target	Maximum	Sample (g or ml)
Bacillus Cereus (cfu/g or ml)	1 bag of finished product	Monthly	<100	100	2500
Coliforms (cfu/g or ml)	1 bag of finished product	Monthly	<100	100	2500
E. Coli (cfu/g or ml)	1 bag of finished product	Monthly	<10	10	2500
Staphylococcus Aureus (cfu/g or ml)	1 bag of finished product	Monthly	<100	100	2500
Salmonella (cfu/g or ml)	1 bag of finished product	Monthly	=0	0	2500
Aerobic Colony Count (ACC) (cfu/g or ml)	1 bag of finished product	Monthly	<100000	100000	2500
Listeria Monocytogenes (cfu/g or ml)	1 bag of finished product	Monthly	<100	100	2500
Yeast (cfu/g or ml)	1 bag of finished product	Monthly	<1000	1000	2500
Moulds (cfu/g or ml)	1 bag of finished product	Monthly	<1000	1000	2500

## Physical Standards

Test	Description	Frequency	Target	Range	Sample (g or ml)
Chip Length < 25mm (max by weight) (%)	Frozen, by count	Hourly	=1	0 to 3	2500
Chip Length < 50mm (max by weight) (%)	Frozen, by count	Hourly	=30	0 to 38	2500
Chip Length < 75mm (max by weight) (%)	Frozen, by count	Hourly	<70	0 to 70	2500
Colour AGTRON	Cooked	Hourly	=66	60 to 70	680
Defects Gross diameter > 12mm pieces per (500g) (pieces per)	Frozen	Hourly	=0	0 to 0	2500
Defects Gross diameter 6-12mm pieces per (500g) (pieces per)	Frozen	Hourly	=4	0 to 6	2500
Defects Gross diameter 3-6mm pieces per (500g) (pieces per)	Frozen	Hourly	<18	0 to 18	2500
Slivers (Max) (500g) (pieces per)	Frozen	Hourly	=1	0 to 3	2500

## CONFIGURATION

Case Configuration

Inner Pack Configuration

Total Quantity of Inner Components in Outer Case 4 Units

Is the Outer Case Splittable? Yes

PRODUCT WEIGHTS

Inner Component	
<b>Variable Weight Consumer Item</b>	No
<b>Inner Component Weight</b>	2.5 kg
Outer Case	
<b>Outer Case Gross Weight</b>	10.35 kg
<b>Outer Case Net Weight</b>	10 kg

PRODUCT DIMENSIONS

Inner Component	
<b>Inner Component Depth</b>	420 mm
<b>Inner Component Width</b>	338 mm
<b>Inner Component Height</b>	58 mm
Outer Case	
<b>Outer Case Depth</b>	385 mm
<b>Outer Case Width</b>	250 mm
<b>Outer Case Height</b>	230 mm

PALLET INFORMATION

<b>Quantity of Cases Per Pallet Layer</b>	12 Cases	<b>Pallet Height</b>	1.6 MTR
<b>Quantity of Layers Per Pallet</b>	6 Layers	<b>Pallet Gross Weight</b>	770 kg
<b>Quantity of Cases Per Pallet</b>	72 Cases		

PACKAGING

Inner Component Packaging						
Type	Materials	Weight	Recycled Plastic %	Recyclable	Returnable	Composite
Bag	Plastic	11 g	- %			
Outer Case Packaging						
Type	Materials	Weight	Recycled Plastic %	Recyclable	Returnable	Composite
Case	Paper/Cardboard	300 g	- %			
Transport Packaging						
Type	Materials	Weight	Recycled Plastic %	Recyclable	Returnable	Composite
Other	Plastic	260 g	- %			
Other	Wood	25000 g	- %			

OTHER INFORMATION

<b>Intrastat/Taric Code</b>	20041010
-----------------------------	----------

**Manufacturer Comments**

The Delivery Lead Time is 5 workdays from the NL to the UK and 4 workdays from UK to UK.

CONTACT INFORMATION

Address  
 Lamb Weston Meijer  
 Stationweg 18a  
 Postbus 17  
 Kruiningen  
 4416 ZG  
 Netherlands (the)

P: (Phone) +31 113 394 955

The information on the [Erudus System](#) has been supplied by the manufacturers of the products and, whilst the owners of the Erudus System take steps to ensure the information is regularly updated, they give no warranty and no guarantee that the information is accurate. Product information and ingredients may change, please always read product labels carefully in addition to using the information provided by Erudus.

We do not accept liability for any inaccuracies or incorrect information contained on this site.  
Please visit <http://www.erudus.com/terms-and-conditions> for full terms and conditions.