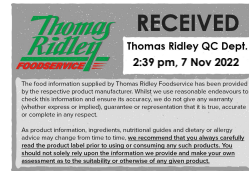


Supplier's Product Code : 5021
 Product Added : 15 March 2022
 Last Updated by Supplier : 06 April 2022
 erudus id : 101b6d2f5c554c859f882611129532a1



The information on the Erudus System has been supplied by the manufacturers of the products and, whilst the owners of the Erudus System take steps to ensure the information is regularly updated, they give no warranty and no guarantee that the information is accurate. Product information and ingredients may change, please always read product labels carefully in addition to using the information provided by Erudus One.

We do not accept liability for any inaccuracies or incorrect information contained on this site. Please visit <http://www.erudus.com/terms-and-conditions> for full terms and conditions.

LoveRaw Cre&m Wafer Bar - White Choc 45g

Short Product Name:
 Cre&m Wafer Bar - White Choc

Product Description:
 Picture this, a crunchy wafer loaded with fluffy hazelnut and almond Cre&m®, smothered in a thick layer of vegan white chocolate. Pure indulgence. Next-level satisfaction.

General Information

Food/Drink :	Food
Product Category :	Ambient
Generic Product Type :	Confectionery

Supplier's Product Code :
 5021
Supplier: LoveRaw
 Station House
 Floor 3
 Altrincham
 Cheshire
 WA14 1EP
 United Kingdom
 P: 0161 222 0940

OUTER PRODUCT

Outer case Information

Outer Case GTIN :	5060462260706
Packaging Type Description :	Case
Total Quantity of Inner Units in Outer Case :	16 Units
Is Trade Item Splittable? :	Yes

Outer Case Length :	410 mm
Outer Case Width :	285 mm
Outer Case Height :	385 mm
Product Gross Weight :	9.20 kg
Product Net Weight :	9.20 kg

Pallet Information

Quantity of Cases Per Pallet Layer :	144 Cases
Quantity of Layers Per Pallet :	5 Layers
Quantity of Cases Per Pallet :	720 Cases

Pallet Height :	2.10 MTR
Pallet Gross Weight :	292.00 kg

Logistical Information

Shelf Life from Time of Production :	365 Days
Guaranteed Shelf Life on Delivery :	270 Days

Minimum Order Quantity :	Not specified.
Delivery Lead Time :	5 Days

Waste Packaging Weight - Outer Case

Glass :	0.00 g
Plastic :	0.00 g
Percentage Recycled Plastic :	50.00 %
Paper/Board :	210.00 g

Aluminium :	0.00 g
Steel :	0.00 g
Other :	0.00 g

Waste Packaging Weight - Transport Packaging

Plastic :	120.00 g
Paper/Board :	320.00 g
Percentage Recycled Plastic :	Not specified.

Wood Total :	Not specified.
Is Pallet Returnable? :	-

Other Information

Supplier Comments : Not specified.
--

INNER PRODUCT

Origin Information

Product Country of Origin/Place of Provenance : Spain

Additional Origin Details :
Not specified.

Inner Pack Information

Internal GTIN : 5060462260690

Packaging Type Description : Box

Variable Weight Consumer Item : No

Net Drained Weight : Not specified.

Inner Unit Length : 200 mm

Inner Unit Height : 93 mm

Inner Unit Width : 135 mm

Inner Product Weight : 45.00 g

Inner Product Weight Units : g

Weight/Volume :
Not specified.

Handling Information

Directions For Use :
Consume before date given.

Storage Instructions :
Keep in a cool (16-18 degrees) dry place, away from direct sunlight, extreme heat, colour and humidity.

Dietary Information

Ingredients :

HAZELNUT and **ALMOND** filling (48%) sugar, **HAZELNUTS** (20%), **ALMONDS** (15%) rice syrup, cocoa liquor, sunflower oil, emulsifier: sunflower lecithin), sugar, vegetable fat (coconut, cocoa butter), dried glucose syrup, emulsifier (**SOYA** lecithin, sunflower lecithin), **WHEAT** flour, defatted cocoa powder, corn starch, potato starch, **WHEAT** fiber, salt, raising agent: sodium bicarbonate, sunflower oil, natural vanilla flavouring.

Product contains:

GM Protein/DNA :	No
Celery/Celeriac (and products thereof) :	No
Lupin (and products thereof) :	No
Eggs (and products thereof) :	May Contain
Fish (and products thereof) :	No
Soybeans (and products thereof) :	Yes
Milk (and products thereof) :	May Contain
Mustard (and products thereof) :	No
Peanuts (and products thereof) :	May Contain
Sesame Seeds (and products thereof) :	May Contain
Crustacea (and products thereof) :	No
Molluscs (and products thereof) :	No
Nuts (and products thereof) :	Yes
Almond nuts :	Yes
Hazelnuts :	Yes
Walnuts :	No
Cashew nuts :	No
Pecan nuts :	No
Brazil nuts :	No
Pistachio nuts :	No
Macadamia nuts :	No
Queensland nuts :	No
Cereals Containing Gluten :	Yes
Wheat (and products thereof) :	Yes
Rye (and products thereof) :	No
Barley (and products thereof) :	No
Oats (and products thereof) :	No
Spelt (and products thereof) :	No
Kamut (and products thereof) :	No
Gluten content <20ppm :	No
Hydrogenated Vegetable Oil/Fat :	No
Palm Oil :	No
Sulphur Dioxide and Sulphites :	May Contain
Sulphur Dioxide/Sulphites Concentration :	0

Product contains :

Artificial Antioxidants :	No
Artificial Colours :	No
Artificial Flavourings :	No
Artificial Flavour Enhancers :	No
Artificial Preservatives :	No
Artificial Sweeteners :	No

Product suitability:

Suitable for a Vegetarian Diet :	Yes
Suitable for a Vegan Diet :	Yes
Suitable for Sufferers of Lactose Intolerance :	No
Suitable for Coeliacs :	No
Approved for a Halal Diet :	No
Approved for a Kosher Diet :	No
HFSS (High in Fat, Salt and Sugar) :	Yes

Allergen Statement :

For allergens including cereals containing gluten see ingredients in bold. May contain milk, egg, sulphites, sesame, peanuts. Not suitable for allergy sufferers.

Nutritional Information

Average Serving :	22.50 g or ml
Count per 100g :	2 Pieces
Count Per Pack :	2
Energy per 100 G/ML :	2,257.00 kJ
Energy per 100 G/ML :	539.00 kcal
Fat per 100 G/ML :	34 g
- of which Saturates per 100 G/ML :	17 g
- of which Mono-unsaturates per 100 G/ML :	Not specified.
- of which Polyunsaturates per 100 G/ML :	Not specified.
Trans Fats per 100 G\ML :	Not specified.
Carbohydrate Per 100 G/ML :	53 g
- of which Sugars per 100 G/ML :	42 g
- of which Polyols per 100 G/ML :	Not specified.
- of which Starch per 100 G/ML :	Not specified.
Fibre per 100 G/ML :	<0.5 g
Protein per 100 G/ML :	4.5 g
Salt per 100 G/ML :	0.16 g
Sodium per 100 G\ML :	Not specified.

Vitamin A per 100g :	Not specified.
Vitamin C per 100g :	Not specified.
Folate/Folic Acid per 100g :	Not specified.
Calcium per 100g :	Not specified.
Iron per 100g :	Not specified.
Zinc per 100g :	Not specified.
Cholesterol per 100 G/ML (UK/FR) :	Not specified.
Non Milk Extrinsic Sugars per 100gm :	Not specified.
Alcoholic Strength %Vol :	Not specified.
Fat Percentage in Dry Matter per 100g :	Not specified.

Waste Packaging Weight - Inner Unit

Glass :	0.00 g
Plastic :	0.00 g
Percentage Recycled Plastic :	Not specified.
Paper/Board :	46.00 g

Aluminium :	0.00 g
Steel :	0.00 g
Other :	0.00 g

Accreditations / Certifications / Assurance Schemes

BRCGS Certified Production :	No
Red Tractor :	No
Fairtrade :	No
Marine Stewardship Council Certified (MSC) :	No
Organic :	No
SALSA (Safe & Local Supplier Approval) :	No
British Lion Mark :	No
RSPCA Assured :	No
LEAF Marque (Linking Environment and Farming) :	No
Rainforest Alliance :	No
Food for Life Supplier Scheme :	No
Quality Meat Scotland :	No
Farm Assured Welsh Livestock :	No
Northern Ireland Beef & Lamb Farm Quality Assurance Scheme :	No
Quality Standard Mark (Beef/Lamb) :	No
Roundtable of Sustainable Palm Oil (RSPO) :	No
School Approved (The Requirement for School Food Regulation 2014) :	No
IFS Food Standard :	Yes
Best Aquaculture Practices (BAP) Certification :	No
ISO 14001 (Environmental System) :	Yes
FSSC 22000 :	No

Other Accreditation :	Not specified.
Intra Stat/Taric Code :	18063100
Commodity Code :	1806310000
Identification/Health Marks :	Not specified.

Standards Testing

Do you undertake trend analysis of
microbiological results? : No

Is shelf life testing undertaken? : Yes

Microbiological Standards

Not available.

Analytical Standards

Not available.