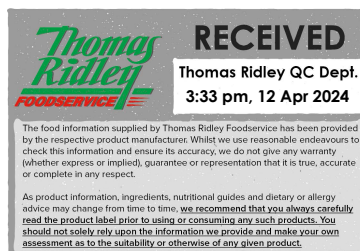


Changed Apr 11, 2024 14:12

Reviewed Apr 11, 2024 14:12

Erudus ID dfea46d899d647a589ba30d5e9407b8d

Version 2.0



10303

McDougalls White Mini Mallows 350g

Mcdougalls White Mini Mallows 350g

PRODUCT DESCRIPTION

White marshmallows in a tube shape

Brand	Orchard Valley Foods Ltd
Manufacturer Product Code	LEOMCDGLWHMAL
Product Type	Food
Product Category	Confectionery
Storage Type	Ambient
Erudus ID	dfea46d899d647a589ba30d5e9407b8d
Specification Type	Generic
Inner Component GTIN	5060292434391



INGREDIENTS

Ingredient Declaration

Glucose-Fructose Syrup, Sugar, Water, Pork Gelatine, Maize Starch, Dextrose, Flavouring.

ALLERGENS

Product Contains:

Celery/Celeriac	No	Mustard	No
Cereals Containing Gluten	No	Nuts (Tree)	No
Barley	No	Almond nuts	No
Oats	No	Brazil nuts	No
Rye	No	Cashew nuts	No
Wheat (including Spelt and Khorasan)	No	Hazelnuts	No
Crustacea	No	Macadamia (Queensland) nuts	No
Eggs	No	Pecan nuts	No
Fish	No	Pistachio nuts	No
Lupin	No	Walnuts	No
Milk	May Contain	Peanuts	No
Molluscs	No	Sesame Seeds	No
		Soybeans	May Contain
		Sulphur Dioxide and Sulphites	No

Risk Source:

Additional Allergen Information

May contain Milk and Soya.

SUPPLEMENTARY INGREDIENT INFORMATION

Palm Oil	No
Hydrogenated Vegetable Oil/Fat	No
GM Protein/DNA	No

ADDITIVES

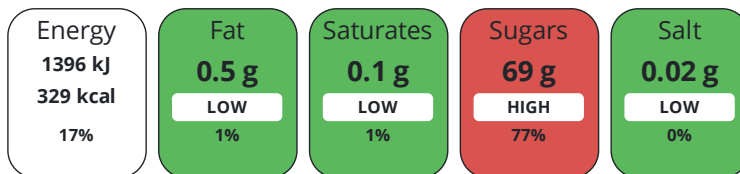
Product Contains:

Artificial Antioxidants	No	Artificial Flavourings	No
Artificial Colours	No	Artificial Preservatives	No
Artificial Flavour Enhancers	No	Artificial Sweeteners	No
Vegan Diet	No	Vegetarian Diet	No
Halal Diet	No	Kosher Diet	No

DIET
SUITABILITY

NUTRITIONAL
INFORMATION

Each 100g/ml portion contains:



of your reference intake.

Typical values per 100g/ml : Energy 329kcal / 1396kJ

Nutrient	per 100g	RI per 100g
Energy (kJ)	1396 kJ	17%
Energy (kcal)	329 kcal	16%
Fat	< 0.5 g	1%
of which Saturates	< 0.1 g	1%
Carbohydrate	79 g	30%
of which Sugars	69 g	77%
Fibre	0 g	
Protein	3.2 g	6%
Salt	0.02 g	0%

SUPPLEMENTARY
NUTRITIONAL
INFORMATION

HANDLING &
STORAGE
INFORMATION

Directions For Use

Decoration or ingredient.

Storage Instructions

Store in a cool dry place away from sunlight and strong odours.

Shelf Life from Time of Production	180 Days	Exempt From Shelf Life Labelling	No
---	----------	---	----

ACCREDITATIONS/
CERTIFICATIONS/
ASSURANCE
SCHEMES
ORIGIN

BRCGS Certified	Other Accreditation
------------------------	----------------------------

Product Country of Origin/Place of Belgium

Provenance

Additional Origin Details

Manufactured in Belgium, packed in the UK.

PRODUCT
CHARACTERISTICS
CONFIGURATION

Standards Testing

Case Configuration

Inner Pack Configuration

Total Quantity of Inner Components in 1 Units

Outer Case

Is the Outer Case Splittable? No

PRODUCT WEIGHTS

Inner Component	
Variable Weight Consumer Item	Yes
Outer Case	
Outer Case Gross Weight	0.43 kg
Outer Case Net Weight	0.35 kg

PRODUCT DIMENSIONS

Inner Component	
Inner Component Depth	124 mm
Inner Component Width	124 mm
Inner Component Height	158 mm
Outer Case	
Outer Case Depth	124 mm
Outer Case Width	124 mm
Outer Case Height	158 mm

PALLET INFORMATION

Quantity of Cases Per Pallet Layer	72 Cases	Pallet Height	1.8 MTR
Quantity of Layers Per Pallet	6 Layers	Pallet Gross Weight	206.62 kg
Quantity of Cases Per Pallet	432 Cases		

OTHER INFORMATION

Intrastat/Taric Code	17049099
-----------------------------	----------

Manufacturer Comments

Jars are recyclable, but caps are not

CONTACT INFORMATION

Address
 Orchard Valley Foods Ltd
 4 Lower Teme Business Park
 Burford
 Tenbury Wells
 Worcestershire
 WR15 8SZ
 England

Technical Contact
 Technical
 Technical Team
 qa@orchard-valley.co.uk

P: (Phone) 01584 811137

The information on the [Erudus System](#) has been supplied by the manufacturers of the products and, whilst the owners of the Erudus System take steps to ensure the information is regularly updated, they give no warranty and no guarantee that the information is accurate. Product information and ingredients may change, please always read product labels carefully in addition to using the information provided by Erudus.

We do not accept liability for any inaccuracies or incorrect information contained on this site. Please visit <http://www.erudus.com/terms-and-conditions> for full terms and conditions.