

Changed Apr 11, 2024 14:10

Erudus ID 4ae03e17a7b0461fbd5444350e959fa1

Version 2.0

10340

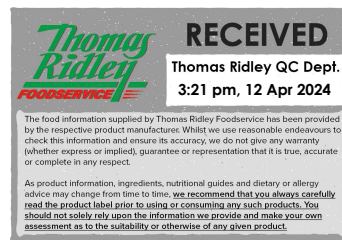
Apple Fry Pies 78g (1 x 40)

Apple Fry Pies 78g (1 X 40)

PRODUCT DESCRIPTION

Rectangular, hand-held pie with a lightly glazed, crisp, flaky pastry and a subtly spiced apple filling. Packed 2 x 20. Case also contains 40 x cardboard sleeves for serving hot Apple Pies. Suitable for vegetarians and vegans. As the filling will be very hot, please allow the apple fry pie to stand for 10-15 mins before serving. (1 x 40)

Brand	Central Foods Group Ltd
Manufacturer Product Code	KB1263
Product Type	Food
Product Category	Desserts
Storage Type	Frozen
Erudus ID	4ae03e17a7b0461fbd5444350e959fa1
Specification Type	Legacy



Outer Case GTIN 05060062473537



INGREDIENTS

Ingredient Declaration

Water, Fortified Wheat Flour (**WHEAT** Flour, Calcium Carbonate, Iron, Niacin, Thiamin), Apple (17%), Modified Starch, Sugar, Palm Oil, Rapeseed Oil, Apple Juice Concentrate, Invert Sugar Syrup, Salt, Dextrose, Spices (Cinnamon, Nutmeg, Cassia), Acid (Ascorbic Acid), Acidity Regulator (Citric Acid), Flavouring.

ALLERGENS

Product Contains:

Celery/Celeriac	No	Mustard	No
Cereals Containing Gluten	Yes	Nuts (Tree)	No
Barley	No	Almond nuts	No
Oats	No	Brazil nuts	No
Rye	No	Cashew nuts	No
Wheat (including Spelt and Khorasan)	Yes	Hazelnuts	No
Gluten content <20ppm	No	Macadamia (Queensland) nuts	No
Crustacea	No	Pecan nuts	No
Eggs	No	Pistachio nuts	No
Fish	No	Walnuts	No
Lupin	No	Peanuts	No
Milk	No	Sesame Seeds	No
Molluscs	No	Soybeans	No
		Sulphur Dioxide and Sulphites	No

Additional Allergen Information

For allergens, including cereals containing gluten, see ingredients in CAPITALS.

SUPPLEMENTARY
INGREDIENT
INFORMATION

Palm Oil	Yes
Hydrogenated Vegetable Oil/Fat	No
GM Protein/DNA	No

ADDITIVES

Product Contains:

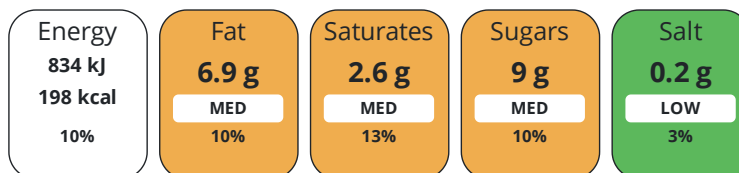
Artificial Antioxidants	No	Artificial Flavourings	No
Artificial Colours	No	Artificial Preservatives	No
Artificial Flavour Enhancers	No	Artificial Sweeteners	No

DIET
SUITABILITY

Suitable for Coeliacs	No	Halal Diet	No
Kosher Diet	No	Vegetarian Diet	Suitable for
Vegan Diet	Suitable for		

NUTRITIONAL
INFORMATION

Each 100g/ml portion contains:



of your reference intake.

Typical values per 100g/ml : Energy 198kcal / 834kj

Nutrient	per 100g/ml	RI per 100g/ml	per 78g/ml serving	RI per 78g/ml serving
Energy (kJ)	834 kJ	10%	650.5 kJ	8%
Energy (kcal)	198 kcal	10%	154.4 kcal	8%
Fat	6.9 g	10%	5.4 g	8%
of which Saturates	2.6 g	13%	2 g	10%
Carbohydrate	30.3 g	12%	23.6 g	9%
of which Sugars	9 g	10%	7 g	8%
Fibre	1.3 g		1 g	
Protein	3.14 g	6%	2.4 g	5%
Salt	0.2 g	3%	0.2 g	3%
Sodium	79.8 mg		62.2 mg	

Serving Size 78 g

SUPPLEMENTARY
NUTRITIONAL
INFORMATION

HFSS (HIGH IN
FAT, SALT AND
SUGAR)

HFSS Status No

HANDLING &
STORAGE
INFORMATION

Directions For Use

From Frozen unless otherwise stated Deep Fry: Pre-heat oil to 182°C and deep fry for 6 mins, until crisp and golden. Drain well before serving. All appliances vary, these are guidelines only. As the filling will be very hot, please allow the apple fry pie to stand for 10-15 mins before serving. To maintain vegan integrity, please ensure all equipment used for vegan preparation/cooking/serving is clean or dedicated for vegan use only. Do NOT refreeze once defrosted.

Storage Instructions

Keep Frozen. Store at -18°C or below

Shelf Life from Time of Production 274 Days

ACCREDITATIONS/
CERTIFICATIONS/
ASSURANCE
SCHEMES
ORIGIN

BRCGS Certified

Roundtable of Sustainable Palm Oil (RSPO)

Product Country of Origin/Place of United Kingdom

Provenance

Additional Origin Details

United Kingdom

PRODUCT
CHARACTERISTICS

Standards Testing

Do you undertake trend analysis of No

Is shelf life testing undertaken? No

microbiological results?

Microbiological Standards

Organism	Description	Frequency	Target	Maximum	Sample (g or ml)
E. Coli (cfu/g or ml)		Monthly	<100	100	-
Staphylococcus Aureus (cfu/g or ml)		Monthly	<100	100	-
Total Viable Count (TVC) (cfu/g or ml)		Monthly	<1000000	1000000	-
Salmonella (cfu/g or ml)		Monthly	=0	0	-
Yeast (cfu/g or ml)		Monthly	<5000	5000	-
Moulds (cfu/g or ml)		Monthly	<5000	5000	-

CONFIGURATION

Case Configuration

Inner Pack Configuration

Total Quantity of Inner Components in 1 Units

Outer Case

Is the Outer Case Splittable? No

PRODUCT
WEIGHTS

Inner Component

Variable Weight Consumer Item No

Weight/Volume

20/1.56kg e

Outer Case

Outer Case Gross Weight 3.54 kg

Outer Case Net Weight 3.12 kg

PRODUCT
DIMENSIONS

Inner Component

Inner Component Depth 0 mm

Inner Component Width 0 mm

Inner Component Height 0 mm

Outer Case

Outer Case Depth 256 mm

Outer Case Width 210 mm

Outer Case Height 159 mm

PALLET
INFORMATION

Quantity of Cases Per Pallet Layer 20 Cases

Pallet Height 1.58 MTR

Quantity of Layers Per Pallet 9 Layers

Pallet Gross Weight 652.2 kg

Quantity of Cases Per Pallet 180 Cases

PACKAGING

Inner Component Packaging

Type	Materials	Weight	Recycled Plastic %	Recyclable	Returnable	Composite
Bag	Plastic	13.6 g	- %			
Bag	Paper/Cardboard	402 g	- %			

Transport Packaging

Type	Materials	Weight	Recycled Plastic %	Recyclable	Returnable	Composite
Other	Plastic	280 g	- %		Yes	

OTHER INFORMATION CONTACT INFORMATION

Address

Central Foods Group Ltd
 Maple Court
 Ash Lane, Collingtree
 Collingtree
 Northants
 NN4 0NB
 England

P: (Phone) 01604 858 522

Complaints Contact

Karen Wright
 Customer Care Admin Assistant
 kwright@centralfoods.co.uk

P: (Phone) 01604 878 299

Technical Contact

Chris Stobart
 Technical Manager
 technical@centralfoods.co.uk

P: (Phone) 01604 878 276

Commercial Contact

Oliver Sampson
 Commercial Manager
 osampson@centralfoods.co.uk

P: (Phone) 07715 073 273

The information on the [Erudus System](#) has been supplied by the manufacturers of the products and, whilst the owners of the Erudus System take steps to ensure the information is regularly updated, they give no warranty and no guarantee that the information is accurate. Product information and ingredients may change, please always read product labels carefully in addition to using the information provided by Erudus.

We do not accept liability for any inaccuracies or incorrect information contained on this site. Please visit <http://www.erudus.com/terms-and-conditions> for full terms and conditions.