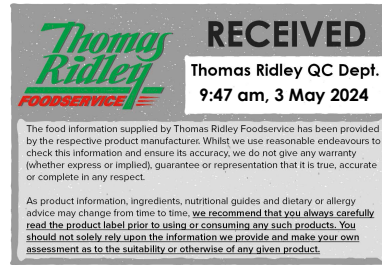


**Changed** May 01, 2024 09:42  
**Reviewed** May 01, 2024 09:42  
**Erudus ID** 6550ee71d4cf40ec9bb7ba39a2f67a96  
**Version** 2.0



10407

# Moosebreak Strawberry 10 x 450g

Moosebreak Strawberry 10x450g

## PRODUCT DESCRIPTION

Strawberry Flavoured Dessert Mousse Mix

<b>Brand</b>	Aimia Foods Ltd
<b>Manufacturer Product Code</b>	STRAW450X
<b>Product Type</b>	Food
<b>Product Category</b>	Desserts
<b>Storage Type</b>	Ambient
<b>Erudus ID</b>	6550ee71d4cf40ec9bb7ba39a2f67a96
<b>Specification Type</b>	Generic
<b>Inner Component GTIN</b>	5060113919250
<b>Outer Case GTIN</b>	05060113919267



## INGREDIENTS

### Ingredient Declaration

Skimmed MILK powder, sugar, dried glucose syrup, palm oil, emulsifiers (E471, E472b, E472e, E450iii), stabilisers (E407, E340ii), MILK proteins, natural flavouring, calcium carbonate, anti-caking agent (E551), natural colour (E162).

## ALLERGENS

Product Contains:

<b>Celery/Celeriac</b>	No
<b>Cereals Containing Gluten</b>	No
<b>Barley</b>	No
<b>Oats</b>	No
<b>Rye</b>	No
<b>Wheat (including Spelt and Khorasan)</b>	No
<b>Crustacea</b>	No
<b>Eggs</b>	No
<b>Fish</b>	No
<b>Lupin</b>	No
<b>Milk</b>	Yes
<b>Molluscs</b>	No
<b>Mustard</b>	No
<b>Nuts (Tree)</b>	No
<b>Almond nuts</b>	No
<b>Brazil nuts</b>	No
<b>Cashew nuts</b>	No
<b>Hazelnuts</b>	No
<b>Macadamia (Queensland) nuts</b>	No
<b>Pecan nuts</b>	No
<b>Pistachio nuts</b>	No
<b>Walnuts</b>	No
<b>Peanuts</b>	No
<b>Sesame Seeds</b>	No
<b>Soybeans</b>	No
<b>Sulphur Dioxide and Sulphites</b>	No

SUPPLEMENTARY INGREDIENT INFORMATION

<b>Palm Oil</b>	Yes
<b>Hydrogenated Vegetable Oil/Fat</b>	No
<b>GM Protein/DNA</b>	No

ADDITIVES

Product Contains:

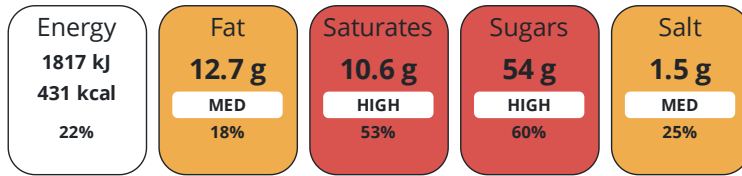
<b>Artificial Antioxidants</b>	No
<b>Artificial Colours</b>	No
<b>Artificial Flavour Enhancers</b>	No
<b>Artificial Flavourings</b>	No
<b>Artificial Preservatives</b>	No
<b>Artificial Sweeteners</b>	No

DIET SUITABILITY

<b>Vegan Diet</b>	No	<b>Vegetarian Diet</b>	Suitable for
<b>Halal Diet</b>	No	<b>Kosher Diet</b>	No

NUTRITIONAL INFORMATION

Each 100g/ml portion contains:



of your reference intake.

Typical values per 100g/ml : Energy 431kcal / 1817kJ

Nutrient	per 100g	RI per 100g
Energy (kJ)	1817 kJ	22%
Energy (kcal)	431 kcal	22%
Fat	12.7 g	18%
of which Saturates	10.6 g	53%
Carbohydrate	62.3 g	24%
of which Sugars	54 g	60%
Fibre	0.5 g	
Protein	16.7 g	33%
Salt	1.5 g	25%
Number of Servings		30 Servings

#### VITAMINS AND MINERALS

Nutrient	per 100g	RI per 100g
Calcium	808 mg	101%

#### SUPPLEMENTARY NUTRITIONAL INFORMATION

Fibre Type	Fibre AOAC
------------	------------

#### HFSS (HIGH IN FAT, SALT AND SUGAR)

HFSS Status	Yes
HFSS Score	5

#### HANDLING & STORAGE INFORMATION

##### Directions For Use

To make mousse, pour the required quantity of cold water into a large bowl, add the required quantity of mousse mix and whisk on high speed for approximately 5 minutes until light and fluffy. Mousse can be served ambient – leave to stand for 1 hour before serving and use within 4 hours. For best results and a firmer set mousse serve chilled - refrigerate for 1 hour before serving and use within 24 hours.

##### Storage Instructions

Store in a cool, dry place away from direct sunlight and strong odours.

Shelf Life from Time of Production	365 Days
Exempt From Shelf Life Labelling	No

#### ACCREDITATIONS/ CERTIFICATIONS/ ASSURANCE SCHEMES

BRCGS Certified	Other Accreditation
-----------------	---------------------

#### ORIGIN

Product Country of Origin/Place of Provenance	United Kingdom
---	----------------

#### Additional Origin Details

N/A

#### PRODUCT CHARACTERISTICS

## Standards Testing

<b>Do you undertake trend analysis of microbiological results?</b>	No
<b>Is shelf life testing undertaken?</b>	Yes

## HAZARD CONTROLS

<b>Sieving</b>	Yes	<b>X-ray</b>	Yes
----------------	-----	--------------	-----

## CONFIGURATION

## Case Configuration

<b>Variable Inner Components in Outer Case</b>	No
<b>Total Quantity of Inner Components in Outer Case</b>	10 Units
<b>Is the Outer Case Splittable?</b>	Yes
Inner Pack Configuration	

## PRODUCT WEIGHTS

## Inner Component

<b>Variable Weight Consumer Item</b>	No
<b>Inner Component Weight</b>	450 g
<b>e mark</b>	Yes

## Outer Case

<b>Outer Case Gross Weight</b>	4.98 kg
<b>Outer Case Net Weight</b>	4.5 kg

## PRODUCT DIMENSIONS

## Inner Component

<b>Inner Component Depth</b>	70 mm
<b>Inner Component Width</b>	200 mm
<b>Inner Component Height</b>	240 mm

## Outer Case

<b>Outer Case Depth</b>	280 mm
<b>Outer Case Width</b>	2 mm
<b>Outer Case Height</b>	170 mm

## PALLET INFORMATION

<b>Quantity of Cases Per Pallet Layer</b>	12 Cases
<b>Quantity of Layers Per Pallet</b>	7 Layers
<b>Quantity of Cases Per Pallet</b>	84 Cases
<b>Pallet Height</b>	1.4 MTR
<b>Pallet Gross Weight</b>	446 kg

## PACKAGING

## Inner Component Packaging

Type	Materials	Weight	Recycled Plastic %	Recyclable	Returnable	Composite
Poly Treated PET/PE	Plastic	10 g	- %	No	No	
Other	Plastic / LDPE (Low Density Polyethylene)	2 g	- %	No	No	

## Outer Case Packaging

Type	Materials	Weight	Recycled Plastic %	Recyclable	Returnable	Composite
Case	Paper/Cardboard / Corrugated	355 g	- %	Yes	No	
Label	Paper/Cardboard / Corrugated	1.7 g	- %	Yes		

## MARKETING INFORMATION

### Marketing Description

Easy to prepare – just add water & whisk, light & fluffy texture. Serve ambient or chilled. Contains natural flavouring & colour, source of protein and calcium.

Low sodium, only 1.9g fat per portion.

## OTHER INFORMATION

### Manufacturer Comments

N/A

## CONTACT INFORMATION

### Address

Aimia Foods Ltd

Penny Lane

Haydock

Merseyside

WA11 0QZ

England

P: (Phone) 01942 272900

### Technical Contact

Sophie Wall

Head of Technical

sophie.wall@aimiafoods.com

P: (Phone) 01942272900

### Complaints Contact

Helen Bulmer

Customer Services Manager

customer.services@aimiafoods.com

P: (Phone) 01942 408600

The information on the [Erudus System](#) has been supplied by the manufacturers of the products and, whilst the owners of the Erudus System take steps to ensure the information is regularly updated, they give no warranty and no guarantee that the information is accurate. Product information and ingredients may change, please always read product labels carefully in addition to using the information provided by Erudus.

We do not accept liability for any inaccuracies or incorrect information contained on this site.  
Please visit <http://www.erudus.com/terms-and-conditions> for full terms and conditions.