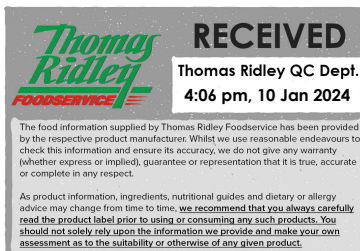


Changed Jan 10, 2024 15:56

Reviewed Jan 10, 2024 15:56

Erudus ID 5102a3da79cf488ea5dc4d7fc7a71b4e

Version 2.0



# Plain Wheat Flour Tortilla 4x1240g

25cm Plain Wheat Flour Tortilla 4 x 18ct Frozen

## PRODUCT DESCRIPTION

A round flat bread can be used to wrap up and kind of food according to choice. The wraps can be served cold, warm, oven baked, microwave heated and even deep fried.

Brand	Mission
Manufacturer Product Code	37174
Product Type	Food
Product Category	Bread - Other
Storage Type	Frozen
Erudus ID	5102a3da79cf488ea5dc4d7fc7a71b4e
Specification Type	Bakery Products
Outer Case GTIN	05036344006274



## INGREDIENTS

### Ingredient Declaration

Fortified **WHEAT** Flour (**WHEAT** Flour, Calcium Carbonate, Iron, Niacin, Thiamin), Water, Vegetable Oils (Palm Oil, Rapeseed Oil), Sugar, Raising Agents (Sodium Carbonates, Diphosphates), Acidity Regulator (Malic Acid), Stabiliser (Sodium Carboxymethyl Cellulose), Salt.

## ALLERGENS

Product Contains:

<b>Celery/Celeriac</b>	No	<b>Mustard</b>	No
<b>Cereals Containing Gluten</b>	Yes	<b>Nuts (Tree)</b>	No
<b>Barley</b>	No	<b>Almond nuts</b>	No
<b>Oats</b>	No	<b>Brazil nuts</b>	No
<b>Rye</b>	No	<b>Cashew nuts</b>	No
<b>Wheat (including Spelt and Khorasan)</b>	Yes	<b>Hazelnuts</b>	No
<b>Crustacea</b>	No	<b>Macadamia (Queensland) nuts</b>	No
<b>Eggs</b>	No	<b>Pecan nuts</b>	No
<b>Fish</b>	No	<b>Pistachio nuts</b>	No
<b>Lupin</b>	No	<b>Walnuts</b>	No
<b>Milk</b>	No	<b>Peanuts</b>	No
<b>Molluscs</b>	No	<b>Sesame Seeds</b>	No
		<b>Soybeans</b>	No
		<b>Sulphur Dioxide and Sulphites</b>	No

## SUPPLEMENTARY INGREDIENT INFORMATION

<b>Palm Oil</b>	Yes
<b>Hydrogenated Vegetable Oil/Fat</b>	No
<b>GM Protein/DNA</b>	No

ADDITIVES

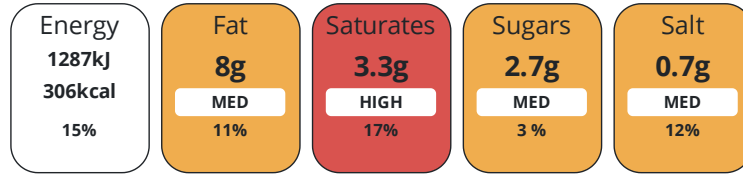
Product Contains:

<b>Artificial Antioxidants</b>	No	<b>Artificial Flavourings</b>	No
<b>Artificial Colours</b>	No	<b>Artificial Preservatives</b>	No
<b>Artificial Flavour Enhancers</b>	No	<b>Artificial Sweeteners</b>	No
<b>Vegan Diet</b>	Suitable for	<b>Vegetarian Diet</b>	Suitable for
<b>Halal Diet</b>	No	<b>Kosher Diet</b>	No

DIET  
SUITABILITY

NUTRITIONAL  
INFORMATION

Each 100g/ml portion contains:



of your reference intake.

Typical values per 100g/ml : Energy 306kcal / 1287kj

Nutrient	per 100g	RI per 100g	per 70g serving	RI per 70g serving
<b>Energy (kj)</b>	1287 kj	15%	900.9 kj	11%
<b>Energy (kcal)</b>	306 kcal	15%	214.2 kcal	11%
<b>Fat</b>	8 g	11%	5.6 g	8%
<b>of which Saturates</b>	3.3 g	17%	2.3 g	12%
<b>of which Mono-unsaturates</b>	3.1 g		2.2 g	
<b>of which Polyunsaturates</b>	1.3 g		0.9 g	
<b>Carbohydrate</b>	48.6 g	19%	34 g	13%
<b>of which Sugars</b>	2.7 g	3%	1.9 g	2%
<b>Fibre</b>	4.6 g		3.2 g	
<b>Protein</b>	7.6 g	15%	5.3 g	11%
<b>Salt</b>	0.7 g	12%	0.5 g	8%
<b>Sodium</b>	280 mg		196 mg	

<b>Serving Size</b>	70 g
<b>Serving Size Description</b>	1 Tortilla
<b>Number of Servings</b>	18 Servings

**Source of Nutritional Information** Manufacturers analysis

**Fibre Type** Fibre AOAC

SUPPLEMENTARY  
NUTRITIONAL  
INFORMATION

HFSS (HIGH IN  
FAT, SALT AND  
SUGAR)

<b>HFSS Status</b>	1
<b>HFSS Score</b>	1

HANDLING &  
STORAGE  
INFORMATION

**Directions For Use**

Frozen, -18°C. To defrost, decant out of case and do not stack more than 2 packs high. For optimum rollability, use at ambient temperature (16 – 21°C). Use immediately once pack has been opened. Do not refreeze after thawing.

**Storage Instructions**

Frozen Shelf Life: 548 days, -18°C \*After thawing: 7 days, store chilled max 7°C

**Storage Instructions After Opening**

Use immediately once pack has been opened.

<b>Shelf Life from Time of Production</b>	548 Days	<b>Exempt From Shelf Life Labelling</b>	No
<b>Shelf Life From Opening</b>	1 Days		
<b>Shelf Life Once Defrosted</b>	1 Days		

ACCREDITATIONS/  
CERTIFICATIONS/  
ASSURANCE  
SCHEMES



**Other Accreditation**

RSPO Cert: BMT-RSPO-000194

ORIGIN

**Product Country of Origin/Place of** United Kingdom

**Provenance**

Standards Testing

PRODUCT  
CHARACTERISTICS

<b>Do you undertake trend analysis of microbiological results?</b>	Yes	<b>Is shelf life testing undertaken?</b>	Yes
		<b>Commercially Sterile</b>	No

Microbiological Standards

Organism	Description	Frequency	Target	Maximum	Sample (g or ml)
E. Coli (cfu/g or ml)		Annually	=10	10	70
Staphylococcus Aureus (cfu/g or ml)		Annually	<1	1	70
Bacillus Cereus (cfu/g or ml)		Annually	=10	10	70
Salmonella (cfu/g or ml)		Annually	<1	1	70
Listeria SPP (cfu/g or ml)		Annually	<1	1	70
Yeast (cfu/g or ml)		Annually	<50	500	70
Moulds (cfu/g or ml)		Annually	<50	500	70
Enterobacteriaceae (cfu/g or ml)		Annually	<10	10	70
Aerobic Colony Count (ACC) (cfu/g or ml)		Annually	<1000	10000	70
Listeria Monocytogenes (cfu/g or ml)		Annually	<1	1	70

Analytical Standards

Test	Description	Frequency	Target	Range	Sample (g or ml)
pH		Every Batch	=6.7	6.0 to 7.2	70
Moisture (%)		Every Batch	=32	30 to 34	70

Physical Standards

Test	Description	Frequency	Target	Range	Sample (g or ml)
Dimensions Diameter (mm)	cm	Every Batch	=250	230 to 270	70
Weight (g)		Every Batch	=1240	1240 to 1202.8	70

## HAZARD CONTROLS

<b>Metal Detection</b>	Yes	<b>Sieving</b>	Yes
<b>Magnets</b>	Yes	<b>Filters</b>	Yes

## CONFIGURATION

Case Configuration		Inner Pack Configuration	
<b>Variable Inner Components in Outer Case</b>	No	<b>Count per Inner Component</b>	18
<b>Total Quantity of Inner Components in Outer Case</b>	4 Units		
<b>Is the Outer Case Splittable?</b>	Yes		

## PRODUCT WEIGHTS

Inner Component	
<b>Variable Weight Consumer Item</b>	No
<b>Inner Component Weight</b>	1240 g
<b>e mark</b>	No
Outer Case	
<b>Outer Case Gross Weight</b>	1.29 kg
<b>Outer Case Net Weight</b>	1.24 kg

## PRODUCT DIMENSIONS

Inner Component	
<b>Inner Component Depth</b>	34 mm
<b>Inner Component Width</b>	29 mm
<b>Inner Component Height</b>	10 mm
Outer Case	
<b>Outer Case Depth</b>	338 mm
<b>Outer Case Width</b>	288 mm
<b>Outer Case Height</b>	196 mm

## PALLET INFORMATION

<b>Quantity of Cases Per Pallet Layer</b>	11 Cases	<b>Pallet Height</b>	1.53 MTR
<b>Quantity of Layers Per Pallet</b>	8 Layers	<b>Pallet Gross Weight</b>	526 kg
<b>Quantity of Cases Per Pallet</b>	88 Cases		

## PACKAGING

Inner Component Packaging						
Type	Materials	Weight	Recycled Plastic %	Recyclable	Returnable	Composite
Film	Plastic / OPP (Oriented Polypropylene)	10 g	0 %	No	No	No
Outer Case Packaging						
Type	Materials	Weight	Recycled Plastic %	Recyclable	Returnable	Composite
Case	Paper/Cardboard / Corrugated	50 g	- %	Yes	No	No
Transport Packaging						
Type	Materials	Weight	Recycled Plastic %	Recyclable	Returnable	Composite
Layer Card	Paper/Cardboard / Cardboard	298 g	- %	Yes	Yes	No
Other	Wood	25000 g	- %	Yes	No	No
Pallet Wrap	Plastic / PE (Polyethylene)	200 g	0 %	No	No	No

## OTHER INFORMATION

<b>Value Added Tax Rate</b>	20%
-----------------------------	-----

CONTACT  
INFORMATION

Address

Mission Foods (Seaham)  
14 Partnership Ct  
Seaham Grange Industrial Estate  
Seaham  
County Durham  
SR7 0PT  
United Kingdom

P: (Phone) 01915218833

Technical Contact

Mike Pennington  
Technical Officer  
mpennington@missionfoods.com

P: (Phone) 01915218833

The information on the [Erudus System](#) has been supplied by the manufacturers of the products and, whilst the owners of the Erudus System take steps to ensure the information is regularly updated, they give no warranty and no guarantee that the information is accurate. Product information and ingredients may change, please always read product labels carefully in addition to using the information provided by Erudus.

We do not accept liability for any inaccuracies or incorrect information contained on this site.  
Please visit <http://www.erudus.com/terms-and-conditions> for full terms and conditions.