


Changed Jan 11, 2024 09:25

Reviewed Jan 11, 2024 09:25

Erudus ID 8111113ba422454db0691adb2665f82d

Version 2.0



RECEIVED
Thomas Ridley QC Dept.
11:05 am, 12 Jan 2024

The food information supplied by Thomas Ridley Foodservice has been provided by the respective product manufacturer. Whilst we use reasonable endeavours to check this information and ensure its accuracy, we do not give any warranty (whether express or implied), guarantee or representation that it is true, accurate or complete in any respect.

As product information, ingredients, nutritional guides and dietary or allergy advice may change from time to time, we recommend that you always carefully read the product label prior to using or consuming any such products. You should not solely rely upon the information we provide and make your own assessment as to the suitability or otherwise of any given product.



Plain Wheat Flour Tortilla 4x1620g

30cm Plain Wheat Flour Tortilla 4 x 18ct Frozen

PRODUCT DESCRIPTION

A round flat bread can be used to wrap up and kind of food according to choice. The wraps can be served cold, warm, oven baked, microwave heated and even deep fried.

Brand	Mission
Manufacturer Product Code	37172
Product Type	Food
Product Category	Bread - Other
Storage Type	Frozen
Erudus ID	8111113ba422454db0691adb2665f82d
Specification Type	Bakery Products
Outer Case GTIN	05036344006267



INGREDIENTS

Ingredient Declaration

Fortified **WHEAT** Flour (**WHEAT** Flour, Calcium Carbonate, Iron, Niacin(B3), Thiamin(B1)), Water, Vegetable Oils (Palm Oil, Rapeseed Oil), Sugar, Raising Agents (Sodium Carbonates (E500), Diphosphates(E450)), Acidity Regulator (Malic Acid (E296)), Stabiliser (Sodium Carboxymethyl Cellulose (E466), Cellulose Gum), Salt.

ALLERGENS

Product Contains:

Celery/Celeriac	No	Mustard	No
Cereals Containing Gluten	Yes	Nuts (Tree)	No
Barley	No	Almond nuts	No
Oats	No	Brazil nuts	No
Rye	No	Cashew nuts	No
Wheat (including Spelt and Khorasan)	Yes	Hazelnuts	No
Crustacea	No	Macadamia (Queensland) nuts	No
Eggs	No	Pecan nuts	No
Fish	No	Pistachio nuts	No
Lupin	No	Walnuts	No
Milk	No	Peanuts	No
Molluscs	No	Sesame Seeds	No
		Soybeans	No
		Sulphur Dioxide and Sulphites	No

SUPPLEMENTARY INGREDIENT INFORMATION

Palm Oil	Yes
Hydrogenated Vegetable Oil/Fat	No
GM Protein/DNA	No

ADDITIVES

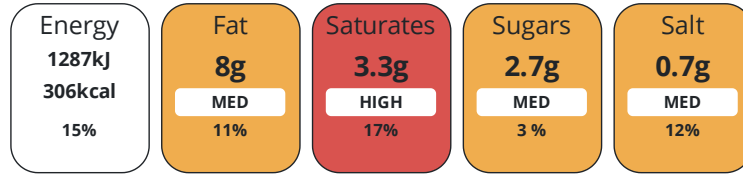
Product Contains:

Artificial Antioxidants	No	Artificial Flavourings	No
Artificial Colours	No	Artificial Preservatives	No
Artificial Flavour Enhancers	No	Artificial Sweeteners	No
Vegan Diet	Suitable for	Vegetarian Diet	Suitable for
Halal Diet	No	Kosher Diet	No

DIET
SUITABILITY

NUTRITIONAL
INFORMATION

Each 100g/ml portion contains:



of your reference intake.

Typical values per 100g/ml : Energy 306kcal / 1287kj

Nutrient	per 100g	RI per 100g	per 90g serving	RI per 90g serving
Energy (kJ)	1287 kJ	15%	1158.3 kJ	14%
Energy (kcal)	306 kcal	15%	275.4 kcal	14%
Fat	8 g	11%	7.2 g	10%
of which Saturates	3.3 g	17%	3 g	15%
of which Mono-unsaturates	3.1 g		2.8 g	
of which Polyunsaturates	1.3 g		1.2 g	
Carbohydrate	48.6 g	19%	43.7 g	17%
of which Sugars	2.7 g	3%	2.4 g	3%
Fibre	4.6 g		4.1 g	
Protein	7.6 g	15%	6.8 g	14%
Salt	0.7 g	12%	0.6 g	10%
Sodium	280 mg		252 mg	

Serving Size	90 g
Serving Size Description	1 Tortilla
Number of Servings	18 Servings

Source of Nutritional Information Manufacturers analysis

Fibre Type Fibre AOAC

SUPPLEMENTARY
NUTRITIONAL
INFORMATION

HFSS (HIGH IN
FAT, SALT AND
SUGAR)

HFSS Status	1
HFSS Score	1

HANDLING &
STORAGE
INFORMATION

Directions For Use

Frozen, -18°C To defrost, decant out of case and do not stack more than 2 packs high. For optimum rollability, use at ambient temperature (16 – 21°C). Use immediately once pack has been opened. Do not refreeze after thawing.

Storage Instructions

Frozen Shelf Life: 548 days, -18°C *After thawing: 7 days, store chilled max 7°C

Storage Instructions After Opening

Use immediately once pack has been opened.

Shelf Life from Time of Production	548 Days	Exempt From Shelf Life Labelling	No
Shelf Life From Opening	1 Days		
Shelf Life Once Defrosted	7 Days		

ACCREDITATIONS/
CERTIFICATIONS/
ASSURANCE
SCHEMES



Other Accreditation

RSPO Cert: BMT-RSPO-000194

ORIGIN

Product Country of Origin/Place of United Kingdom

Provenance

Standards Testing

PRODUCT
CHARACTERISTICS

Do you undertake trend analysis of microbiological results?	Yes	Is shelf life testing undertaken?	Yes
		Commercially Sterile	No

Microbiological Standards

Organism	Description	Frequency	Target	Maximum	Sample (g or ml)
E. Coli (cfu/g or ml)		Annually	<10	10	90
Bacillus Cereus (cfu/g or ml)		Annually	<10	10	90
Salmonella (cfu/g or ml)		Annually	<1	1	90
Listeria SPP (cfu/g or ml)		Annually	<1	1	90
Listeria Monocytogenes (cfu/g or ml)		Annually	<1	1	90
Yeast (cfu/g or ml)		Annually	<50	500	90
Enterobacteriaceae (cfu/g or ml)		Annually	<10	10	90
Moulds (cfu/g or ml)		Annually	<50	500	90
Aerobic Colony Count (ACC) (cfu/g or ml)		Annually	<1000	10000	90
Staphylococcus Aureus (cfu/g or ml)		Annually	<1	1	90

Analytical Standards

Test	Description	Frequency	Target	Range	Sample (g or ml)
pH		Every Batch	=6.7	6.0 to 7.2	90
Moisture (%)		Every Batch	<32	30 to 34	90

Physical Standards

Test	Description	Frequency	Target	Range	Sample (g or ml)
Dimensions Diameter (mm)		Every Batch	=300	280 to 320	90
Weight (g)		Every Batch	=1620	1620 to 1571.4	90

Quality Standards

Test	Description	Frequency	Target	Range	Sample (g or ml)
Damaged (count)	Figures expressed as %	Every Batch	<3	0 to 3	1620

HAZARD CONTROLS

Metal Detection	Yes	Sieving	Yes
Magnets	Yes	Filters	Yes

CONFIGURATION

Case Configuration	Inner Pack Configuration		
Variable Inner Components in Outer Case	No	Count per Inner Component	18
Total Quantity of Inner Components in Outer Case	4 Units		
Is the Outer Case Splittable?	No		

PRODUCT WEIGHTS

Inner Component	
Variable Weight Consumer Item	No
Inner Component Weight	1620 g
e mark	No

Outer Case	
Outer Case Gross Weight	6.85 kg
Outer Case Net Weight	6.48 kg

PRODUCT DIMENSIONS

Inner Component	
Inner Component Depth	430 mm
Inner Component Width	340 mm
Inner Component Height	10 mm

Outer Case	
Outer Case Depth	331 mm
Outer Case Width	331 mm
Outer Case Height	197 mm

PALLET INFORMATION

Quantity of Cases Per Pallet Layer	9 Cases	Pallet Height	1.6 MTR
Quantity of Layers Per Pallet	8 Layers		
Quantity of Cases Per Pallet	72 Cases		

PACKAGING

Inner Component Packaging						
Type	Materials	Weight	Recycled Plastic %	Recyclable	Returnable	Composite
Film	Plastic / OPP (Oriented Polypropylene)	12 g	0 %	No	No	No

Outer Case Packaging						
Type	Materials	Weight	Recycled Plastic %	Recyclable	Returnable	Composite
Paper/Polyethylene	Paper/Cardboard / Corrugated	50 g	- %	Yes	No	No

Transport Packaging

Type	Materials	Weight	Recycled Plastic %	Recyclable	Returnable	Composite
Layer Card	Paper/Cardboard / Cardboard	297 g	- %	Yes	No	No
Other	Wood	25000 g	- %	Yes	No	No
Pallet Wrap	Plastic / PE (Polyethylene)	200 g	- %	No	No	No

OTHER INFORMATION

Value Added Tax Rate 20%

CONTACT INFORMATION

Address

Mission Foods (Seaham)
 14 Partnership Ct
 Seaham Grange Industrial Estate
 Seaham
 County Durham
 SR7 0PT
 United Kingdom

Technical Contact

Mike Pennington
 Technical Officer
 mpennington@missionfoods.com

P: (Phone) 01915218833

P: (Phone) 01915218833

The information on the [Erudus System](#) has been supplied by the manufacturers of the products and, whilst the owners of the Erudus System take steps to ensure the information is regularly updated, they give no warranty and no guarantee that the information is accurate. Product information and ingredients may change, please always read product labels carefully in addition to using the information provided by Erudus.

We do not accept liability for any inaccuracies or incorrect information contained on this site.
 Please visit <http://www.erudus.com/terms-and-conditions> for full terms and conditions.