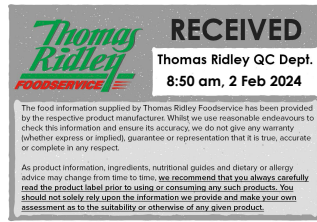


Changed Feb 01, 2024 14:30

Reviewed Feb 01, 2024 14:30

Erudus ID 15201e1594724271b3c93ebe1e1f9fe5

Version 3.0



# Netherend Farm 100 x 10g Salted Butter Portions

Netherend Farm 100 X 10g Salted Butter Portions 100x1000g

## PRODUCT DESCRIPTION

English butter produced from fresh cream sourced from the West Country. The cream is traditionally barrel churned and then formed into 10g butter portions and wrapped in aluminium foil, laminated with 10 -12 gsm wax to 40 gsm greaseproof paper, embossed linen finish. Packed into cardboard boxes.

<b>Brand</b>	Netherend Farm Ltd
<b>Manufacturer Product Code</b>	SP1
<b>Product Type</b>	Food
<b>Product Category</b>	Butter, Yellow Fats & Other Fats
<b>Storage Type</b>	Chilled
<b>Erudus ID</b>	15201e1594724271b3c93ebe1e1f9fe5
<b>Specification Type</b>	Dairy

**Outer Case GTIN** 05034321000215



## INGREDIENTS

### Ingredient Declaration

Pasteurised Cows Cream (MILK) Butterfat typically 83.8%, Salt (typically 1.5%)

## ALLERGENS

*Product Contains:*

<b>Celery/Celeriac</b>	No	<b>Mustard</b>	No
<b>Cereals Containing Gluten</b>	No	<b>Nuts (Tree)</b>	No
<b>Barley</b>	No	<b>Almond nuts</b>	No
<b>Oats</b>	No	<b>Brazil nuts</b>	No
<b>Rye</b>	No	<b>Cashew nuts</b>	No
<b>Wheat (including Spelt and Khorasan)</b>	No	<b>Hazelnuts</b>	No
<b>Crustacea</b>	No	<b>Macadamia (Queensland) nuts</b>	No
<b>Eggs</b>	No	<b>Pecan nuts</b>	No
<b>Fish</b>	No	<b>Pistachio nuts</b>	No
<b>Lupin</b>	No	<b>Walnuts</b>	No
<b>Milk</b>	Yes	<b>Peanuts</b>	No
<b>Molluscs</b>	No	<b>Sesame Seeds</b>	No
		<b>Soybeans</b>	No
		<b>Sulphur Dioxide and Sulphites</b>	No

### Additional Allergen Information

Made from Pasteurised Cows Cream ( MILK)

## SUPPLEMENTARY INGREDIENT INFORMATION

<b>Palm Oil</b>	No
<b>Hydrogenated Vegetable Oil/Fat</b>	No
<b>GM Protein/DNA</b>	No

ADDITIVES

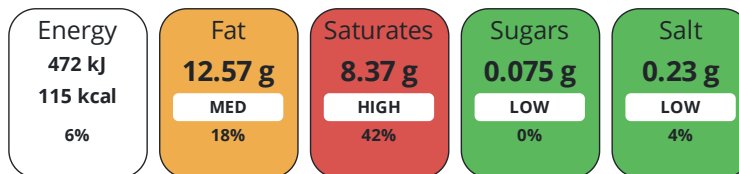
Product Contains:

<b>Artificial Antioxidants</b>	No	<b>Artificial Flavourings</b>	No
<b>Artificial Colours</b>	No	<b>Artificial Preservatives</b>	No
<b>Artificial Flavour Enhancers</b>	No	<b>Artificial Sweeteners</b>	No
<b>Vegetarian Diet</b>	Suitable for	<b>Halal Diet</b>	No
<b>Kosher Diet</b>	No		

DIET  
SUITABILITY

NUTRITIONAL  
INFORMATION

Each 15g/ml serving contains:



of your reference intake.

Typical values per 15g/ml : Energy 115kcal / 472kj

Nutrient	per 100g	RI per 100g	per 15g serving	RI per 15g serving
<b>Energy (kJ)</b>	3147 kJ	37%	472.1 kJ	6%
<b>Energy (kcal)</b>	765 kcal	38%	114.8 kcal	6%
<b>Fat</b>	83.8 g	120%	12.6 g	18%
<b>of which Saturates</b>	55.8 g	279%	8.4 g	42%
<b>of which Mono-unsaturates</b>	25.3 g		3.8 g	
<b>of which Polyunsaturates</b>	2.7 g		0.4 g	
<b>Carbohydrate</b>	2.4 g	1%	0.4 g	0%
<b>of which Sugars</b>	< 0.5 g	1%	0.1 g	0%
<b>Fibre</b>	0 g		-	
<b>Protein</b>	0.3 g	1%	-	
<b>Salt</b>	1.5 g	25%	0.2 g	3%
<b>Serving Size</b>	15 g			

SUPPLEMENTARY  
NUTRITIONAL  
INFORMATION

HANDLING &  
STORAGE  
INFORMATION

**Directions For Use**

Ready to eat

**Storage Instructions**

Keep Refrigerated <5C

<b>Shelf Life from Time of Production</b>	112 Days	<b>Exempt From Shelf Life Labelling</b>	No
---	----------	---	----

ACCREDITATIONS/  
CERTIFICATIONS/  
ASSURANCE  
SCHEMES



ORIGIN

<b>Product Country of Origin/Place of Provenance</b>	United Kingdom
--	----------------

PRODUCT  
CHARACTERISTICS

Standards Testing			
<b>Do you undertake trend analysis of microbiological results?</b>	Yes	<b>Is shelf life testing undertaken?</b>	Yes

Microbiological Standards

Organism	Description	Frequency	Target	Maximum	Sample (g or ml)
Enterobacteriaceae (cfu/g or ml)	Reject >10000	Weekly	<100	10000	100
Listeria Monocytogenes (cfu/g or ml)	Reject >100	Monthly	=0	100	100
Salmonella (cfu/g or ml)	Reject if Salmonella is present	Monthly	=0	0	100
Yeast (cfu/g or ml)	Reject >100	Quarterly	<20	100	100
Moulds (cfu/g or ml)	Reject >100	Quarterly	<20	100	100
Aerobic Colony Count (ACC) (cfu/g or ml)	Reject >10000000	Weekly	<100000	10000000	100

CONFIGURATION

Case Configuration Inner Pack Configuration

**Total Quantity of Inner Components in** 100 Units

**Outer Case**

**Is the Outer Case Splittable?** No

PRODUCT WEIGHTS

Inner Component

**Variable Weight Consumer Item** No

**Inner Component Weight** 1000 g

Outer Case

**Outer Case Gross Weight** 1.1 kg

**Outer Case Net Weight** 1 kg

PRODUCT DIMENSIONS

Inner Component

**Inner Component Depth** 30 mm

**Inner Component Width** 30 mm

**Inner Component Height** 15 mm

Outer Case

**Outer Case Depth** 195 mm

**Outer Case Width** 185 mm

**Outer Case Height** 60 mm

PALLET INFORMATION

**Quantity of Cases Per Pallet Layer** 30 Cases

**Pallet Height** 1.35 MTR

**Quantity of Layers Per Pallet** 15 Layers

**Pallet Gross Weight** 515 kg

**Quantity of Cases Per Pallet** 450 Cases

PACKAGING

Inner Component Packaging

Type	Materials	Weight	Recycled Plastic %	Recyclable	Returnable	Composite
Foil	Aluminium	18 g	- %			
Foil	Other	27 g	- %			

Outer Case Packaging

Type	Materials	Weight	Recycled Plastic %	Recyclable	Returnable	Composite
Case	Paper/Cardboard	57 g	- %			

Transport Packaging

Type	Materials	Weight	Recycled Plastic %	Recyclable	Returnable	Composite
Other	Plastic	200 g	- %		Yes	
Other	Wood	20000 g	- %		Yes	

OTHER  
INFORMATION

CONTACT  
INFORMATION

Address

Netherend Farm Ltd  
Ross House  
Woodside Road, Woolaston  
Lydney  
Glos  
GL15 6PB  
England

P: (Phone) 01594 529484

Complaints Contact

Ms Alison Hutchinson  
Hygiene & Systems Co-ordination Supervisor  
info@netherendfarmbutter.co.uk

P: (Phone) 01594 529484

Identification/Health Marks

GB FD001

Technical Contact

Ms Alison Hutchinson  
Hygiene & Systems Co-ordination Supervisor  
info@netherendfarmbutter.co.uk

P: (Phone) 01594 529484

Commercial Contact

Mrs Linda Weeks  
Director  
info@netherendfarmbutter.co.uk

P: (Phone) 01594 529484

The information on the [Erudus System](#) has been supplied by the manufacturers of the products and, whilst the owners of the Erudus System take steps to ensure the information is regularly updated, they give no warranty and no guarantee that the information is accurate. Product information and ingredients may change, please always read product labels carefully in addition to using the information provided by Erudus.

We do not accept liability for any inaccuracies or incorrect information contained on this site.  
Please visit <http://www.erudus.com/terms-and-conditions> for full terms and conditions.