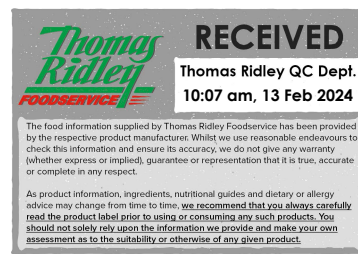


Changed Feb 13, 2024 00:00

Reviewed Feb 12, 2024 13:52

Erudus ID 202448881af043fba15be6a86848cdcc

Version 2.0



FU Cheese & Onion Pasty (36 x 185g approx)

Fu Cheese & Onion Pasty

PRODUCT DESCRIPTION

Cheese & Onion Filling encased in a traditional Puff Pastry – Frozen unbaked

Brand	Wrights Food Group
Manufacturer Product Code	2110
Effective Date	Feb 12, 2024
Product Type	Food
Product Category	Pastry
Storage Type	Frozen
Erudus ID	202448881af043fba15be6a86848cdcc
Specification Type	Bakery Products



Outer Case GTIN 05018833021104



INGREDIENTS

Ingredient Declaration

Wheat Flour (Contains Calcium carbonate, Iron, Niacin, Thiamin), Water, Margarine [Palm Oil, Palm Stearin, Water, Salt, Rapeseed Oil, Emulsifier (E471), Acidity Regulator (Citric Acid), Lemon Juice concentrate], Cheddar Cheese (**Milk**) (13%), Potatoes, Onions (3%), Glaze [Water, Modified Starch (Potato, Tapioca), Rapeseed Oil, **Milk** Protein, Emulsifiers (**Soya** Lecithin, E471), Acidity Regulator (E339(ii)), Colour (E160a)], Thickener (E1422), Cheese Powder (**Milk**), Rehydrated Potato Flake, Salt, Dijon Mustard [Water, **Mustard** Seeds, Spirit Vinegar, Salt], Yeast Extract, Stabiliser (E464), Onion Powder, White Pepper.

ALLERGENS

Product Contains:

Celery/Celериac	No	Mustard	Yes
Cereals Containing Gluten	Yes	Nuts (Tree)	No
Barley	No	Almond nuts	No
Oats	No	Brazil nuts	No
Rye	No	Cashew nuts	No
Wheat (including Spelt and Khorasan)	Yes	Hazelnuts	No
Crustacea	No	Macadamia (Queensland) nuts	No
Eggs	No	Pecan nuts	No
Fish	No	Pistachio nuts	No
Lupin	No	Walnuts	No
Milk	Yes	Peanuts	No
Molluscs	No	Sesame Seeds	No
		Soybeans	Yes
		Sulphur Dioxide and Sulphites	No

Additional Allergen Information

Allergens: For allergens (including cereals containing gluten) see ingredients in CAPITAL. May contain Nuts.

SUPPLEMENTARY INGREDIENT INFORMATION

Palm Oil	Yes
Hydrogenated Vegetable Oil/Fat	No
GM Protein/DNA	No

ADDITIVES

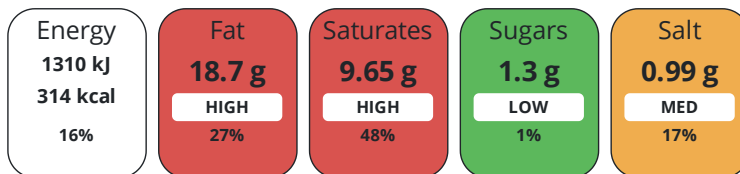
Product Contains:

Artificial Antioxidants	No	Artificial Flavourings	No
Artificial Colours	No	Artificial Preservatives	No
Artificial Flavour Enhancers	No	Artificial Sweeteners	No
Vegan Diet	No	Vegetarian Diet	Suitable for
Halal Diet	No	Kosher Diet	No

DIET
SUITABILITY

NUTRITIONAL
INFORMATION

Each 100g/ml portion contains:



of your reference intake.

Typical values per 100g/ml : Energy 314kcal / 1310kJ

Nutrient	per 100g	RI per 100g	per 185g serving	RI per 185g serving
Energy (kJ)	1310 kJ	16%	2423.5 kJ	29%
Energy (kcal)	314 kcal	16%	580.9 kcal	29%
Fat	18.7 g	27%	34.6 g	49%
of which Saturates	9.65 g	48%	17.9 g	90%
Carbohydrate	27.3 g	11%	50.5 g	19%
of which Sugars	1.3 g	1%	2.4 g	3%
Protein	8.1 g	16%	15 g	30%
Salt	0.99 g	17%	1.8 g	30%
Serving Size	185 g			

SUPPLEMENTARY
NUTRITIONAL
INFORMATION

HANDLING &
STORAGE
INFORMATION

Directions For Use

Baking Guidelines: Bake from frozen. Place on a baking tray in a pre-heated oven at 200°C / 40210°F Gas mark 6 for approximately 25/30 minutes. We have given you these cooking instructions as a guide only. Ensure product is piping hot before serving.

Storage Instructions

Store below -18°C. Once defrosted DO NOT re-freeze. Handle with care.

Shelf Life from Time of Production	547 Days	Exempt From Shelf Life Labelling	No
---	----------	---	----

ACCREDITATIONS/
CERTIFICATIONS/
ASSURANCE
SCHEMES



Other Accreditation

ORIGIN

Product Country of Origin/Place of United Kingdom

Provenance

Additional Origin Details

PRODUCT CHARACTERISTICS

Standards Testing

Do you undertake trend analysis of microbiological results? No

Is shelf life testing undertaken? No

Microbiological Standards

Organism	Description	Frequency	Target	Maximum	Sample (g or ml)
Bacillus Cereus (cfu/g or ml)		Annually	<20	100	100
Clostridium Perfringens (cfu/g or ml)		Annually	<20	100	100
E. Coli (cfu/g or ml)		Annually	<10	100	100
Listeria Monocytogenes (cfu/g or ml)		Annually	<0	0	25
Staphylococcus Aureus (cfu/g or ml)		Annually	<20	100	100
Total Viable Count (TVC) (cfu/g or ml)		Annually	<10000	100000	100
Salmonella (cfu/g or ml)		Annually	<0	0	25

CONFIGURATION

Case Configuration

Inner Pack Configuration

Total Quantity of Inner Components in Outer Case 36 Units

Is the Outer Case Splittable? No

PRODUCT WEIGHTS

Inner Component

Variable Weight Consumer Item Yes

Outer Case

Outer Case Gross Weight 7.04 kg

Outer Case Net Weight 6.66 kg

PRODUCT DIMENSIONS

Inner Component

Inner Component Depth 0 mm

Inner Component Width 0 mm

Inner Component Height 0 mm

Outer Case

Outer Case Depth 370 mm

Outer Case Width 250 mm

Outer Case Height 180 mm

PALLET INFORMATION

Quantity of Cases Per Pallet Layer 12 Cases

Pallet Height 1.2 MTR

Quantity of Layers Per Pallet 6 Layers

Pallet Gross Weight 535.34 kg

Quantity of Cases Per Pallet 72 Cases

PACKAGING

Outer Case Packaging

Type	Materials	Weight	Recycled Plastic %	Recyclable	Returnable	Composite
Case	Plastic	18 g	- %			
Case	Paper/Cardboard	354 g	- %			

Transport Packaging

Type	Materials	Weight	Recycled Plastic %	Recyclable	Returnable	Composite
Other	Plastic	240 g	- %		Yes	
Other	Paper/Cardboard	436 g	- %		Yes	
Other	Wood	28000 g	- %		Yes	

OTHER INFORMATION

Identification/Health Marks

GB AX028

Manufacturer Comments

.

CONTACT INFORMATION

Address

Wrights Food Group
Weston Road
Crewe
Cheshire
CW1 6XQ
England

P: (Phone) 01270 504300

Complaints Contact

Maria Bogdan
Technical Services Administrator
technicalqueriescrewe@compleatfood.com

P: (Phone) 01270 504300

Technical Contact

Nick Gollins
Head of Technical
nick.gollins@compleatfood.com

P: (Phone) 01270 504300

Commercial Contact

Sarah Morris
National Accounts Manager
sarah.morris@compleatfood.com

P: (Phone) 01270 504300

The information on the [Erudus System](#) has been supplied by the manufacturers of the products and, whilst the owners of the Erudus System take steps to ensure the information is regularly updated, they give no warranty and no guarantee that the information is accurate. Product information and ingredients may change, please always read product labels carefully in addition to using the information provided by Erudus.

We do not accept liability for any inaccuracies or incorrect information contained on this site.
Please visit <http://www.erudus.com/terms-and-conditions> for full terms and conditions.