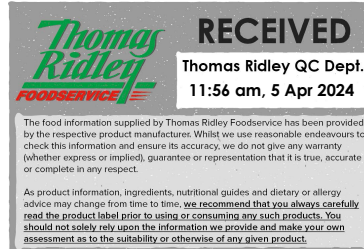


Changed Apr 04, 2024 14:52

Reviewed Apr 04, 2024 14:52

Erudus ID 9211e71f404d429d8df3673285d4d2b5

Version 2.0



10702

Cranberry Sauce 2.5kg

Cranberry Sauce 1x2.5kg

PRODUCT DESCRIPTION

Cranberries in thick gel

| | |
|---------------------------|----------------------------------|
| Brand | Flemings Zeelandia |
| Manufacturer Product Code | ITEM-0491 |
| Product Type | Food |
| Product Category | Other |
| Storage Type | Ambient |
| Erudus ID | 9211e71f404d429d8df3673285d4d2b5 |
| Specification Type | Generic |
| Inner Component GTIN | 5060145440609 |



INGREDIENTS

Ingredient Declaration

Cranberries (40%), Sugar, Water, Starch, Fructose, Acidity Regulator: Sodium Citrate., Gelling Agent: Pectin., Preservative: Potassium Sorbate., Acidity Regulator: Citric Acid., Gelling Agent: Calcium Lactate.

ALLERGENS

Product Contains:

| | | | |
|---|----|--------------------------------------|----|
| Celery/Celeriac | No | Mustard | No |
| Cereals Containing Gluten | No | Nuts (Tree) | No |
| Barley | No | Almond nuts | No |
| Oats | No | Brazil nuts | No |
| Rye | No | Cashew nuts | No |
| Wheat (including Spelt and Khorasan) | No | Hazelnuts | No |
| Crustacea | No | Macadamia (Queensland) nuts | No |
| Eggs | No | Pecan nuts | No |
| Fish | No | Pistachio nuts | No |
| Lupin | No | Walnuts | No |
| Milk | No | Peanuts | No |
| Molluscs | No | Sesame Seeds | No |
| | | Soybeans | No |
| | | Sulphur Dioxide and Sulphites | No |

SUPPLEMENTARY INGREDIENT INFORMATION

| | |
|---------------------------------------|----|
| Palm Oil | No |
| Hydrogenated Vegetable Oil/Fat | No |
| GM Protein/DNA | No |

ADDITIVES

Product Contains:

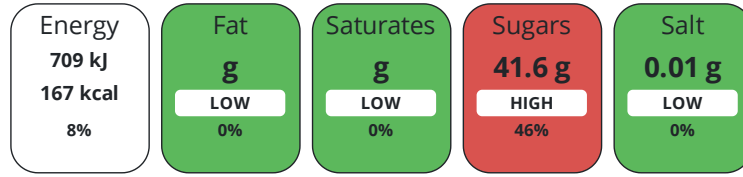
| | | | |
|-------------------------------------|----|---------------------------------|-----|
| Artificial Antioxidants | No | Artificial Flavourings | No |
| Artificial Colours | No | Artificial Preservatives | Yes |
| Artificial Flavour Enhancers | No | Artificial Sweeteners | No |

DIET
SUITABILITY

| | | | |
|-------------------|--------------|------------------------|--------------|
| Vegan Diet | Suitable for | Vegetarian Diet | Suitable for |
| Halal Diet | No | Kosher Diet | No |

NUTRITIONAL
INFORMATION

Each 100g/ml portion contains:



of your reference intake.

Typical values per 100g/ml : Energy 167kcal / 709kJ

| Nutrient | per 100g | RI per 100g |
|---------------------------|----------|-------------|
| Energy (kJ) | 709 kJ | 8% |
| Energy (kcal) | 167 kcal | 8% |
| Fat | 0 g | 0% |
| of which Saturates | 0 g | 0% |
| Carbohydrate | 41.6 g | 16% |
| of which Sugars | 41.6 g | 46% |
| Fibre | 2.53 g | |
| Protein | 0.16 g | 0% |
| Salt | 0.01 g | 0% |

SUPPLEMENTARY
NUTRITIONAL
INFORMATION

HANDLING &
STORAGE
INFORMATION

Directions For Use

Contents can be used direct from container.

Storage Instructions

Store in cool dry conditions and once open store below 5°C, use within 7 days.

| | | | |
|---|----------|---|----|
| Shelf Life from Time of Production | 274 Days | Exempt From Shelf Life Labelling | No |
|---|----------|---|----|

| | |
|------------------------|----------------------------|
| BRCGS Certified | Other Accreditation |
|------------------------|----------------------------|

ACCREDITATIONS/
CERTIFICATIONS/
ASSURANCE
SCHEMES
ORIGIN

Product Country of Origin/Place of United Kingdom

Provenance

Additional Origin Details

.

Standards Testing

| | | | |
|--|-----|--|----|
| Do you undertake trend analysis of microbiological results? | Yes | Is shelf life testing undertaken? | No |
|--|-----|--|----|

PRODUCT
CHARACTERISTICS

Microbiological Standards

| Organism | Description | Frequency | Target | Maximum | Sample (g or ml) |
|-------------------------------------|-------------|-----------|--------|---------|------------------|
| Coliforms (cfu/g or ml) | | Annually | <0 | 10 | 100 |
| E. Coli (cfu/g or ml) | | Annually | <0 | 10 | 100 |
| Staphylococcus Aureus (cfu/g or ml) | | Annually | <0 | 10 | 100 |

| Organism | Description | Frequency | Target | Maximum | Sample (g or ml) |
|--|-------------|-----------|--------|---------|------------------|
| Total Viable Count (TVC) (cfu/g or ml) | | Annually | <10 | 500 | 100 |
| Salmonella (cfu/g or ml) | | Annually | <0 | 0 | 25 |
| Yeast (cfu/g or ml) | | Annually | <10 | 100 | 100 |
| Moulds (cfu/g or ml) | | Annually | <10 | 100 | 100 |

Analytical Standards

| Test | Description | Frequency | Target | Range | Sample (g or ml) |
|------|-------------|-------------|--------|--------|------------------|
| pH | | Every Batch | <4 | 4 to 4 | 100 |

CONFIGURATION

Case Configuration

Inner Pack Configuration

Total Quantity of Inner Components in Outer Case 1 Units

Is the Outer Case Splittable? No

PRODUCT WEIGHTS

Inner Component

Variable Weight Consumer Item No

Inner Component Weight 2.5 kg

Outer Case

Outer Case Gross Weight 2.65 kg

Outer Case Net Weight 2.5 kg

PRODUCT DIMENSIONS

Inner Component

Inner Component Depth 200 mm

Inner Component Width 200 mm

Inner Component Height 130 mm

Outer Case

Outer Case Depth 200 mm

Outer Case Width 200 mm

Outer Case Height 130 mm

PALLET INFORMATION

Quantity of Cases Per Pallet Layer 32 Cases

Pallet Height 1.5 MTR

Quantity of Layers Per Pallet 8 Layers

Pallet Gross Weight 680 kg

Quantity of Cases Per Pallet 256 Cases

PACKAGING

Inner Component Packaging

| Type | Materials | Weight | Recycled Plastic % | Recyclable | Returnable | Composite |
|--------|--|--------|--------------------|------------|------------|-----------|
| Bucket | Plastic / PP (Polypropylene) | 105 g | 0 % | Yes | No | |
| Lid | Plastic / PP (Polypropylene) | 30 g | 0 % | Yes | No | |
| Film | Plastic / HDPE (High Density Polyethylene) | 2 g | 0 % | Yes | No | |
| Label | Paper/Cardboard / Paper | 1 g | - % | No | No | |

Transport Packaging

| Type | Materials | Weight | Recycled Plastic % | Recyclable | Returnable | Composite |
|-------------------|---|---------|--------------------|------------|------------|-----------|
| Pallet Wrap | Plastic / LDPE (Low Density Polyethylene) | 175 g | 0 % | Yes | No | |
| Layer Card | Paper/Cardboard / Cardboard | 400 g | - % | Yes | No | |
| Pallet | Wood | 27216 g | - % | Yes | No | |
| Pallet Shroud/Bag | Plastic / LDPE (Low Density Polyethylene) | 293 g | 0 % | Yes | No | |

OTHER INFORMATION

Manufacturer Comments

The appearance of the product change over shelf life.

CONTACT INFORMATION

Address

Flemings Zeelandia
Morley Drive
Congleton
Cheshire
CW12 3LF
England

P: (Phone) 01260 299911

Complaints Contact

Adam Lanckmans
Technical Manager
adam.lanckmans@flemings.org.uk

P: (Phone) 01260 299911

Technical Contact

Adam Lanckmans
Technical Manager
adam.lanckmans@flemings.org.uk

P: (Phone) 01260 299911

Commercial Contact

Andy Smith
Sales Manager
andrew.smith@flemings.org.uk

P: (Phone) 07551153493

The information on the [Erudus System](#) has been supplied by the manufacturers of the products and, whilst the owners of the Erudus System take steps to ensure the information is regularly updated, they give no warranty and no guarantee that the information is accurate. Product information and ingredients may change, please always read product labels carefully in addition to using the information provided by Erudus.

We do not accept liability for any inaccuracies or incorrect information contained on this site. Please visit <http://www.erudus.com/terms-and-conditions> for full terms and conditions.