


Changed Apr 04, 2024 10:55


Reviewed Apr 04, 2024 10:55

Erudus ID ccdf3409b1e04d6eb105eccee69e075e

Version 2.0



**RECEIVED**  
Thomas Ridley QC Dept.  
11:47 am, 5 Apr 2024



The food information supplied by Thomas Ridley Foodservice has been provided by the respective product manufacturer. Whilst we use reasonable endeavours to check this information and ensure its accuracy, we do not give any warranty (whether express or implied), guarantee or representation that it is true, accurate or complete in any respect.

As product information, ingredients, nutritional guides and dietary or allergy advice may change from time to time, we recommend that you always carefully read the product label prior to using or consuming any such products. You should not solely rely upon the information we provide and make your own assessment as to the suitability or otherwise of any given product.

10704

# Strawberry Fruit Filling 2.5kg

Strawberry Fruit Filling 1x2.5kg

## PRODUCT DESCRIPTION

Strawberries in a thick gel

<b>Brand</b>	Flemings Zeelandia
<b>Manufacturer Product Code</b>	ITEM-0538
<b>Product Type</b>	Food
<b>Product Category</b>	Other
<b>Storage Type</b>	Ambient
<b>Erudus ID</b>	ccdf3409b1e04d6eb105eccee69e075e
<b>Specification Type</b>	Generic

**Inner Component GTIN** 5060145440647



## INGREDIENTS

### Ingredient Declaration

Strawberries (38%), Water, Sugar, Modified Starch, Acidity regulator: Citric Acid., Fruit Concentrate (Elderberry concentrate), Natural Flavouring, Preservative: Potassium Sorbate.

## ALLERGENS

*Product Contains:*

<b>Celery/Celeriac</b>	No	<b>Mustard</b>	No
<b>Cereals Containing Gluten</b>	No	<b>Nuts (Tree)</b>	No
<b>Barley</b>	No	<b>Almond nuts</b>	No
<b>Oats</b>	No	<b>Brazil nuts</b>	No
<b>Rye</b>	No	<b>Cashew nuts</b>	No
<b>Wheat (including Spelt and Khorasan)</b>	No	<b>Hazelnuts</b>	No
<b>Crustacea</b>	No	<b>Macadamia (Queensland) nuts</b>	No
<b>Eggs</b>	No	<b>Pecan nuts</b>	No
<b>Fish</b>	No	<b>Pistachio nuts</b>	No
<b>Lupin</b>	No	<b>Walnuts</b>	No
<b>Milk</b>	No	<b>Peanuts</b>	No
<b>Molluscs</b>	No	<b>Sesame Seeds</b>	No
		<b>Soybeans</b>	No
		<b>Sulphur Dioxide and Sulphites</b>	No

## SUPPLEMENTARY INGREDIENT INFORMATION

<b>Palm Oil</b>	No
<b>Hydrogenated Vegetable Oil/Fat</b>	No
<b>GM Protein/DNA</b>	No

## ADDITIVES

*Product Contains:*

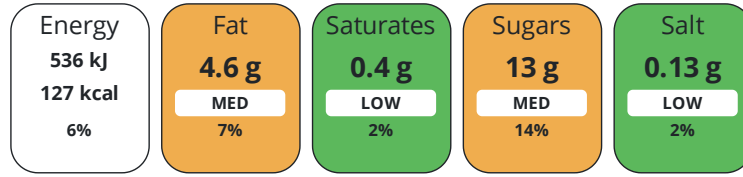
<b>Artificial Antioxidants</b>	No	<b>Artificial Flavourings</b>	No
<b>Artificial Colours</b>	No	<b>Artificial Preservatives</b>	Yes
<b>Artificial Flavour Enhancers</b>	No	<b>Artificial Sweeteners</b>	No

DIET  
SUITABILITY

<b>Vegan Diet</b>	Suitable for	<b>Vegetarian Diet</b>	Suitable for
<b>Halal Diet</b>	No	<b>Kosher Diet</b>	No

NUTRITIONAL  
INFORMATION

Each 100g/ml portion contains:



of your reference intake.

Typical values per 100g/ml : Energy 127kcal / 536kJ

Nutrient	per 100g	RI per 100g
<b>Energy (kJ)</b>	536 kJ	6%
<b>Energy (kcal)</b>	127 kcal	6%
<b>Fat</b>	4.6 g	7%
of which Saturates	0.4 g	2%
<b>Carbohydrate</b>	21.1 g	8%
of which Sugars	13 g	14%
<b>Fibre</b>	0.6 g	
<b>Protein</b>	0.37 g	1%
<b>Salt</b>	0.13 g	2%

SUPPLEMENTARY  
NUTRITIONAL  
INFORMATION

HANDLING &  
STORAGE  
INFORMATION

**Directions For Use**

Product can be used directly from unit

**Storage Instructions**

Store at ambient temperature while unopened. Once opened store below 5°C use within 7 days

<b>Shelf Life from Time of Production</b>	182 Days	<b>Exempt From Shelf Life Labelling</b>	No
---	----------	---	----

**BRCGS Certified**

**Other Accreditation**

ACCREDITATIONS/  
CERTIFICATIONS/  
ASSURANCE  
SCHEMES  
ORIGIN

**Product Country of Origin/Place of** United Kingdom

**Provenance**

**Additional Origin Details**

.

PRODUCT  
CHARACTERISTICS

Standards Testing

<b>Do you undertake trend analysis of microbiological results?</b>	Yes	<b>Is shelf life testing undertaken?</b>	No
--	-----	--	----

Microbiological Standards

Organism	Description	Frequency	Target	Maximum	Sample (g or ml)
Total Viable Count (TVC) (cfu/g or ml)		Annually	<10	500	100
Coliforms (cfu/g or ml)		Annually	<0	10	100
E. Coli (cfu/g or ml)		Annually	<0	10	100

Organism	Description	Frequency	Target	Maximum	Sample (g or ml)
Staphylococcus Aureus (cfu/g or ml)		Annually	<0	10	10
Salmonella (cfu/g or ml)		Annually	<0	0	25
Yeast (cfu/g or ml)		Annually	<10	100	100
Moulds (cfu/g or ml)		Annually	<10	100	100

Analytical Standards

Test	Description	Frequency	Target	Range	Sample (g or ml)
pH		Every Batch	<4	4 to 4	100

CONFIGURATION

Case Configuration

Inner Pack Configuration

**Total Quantity of Inner Components in Outer Case** 1 Units

**Is the Outer Case Splittable?** No

PRODUCT WEIGHTS

Inner Component

**Variable Weight Consumer Item** No

**Inner Component Weight** 2.5 kg

Outer Case

**Outer Case Gross Weight** 2.65 kg

**Outer Case Net Weight** 2.5 kg

PRODUCT DIMENSIONS

Inner Component

**Inner Component Depth** 200 mm

**Inner Component Width** 200 mm

**Inner Component Height** 130 mm

Outer Case

**Outer Case Depth** 200 mm

**Outer Case Width** 200 mm

**Outer Case Height** 130 mm

PALLET INFORMATION

**Quantity of Cases Per Pallet Layer** 32 Cases

**Pallet Height** 1.5 MTR

**Quantity of Layers Per Pallet** 8 Layers

**Pallet Gross Weight** 680 kg

**Quantity of Cases Per Pallet** 256 Cases

PACKAGING

Inner Component Packaging

Type	Materials	Weight	Recycled Plastic %	Recyclable	Returnable	Composite
Bucket	Plastic / PP (Polypropylene)	105 g	0 %	Yes	No	
Lid	Plastic / PP (Polypropylene)	30 g	0 %	Yes	No	
Film	Plastic / HDPE (High Density Polyethylene)	2 g	0 %	Yes	No	
Label	Paper/Cardboard / Paper	1 g	- %	No	No	

Transport Packaging

Type	Materials	Weight	Recycled Plastic %	Recyclable	Returnable	Composite
Pallet Wrap	Plastic / LDPE (Low Density Polyethylene)	175 g	0 %	Yes	No	
Layer Card	Paper/Cardboard / Cardboard	400 g	- %	Yes	No	
Pallet	Wood	27216 g	- %	Yes	No	
Pallet Shroud/Bag	Plastic / LDPE (Low Density Polyethylene)	293 g	0 %	Yes	No	

OTHER INFORMATION

**Manufacturer Comments**

The appearance of the product change over shelf life.

CONTACT INFORMATION

Address

Flemings Zeelandia  
Morley Drive  
Congleton  
Cheshire  
CW12 3LF  
England

P. (Phone) 01260 299911

Complaints Contact

Adam Lanckmans  
Technical Manager  
adam.lanckmans@flemings.org.uk

P. (Phone) 01260 299911

Technical Contact

Adam Lanckmans  
Technical Manager  
adam.lanckmans@flemings.org.uk

P. (Phone) 01260 299911

Commercial Contact

Andy Smith  
Sales Manager  
andrew.smith@flemings.org.uk

P. (Phone) 07551153493

The information on the [Erudus System](#) has been supplied by the manufacturers of the products and, whilst the owners of the Erudus System take steps to ensure the information is regularly updated, they give no warranty and no guarantee that the information is accurate. Product information and ingredients may change, please always read product labels carefully in addition to using the information provided by Erudus.

We do not accept liability for any inaccuracies or incorrect information contained on this site. Please visit <http://www.erudus.com/terms-and-conditions> for full terms and conditions.