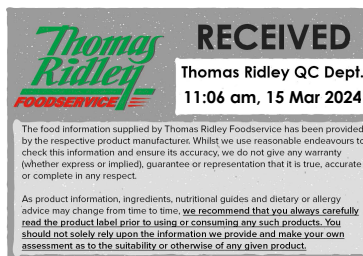


Changed Mar 14, 2024 11:20

Reviewed Mar 14, 2024 11:20

Erudus ID 47797461b2b5414099db047f89931fa3

Version 2.0



10705

Apple Sauce

Apple Sauce 1x2.5kg

PRODUCT DESCRIPTION

Pieces of apple in thick sauce

Brand	Flemings Zeelandia
Manufacturer Product Code	ITEM-0455
Product Type	Food
Product Category	Other
Storage Type	Ambient
Erudus ID	47797461b2b5414099db047f89931fa3
Specification Type	Generic
Inner Component GTIN	5060145440579



INGREDIENTS

Ingredient Declaration

Water, Apple (34%) (Apple, Antioxidant: Ascorbic Acid., Acidity Regulator: Citric Acid., Salt), Sugar, Modified Starch, Preservative: Potassium Sorbate., Acidity Regulators: Malic Acid, Sodium Citrate

ALLERGENS

Product Contains:

Celery/Celeriac	No	Mustard	No
Cereals Containing Gluten	No	Nuts (Tree)	No
Barley	No	Almond nuts	No
Oats	No	Brazil nuts	No
Rye	No	Cashew nuts	No
Wheat (including Spelt and Khorasan)	No	Hazelnuts	No
Crustacea	No	Macadamia (Queensland) nuts	No
Eggs	No	Pecan nuts	No
Fish	No	Pistachio nuts	No
Lupin	No	Walnuts	No
Milk	No	Peanuts	No
Molluscs	No	Sesame Seeds	No
		Soybeans	No
		Sulphur Dioxide and Sulphites	No

SUPPLEMENTARY INGREDIENT INFORMATION

Palm Oil	No
Hydrogenated Vegetable Oil/Fat	No
GM Protein/DNA	No

ADDITIVES

Product Contains:

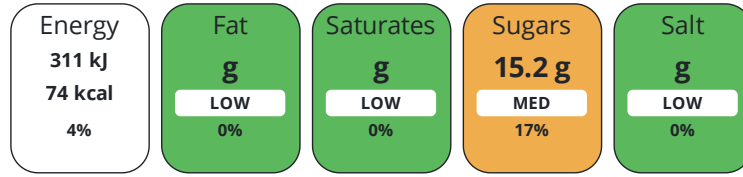
Artificial Antioxidants	No	Artificial Flavourings	No
Artificial Colours	No	Artificial Preservatives	Yes
Artificial Flavour Enhancers	No	Artificial Sweeteners	No

DIET
SUITABILITY

Vegan Diet	Suitable for	Vegetarian Diet	Suitable for
Halal Diet	No	Kosher Diet	No

NUTRITIONAL
INFORMATION

Each 100g/ml portion contains:



of your reference intake.

Typical values per 100g/ml : Energy 74kcal / 311kJ

Nutrient	per 100g	RI per 100g
Energy (kJ)	311 kJ	4%
Energy (kcal)	74 kcal	4%
Fat	0 g	0%
of which Saturates	0 g	0%
Carbohydrate	18.4 g	7%
of which Sugars	15.2 g	17%
Fibre	0.4 g	
Protein	0.1 g	0%
Salt	0 g	0%

SUPPLEMENTARY
NUTRITIONAL
INFORMATION

HANDLING &
STORAGE
INFORMATION

Directions For Use

Product can be used directly from the unit

Storage Instructions

Store the product in a cool, ambient dry storage area. Once opened store product below 5oC and use within 7 days

Shelf Life from Time of Production	182 Days	Exempt From Shelf Life Labelling	No
---	----------	---	----

ACCREDITATIONS/
CERTIFICATIONS/
ASSURANCE
SCHEMES



Other Accreditation

no

ORIGIN

Product Country of Origin/Place of United Kingdom

Provenance

Additional Origin Details

.

PRODUCT
CHARACTERISTICS

Standards Testing

Do you undertake trend analysis of microbiological results?	No	Is shelf life testing undertaken?	No
--	----	--	----

Microbiological Standards

Organism	Description	Frequency	Target	Maximum	Sample (g or ml)
Coliforms (cfu/g or ml)		Annually	<0	10	100

Organism	Description	Frequency	Target	Maximum	Sample (g or ml)
E. Coli (cfu/g or ml)		Annually	<0	10	100
Staphylococcus Aureus (cfu/g or ml)		Annually	<0	10	00
Total Viable Count (TVC) (cfu/g or ml)		Annually	<10	500	100
Salmonella (cfu/g or ml)		Annually	<0	0	25
Yeast (cfu/g or ml)		Annually	<10	100	100
Moulds (cfu/g or ml)		Annually	<10	100	100
Analytical Standards					
Test	Description	Frequency	Target	Range	Sample (g or ml)
pH		Every Batch	<4	0 to 4	100

CONFIGURATION

Case Configuration Inner Pack Configuration

Total Quantity of Inner Components in Outer Case	1 Units
Is the Outer Case Splittable?	No

PRODUCT WEIGHTS

Inner Component	
Variable Weight Consumer Item	No
Inner Component Weight	2.5 kg
Outer Case	
Outer Case Gross Weight	2.65 kg
Outer Case Net Weight	2.5 kg

PRODUCT DIMENSIONS

Inner Component	
Inner Component Depth	200 mm
Inner Component Width	200 mm
Inner Component Height	130 mm
Outer Case	
Outer Case Depth	200 mm
Outer Case Width	200 mm
Outer Case Height	130 mm

PALLET INFORMATION

Quantity of Cases Per Pallet Layer	64 Cases	Pallet Height	1.5 MTR
Quantity of Layers Per Pallet	4 Layers	Pallet Gross Weight	680 kg
Quantity of Cases Per Pallet	256 Cases		

PACKAGING

Outer Case Packaging						
Type	Materials	Weight	Recycled Plastic %	Recyclable	Returnable	Composite
Bucket	Plastic	150 g	- %			
Transport Packaging						
Type	Materials	Weight	Recycled Plastic %	Recyclable	Returnable	Composite
Other	Plastic	2000 g	- %			
Other	Paper/Cardboard	400 g	- %			
Other	Wood	30000 g	- %			

OTHER
INFORMATION

Manufacturer Comments

The appearance of the product change over shelf life.

CONTACT
INFORMATION

Address

Flemings Zeelandia
Morley Drive
Congleton
Cheshire
CW12 3LF
England

P: (Phone) 01260 299911

Complaints Contact

Adam Lanckmans
Technical Manager
adam.lanckmans@flemings.org.uk

P: (Phone) 01260 299911

Technical Contact

Adam Lanckmans
Technical Manager
adam.lanckmans@flemings.org.uk

P: (Phone) 01260 299911

Commercial Contact

Andy Smith
Sales Manager
andrew.smith@flemings.org.uk

P: (Phone) 07551153493

The information on the [Erudus System](#) has been supplied by the manufacturers of the products and, whilst the owners of the Erudus System take steps to ensure the information is regularly updated, they give no warranty and no guarantee that the information is accurate. Product information and ingredients may change, please always read product labels carefully in addition to using the information provided by Erudus.

We do not accept liability for any inaccuracies or incorrect information contained on this site.
Please visit <http://www.erudus.com/terms-and-conditions> for full terms and conditions.