

**Thomas Ridley**  
FOODSERVICE

**RECEIVED**  
Thomas Ridley QC Dept.  
11:03 am, 22 Feb 2023

The food information supplied by Thomas Ridley Foodservice has been provided by the respective product manufacturer. Whilst we use reasonable endeavours to check this information and ensure its accuracy, we do not give any warranty (whether express or implied), guarantee or representation that it is true, accurate or complete in any respect.

As product information, ingredients, nutritional guides and dietary or allergy advice may change from time to time, we recommend that you always carefully read the product label prior to using or consuming any such products. You should not solely rely upon the information we provide and make your own assessment as to the suitability or otherwise of any given product.

## San Pellegrino Grapefruit 330ml



**EAN**  
8002270606823

**Target market(s)**  
GB, IE

# Components

## Ingredients

Water  
Grapefruit Juice from Concentrate (16%)  
Sugar  
Grapefruit Extract (1%)  
Carbon Dioxide  
Acid: Citric Acid  
Natural Flavourings  
Stabiliser: Pectins  
Sweetener: Steviol Glycosides from Stevia  
Sweetener from natural origin

## Nutrition

	Per 100ml	Per Can	% RI* Per Can
Energy	90kJ	297kJ	4%
	21kcal	70kcal	
Fat, of which:	0.0g	0.1g	<1%
saturates	0.0g	0.1g	<1%
Carbohydrate	4.8g	15.9g	6%
of which: sugars	4.3g	14.1g	16%
Fibre	0.1g	0.2g	-
Protein	0.1g	0.4g	<1%
Salt	0.00g	0.01g	<1%

\*Reference Intake of an average adult (8400kJ/2000kcal)

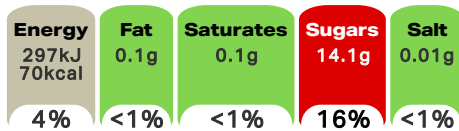
Contains 1 serving

## Calculated Nutrition

	per 100ml	Per Can
Energy (kJ)	90	297
Energy (kcal)	21	70
Fat (g)	0	0.1
of which saturates (g)	0	0.1
Carbohydrate (g)	4.8	15.9
of which sugars (g)	4.3	14.1
Fibre (g)	0.1	0.2
Protein (g)	0.1	0.4
Salt (g)	0	0.01

## Front of Pack Nutrition

Per Portion  
Each can contains



of an adult's Reference Intake\*

Energy per 100ml: 90kJ/21kcal

\*Reference Intake of an average adult (8400kJ/2000kcal)

## Nutrition Other Text

Reference Intake of an average adult (8400kJ/2000kcal)  
Contains 1 serving

## Reference Intake Statement

Reference Intake Statement - Reference Intake of an average adult (8400kJ/2000kcal)

## HFSS Indicator

HFSS Indicator - Not HFSS

## Product Description

### Brand

San Pellegrino

### Features

Sparkling Grapefruit Beverage with 16% Grapefruit juice from concentrate, with sugar and sweeteners

### Standardised Brand

Brand - Sanpellegrino

### Regulated Product Name

Sparkling grapefruit beverage with 16% grapefruit juice from concentrate, with sugar and sweetener.

## Marketing

### Company Name

Stafford Lynch Ltd

### Contact Address

PO Box No 207,  
York,  
YO91 1XY.

Stafford Lynch Ltd,  
Unit 101 Northwest Business Park,  
Ballycoolin,  
Dublin,  
D15 NN20.

### Product Marketing

SANPELLEGRINO Pompelmo (Grapefruit) is bursting with a sweet finish that helps soften the typical sourness of grapefruit and offers a delightful finish.

### Brand Marketing

An Italian tradition since 1932, SANPELLEGRINO Sparkling have delighted the world with their authentic Italian taste. Allow your senses to take in the sun-ripened fruit. Its unique and intense taste make every moment special and allow you to enjoy life *deliziosa* any time you choose.

## Health & Lifestyle

### Additives

Sweeteners - Contains

## Storage & Usage

### Storage Type

#### Type

Ambient

### Preparation and Usage

Best served chilled.

### Storage

Best before: see base of can.

Store in a clean, cool, dry and odourless place, away from direct sunlight and freezing temperatures.

## Brandbank Captured Pack Data

### Pack Size

330ml ☺

### Numeric Size

Numeric Size - 330

### Recycling Info

Pack - Recycle

### Pack Type

Type - Can

### Recycling Scheme

- OPRL

### Recycling Other Text

I am Recyclable!  
Please Recycle Me!

### Usage Count

Number of uses - Servings

1

### Usage Other Text

Contains 1 serving

## Customer Services

### Manufacturers Address

PO Box No 207,  
York,  
YO91 1XY.

Stafford Lynch Ltd,  
Unit 101 Northwest Business Park,  
Ballycoolin,  
Dublin,  
D15 NN20.

Sanpellegrino S.p.A.,  
San Pellegrino Terme (BG),  
Loc. Ruspino,  
Italy.

### Return To

UK Consumer Enquiries  
(Mon-Fri 9am-5pm): Freephone - 0800 000030  
PO Box No 207,  
York,  
YO91 1XY.

Ireland: Stafford Lynch Ltd,  
Unit 101 Northwest Business Park,  
Ballycoolin,  
Dublin,  
D15 NN20.  
Tel: (+353) 1 8023 100

### Telephone Helpline

UK 0800 000030  
(+353) 1 8023 100

### Social Media

Follow us on Facebook, Instagram

## Extended Data

### Description Breakdown

Variant - Grapefruit



Nutrition Information: Typical Values	Per 100ml	Per Can	% RI* Per Can
Energy	90kJ 21kcal	297kJ 70kcal	4%
Fat, of which: saturates	0.0g 0.0g	0.1g 0.1g	<1% <1%
Carbohydrate of which:sugars	4.8g 4.3g	15.9g 14.1g	6% 16%
Fibre	0.1g	0.2g	-
Protein	0.1g	0.4g	<1%
Salt	0.00g	0.01g	<1%

\*Reference Intake of an average adult (8400kJ/2000kcal). Contains 1 serving.



Nutrition Information: Typical Values	Per 100ml	Per Can	% RI* Per Can
Energy	90kJ 21kcal	297kJ 70kcal	4%
Fat, of which: saturates	0.0g 0.0g	0.1g 0.1g	<1% <1%
Carbohydrate of which:sugars	4.8g 4.3g	15.9g 14.1g	6% 16%
Fibre	0.1g	0.2g	-
Protein	0.1g	0.4g	<1%
Salt	0.00g	0.01g	<1%

\*Reference Intake of an average adult (8400kJ/2000kcal). Contains 1 serving.

